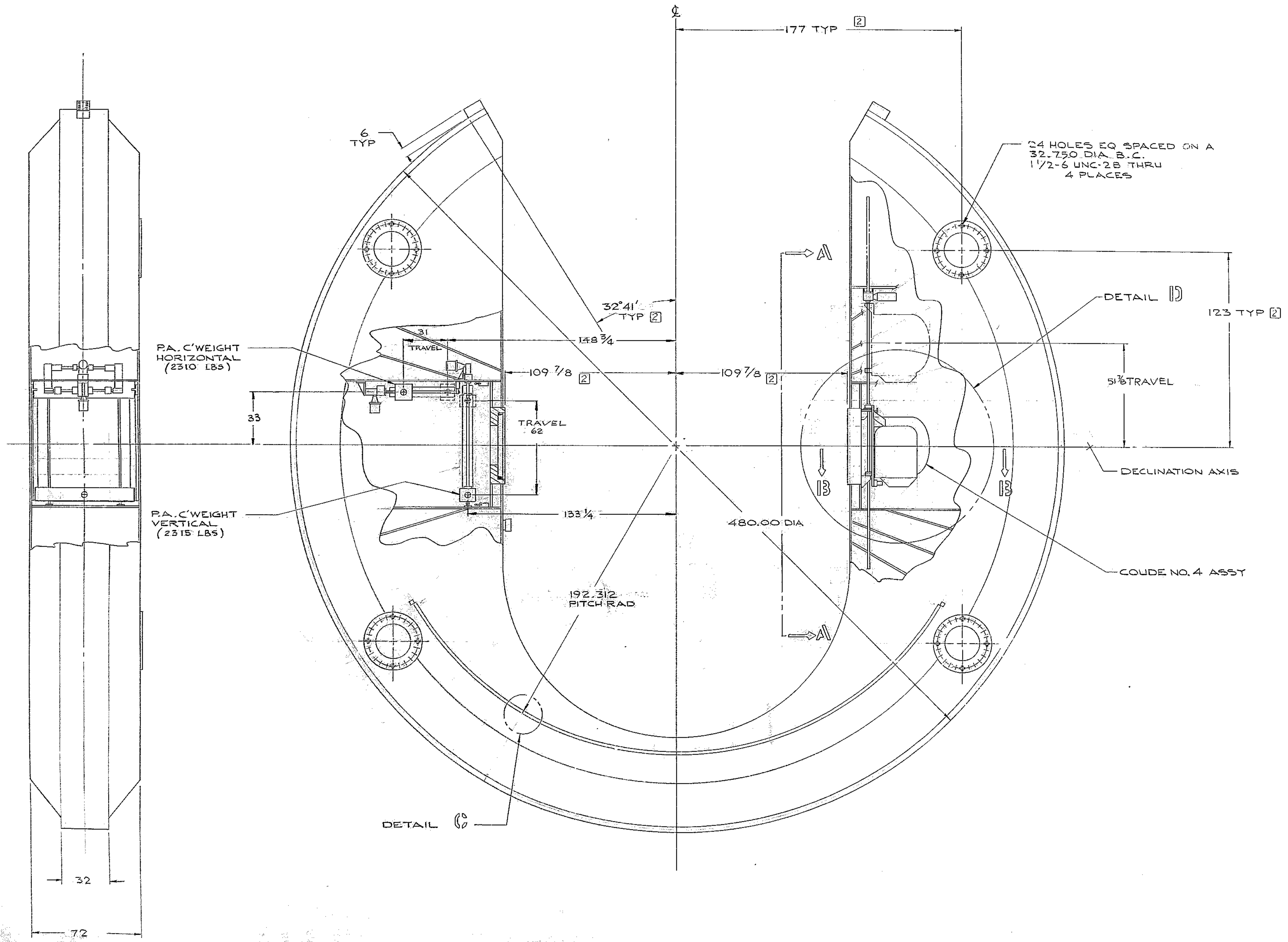


REVISIONS		DATE	APPROVED
A	REVISED DETAIL FOR MANUF. PER A.U.R.A.	3/1/68	FCG
B	SEE SHIT 2	3/1/68	FCG
C	2310 & 2315 WGS 2420 148 1/2 WGS 145 1/2 62 WGS 64 51 7/8 WGS 54	3/1/68	LS



NOTES:  
 1. ALL DIMENSIONS ARE IN INCHES.  
 2. DIMENSIONS APPLY WITH HORSESHOE IN PRE LOADED CONDITION. REFER TO OUTLINE DWG 2150.251E001

WESTERN GEAR CORPORATION  
 CONSTRUCTION PROJECTS  
 DEPARTMENT  
 APPROVED FOR  
 PROCUREMENT  
 FILE 1168  
 DATE 3/1/68

NEXT ASSY : 2150.201E001 (WGN. 102821)

FABRICATION TOLERANCES  
 EXCEPT AS NOTED  
 FROM 0 TO 10 INCHES ± 1/16  
 10 TO 50 INCHES ± 1/8  
 50 INCHES AND ABOVE ± 1/4

FIND NO.	PART NO.	DESCRIPTION	QTY	MATERIAL	CODE IDENT
LIST OF MATERIAL (LM)					
DIMTS ON MACHINED DIMENSIONS EXCEPT AS NOTED		150" STELLAR TELESCOPE MOUNTING			
ANGULAR = ± 1/4°		DRAWN R. J. REZ			
LINEAR = ± .001		CHECK 3/1/68			
X = ± .001		ENGR			
XX = ± .003		MATERIAL			
XXX = ± .005		W.G.N 103017			
FRACTIONAL = ± 1/32		E 16603			
BREAK ALL SHARP EDGES		SHEET 1 OF 2			
MATERIAL		SCALE 1/24 WT			

WESTERN GEAR CORPORATION  
 HEAVY MACHINERY DIVISION  
 EVERETT, WASHINGTON  
 OUTLINE  
 HORSESHOE ASSY  
 W.G.N 103017  
 E 16603  
 2150.250E.001  
 SCALE 1/24 WT  
 LB SHEET 1 OF 2