

BILL OF MATERIAL				SIZES OF MATERIAL NOTED DO NOT INCLUDE STOCK ALLOWANCE FOR MACHINING AND CUTTING OFF EXCEPT AS NOTED. THE SIZE SPECIFIES THE MATERIAL REQUIRED FOR ONE PIECE ONLY. QUANTITIES NOTED ARE THE TOTAL NUMBER REQUIRED.	
ITEM	DWG. NO.	QTY.	MATERIAL	DESCRIPTION	WEIGHT
1	2150-251E	1		HORSESHOE STRUCTURE & JOURNAL	2740
2	2150-252E	1		PA. COUNTERWEIGHT - VERTICAL	2300
3	2150-253E	1		PA. COUNTERWEIGHT - HORIZONTAL	2925
4	2150-254E	1		COUDE 4 ASS'Y	2510
5	2150-255E	1		DECLINATION PRE-LOAD ASS'Y	800

ESTIMATED WEIGHT 248,415 LBS.

POLAR AXIS, HORIZONTAL ADJUSTABLE COUNTERWEIGHT DRIVE
 MOTOR: BOSTON #EUB NEMA C FLG
 VOLTAGE: 230/460 VAC
 SPEED: 1750 RPM (35 RPM OUTPUT)
 PHASE 3, ~60 CY
 LIMIT OF TRAVEL 49 1/4 IN
 TRAVEL SPEED 875 "/MIN, TRAVEL TIME 57 MIN
 (REF) 2150.258-E000

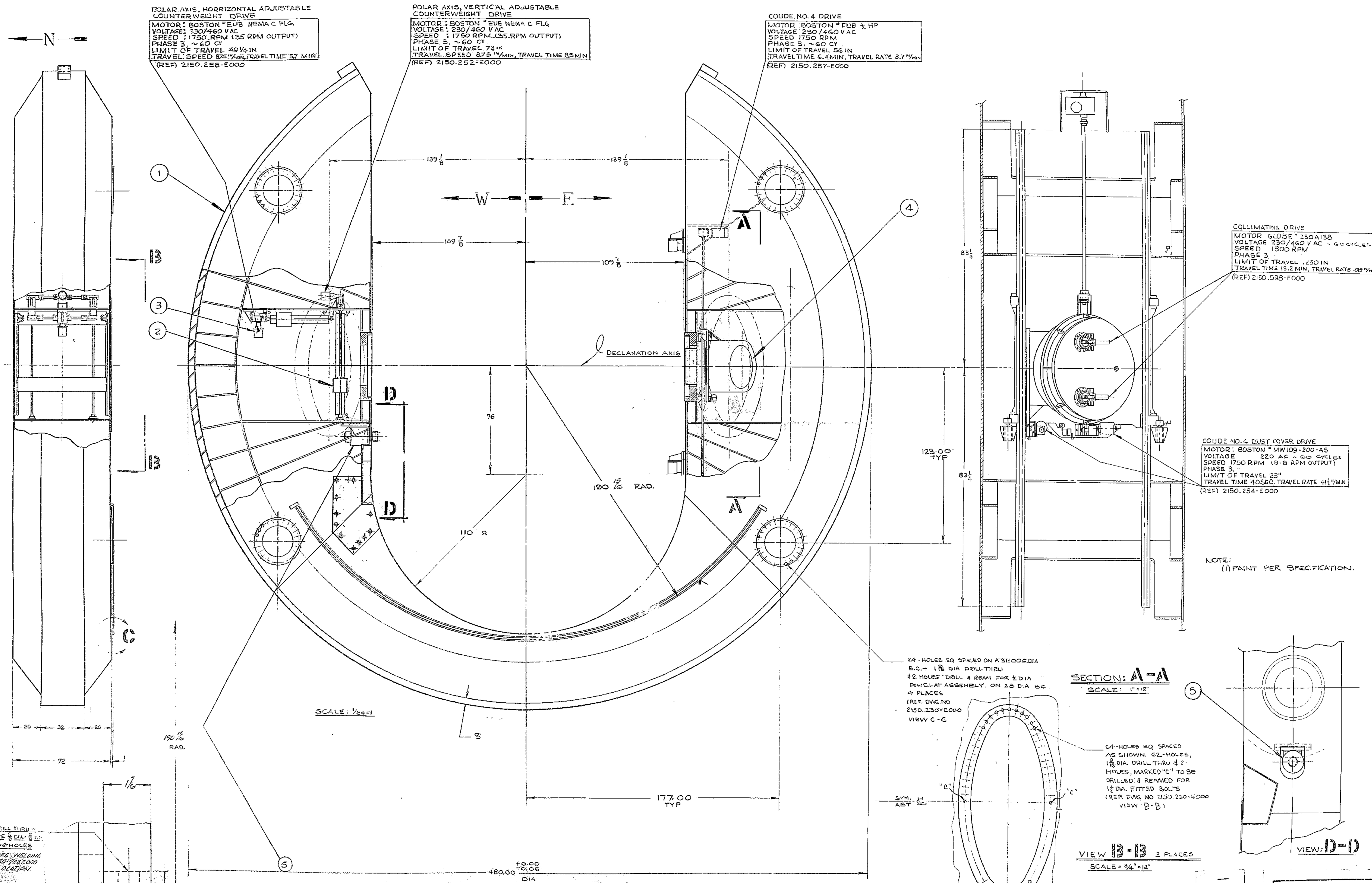
POLAR AXIS, VERTICAL ADJUSTABLE COUNTERWEIGHT DRIVE
 MOTOR: BOSTON #EUB NEMA C FLG
 VOLTAGE: 230/460 VAC
 SPEED: 1750 RPM (35 RPM OUTPUT)
 PHASE 3, ~60 CY
 LIMIT OF TRAVEL 74 IN
 TRAVEL SPEED 875 "/MIN, TRAVEL TIME 85 MIN
 (REF) 2150.252-E000

COUDE NO. 4 DRIVE
 MOTOR: BOSTON #FUB 1/2 HP
 VOLTAGE: 230/460 VAC
 SPEED: 1750 RPM
 PHASE 3, ~60 CY
 LIMIT OF TRAVEL 96 IN
 TRAVEL TIME 6.4 MIN, TRAVEL RATE 8.7 "/MIN
 (REF) 2150.257-E000

COLLIMATING DRIVE
 MOTOR: GLOBE #230A138
 VOLTAGE: 230/460 VAC - 60 CYCLES
 SPEED: 1800 RPM
 PHASE 3
 LIMIT OF TRAVEL .250 IN
 TRAVEL TIME 15.2 MIN, TRAVEL RATE .019 "/MIN
 (REF) 2150.598-E000

COUDE NO. 4 DUST COVER DRIVE
 MOTOR: BOSTON #MW100-200-AS
 VOLTAGE: 220 AC - 60 CYCLES
 SPEED: 1750 RPM (9.8 RPM OUTPUT)
 PHASE 3
 LIMIT OF TRAVEL 23"
 TRAVEL TIME 40 SEC, TRAVEL RATE 4 1/2 "/MIN
 (REF) 2150.254-E000

NOTE:
 (1) PAINT PER SPECIFICATION.



24 HOLES EQ SPACED ON A 311.000 DIA
 B.C. = 1 1/8 DIA DRILL THRU
 #2 HOLES DRILL & REAM FOR 1/2 DIA
 DOWEL AT ASSEMBLY, ON 25 DIA B.C.
 4 PLACES
 (REF. DWG NO
 2150.230-E000
 VIEW C-C

SECTION: A-A
 SCALE: 1"=12"

24 HOLES EQ SPACED
 AS SHOWN, G2 HOLES,
 1/2 DIA. DRILL THRU & 2-
 HOLES, MARKED "C" TO BE
 DRILLED & REAMED FOR
 1/2 DIA. FITTED BOLTS
 (REF. DWG NO 2150.230-E000
 VIEW B-B)

VIEW B-B 3 PLACES
 SCALE: 3/4"=12"

VIEW D-D

NOTE:
 HOLE PATTERN & OUTSIDE DIMS OF STRUT MOUNTING
 FLANGES TO BE AS SHOWN IN VIEW B-B, F-R OF
 DWG # 2150.230-E000.

DETAIL C
 FULL SIZE

W.R. LYDSTER
 ENGINEERS DESIGNERS
 SAN JOSE CALIF.

FOR ASSEMBLY SEE 2150.200E.000

KITT PEAK NATIONAL OBSERVATORY
 ASSOCIATION OF UNIVERSITIES FOR RESEARCH IN ASTRONOMY, INC.
 UNDER CONTRACT WITH
 NATIONAL SCIENCE FOUNDATION

150" STELLAR TELESCOPE
 NAME: HORSESHOE ASSY.
 SCALE: VARIOUS
 PRINT ISSUED

DESIGNED BY	DATE	APPROVED BY	DATE	DRAWING NUMBER	REV.
A	REVISED PER LIST			2150.250-E000 A	