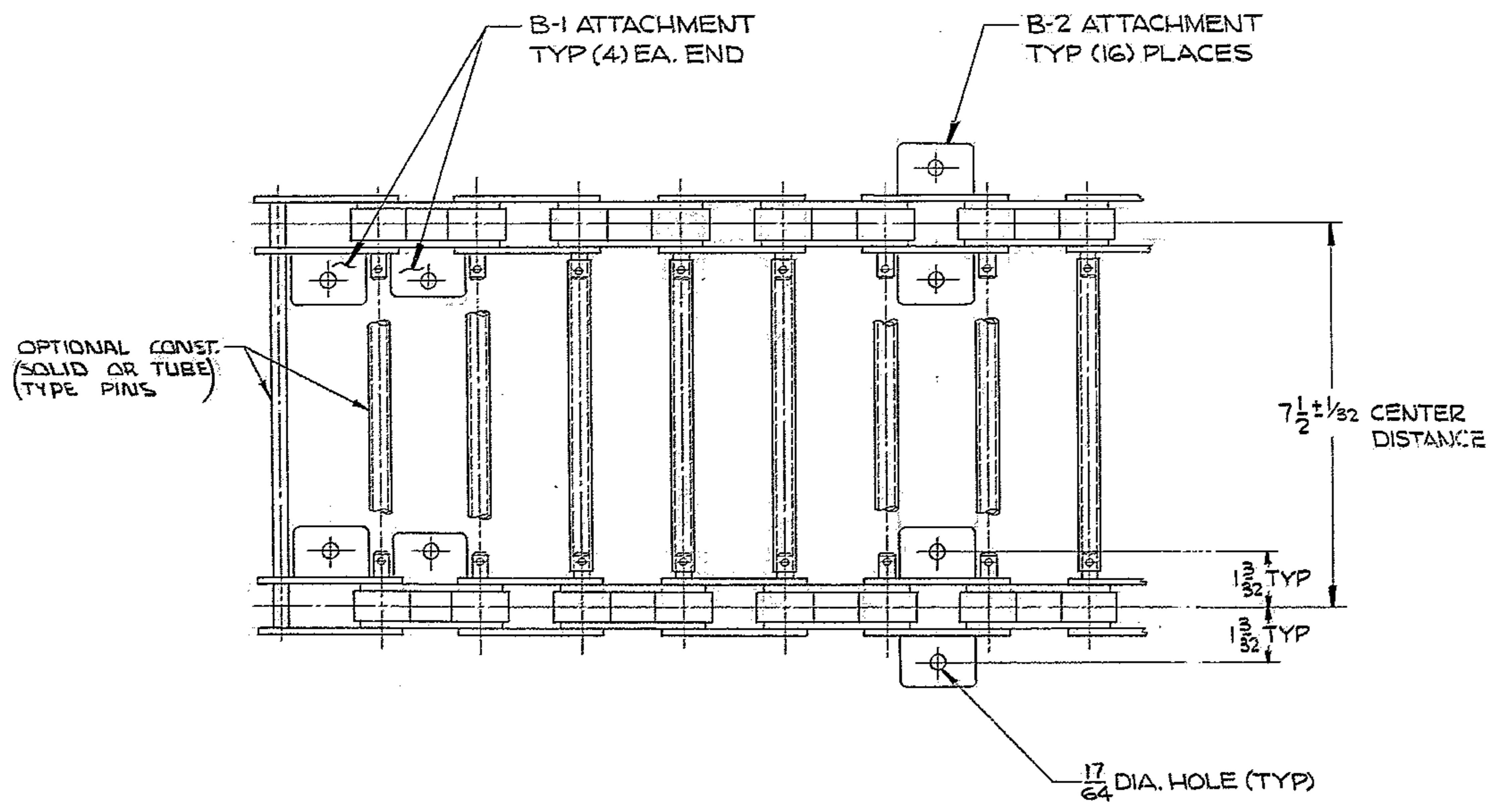
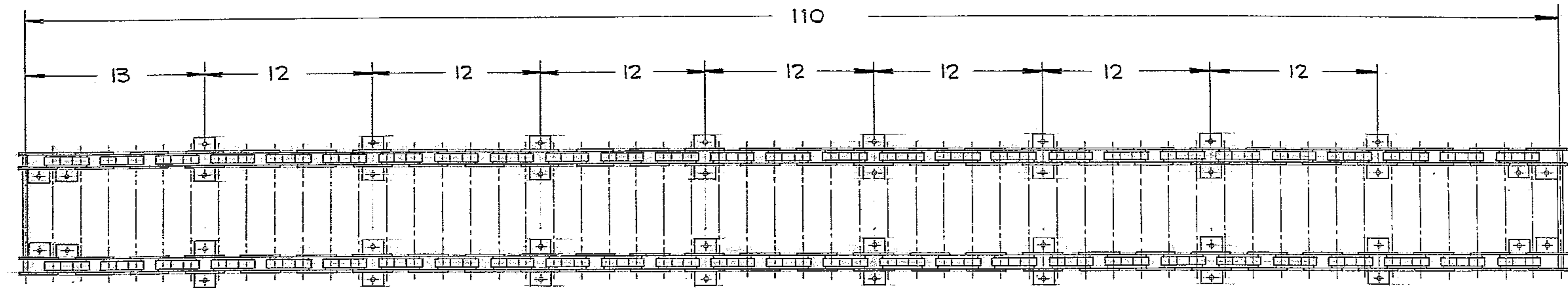


THIS DOCUMENT CONTAINS INFORMATION PROPRIETARY TO WESTERN GEAR CORPORATION. ALL DESIGN, MANUFACTURING, REPRODUCTION, USE, PATENT AND SALES RIGHTS REGARDING THE SAME ARE HEREBY EXPRESSLY RESERVED BY WESTERN GEAR CORPORATION. THIS DOCUMENT IS SUBMITTED FOR REFERENCE PURPOSES ONLY AND SHALL NOT BE DISCLOSED TO ANY UNAUTHORIZED PERSON OR INCORPORATED INTO ANY OTHER PROJECT.

REVISIONS			
ZONE	LTR	DESCRIPTION	DATE APPROVED
	A	RELEASE FOR MANUFACTURE	1-20-70



NOTE 1
 1. MAT'L: ROLLER CHAIN (DOUBLE ROW)
 ASA # C.20B2
 110 TOTAL LINKS - 110" LONG
 55 LINKS EACH SIDE
 8 LINKS WITH B-1 ATTACHMENT
 16 LINKS WITH B-2 ATTACHMENT
 86 LINKS WITH NO ATTACHMENTS
 3/8 x 1/8 DIA ROLLERS
 MAT'L - STEEL
 PINS MAY BE RIVETED OR COTTERED.

NEXT ASSY: 2150.250E002 (W.G. N102901)

1168

FIND NO.	PART NO.	DESCRIPTION	QTY	MATERIAL	CODE IDENT
LIST OF MATERIAL (LM)					
LIMITS ON MACHINED DIMENSIONS EXCEPT AS NOTED ANGULAR = ± 1° 0'		150 INCH STELLAR TELESCOPE MOUNTING		WESTERN HEAVY MACHINERY DIVISION GEAR CORPORATION EVERETT, WASHINGTON	
LINEAR: X = ± .1 .XXX = ± .010 .XX = ± .03 FRACTIONAL = ± 1/32		DRAWN WHITE	1-18-71	CHAIN D.A. CABLE WRAP-UP	
BREAK ALL SHARP EDGES		CHECK	1-20-71		
MATERIAL SEE NOTE 1		ENGR SKILES			
		W.G. E107605	SIZE	CODE IDENT NO.	REV
		APPROVED	D	16603	2150.250D064 A
			SCALE NOTED	WT	LB SHEET 1 OF 1