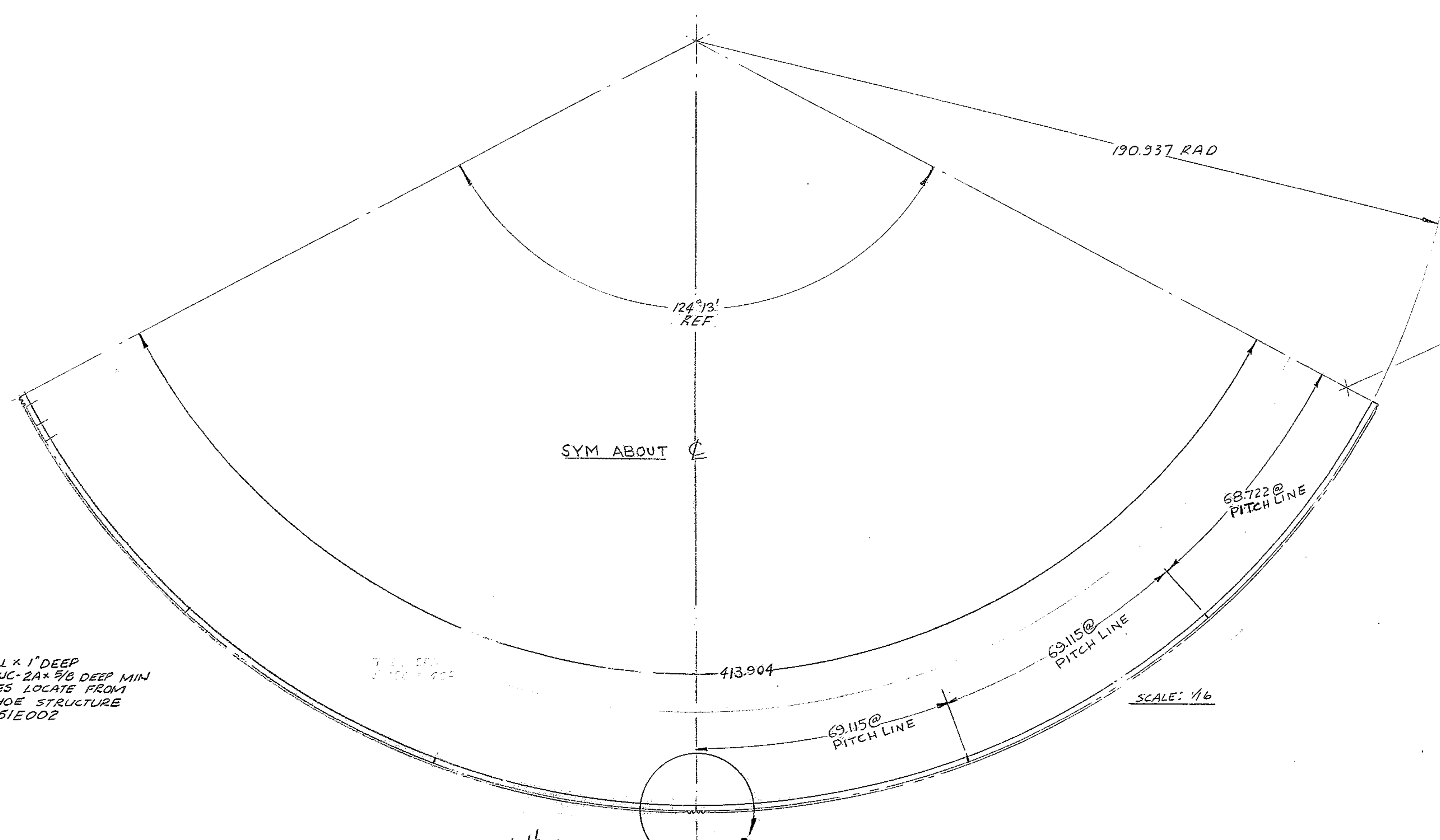


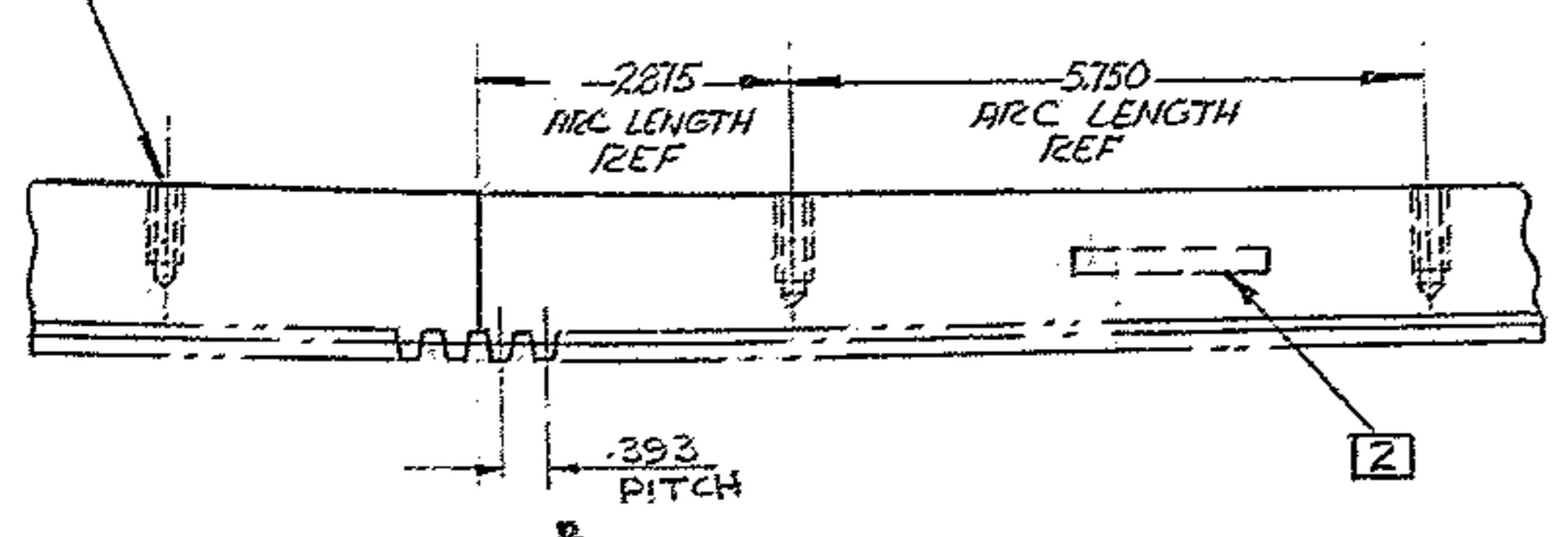
REVISIONS				
ZONE	LTR	DESCRIPTION	DATE	APPROVED
A		RELEASED FOR MFG. PER AURA	11 FEB 69	G.R.
A		ADDED "REF" TO DIMS # (72) 3/8-16 TAPPED HOLES	11 FEB 69	G.R.
B		ADDED 69.115, 68.722, .393 PITCH	4/8/76	GP
		413.904 WAS 414	4/8/70	GR
C		DELETED SILVER BRAZE	3-26-73	LDS



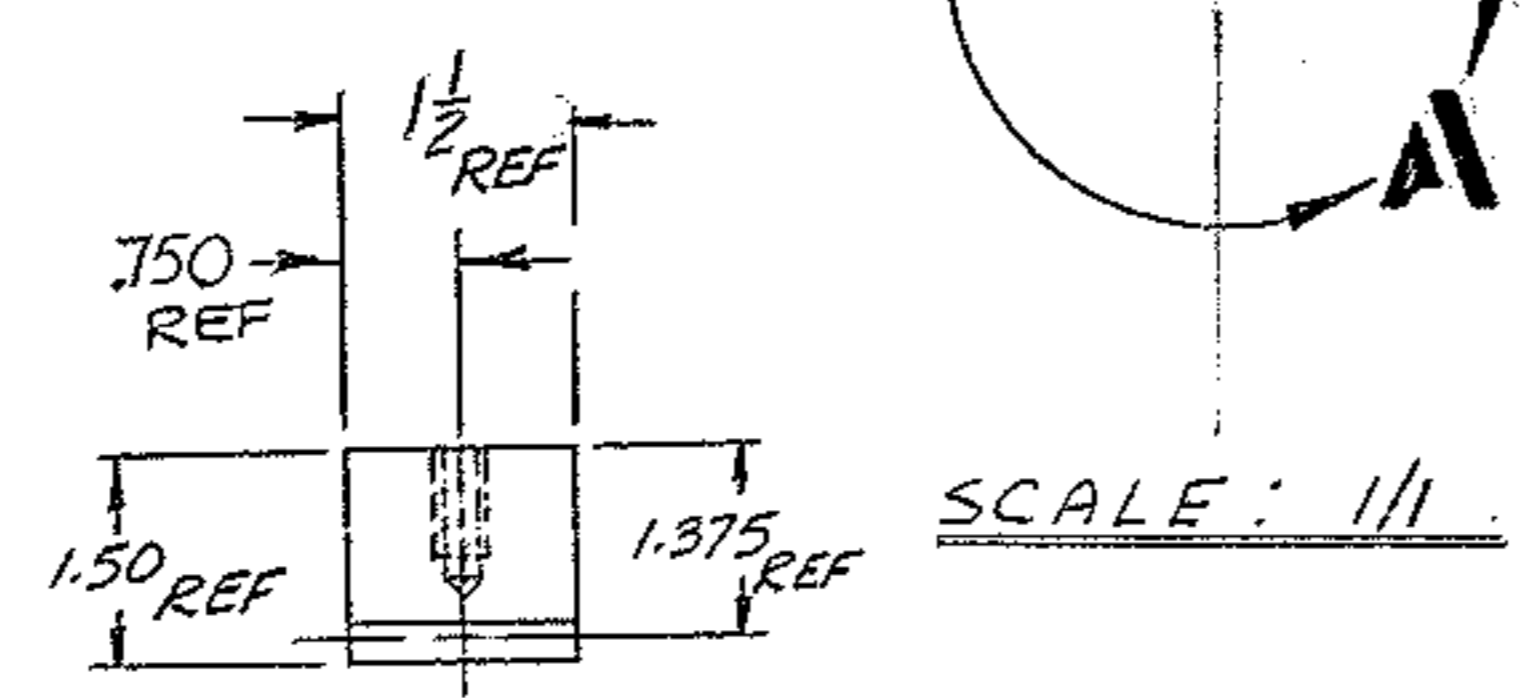
TRIM AT ASSY IF REQUIRED

- NOTE:
1. ALL DIMENSIONS IN INCHES
  2. STAMP PART NO "2150.250 D031"

5/16 DRILL x 1" DEEP  
 3/8-16UNC-2A x 5/8 DEEP MIN  
 72 HOLES LOCATE FROM  
 HORSESHOE STRUCTURE  
 2150.251E002



DETAIL A  
 SCALE: 1/2  
 JOINT DETAIL - TYP 5 PLACES  
 MAX. JOINT TOOTH SPACING ERROR TO BE .002  
 PITCH LINE TO MATCH TO WITHIN .002



SCALE: 1/11

NEXT ASSY: 2150.250 F002 (WGN 102 901)

REF. FILE 1168

WESTERN GEAR CORPORATION  
 CONSTRUCTION PROJECTS  
 DEPARTMENT  
 APPROVED FOR  
 PROCUREMENT  
 PG DATE 2-12-69

FIND NO.	PART NO.	DESCRIPTION	QTY	MATERIAL	CODE IDENT
LIST OF MATERIAL (LM)					
LIMITS ON MACHINED DIMENSIONS EXCEPT AS NOTED		150" STELLAR TELESCOPE MOUNTING			
ANGULAR = ± 1° 0'		DRAWN A. GREEN			
LINEAR:		CHECKED [Signature] 7/5/68			
X = ± .1		ENGR			
.XXX = ± .010		MATERIAL			
.XX = ± .03		MAKE FROM RACK - BOSTON GEAR * L 708 (STL) 6 FT SECTION 6 SECTIONS REQ'D			
BREAK ALL SHARP EDGES		W.G.E 107 772			
MATERIAL		APPROVED			
SIZE		CODE IDENT NO.		REV	
D		16603		2150.250.D031 C	
SCALE NOTED		WT		LB SHEET 1 OF 1	