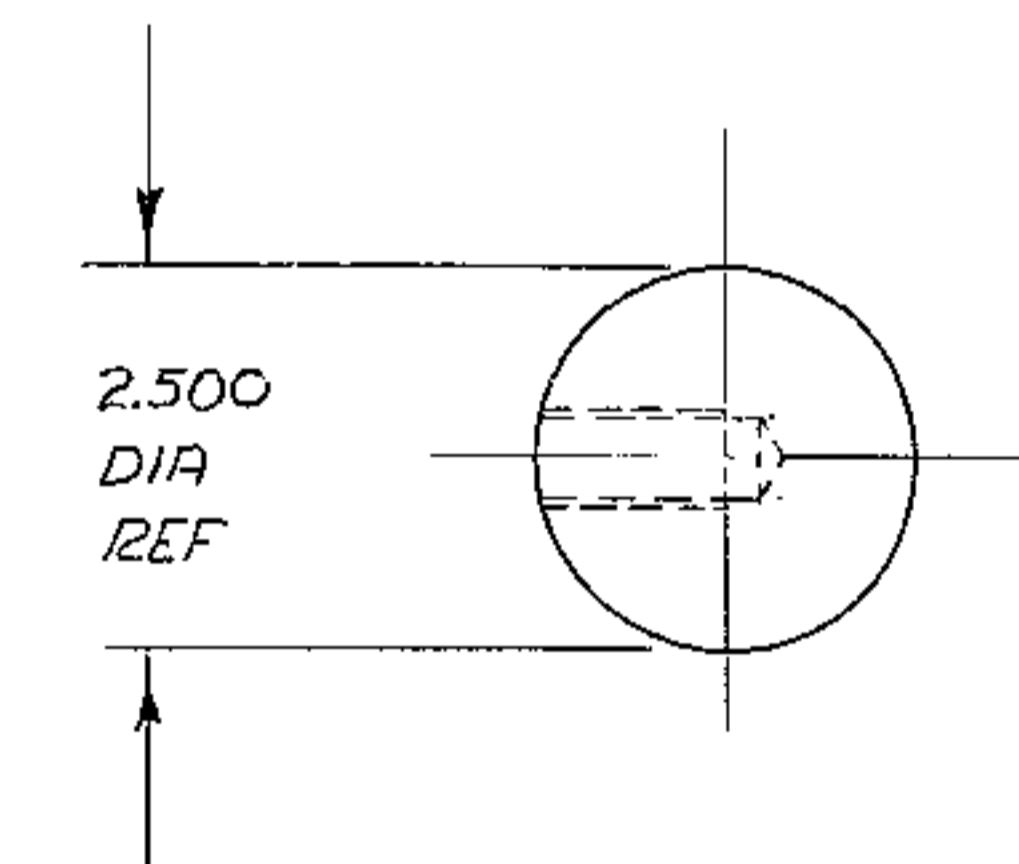
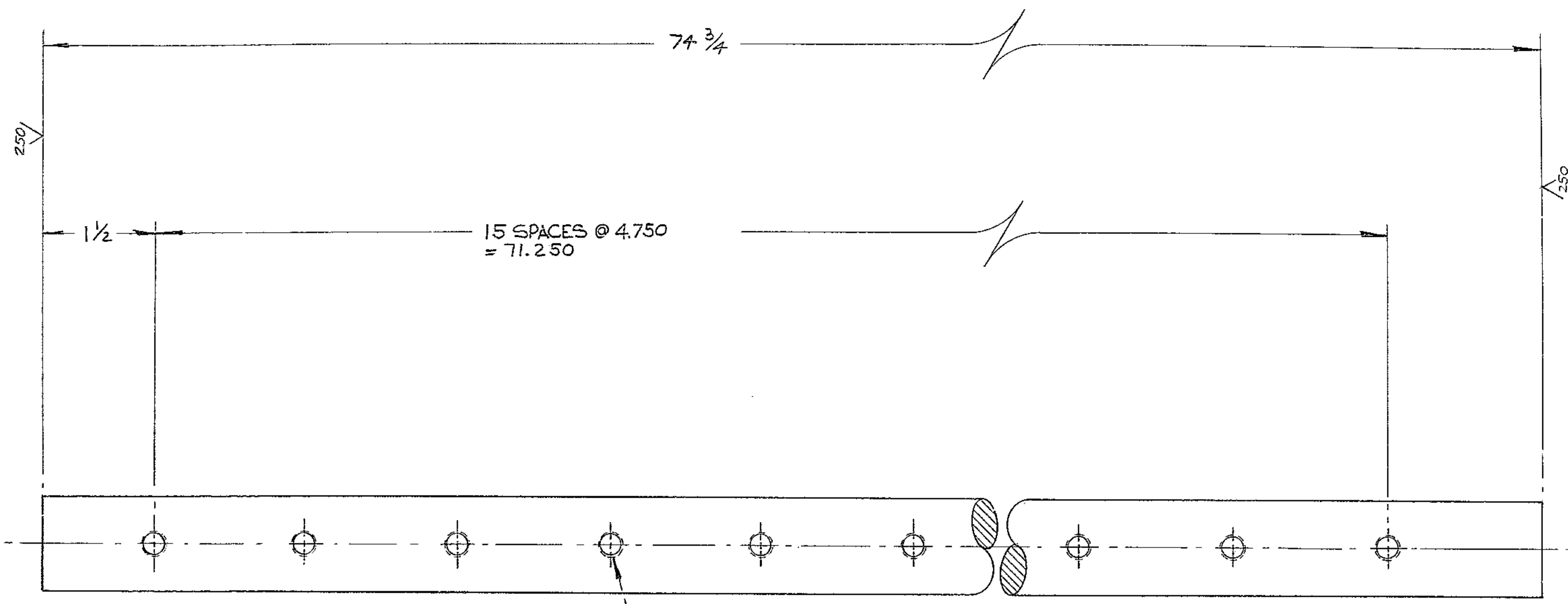


8 7 6 5 4 3 2 1

REVISIONS				
ZONE	LTR	DESCRIPTION	DATE	APPROVED
	A	REL. FOR MANUFACTURE PER AURA	3/12/68	PG



DRILL $\frac{17}{32}$ DIA. x $\frac{1}{4}$ DEEP MIN. &
TAP $\frac{5}{8}$ -11NC - 2B x $\frac{1}{2}$ DEEP MIN.;
16 HOLES.

- NOTE
1. ALL DIMENSIONS ARE IN INCHES
 2. TAG WITH PART NO. 2150.250 D010

NEXT ASSY: 2150.250E002 (WGN 102,901) REF FILE 1108

WESTERN GEAR CORPORATION
CONSTRUCTION PROJECTS
DEPARTMENT
APPROVED FOR
PROCUREMENT
P. G. G. G. DATE 3/10/69

FIND NO.	PART NO.	DESCRIPTION	QTY	MATERIAL	CODE IDENT
LIST OF MATERIAL (LM)					
LIMITS ON MACHINED DIMENSIONS EXCEPT AS NOTED		150 IN. STELLAR TELESCOPE MOUNTING			
ANGULAR = ± 1° 0'		DRAWN L. GOLD 4-4-68			
LINEAR:		CHECK <i>W. G. G.</i> 7-15-68			
X = ± .1 .XXX = ± .010		ENGR			
XX = ± .03 FRACTIONAL = ± 1.32		MATERIAL			
BREAK ALL SHARP EDGES		THOMPSON SHAFT.			
		CLASS 'L' STL. 2 1/2 DIA.			
		W.G.E 107,697		SIZE	CODE IDENT NO.
		APPROVED		D 16603	2150.250D010
				SCALE 1/1	WT 100 LB SHEET 1 OF 1

WESTERN GEAR CORPORATION
HEAVY MACHINERY DIVISION
EVERETT, WASHINGTON

SHAFT, BUSHING, VERTICAL
HORSESHOE ASSY