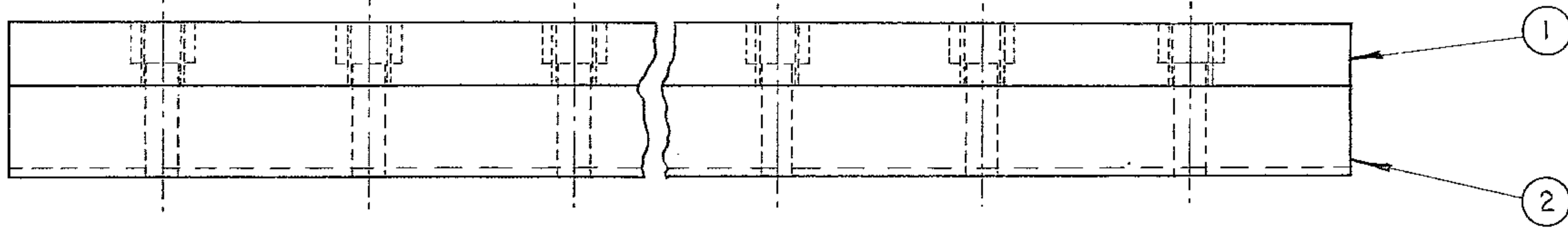
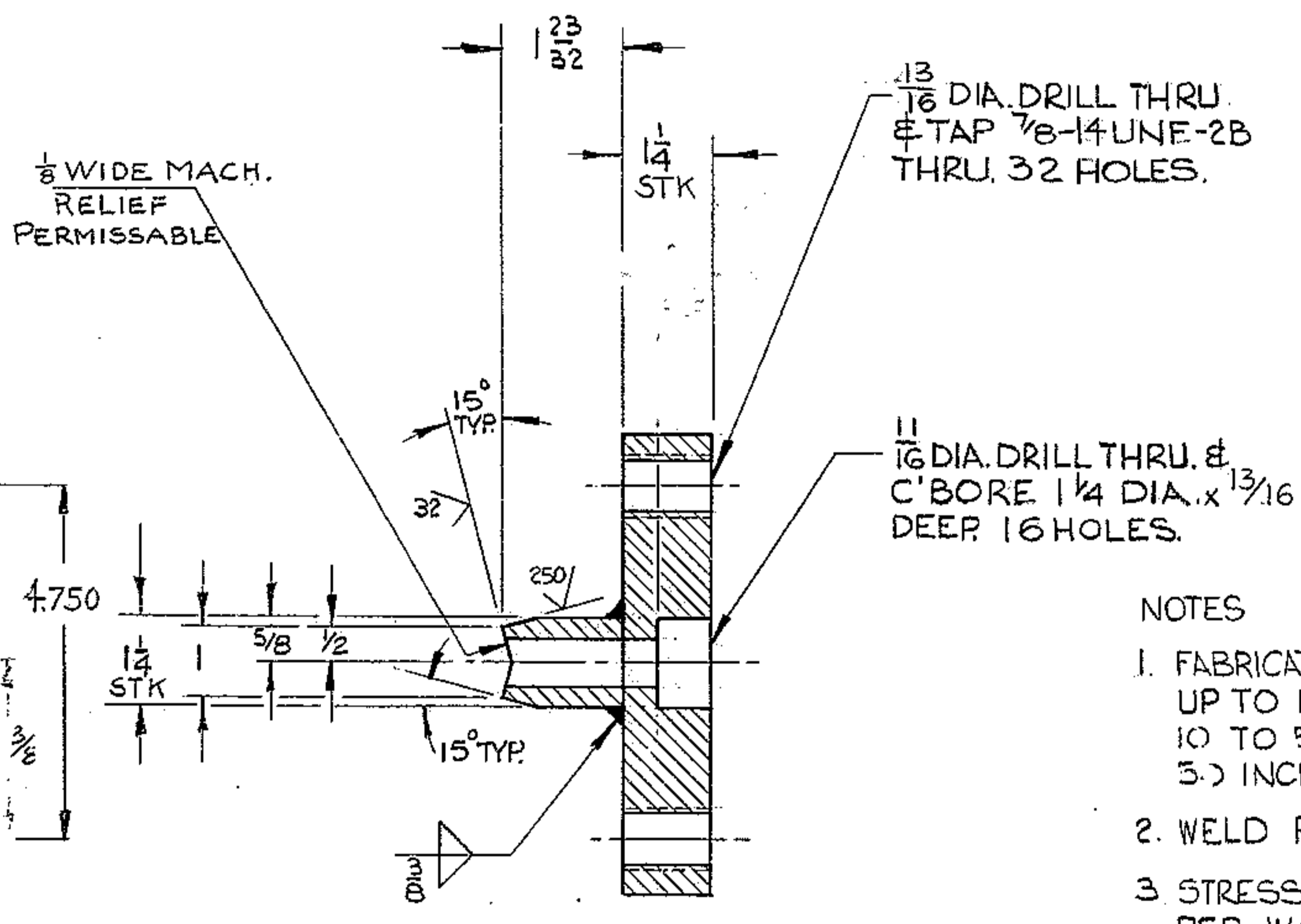
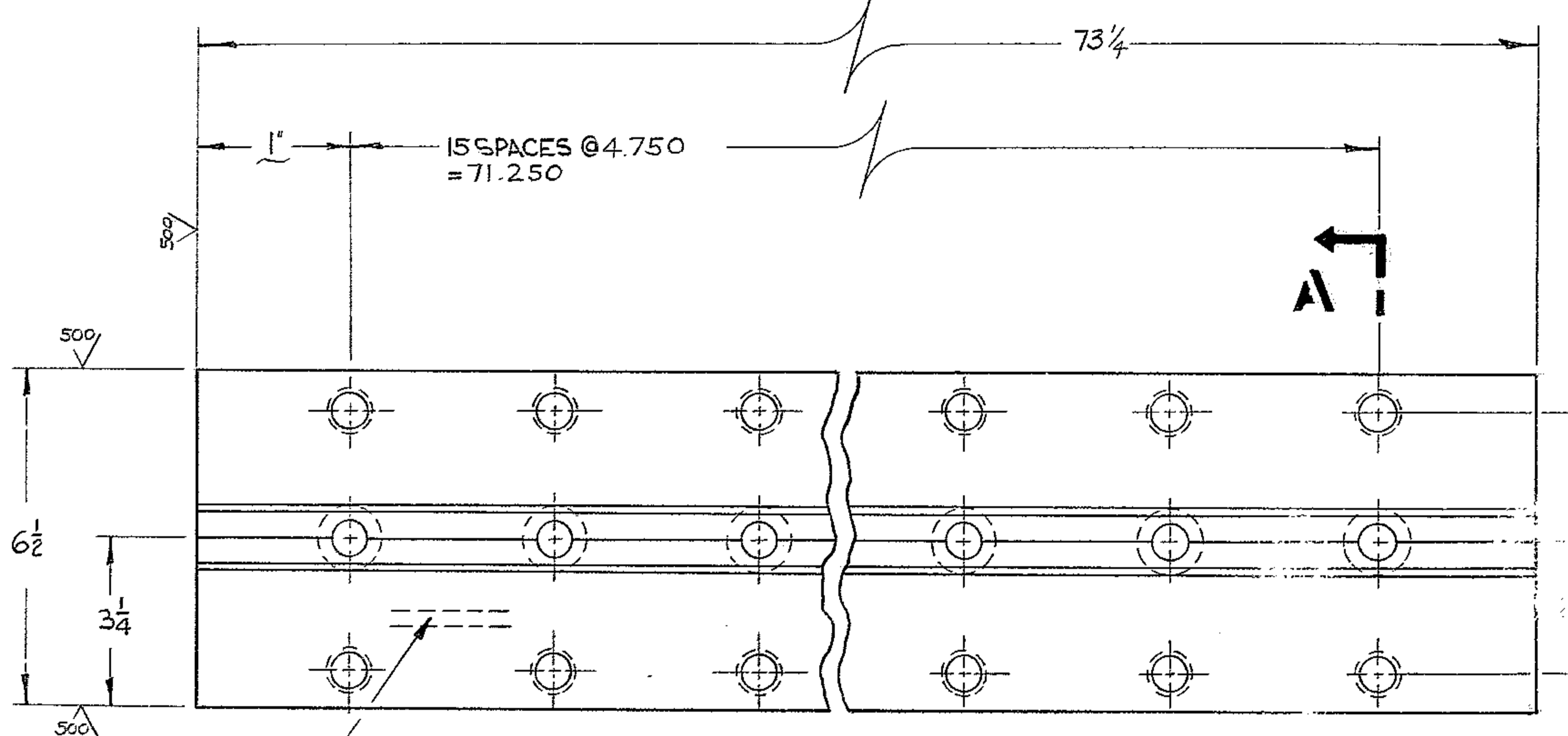


REVISIONS				
ZONE	LTR	DESCRIPTION	DATE	APPROVED
A		REL. FOR MANUFACTURE PER AURA	3/12/68	P.G.
C 5	B	CHANGED 72 1/4 DIM TO 73 1/4	6/24/69	P.G.
C		DELETED 29/32 DIM		



MATERIAL LIST				
PC. NO.	QTY.	DESCRIPTION	MAT'L & SPEC.	ROUGH WT.
1	1	PL 6 1/2 x 1 1/4 x 73 1/4	STL. ASTM-A36	165
2	1	PL 1 1/8 x 1 1/4 x 73 1/4	STL. ASTM-A36	48



- NOTES
- FABRICATION TOLERANCES, EXCEPT AS NOTED
UP TO 10 INCHES $\pm 1/16$
10 TO 50 INCHES $\pm 1/8$
50 INCHES & OVER $\pm 1/4$
 - WELD PER WGC SPECIFICATION 752, APPENDIX T1
 - STRESS RELIEVE AFTER WELDING & BEFORE MACHINING PER WGC SPECIFICATION NO. 510.
 - APPLY ONE COAT OF PRIME PAINT ALL OVER PER WGC SPECIFICATION NO. 511 IMMEDIATELY AFTER STRESS RELIEVING AND CLEANING
 - ALL DIMENSIONS ARE IN INCHES
 - ALL SURFACES MARKED \surd TO BE \surd^{125} EXCEPT AS NOTED.

STAMP PART NO. 2150.250D008

NEXT ASS'Y: 2150.250E002 (WGN 102,901)

FILE 1168

WESTERN GEAR CORPORATION
CONSTRUCTION PROJECTS
DEPARTMENT
APPROVED FOR
PROCUREMENT

P. G. Grefe DATE 3/18/69

FIND NO.	PART NO.	DESCRIPTION	QTY	MATERIAL	CODE IDENT
LIST OF MATERIAL (LM)					
LIMITS ON MACHINED DIMENSIONS EXCEPT AS NOTED		150 IN. STELLAR TELESCOPE MOUNTING		HEAVY MACHINERY DIVISION EVERETT, WASHINGTON	
ANGULAR $\pm 1^{\circ} 0'$		DRAWN L. GOLD 4/5/68			
LINEAR: .X $\pm \pm .1$.XXX $\pm \pm .010$		CHECKED [Signature] 7/5/68		WAY, VERTICAL HORSESHOE ASS'Y	
.XX $\pm \pm .03$ FRACTIONAL $\pm \pm 1/32$		ENGR			
MATERIAL					
SEE MAT'L LIST					
APPROVED				W.G.E 107698	SIZE CODE IDENT NO.
				D 16603	2150.250D008 C
SCALE 1/2		WT 261		LB SHEET OF	