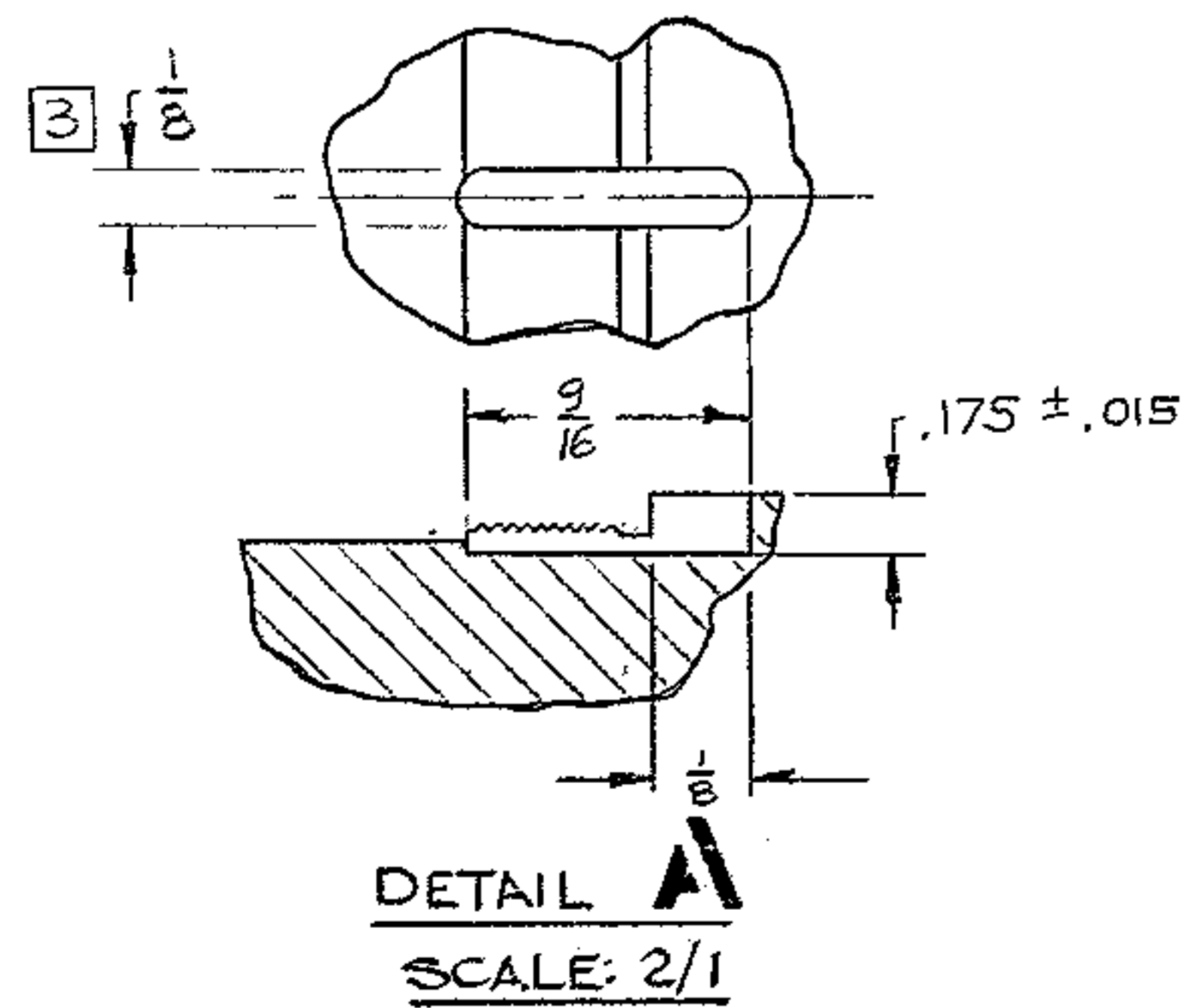
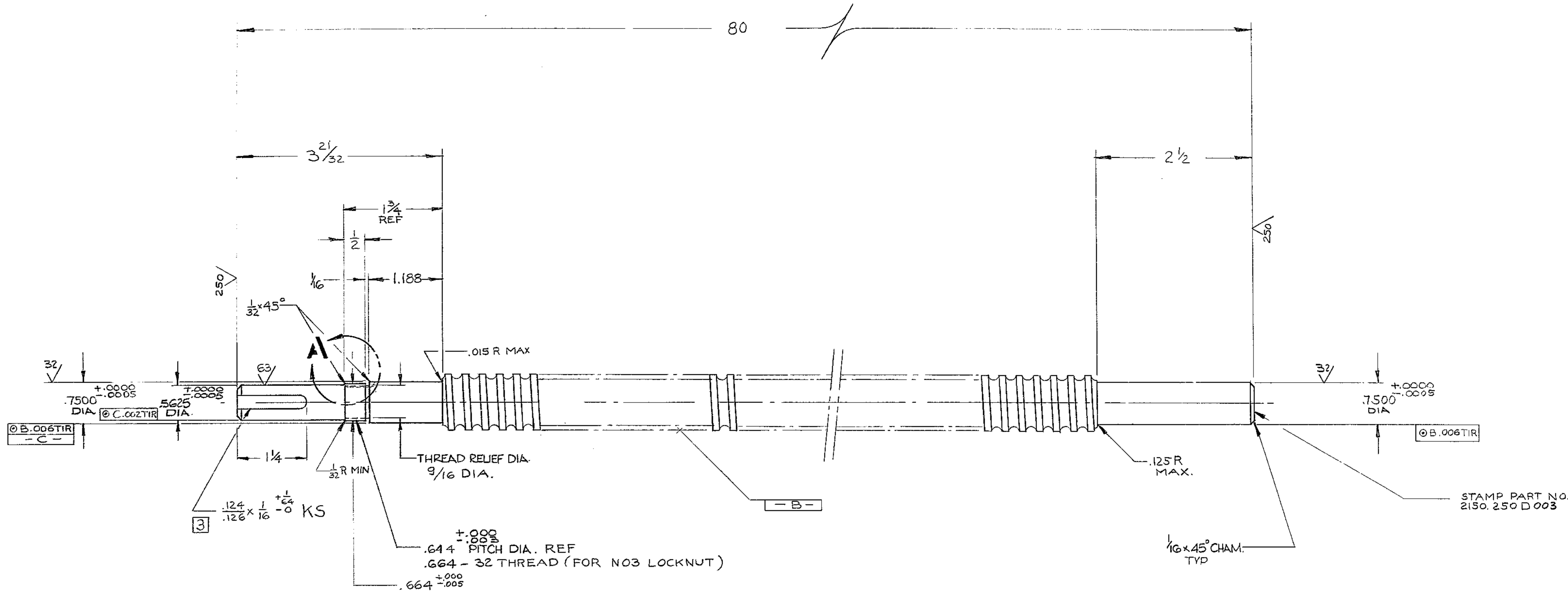


REVISIONS				
ZONE	LTR	DESCRIPTION	DATE	APPROVED
	A	REL. FOR MANUFACTURE PER AURA	3/12/69	PG
	B	OB. 006 TIR WAS O B. 003 TIR & O B. 002 TIR	6/6/69	PG



- NOTES:
- ALL DIMENSIONS ARE IN INCHES
 - FINISH $\sqrt{125}$ EXCEPT AS NOTED
 - RADIAL ORIENTATION OF KS'S NOT IMPORTANT--
- KS MAY BE IN LINE

1168

NEXT ASSY: 2150.250E002 (WGN 102 901)

WESTERN GEAR CORPORATION
CONSTRUCTION PROJECTS
DEPARTMENT
APPROVED FOR
PROCUREMENT
P. J. [Signature] DATE 3/18/69

FIND NO.	PART NO.	DESCRIPTION	QTY	MATERIAL	CODE IDENT
LIST OF MATERIAL (LM)					
LIMITS ON MACHINED DIMENSIONS EXCEPT AS NOTED		150 th STELLAR TELESCOPE MOUNTING		HEAVY MACHINERY DIVISION EVERETT, WASHINGTON	
ANGULAR = ± 1°		DRAWN L.GOLD 4-2-68			
LINEAR:		CHECKED <i>M. [Signature]</i> 7-9-68		SCREW, R. H. VERT. HORSESHOE ASSY	
X = ± .1 XXX = ± .010		ENGR			
XX = ± .03 FRACTIONAL = ± 1/32		MATERIAL		SIZE CODE IDENT NO. REV D 16603 2150.250D 003 B	
BREAK ALL SHARP EDGES		APPROVED		SCALE 1/1 WT ≈ 20 LB SHEET 1 OF 1	
MAKE OR PROCURE FROM SAGINAW NO 1000-0250-C2-SRT R. H.		WGE 107 695			