

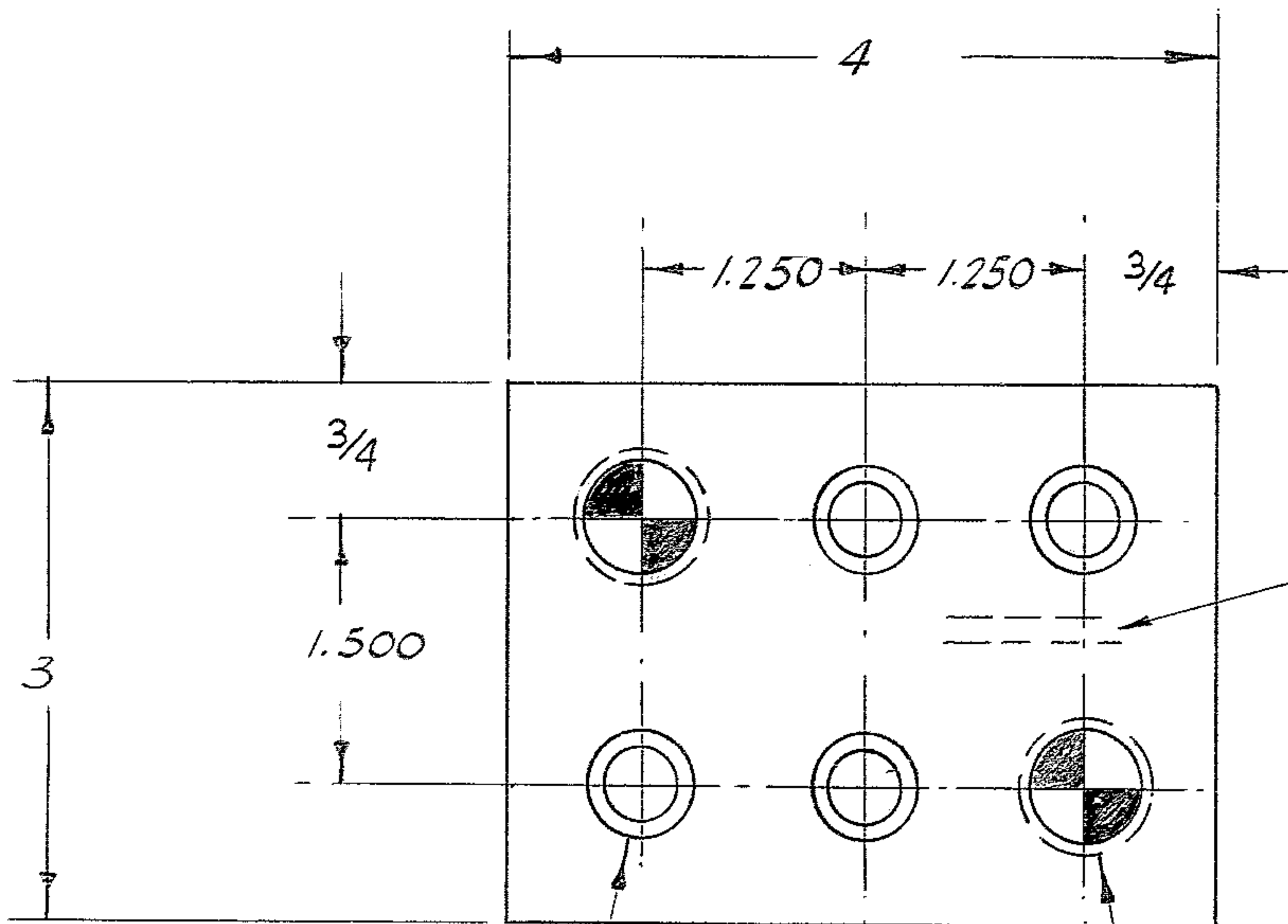
4

3

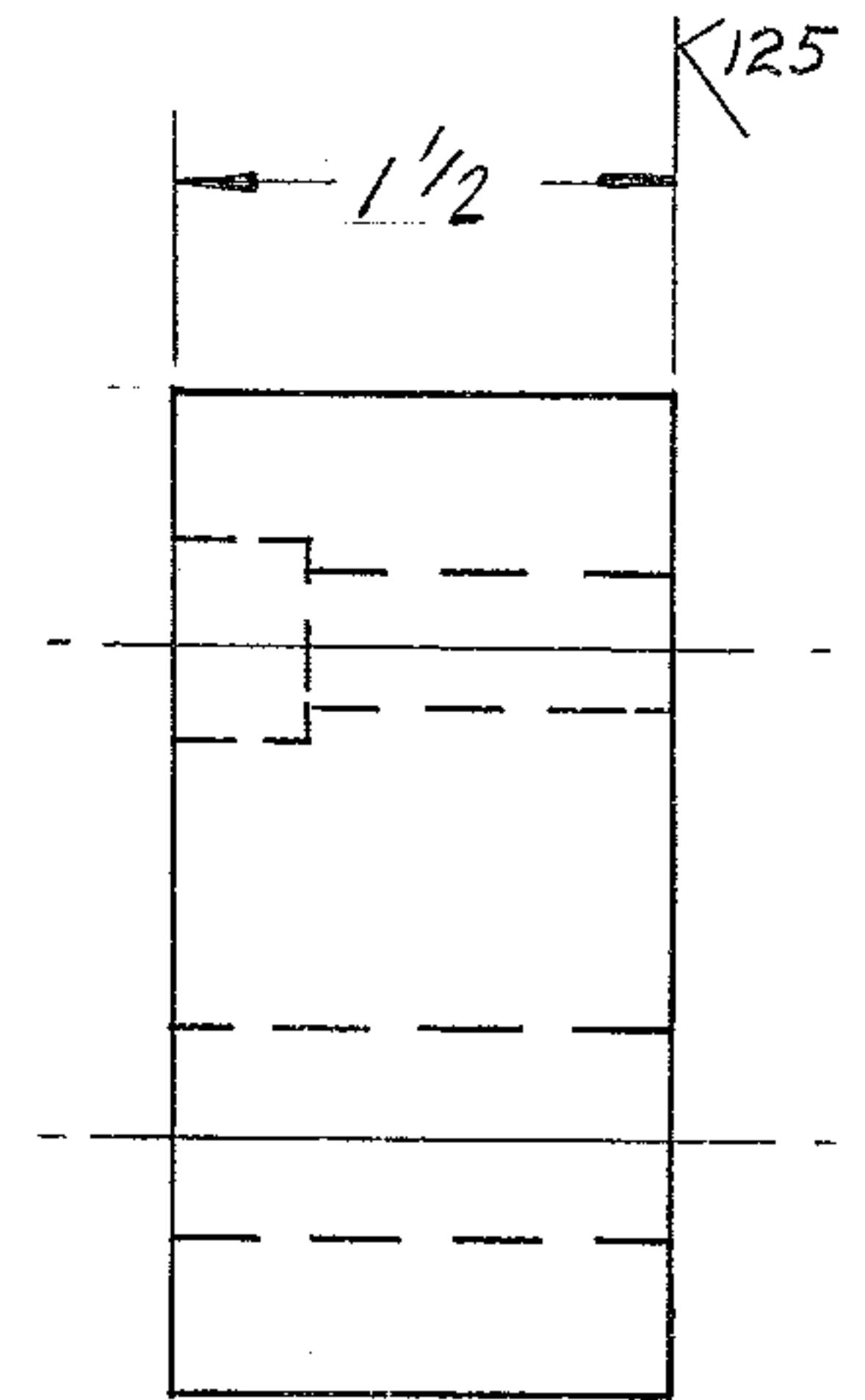
2

1

REVISIONS				
ZONE	LTR	DESCRIPTION	DATE	APPROVED
	A	REL FOR MFG PER AURA	11 FEB 63	G.R.



STAMP PART NO.  
"2150.250C032"



DRILL  $13/32$  DIA. THRU.  
C/BORE  $15/16$  DIA. x  
 $1/2$  DEEP - 4 PLACES

PILOT HOLE - DRILL  
 $5/8$  DIA THRU. - 2 REQ'D  
REAM TO SUIT  $3/4$  DIA.  
DOWEL AT ASSY.

NOTE:

1. ALL DIMENSIONS ARE IN INCHES
2. FINISH  $250/$  EXCEPT AS NOTED.

REF. FILE 1168

NEXT ASSY: 2150.250E002 (WGN 102 901)

FIND NO.	PART NO.	DESCRIPTION	QTY	MATERIAL	CODE IDENT
LIST OF MATERIAL (LM)					
LIMITS ON MACHINED DIMENSIONS EXCEPT AS NOTED ANGULAR = $\pm 1^\circ 0'$ LINEAR: X = $\pm .1$ .XXX = $\pm .010$ .XX = $\pm .03$ FRACTIONAL = $\pm 1/32$		150" STELLAR TELESCOPE MOUNTING			
DRAWN A. GREEN CHECK <i>F. H. W. 7-12-68</i> ENGR		HEAVY MACHINERY DIVISION EVERETT, WASHINGTON			
BREAK ALL SHARP EDGES		STOP - CASSE RAMP HORSESHOE ASSY.			
MATERIAL BAR $3 \times 1\frac{3}{4} \times 4$ STL AISI C1018 OR ASTM A-7		W.G.D 107 521	SIZE <b>C 16603</b>	CODE IDENT NO. 2150.250C032	REV A
APPROVED		SCALE 1/1	WT	LB	SHEET 1 OF 1

WESTERN GEAR CORPORATION  
CONSTRUCTION PROJECTS  
DEPARTMENT  
APPROVED FOR  
PROCUREMENT  
DATE 2-12-69