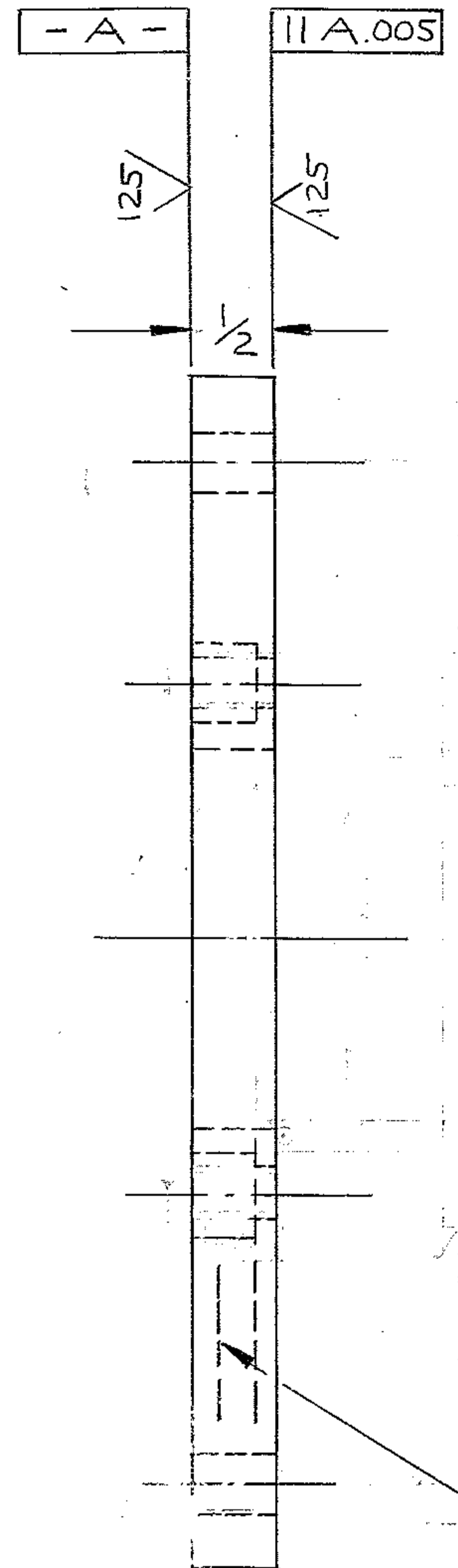
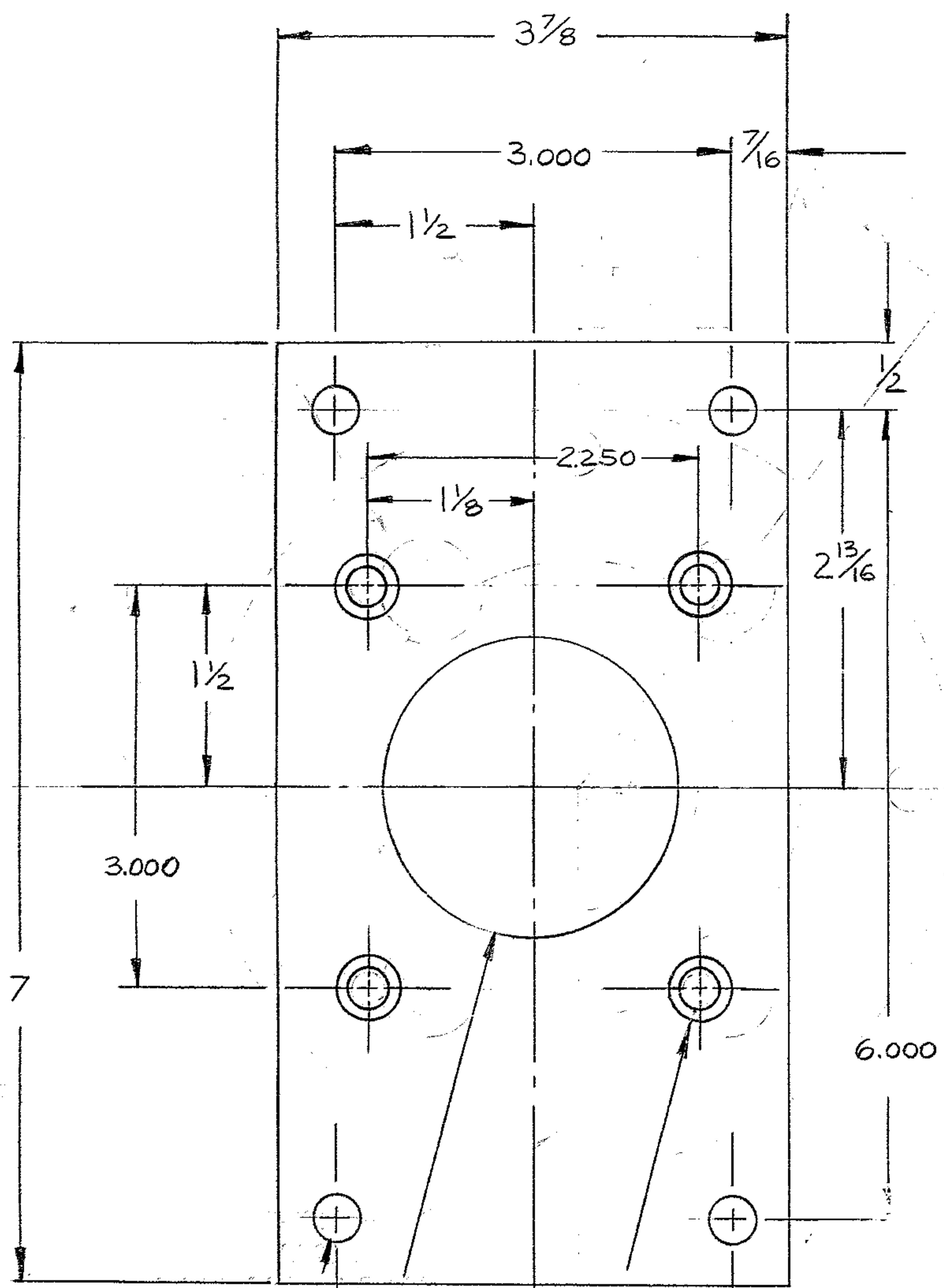


REVISIONS				
ZONE	LTR	DESCRIPTION	DATE	APPROVED
	A	RELEASED FOR CONSTR.	3/11/69	PG
		REVISED & REDRAWN		
	B	11/32 DIA HOLES WERE 5/16-18NC	4/23/73	LD5



NOTES:  
 1. ALL DIMENSIONS ARE IN INCHES.  
 2. FINISH  $\sqrt{125}$  ALL OVER EXCEPT AS NOTED

11/32 DIA THRU  
 1/2 DIA C'BORE x 1/4" DEEP  
 4 HOLES

250/  
 $\sqrt{2 3/16}$

3/8 DRILL  
 4 HOLES

NEXT ASSY : 2150.250 E002 (WG.N 102901)

REF. FILE 1168

WESTERN GEAR CORPORATION  
 CONSTRUCTION PROJECTS  
 DEPARTMENT  
 APPROVED FOR  
 PROCUREMENT  
 P. Grefe DATE 3/10/69

FIND NO.	PART NO.	DESCRIPTION	QTY	MATERIAL	CODE IDENT
LIST OF MATERIAL (LM)					
LIMITS ON MACHINED DIMENSIONS EXCEPT AS NOTED ANGULAR = ± 1° 0'		150 IN STELLAR TELESCOPE MOUNTING		<b>WESTERN GEAR CORPORATION</b> HEAVY MACHINERY DIVISION EVERETT, WASHINGTON	
LINEAR: X = ± .1    .XXX = ± .010 .XX = ± .03    FRACTIONAL = ± 1/32		DRAWN <i>D Thompson</i> CHECK <i>F. Midey</i> 8-1668		ADAPTER, POT MTG HORSE SHOE ASSY	
BREAK ALL SHARP EDGES		ENGR			
MATERIAL		WGD 107609		SIZE	CODE IDENT NO.
MATL : R 3 7/8 x 3/4 x 7/8 ASTM A-7		APPROVED		<b>C 16603</b>	2150.250C021
				SCALE 1/1	WT LB SHEET / OF /
					REV <b>B</b>