

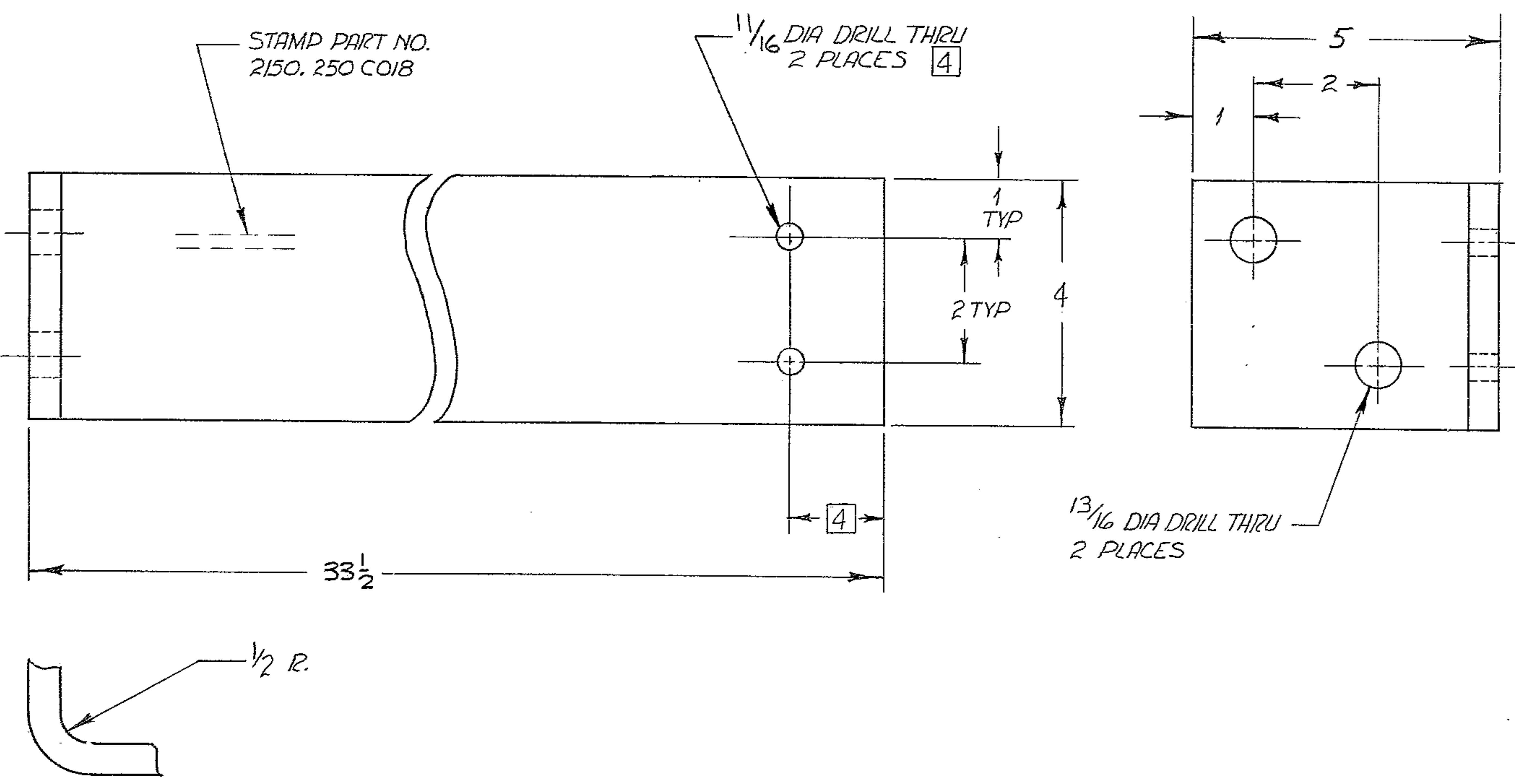
4

3

2

1

REVISIONS				
ZONE	LTR	DESCRIPTION	DATE	APPROVED
-	A	RELEASED FOR MANUFACTURING	12-17-69	JEB
C3	B	11/16 DIA WAS 13/16	12/24/70	
C4		33 1/2 WAS 36		



- NOTES
1. ALL DIMENSIONS ARE IN INCHES.
 2. STAMP PART NO. 2150.250 CO17
 3. MAT'L: BAR 4 X 1/2 X 41 STL AISI C1018
 - 4 LOCATE AT ASSY

REF. FILE 1168

NEXT ASSY: 2150.250 E002 (W.G.N 102901)

WESTERN GEAR CORPORATION
 CONSTRUCTION PROJECTS
 DEPARTMENT
**APPROVED FOR
 PROCUREMENT**
 JEB DATE 12-17-69

FIND NO.	PART NO.	DESCRIPTION	QTY	MATERIAL	CODE IDENT
LIST OF MATERIAL (LM)					
LIMITS ON MACHINED DIMENSIONS EXCEPT AS NOTED ANGULAR = ± 1° 0' LINEAR: .X = ± .1 .XXX = ± .010 .XX = ± .03 FRACTIONAL = ± 1/32		150 IN STELLAR TELESCOPE MOUNTING		WESTERN GEAR CORPORATION	
DRAWN D. Thompson		CHECK F. Watson 8-16-68		TIE BAR, RETAINER HORSESHOE ASSY	
ENGR					
MATERIAL		WG.D. 107611		SIZE C	CODE IDENT NO. 16603
		APPROVED		2150.250 CO18	REV B
				SCALE 1/2	WT LB SHEET / OF /