

5

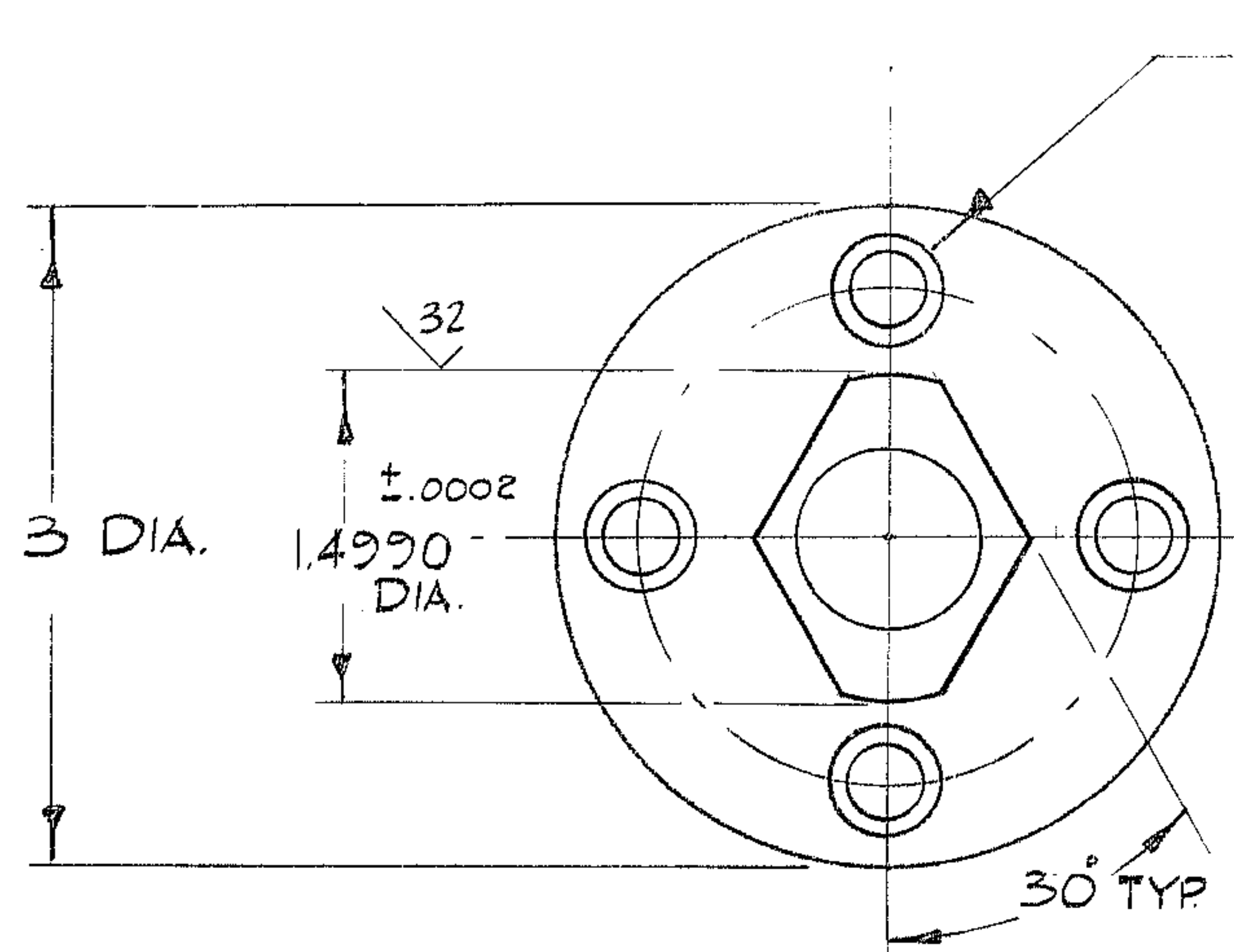
4

3

2

1

REVISIONS				
ZONE	LTR	DESCRIPTION	DATE	APPROVED
	A	REL. FOR MAN. PER AURA	2/17/69	GR
B-1	B	STL WAS 4140 & HT WAS 400 BHN	6/6/69	GR

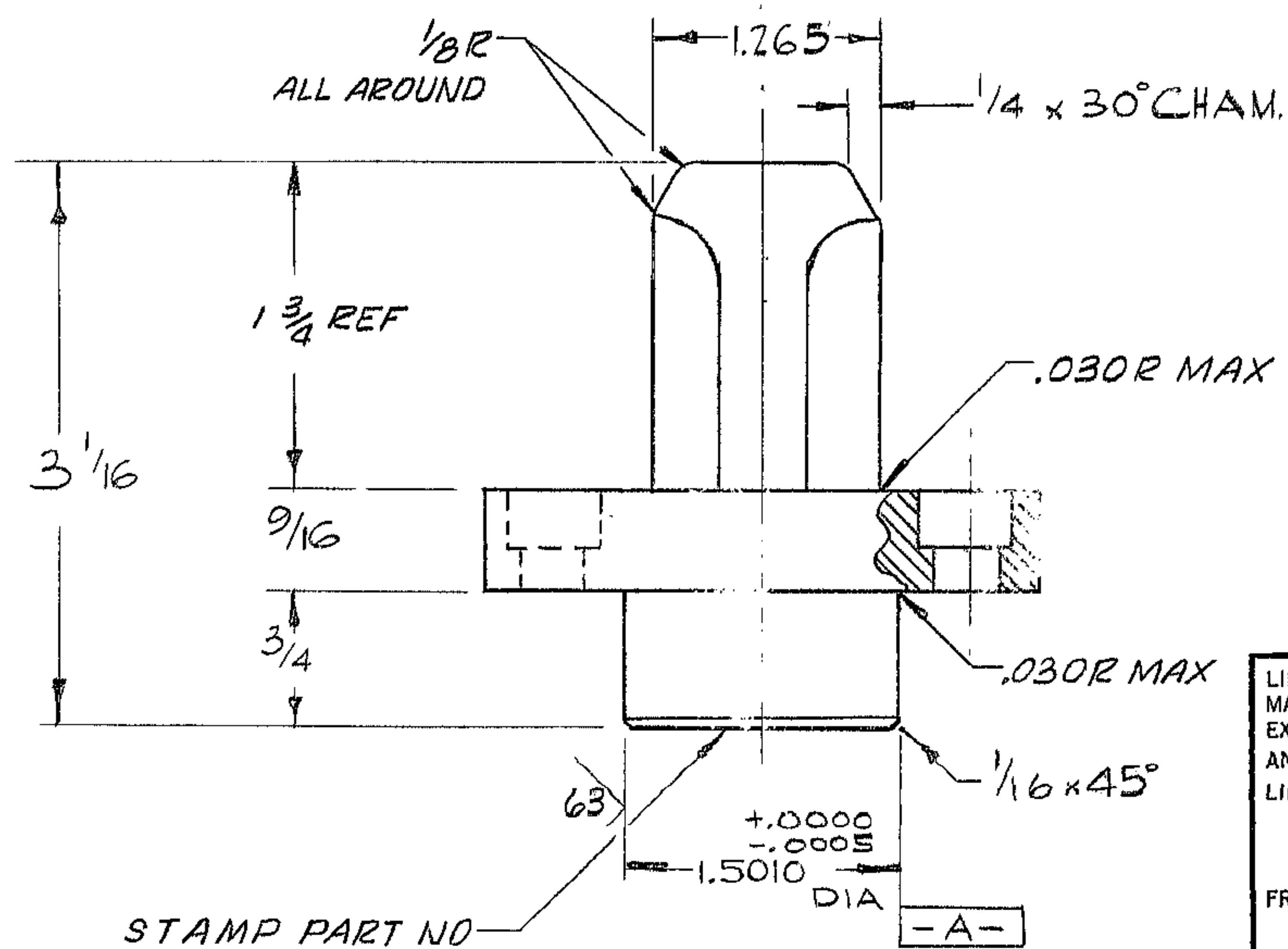


DRILL 1/32 DIA. THRU.
& C/BORE 1/2 DIA. x
5/16 DEEP. 4 HOLES
ON 2.250 B.C.D. EQ. SP.
AS SHOWN

WESTERN GEAR CORPORATION
CONSTRUCTION PROJECTS
DEPARTMENT
**APPROVED FOR
PROCUREMENT**
G.R. DATE 2/19/69

NOTE:

1. ALL DIAMETERS SHOWN CONCENTRIC TO -A- TO BE ⊙ A .005 TIR.
2. FINISH $\sqrt{125}$ ALL OVER EXCEPT AS NOTED.
3. ALL DIMENSIONS IN INCHES.
4. MATERIAL: STL 4340 -HT. TO 420 BHN BAR 3 DIA. x 3 5/16 LG.



STAMP PART NO
"2150.253B058"

NEXT ASSY: 2150.250 E002 (W.G.N 102 901)

LIMITS ON MACHINED DIMENSIONS EXCEPT AS NOTED ANGULAR ± 1° 0' LINEAR .X = ± .1 .XX = ± .03 .XXX = ± .010 FRACTIONAL ± 1/32 BREAK ALL SHARP EDGES	150" STELLAR TELESCOPE MOUNTING	Western GEAR CORPORATION HEAVY MACHINERY DIVISION EVERETT, WASHINGTON		
	DRAWN A. GREEN	PIN, LOCATING HORSESHOE ASSY.		
	CHECK <i>Jur. H.</i>	SIZE B	CODE IDENT NO. 16603	2150.250 B058
	ENGR	W.G.C 112 372	REV B	
	APPROVED	SCALE 1/1	WT.	LB SHEET OF