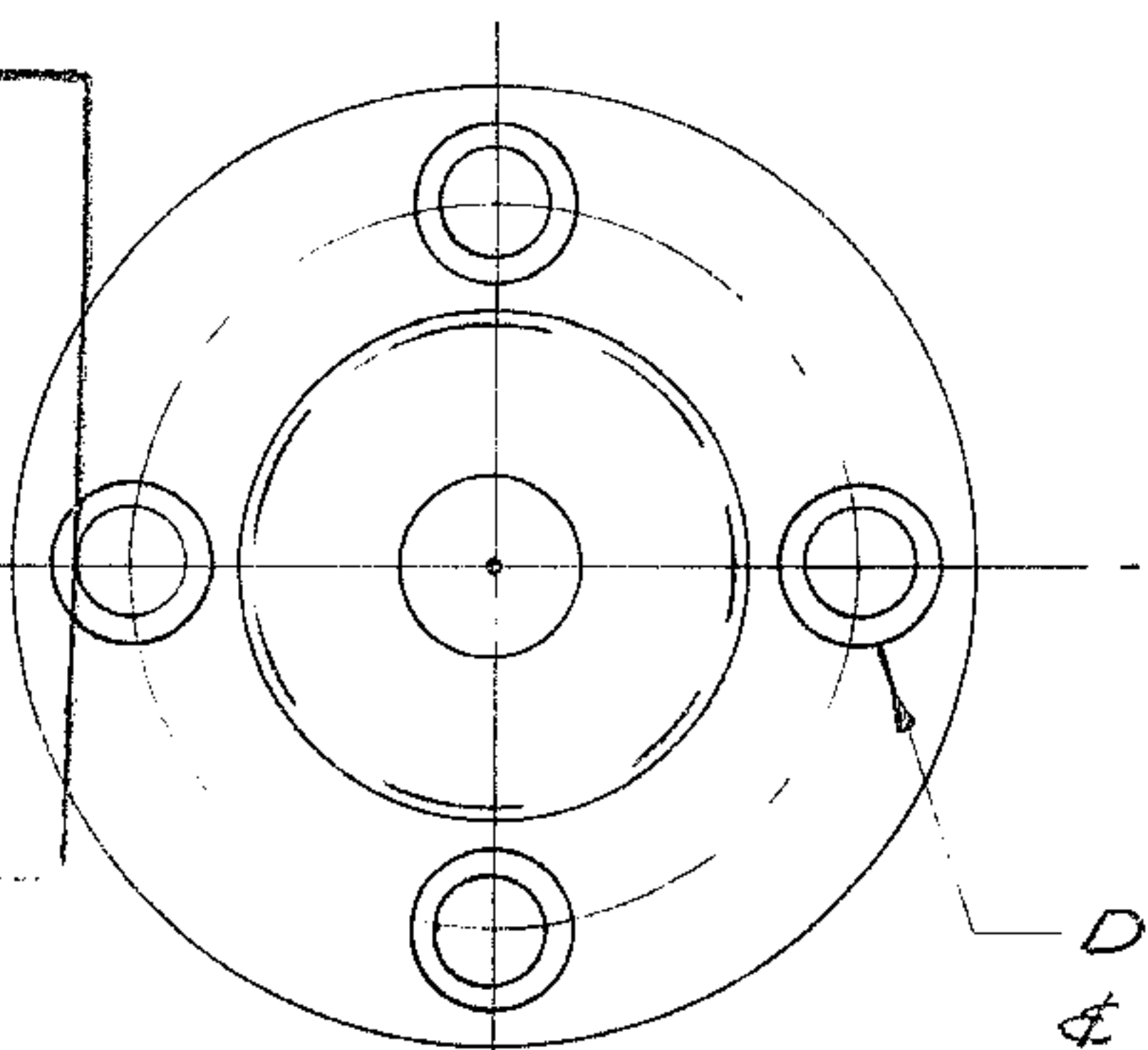


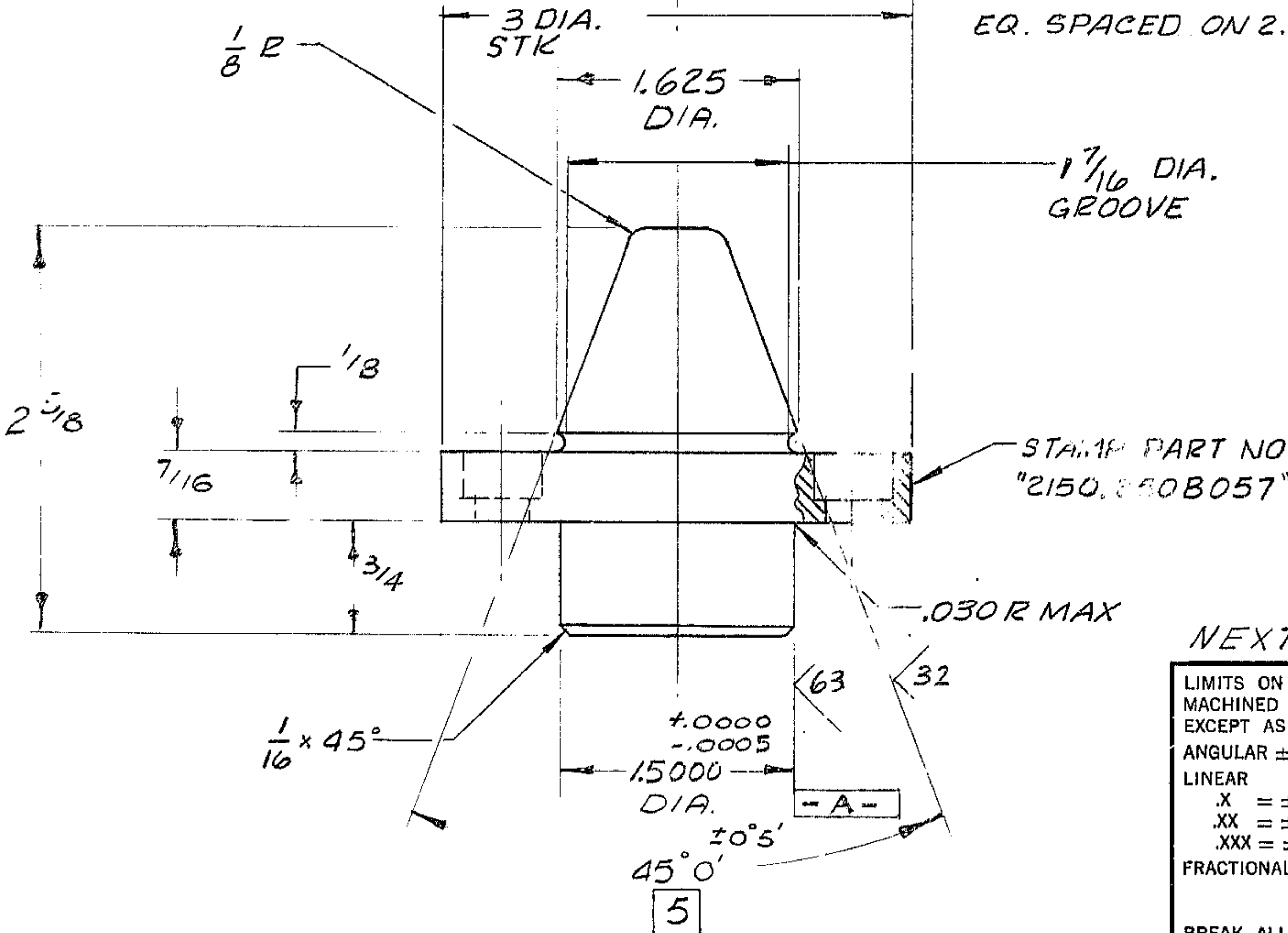
WESTERN GEAR CORPORATION
 CONSTRUCTION PROJECTS
 DEPARTMENT
 APPROVED FOR
 PROCUREMENT

GR

DATE 2/19/69



DRILL $\frac{1}{32}$ DIA. THRU
 & C/BORE $\frac{1}{2}$ DIA x
 $\frac{5}{16}$ DEEP. 4 HOLES
 EQ. SPACED ON 2.250 DIA B.C



NOTE:

1. ALL DIAMETERS SHOWN CONCENTRIC TO **-A-** TO BE $\text{◎} A .005 \text{ TIR}$
2. FINISH $\sqrt{\text{V}}$ ALL OVER EXCEPT AS NOTED
3. ALL DIMENSIONS ARE IN INCHES
4. MATERIAL: STL 4340 HT TO 420 BHN BAR 3 DIA x 3 LG
5. MATCH LAP, MARK & KEEP IN PAIRS THIS TAPE FOR 80% CONTACT AREA WITH TAPERED BUSHING, PART NO. 2150.253B007

REF. 1168

NEXT ASSY: 2150.250E002 (W.G.N 102901)

LIMITS ON MACHINED DIMENSIONS EXCEPT AS NOTED ANGULAR $\pm 1^\circ 0'$ LINEAR .X = $\pm .1$.XX = $\pm .03$.XXX = $\pm .010$ FRACTIONAL $\pm 1/32$ BREAK ALL SHARP EDGES	150" STELLAR TELESCOPE MOUNTING	WESTERN GEAR CORPORATION HEAVY MACHINERY DIVISION EVERETT, WASHINGTON	
	DRAWN A. GREEN. CHECK J.W.M. ENGR	PIN LOCATING, TAPERED HORSESHOE ASSY.	
W.G.C 112 321	SIZE B	CODE IDENT NO. 16603	REV B
APPROVED	SCALE 1/1	WT.	LB SHEET 1 OF 1