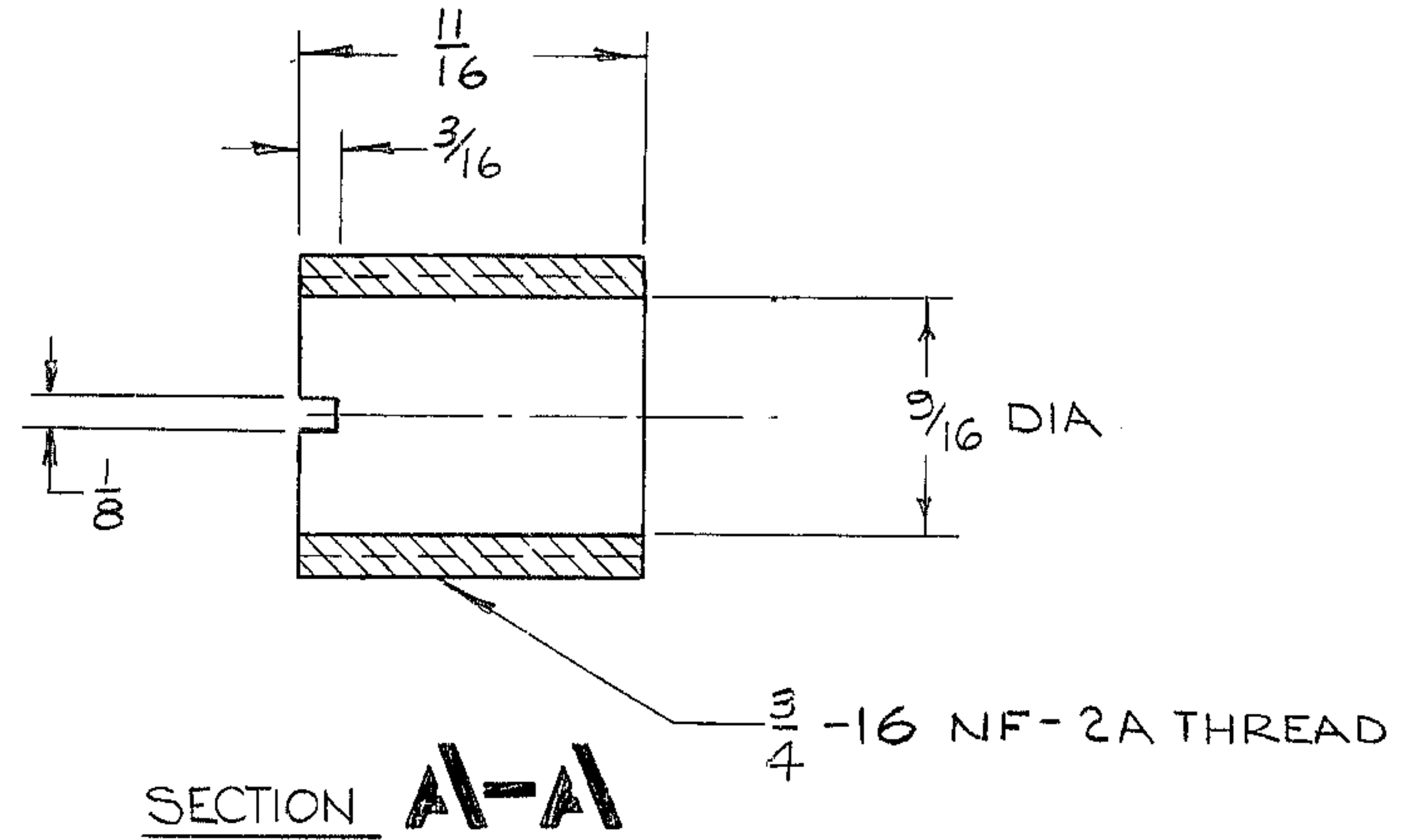
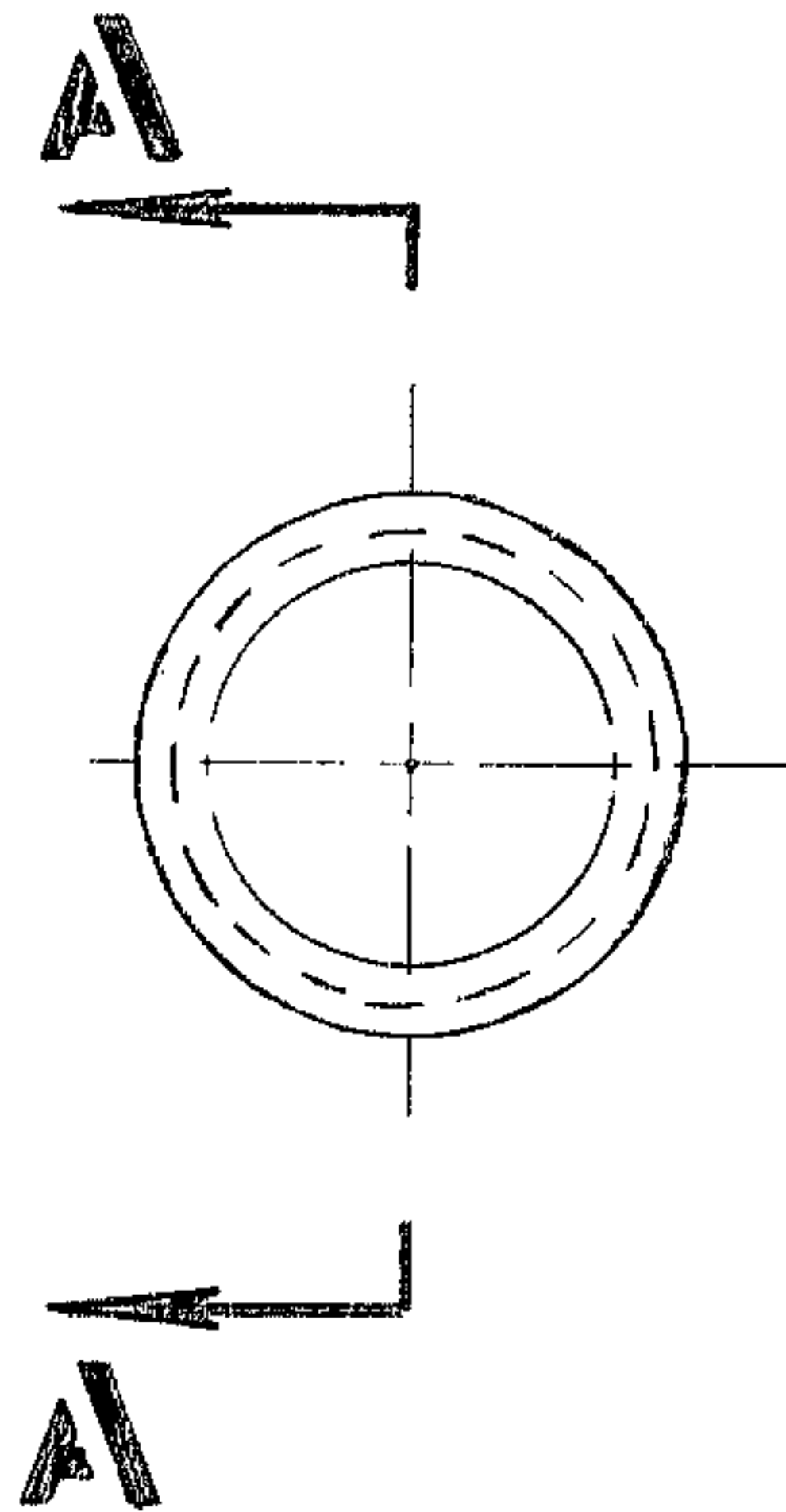


WESTERN GEAR CORPORATION
 CONSTRUCTION PROJECTS
 DEPARTMENT
 APPROVED FOR
 PROCUREMENT

G.R. DATE 2/19/69



NOTE

1. ALL DIMENSIONS IN INCHES
2. FINISH UNLESS NOTED TO BE $\sqrt{125}$
3. MAT'L: STL, AISI C1018 OR EQ
4. TAG PART NO. "2150.250B053"

REF. FILE 1168

NEXT ASSY: 2150.250E.002 (W.G.N 102 901)

LIMITS ON MACHINED DIMENSIONS EXCEPT AS NOTED ANGULAR $\pm 1^\circ 0'$ LINEAR .X = $\pm .1$.XX = $\pm .03$.XXX = $\pm .010$ FRACTIONAL $\pm 1/32$ BREAK ALL SHARP EDGES	150 IN STELLAR TELESCOPE MTG	Western GEAR CORPORATION HEAVY MACHINERY DIVISION EVERETT, WASHINGTON	
	DRAWN L.GOLD	SPACER, THREADED HORSESHOE ASSY	
	CHECK C.W.M.	W.G.C 112 327	SIZE B CODE IDENT NO. 16603 2150.250B053 SCALE NONE WT. .5 LB SHEET 1 OF 1
	ENGR	APPROVED	REV A