

5

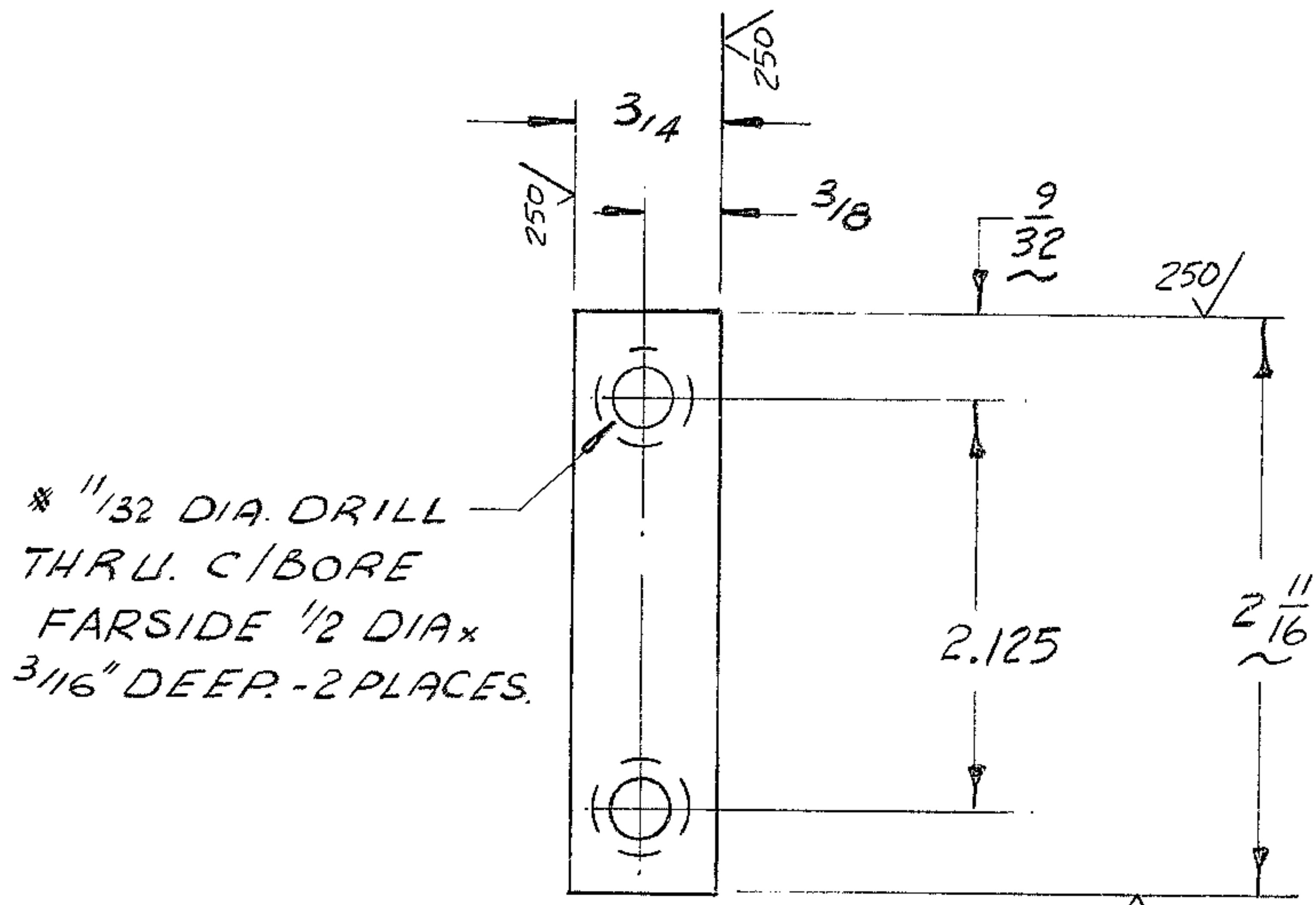
4

3

2

1

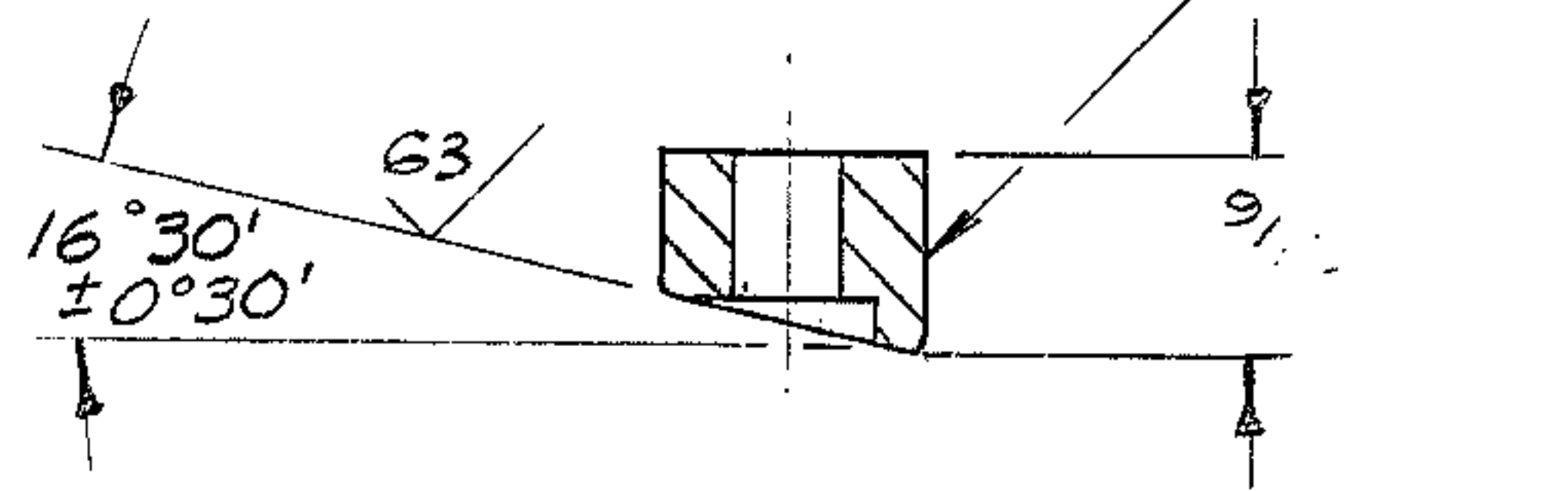
REVISIONS				
ZONE	LTR	DESCRIPTION	DATE	APPROVED
	A	REL PER AURA	2/17/69	GR
B-1	B	STL WAS 4140 & HT WAS 400 BHN	2/12/69	FG



- NOTE:**
1. FINISH $\sqrt{125}$ ALL OVER EXCEPT AS NOTED.
 2. ALL DIMENSIONS IN INCHES
 3. STAMPPART NO. "2150.250B051"
 4. MATERIAL: STL, 4340 HT TO 420 BHN

WESTERN GEAR CORPORATION
 CONSTRUCTION PROJECTS
 DEPARTMENT
 APPROVED FOR
 PROCUREMENT

DATE 2/19/69



1168

NEXT ASSY: 2150.250E002 (U.G.N 102 901)

LIMITS ON MACHINED DIMENSIONS EXCEPT AS NOTED ANGULAR ± 1° 0' LINEAR .X = ± .1 .XX = ± .03 .XXX = ± .010 FRACTIONAL ± 1/32 BREAK ALL SHARP EDGES	150" STELLAR TELESCOPE MOUNTING		Western GEAR CORPORATION HEAVY MACHINERY DIVISION EVERETT, WASHINGTON	
	DRAWN A. GREEN		LATCH, CAM HORSESHOE ASSY.	
	CHECK GENE RUSSO 13 APR 68			
	ENGR		SIZE B	CODE IDENT NO. 16603
W.G.C 112 330		SCALE 1/1	WT.	LB SHEET 1 OF 1