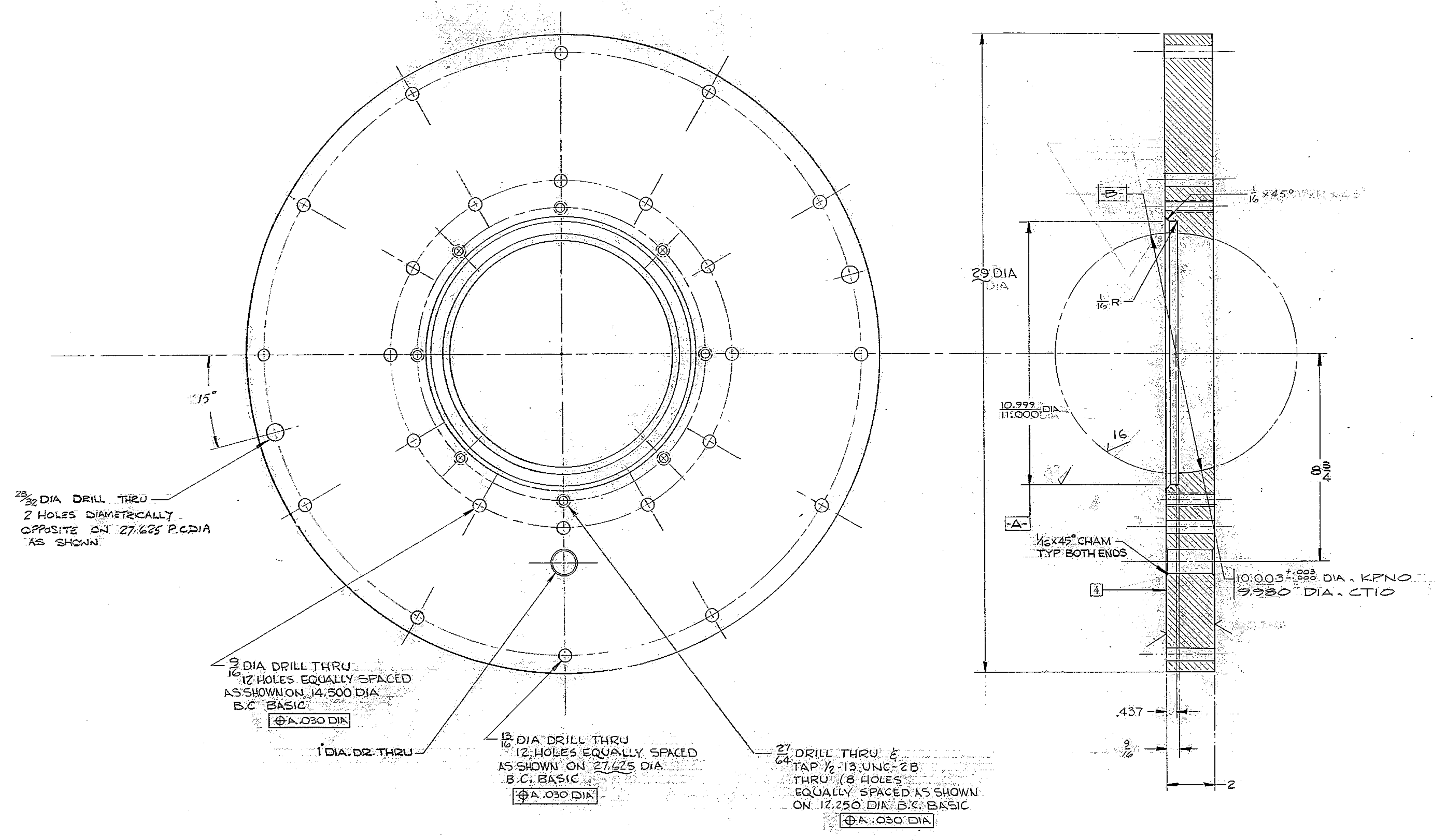


REVISIONS			
ZONE	LTR	DESCRIPTION	DATE
2E	A	(NOTE 2) 10.003 WAS 10.000 PART NO WAS 2150.240009	2/7/68
3D	A	10.003 $\pm .003$ DIA WAS 10.000 DIA	
3D	A	$\frac{3}{32}$ DIA HOLES ADDED	
4C	A	TO CLEAN DELETED $\frac{3}{16}$ ADDED	
3A	A	MATE WAS ASTM A7 29245 X 2	
3A/6	B	ADDED 1 DIA HOLE	7-2-71 JLV
D3	C	ADDED AS-BUILT DIMS. FOR CTIO.	14 DEC 71



- NOTES:
- ALL DIMENSIONS IN INCHES
  - DIA  $\frac{1}{16}$  TO BE CONCENTRIC TO 10.003 DIA PART NO. (2150.240009) WITHIN .005 TIR
  - ALL SURFACES MARKED  $\checkmark$  TO BE  $\checkmark$  EXCEPT AS NOTED
  - STAMP PART NO. 2150.240E008 APPROX WHERE SHOWN.

$\frac{3}{32}$  DIA DRILL THRU  
2 HOLES DIAMETRICALLY  
OPPOSITE ON 27.625 P.C. DIA  
AS SHOWN

$\frac{3}{16}$  DIA DRILL THRU  
12 HOLES EQUALLY SPACED  
AS SHOWN ON 14.500 DIA  
B.C. BASIC  
 $\Phi$  .030 DIA

$\frac{15}{16}$  DIA DRILL THRU  
12 HOLES EQUALLY SPACED  
AS SHOWN ON 27.625 DIA  
B.C. BASIC  
 $\Phi$  .030 DIA

$\frac{27}{64}$  DRILL THRU &  
TAP  $\frac{1}{2}$ -13 UNC-2B  
THRU (8 HOLES  
EQUALLY SPACED AS SHOWN  
ON 12.250 DIA B.C. BASIC  
 $\Phi$  .030 DIA

WESTERN GEAR CORPORATION  
CONSTRUCTION PROJECTS  
DEPARTMENT  
APPROVED FOR  
PROCUREMENT  
G.R. DATE SEP 11 1968

NEXT ASSY: 2150.240E.002 (W.G.N 102 993)

FIG. NO.	PART NO.	DESCRIPTION	QTY	MATERIAL	CODE IDENT
LIST OF MATERIAL (LM)					
LIMITS ON MACHINED DIMENSIONS EXCEPT AS NOTED					
ANGULAR = $\pm 1^\circ 0'$					
LINEAR:					
X = $\pm .1$	XXX = $\pm .010$				
XX = $\pm .03$	FRACTIONAL = $\pm 1/32$				
BREAK ALL SHARP EDGES					
MATERIAL					
STEEL ASTM A-36					
29 DIA x 2 $\frac{1}{2}$					
OR EQUIV.					
APPROVED		WGN 102976		SIZE CODE/IDENT NO.	
				E 16603	
				2150.240E008	
				SCALE 1/2 WT LB SHEET 1 OF 1	

REF 1167

WESTERN GEAR CORPORATION  
HEAVY MACHINERY DIVISION  
EVERETT, WASHINGTON

15014 STELLAR  
TELESCOPE MOUNTING  
DRAWN BY RANGER 3/16/68  
CHECKED BY J. W. S. 3-29-68  
ENGR

PLATE, ADAPTER  
CASSEGRAIN RAMP ASSEMBLY