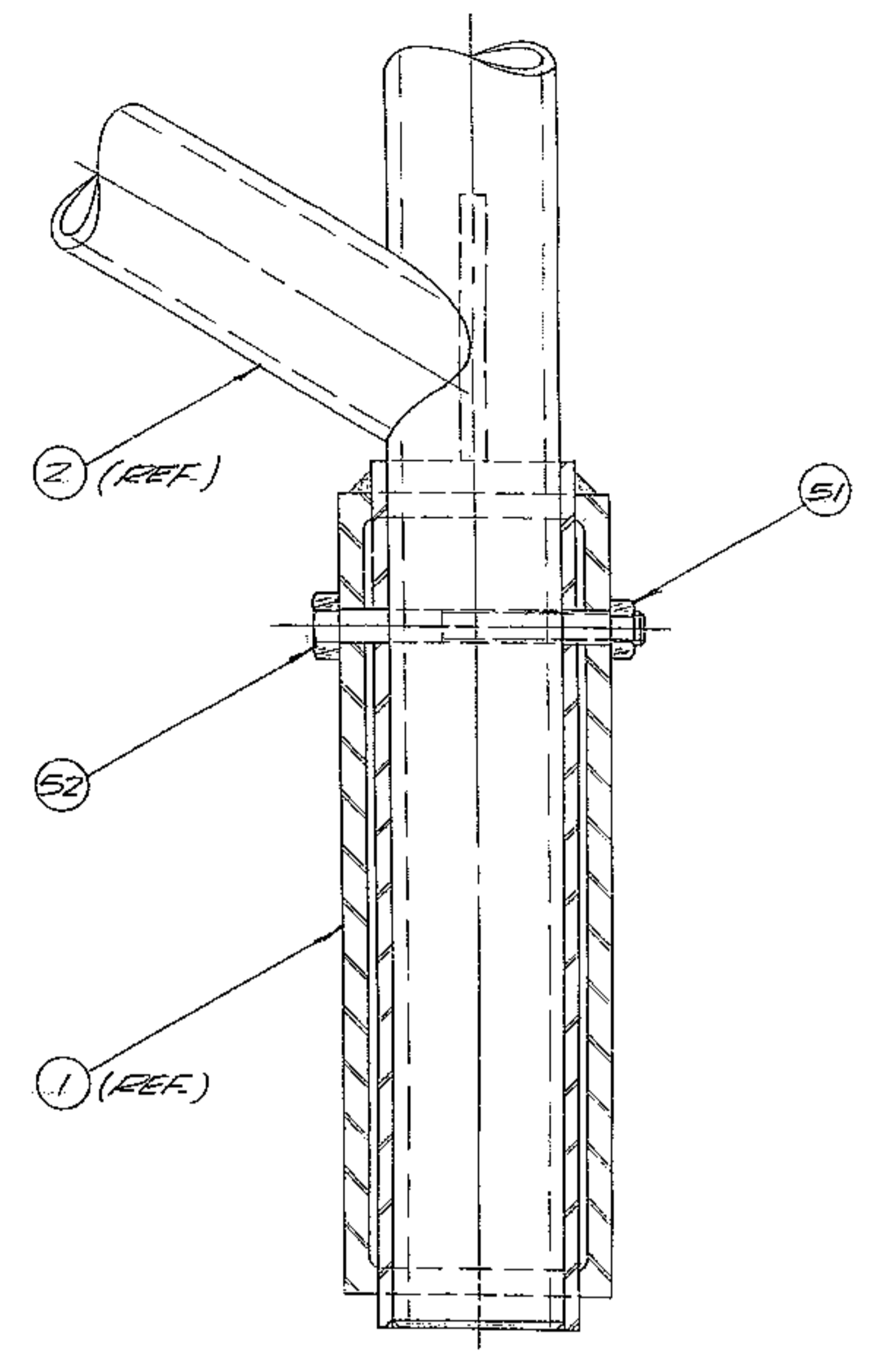
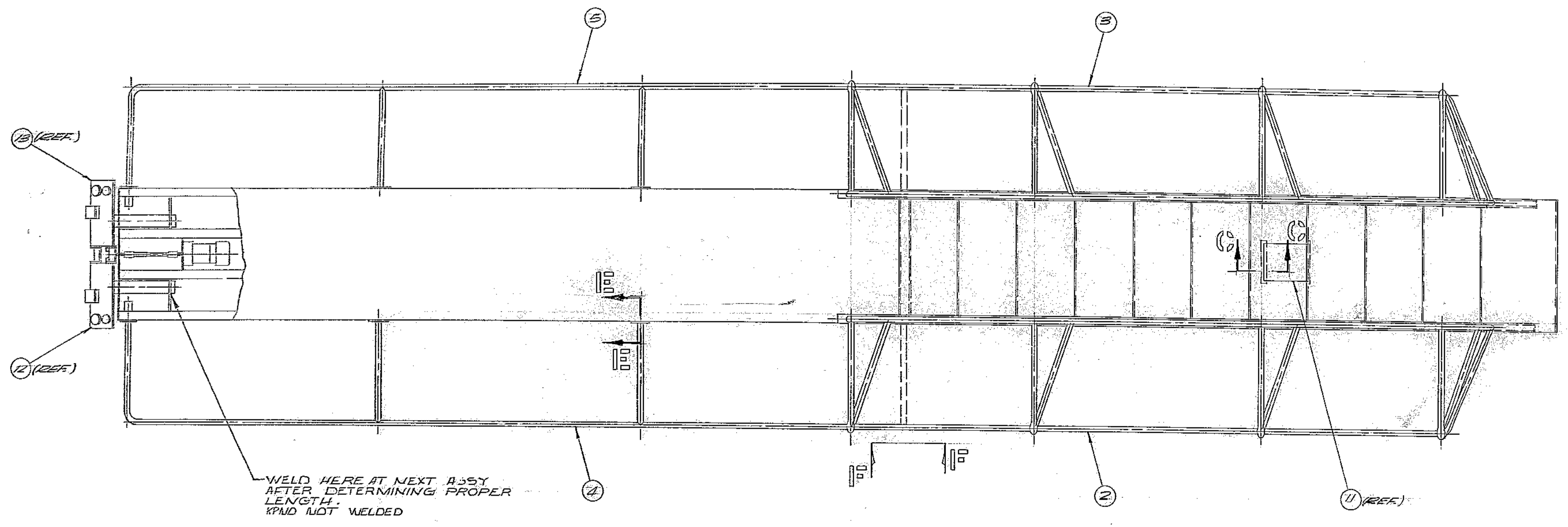
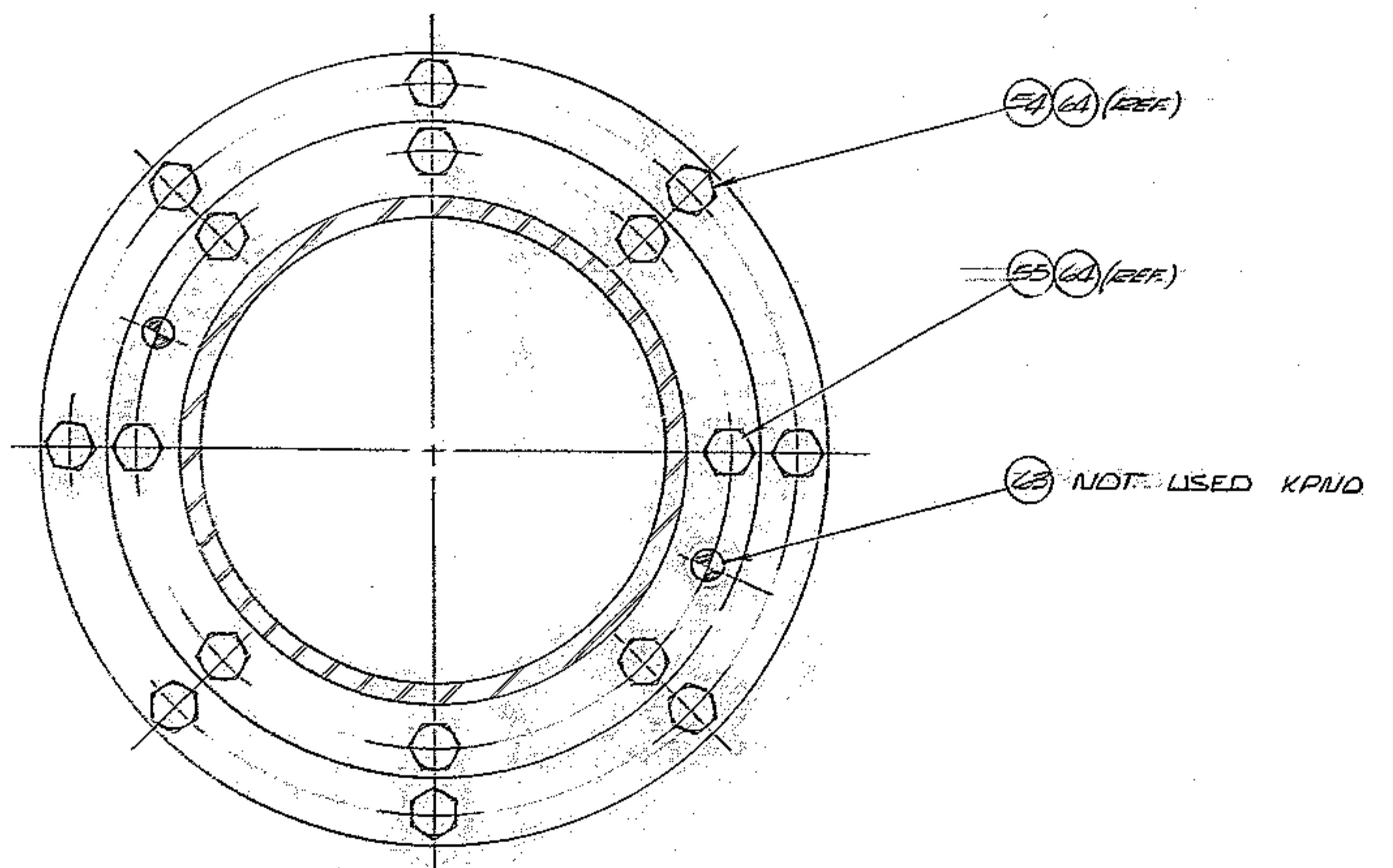


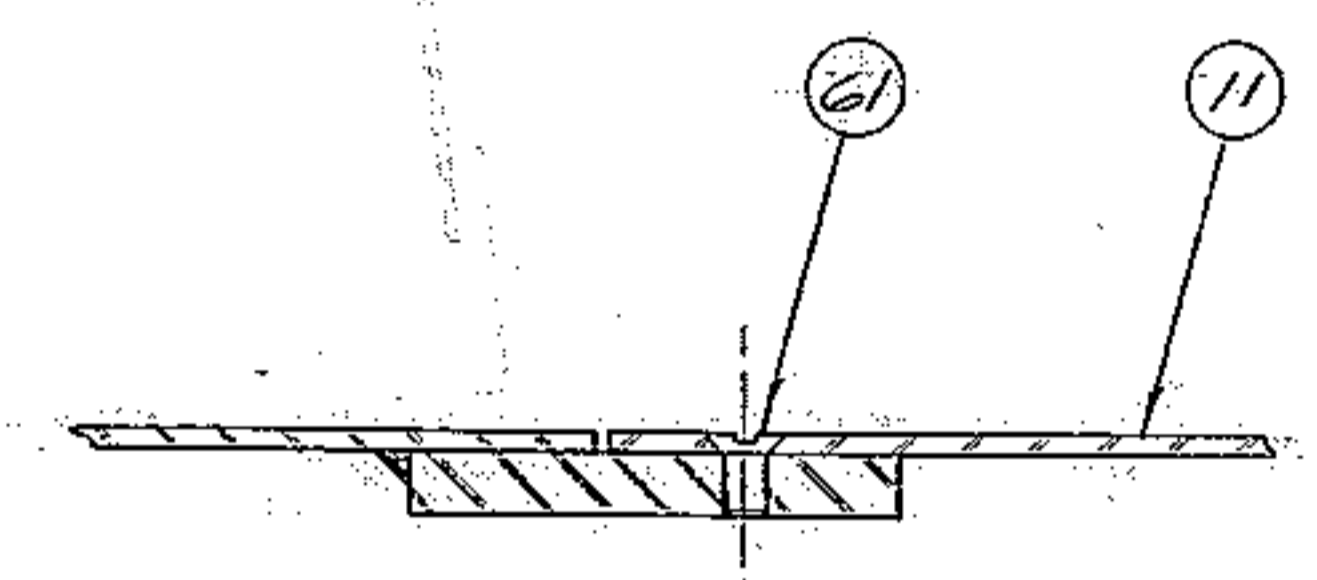
REVISIONS				
ZONE	LTR	DESCRIPTION	DATE	APPROVED
4c	A	TOP RAIL WAS STRAIGHT.	9/17/68	
	B	SEE SHEET 2 OF 2	11/19/68	
	C	SEE SHT 2		
	D	ADDED NOT USED # NOT WELD KPND 9/11/68		GD



SECTION D-D  
SCALE: FULL

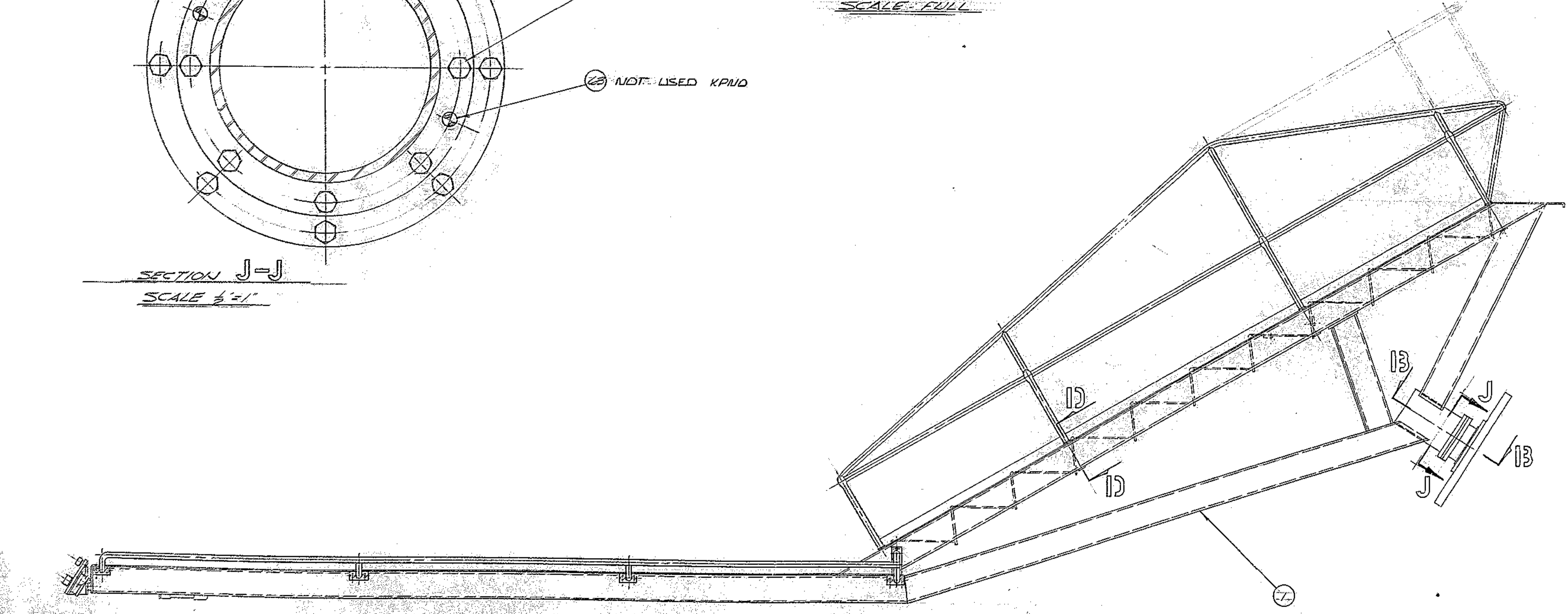


SECTION J-J  
SCALE 1/2"=1"



SECTION C-C  
SCALE: FULL

- NOTES:
1. DRY LUBE SPHERICAL SURFACES SHOWN @ ASS'Y WITH MOLYKOTE OR EQUIVALENT
  2. MACHINE LIP OF TWO RETAINERS SHOWN @ ASS'Y FOR .002 TOTAL END PLAY.
  3. PLUG END OF FOLLOWER SHOWN @ ASS'Y.
  4. MACHINE AT ASSY TO CENTER GEAR.
  5. GREASE PACK BEARINGS AND GEARS.



WESTERN GEAR CORPORATION  
CONSTRUCTION PROJECTS  
DEPARTMENT  
APPROVED FOR  
PROCUREMENT

FIND NO.	PART NO.	DESCRIPTION	QTY	MATERIAL	CODE IDENT
NEXT ASS'Y: 2150.201 E002 (W.G.N 102 907)					
LIST OF MATERIAL (LM)					
LIMITS ON MACHINED DIMENSIONS EXCEPT AS NOTED		150 IN. STELLAR TELESCOPE MTG.			
ANGULAR = ± 1' 0"		WESTERN GEAR CORPORATION HEAVY MACHINERY DIVISION EVERETT, WASHINGTON			
LINEAR: X = ± .1 XXX = ± .010		DRAWN EQUITIES BTR/68			
XX = ± .03 FRACTIONAL = ± 1/32		CHECK			
BREAK ALL SHARP EDGES		ENGR			
MATERIAL		CASSEGRAIN RAMP ASSEMBLY			
APPROVED		K19.N 102,993		SIZE	CODE IDENT NO.
		E 16603		2150.200 E002	REV
		SCALE: 1/2"		WT	LB SHEET 1 OF 2