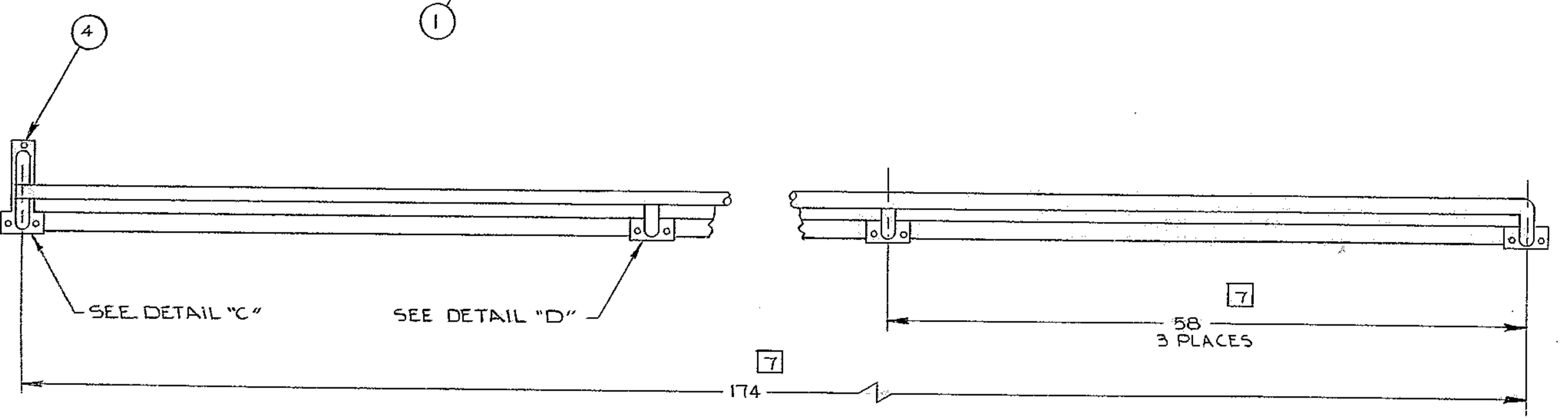
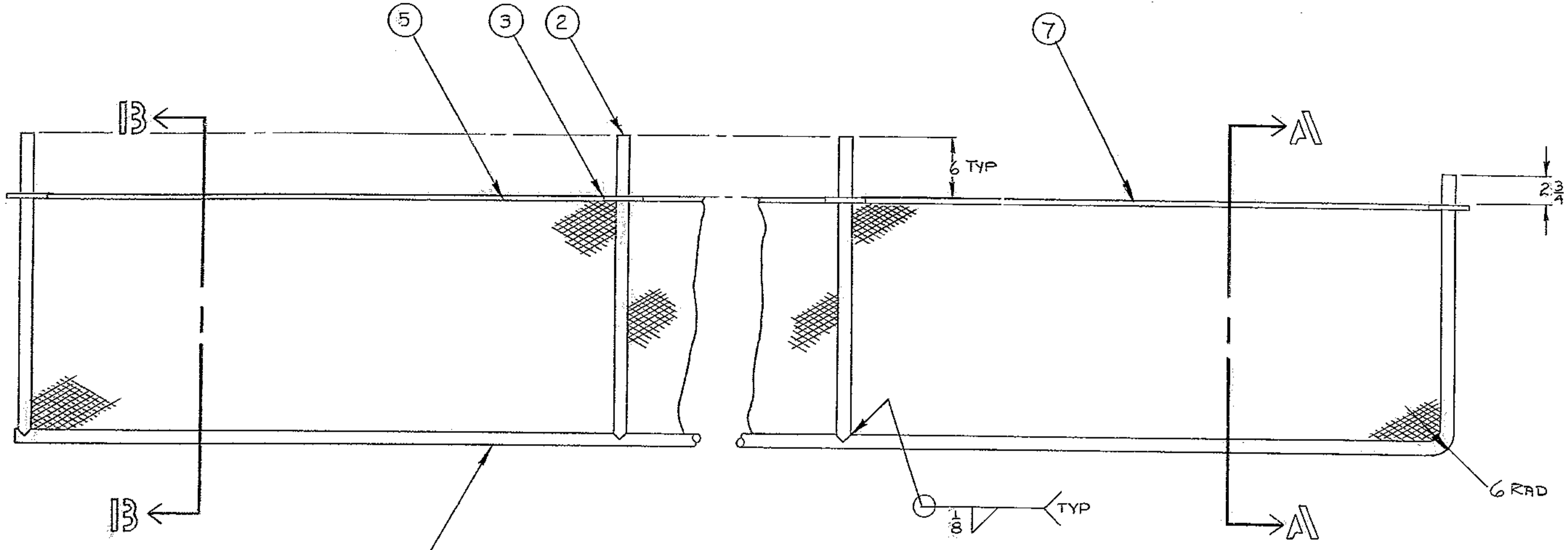


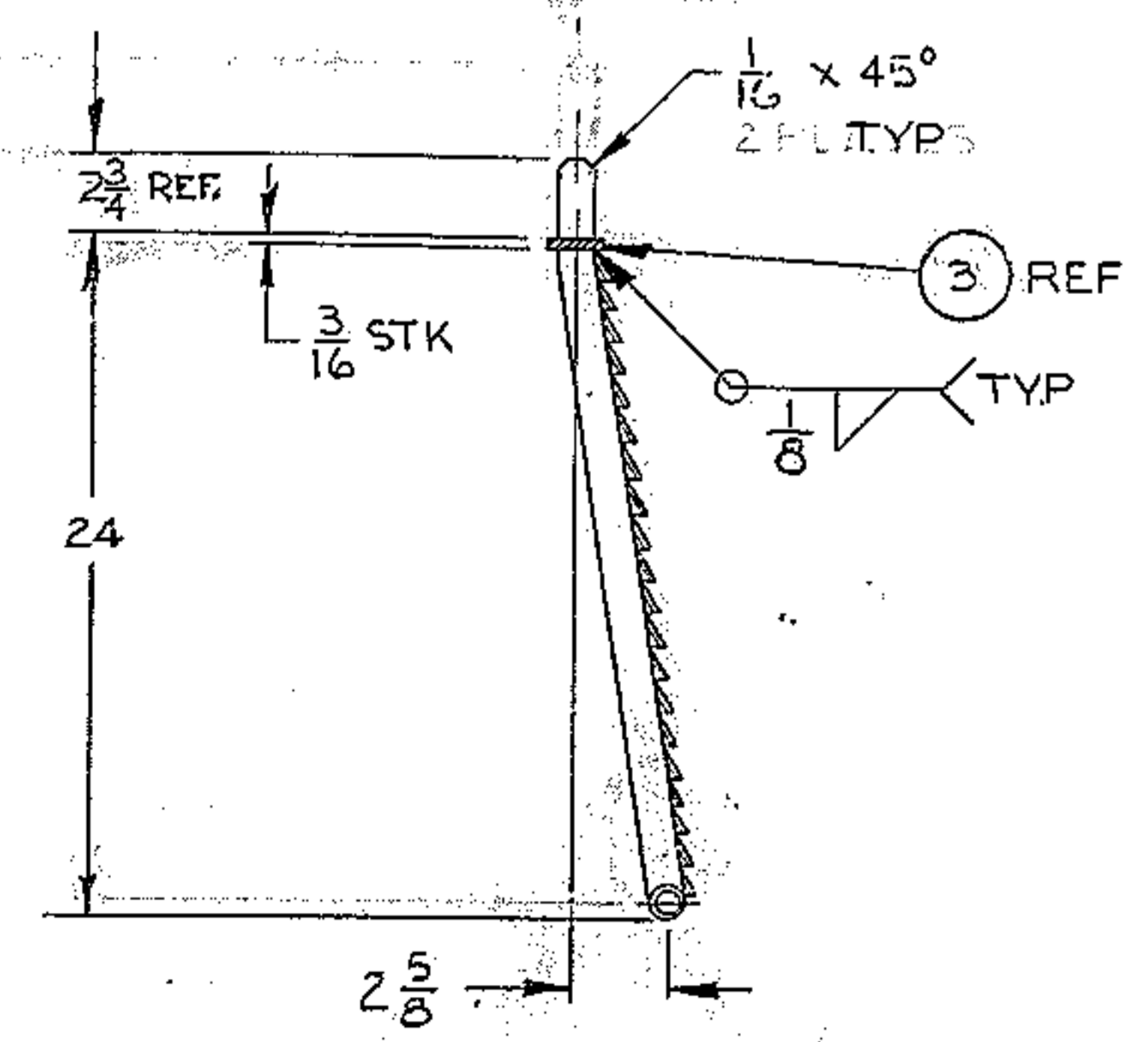
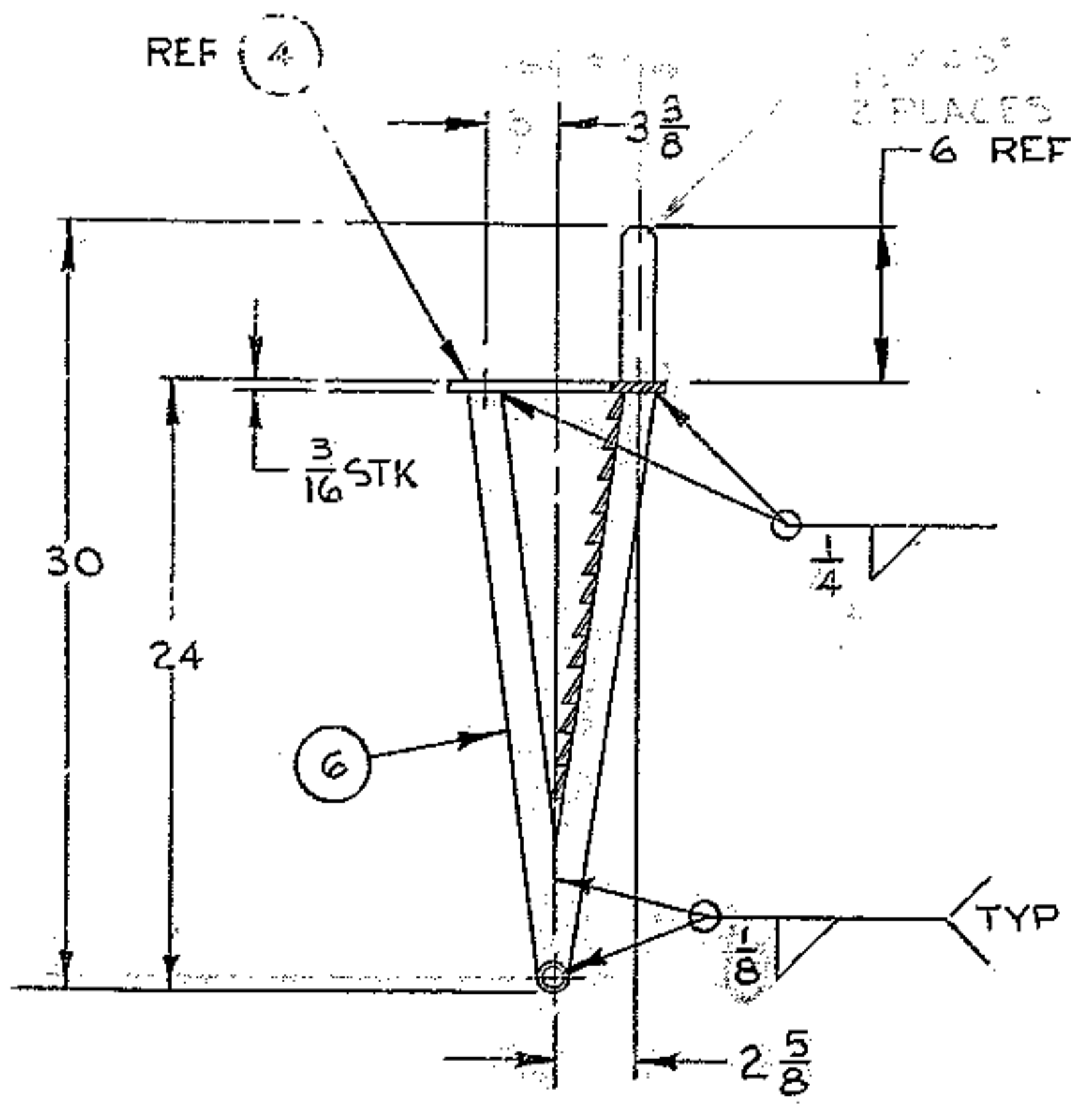
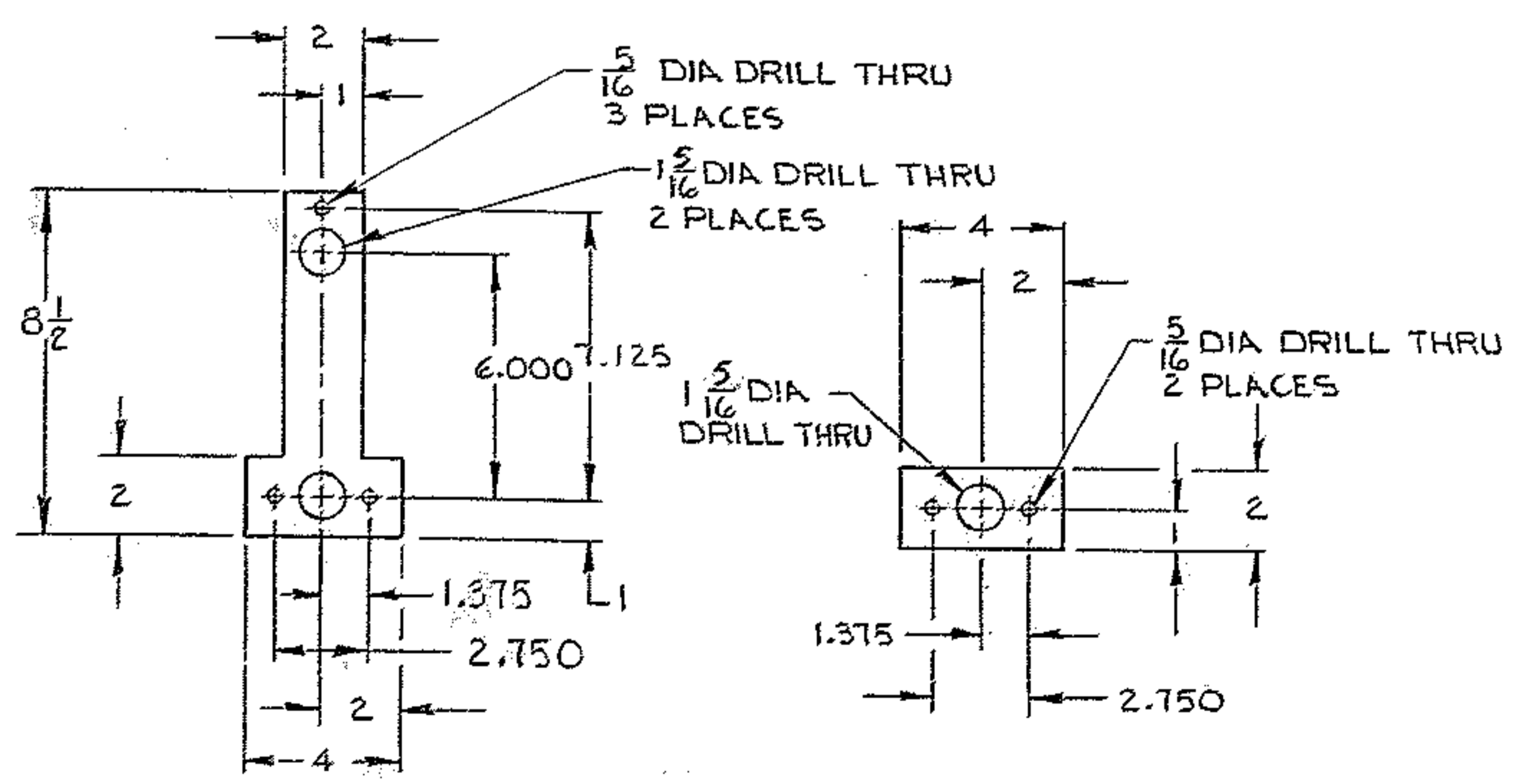
REVISIONS				
ZONE	LTR	DESCRIPTION	DATE	APPROVED
M/L	A	(PC#1) x 200 ADDED APPROX 201 DELETED	9/17/68	
	A	VARIOUS WELDING SYMBOLS CHANGED		
7A	A	1 5/16 DIA x 1 9/16 (2 PLACES)		
4C	A	6 RAD ADDED		
4A	A	TYP 3 PLACES ADDED		
3B	A	(NOTE 6) PART NO WAS 2150.240D004.		
3C	B	P/N 5 QTY: 15:1 WAS: A/R ADDED; SIZE	11/1/68	
C2	C	ADDED P/N 7	9/21/70	
C2	D	P/N 5 WAS 1/2-20 FLTND	7/15/71	



MATERIAL LIST				
PC.NO.	QTY	DESCRIPTION	MATL & SPEC	ROUGH WT.
1	1	TUBE 1/4 O.D x .120 WALL x 200	STL AISI-MT-1015 CUT TO SUIT	24
2	3	TUBE 1/4 O.D x .120 WALL x 29 3/4	STL AISI-MT-1015	3.5
3	3	R 2 x 3/16 x 4	STL ASTM A7	.4
4	1	R 4 x 3/16 x 8 1/2	STL ASTM A7	1.8
5	A/R	EXPT MFL 24 3/16 x 7 1/4	STL CARBON 1 1/2 #9	12
6	1	TUBE 1/4 O.D x .120 WALL x 23 3/4	STL AISI-MT-1015	3
7	3	R 3/16 x 1 1/2 x 54	STL-ASTM A-36	

WESTERN GEAR CORPORATION  
 CONSTRUCTION PROJECTS  
 DEPARTMENT  
 APPROVED FOR  
 PROCUREMENT  
 G.E. DATE SEP 1968

- NOTES:
- 1 ALL DIMENSIONS ARE IN INCHES.
  - 2 FABRICATION TOLERANCE  
 UP TO 10 INCHES ± 1/16  
 10 TO 50 INCHES ± 1/8  
 50 INCHES AND OVER ± 1/4
  - 3 WELD PER W.G.C. SPEC 752. APPENDIX T1
  - 4 STRESS RELIEVE AFTER WELDING PER W.G.C. SPEC 510.
  - 5 APPLY ONE (1) COAT PRIMER PAINT IMMEDIATELY AFTER STRESS RELIEVE AND CLEANING PER W.G.C. SPECS 511.
  - 6 TAG WITH PART NO. 2150.240D007.
  - 7 SPACING TO BE LOCATED FROM PART NO. 2150.240E003



DETAIL C  
SCALE: 1/4

DETAIL D  
SCALE: 1/4  
3 PLACES

SECTION B-B  
SCALE: 1/8

SECTION A-A  
SCALE: 1/8  
TYP 3 PLACES

NEXT ASSY: 2150.240E002 (W.G.N 102993)

FIND NO.	PART NO.	DESCRIPTION	QTY	MATERIAL	CODE IDENT
LIST OF MATERIAL (LM)					
LIMITS ON MACHINED DIMENSIONS EXCEPT AS NOTED		150 IN. STELLAR TELESCOPE MTG			
ANGULAR = ± 1° 0'		DRAWN R. ORR APR 68			
LINEAR: X' = ± .1 XXX = ± .010		CHECK R. NIEVES 5-31-68			
XX = ± .03 FRACTIONAL = ± 1/32		ENGR			
BREAK ALL SHARP EDGES		MATERIAL			
SEE MATL LIST		W.G.E 107649			
APPROVED		SIZE CODE IDENT NO.		REV	
		D 16603		2150.240D007 D	
SCALE 1/8 & NOTED		WT 53		LB SHEET 1 OF 1	

REF. FILE 1167

WESTERN GEAR CORPORATION  
 HEAVY MACHINERY DIVISION  
 EVERETT, WASHINGTON

CATCH RAIL, L/H  
 CASSEGRAIN RAMP ASSEMBLY