

4

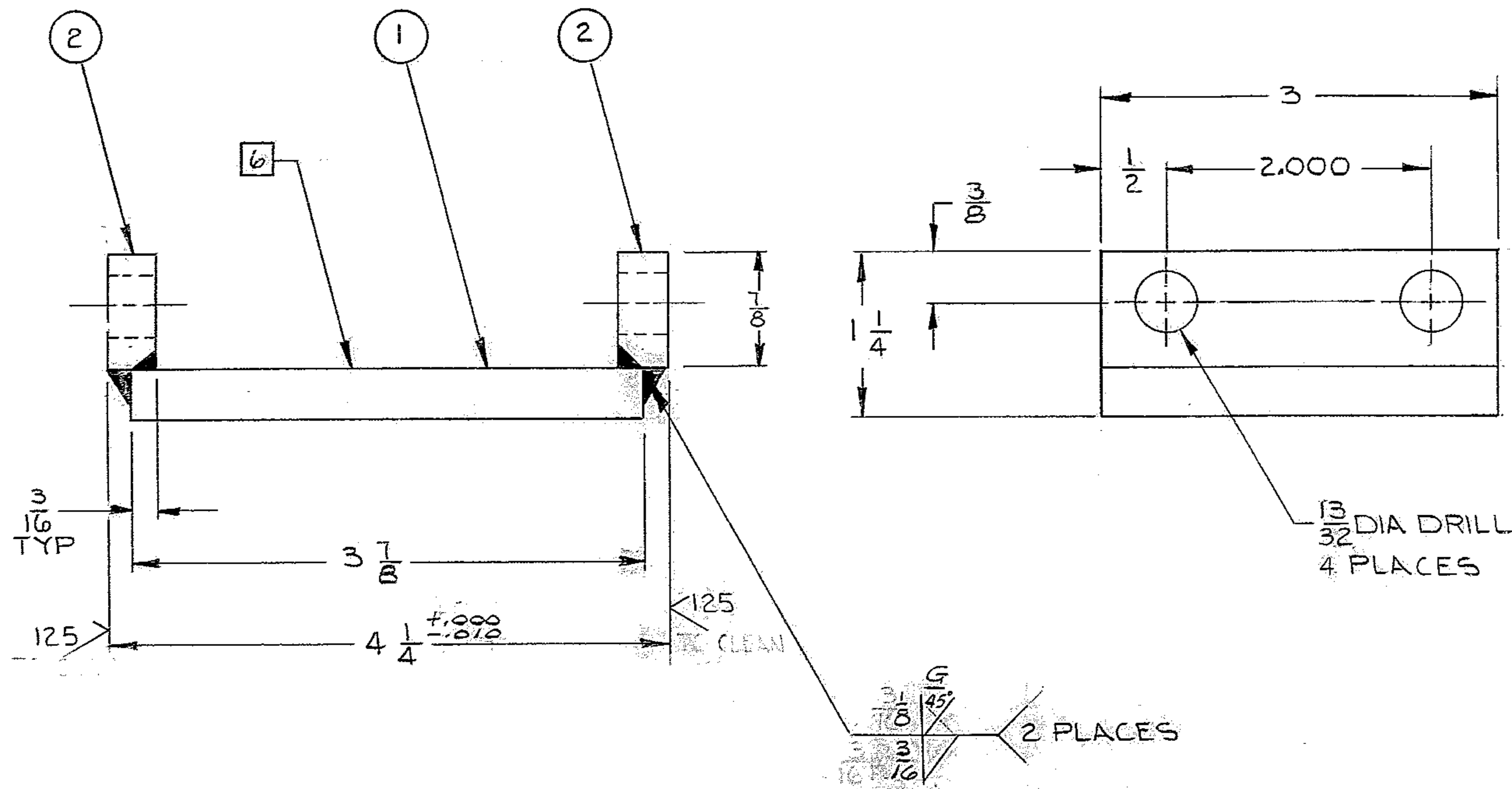
3



2

1

REVISIONS				
ZONE	LTR	DESCRIPTION	DATE	APPROVED
3c/4c	A	TO CLEAN DELETED FROM MICRO SYMBOL	9/17/68	
4c	A	4 1/4 ±.000 WAS 4 1/4 ±0.016		
3B	A	WELDING SYMBOL CHANGED.		
M/L	A	PC#2 WAS R 3 x 3/8 x 7/8		



MATERIAL LIST				
PC.NO.	QTY	DESCRIPTION	MATL & SPEC	ROUGH WT.
1	1	R 3 x 3/8 x 3/8	STL ASTM A36	
2	2	R 3 x 1/2 x 7/8	STL ASTM A36	

NOTES:  
 1 DIMENSIONS ARE IN INCHES.  
 2 FABRICATION TOLERANCE UP TO 10 INCHES ± 1/16.  
 3 WELD PER W.G.C. SPEC 752, APPENDIX T1  
 4 STRESS RELIEVE AFTER WELDING AND BEFORE MACHINING PER W.G.C. SPEC 510.  
 5 APPLY ONE (1) COAT PRIMER PAINT ALL OVER IMMEDIATELY AFTER STRESS RELIEVING AND CLEANING PER W.G.C. SPEC 511.  
 6 STAMP PART NO. 2150.240C 019

NEXT ASSY: 2150.240E002 (W.G.N 102993)

REF. FILE 1167

WESTERN GEAR CORPORATION  
 CONSTRUCTION PROJECTS  
 DEPARTMENT  
 APPROVED FOR  
 PROCUREMENT  
 GR DATE SEP 18 1968

FIND NO.	PART NO.	DESCRIPTION	QTY	MATERIAL	CODE IDENT
LIST OF MATERIAL (LM)					
LIMITS ON MACHINED DIMENSIONS EXCEPT AS NOTED ANGULAR = ± 1° 0' LINEAR: .X = ± .1    .XXX = ± .010 .XX = ± .03    FRACTIONAL = ± 1/32		150 IN. STELLAR TELESCOPE MTG		WESTERN GEAR CORPORATION HEAVY MACHINERY DIVISION EVERETT, WASHINGTON	
DRAWN R. ORR APR 68 CHECK R. NIEVES 5-31-68 ENGR		BRACKET, CONNECTING CASSEGRAIN RAMP ASSY			
MATERIAL SEE MATL LIST		W.G.D107494		SIZE C 16603	CODE IDENT NO. 2150.240C019
APPROVED		SCALE 1/1		WT	REV A
		LB		SHEET 1 OF 1	