

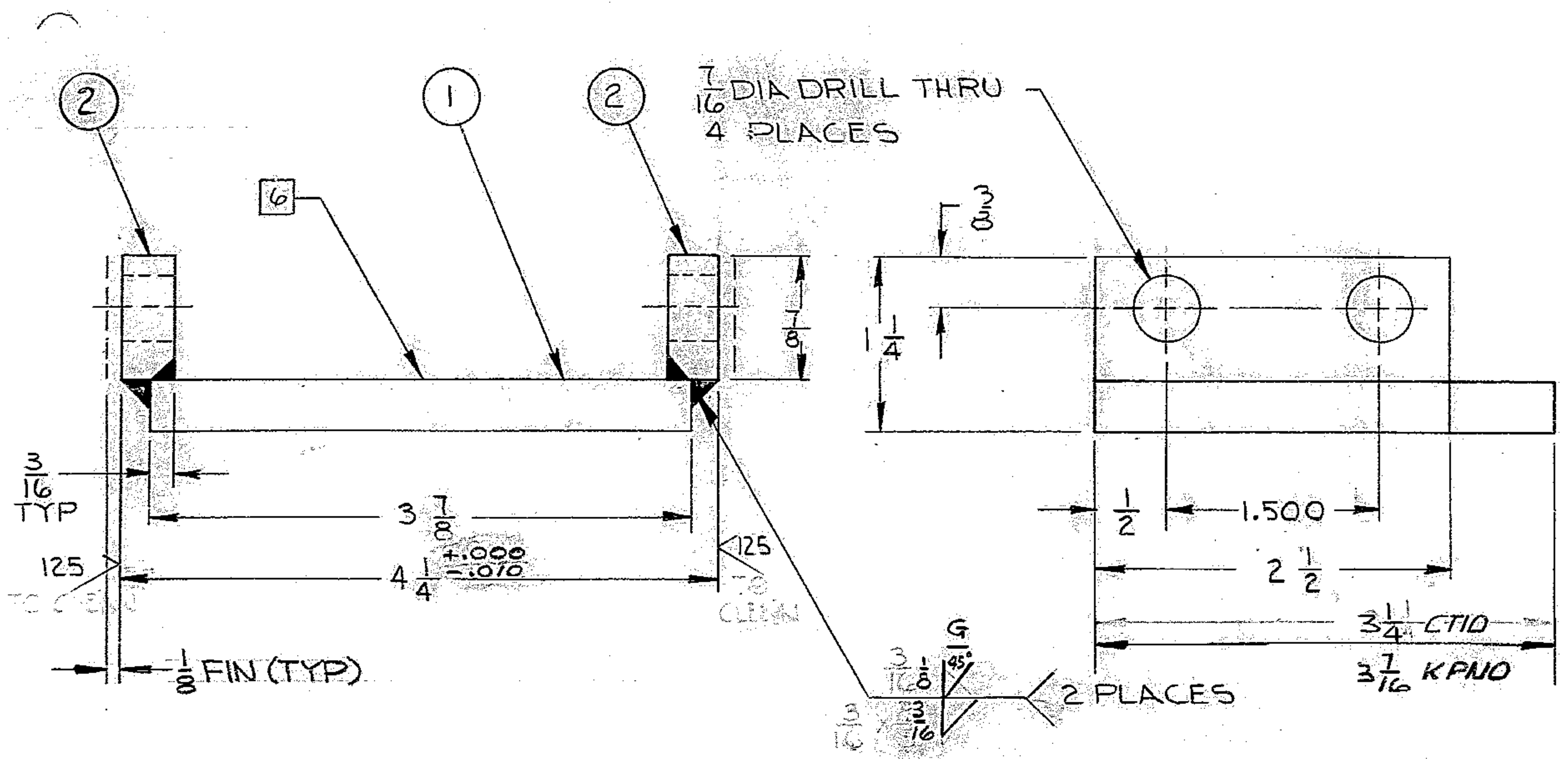
4

3

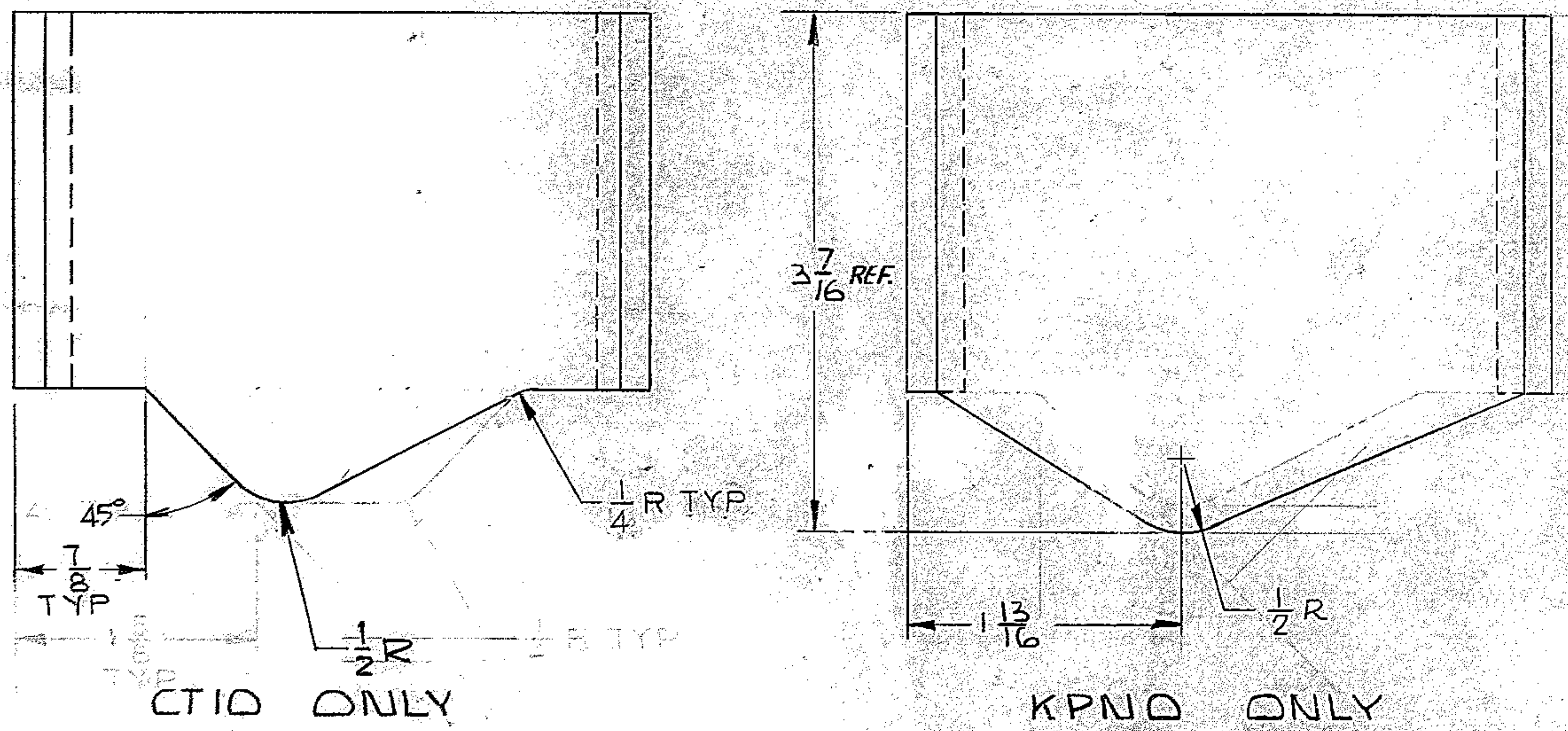
2

1

REVISIONS				
ZONE	LTR	DESCRIPTION	DATE	APPROVED
3C/4C	A	TO CLEAN DELETED FROM MICRO SYMBOL	9/17/68	
4C	A	4 1/4 ±.000 WAS 4 1/4 ±.016		
3C	A	WELDING SYMBOL CHANGED		
M/L	A	PC#2 WAS R 2 1/2 x 3/8 x 7/8		
B4	B	CONFIGURATION OF CAM RZ CHANGED	7-2-71	JW
	C	ADDED KPND ONLY VIEW & DIMS	4/11/73	LDE



MATERIAL LIST				
PC.NO.	QTY	DESCRIPTION	MATL & SPEC	ROUGH WT
1	1	R 3 1/4 x 3/8 x 3 7/8	STL ASTM A36	
2	2	R 2 1/2 x 1/2 x 7/8	STL ASTM A36	



- NOTES
- 1 ALL DIMENSIONS ARE IN INCHES.
 - 2 FABRICATION TOLERANCE UP TO 10 INCHES ± 1/16
 - 3 WELD PER W.G.C. SPEC 752, APPENDIX T1.
 - 4 STRESS RELIEVE AFTER WELDING AND BEFORE MACHINING PER W.G.C. SPEC 510.
 - 5 APPLY ONE (1) COAT PRIMER PAINT ALL OVER IMMEDIATELY AFTER STRESS RELIEVING AND CLEANING PER W.G.C. SPEC 511.
 - 6 STAMP PART NO. 2150.240C018

REF. FILE 1167

NEXT ASSY: 2150.240E002 (W.G.N 102993)

WESTERN GEAR CORPORATION
 CONSTRUCTION PROJECTS
 DEPARTMENT
 APPROVED FOR
 PROCUREMENT
 GR DATE SEP 18 1968

FIND NO.	PART NO.	DESCRIPTION	QTY	MATERIAL	CODE IDENT
LIST OF MATERIAL (LM)					
LIMITS ON MACHINED DIMENSIONS EXCEPT AS NOTED		150 IN. STELLAR TELESCOPE MTG		WESTERN GEAR CORPORATION HEAVY MACHINERY DIVISION EVERETT, WASHINGTON	
ANGULAR = ± 1° 0'		DRAWN R. ORR APR 68		BRACKET, CONNECTING LIMIT SWITCH ACTIVATOR CASSEGRAIN RAMP ASSEMBLY	
LINEAR:		CHECK R. NIEVES 5-31-68			
X = ± .1 XXX = ± .010		ENGR			
XX = ± .03 FRACTIONAL = ± 1/32		MATERIAL			
BREAK ALL SHARP EDGES		SEE MATL LIST			
		W.G.D 107493		SIZE	CODE IDENT NO.
		APPROVED		C 16603	2150.240C018
				SCALE 1/1	WT
				LB	SHEET 1 OF 1