

5

4

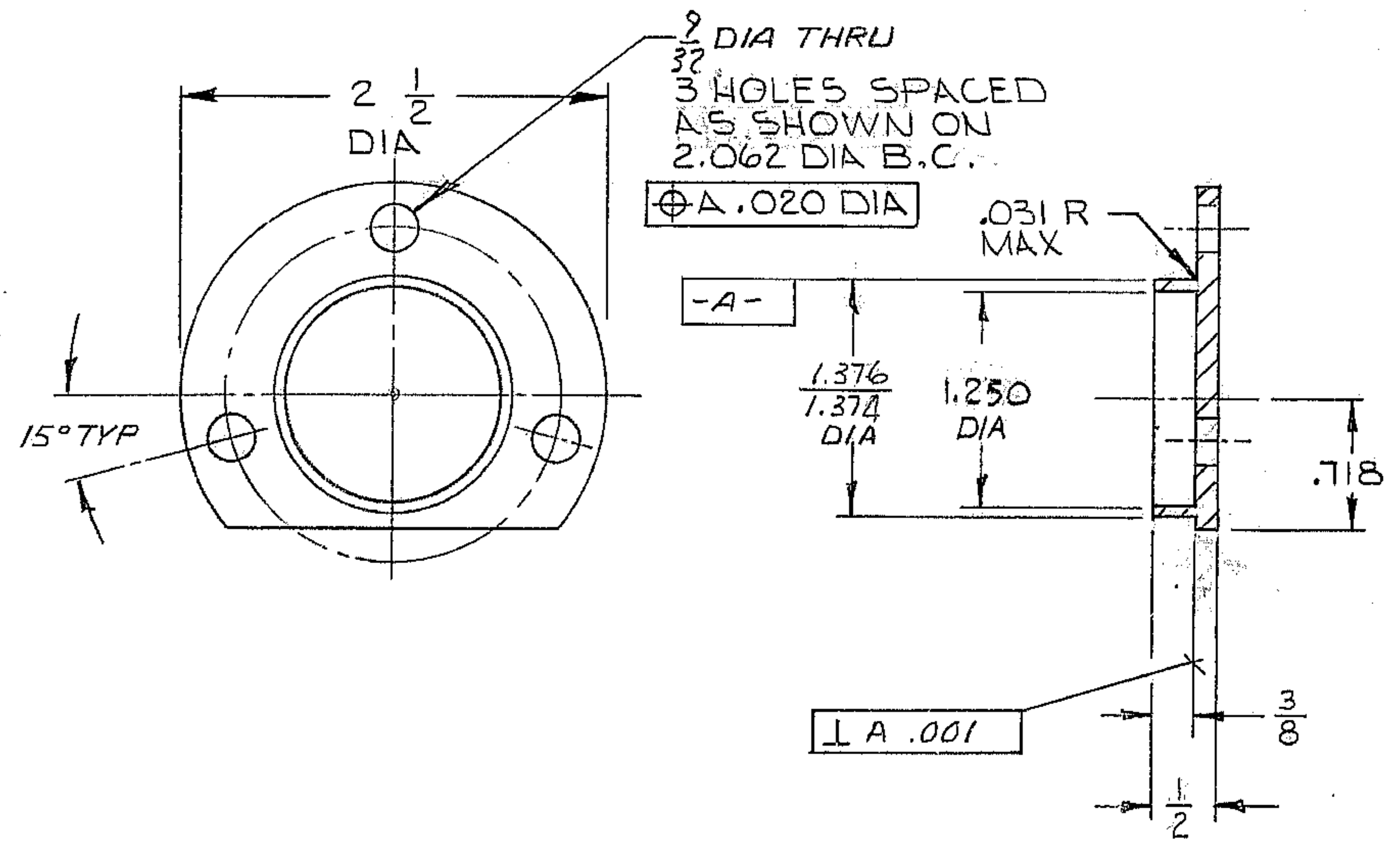
3

2

1

REVISIONS

| ZONE | LTR | DESCRIPTION  | DATE    | APPROVED |
|------|-----|--|---------|----------|
| 4C   | A   | 1.250 WAS 1.270                                    |         |          |
| 2C   | A   | (NOTE 2) 2 3/4 DIA X 3/4 LG WAS 2 1/2 DIA X 1/2 LG | 9/17/68 |          |
| 1A   | B   | WORM WAS L.S.                                      | 4/11/73 | LDS      |



NOTES:

1. FINISH 125V ALL OVER
2. MATL: STL BAR AISI C1018 2 3/4 DIA X 3/4 LG OR EQUIV.
3. ALL DIMENSIONS ARE IN INCHES.
4. TAG WITH PART NO. 2150-240B027.

WESTERN GEAR CORPORATION  
 CONSTRUCTION PROJECTS  
 DEPARTMENT  
 APPROVED FOR  
 PROCUREMENT  
 DATE SEP 18 1968

NEXT ASSY: 2150-240 E002 (W.G.N 102993)

REF FILE 1167

|   |  |   |                 |
|---|--|---|-----------------|
| LIMITS ON MACHINED DIMENSIONS EXCEPT AS NOTED<br>ANGULAR ± 1° 0'<br>LINEAR<br>.X = ± .1<br>.XX = ± .03<br>.XXX = ± .010<br>FRACTIONAL ± 1/32<br><br>BREAK ALL SHARP EDGES | 150 IN. STELLAR TELESCOPE MTG                                | Western GEAR CORPORATION HEAVY MACHINERY DIVISION EVERETT, WASHINGTON |                 |
|   | DRAWN T.E. HARPER 4-11-68<br>CHECK R. NIEVES 5-29-68<br>ENGR | RETAINER, BEARING, WORM CASSEGRAIN RAMP ASSEMBLY                      |                 |
| W.G.C 112503  | SIZE B   | CODE IDENT NO. 16603  | 2150.240B027    |
| APPROVED  | SCALE 1/16"  | WT.   | LB SHEET 1 OF 1 |