

5

4

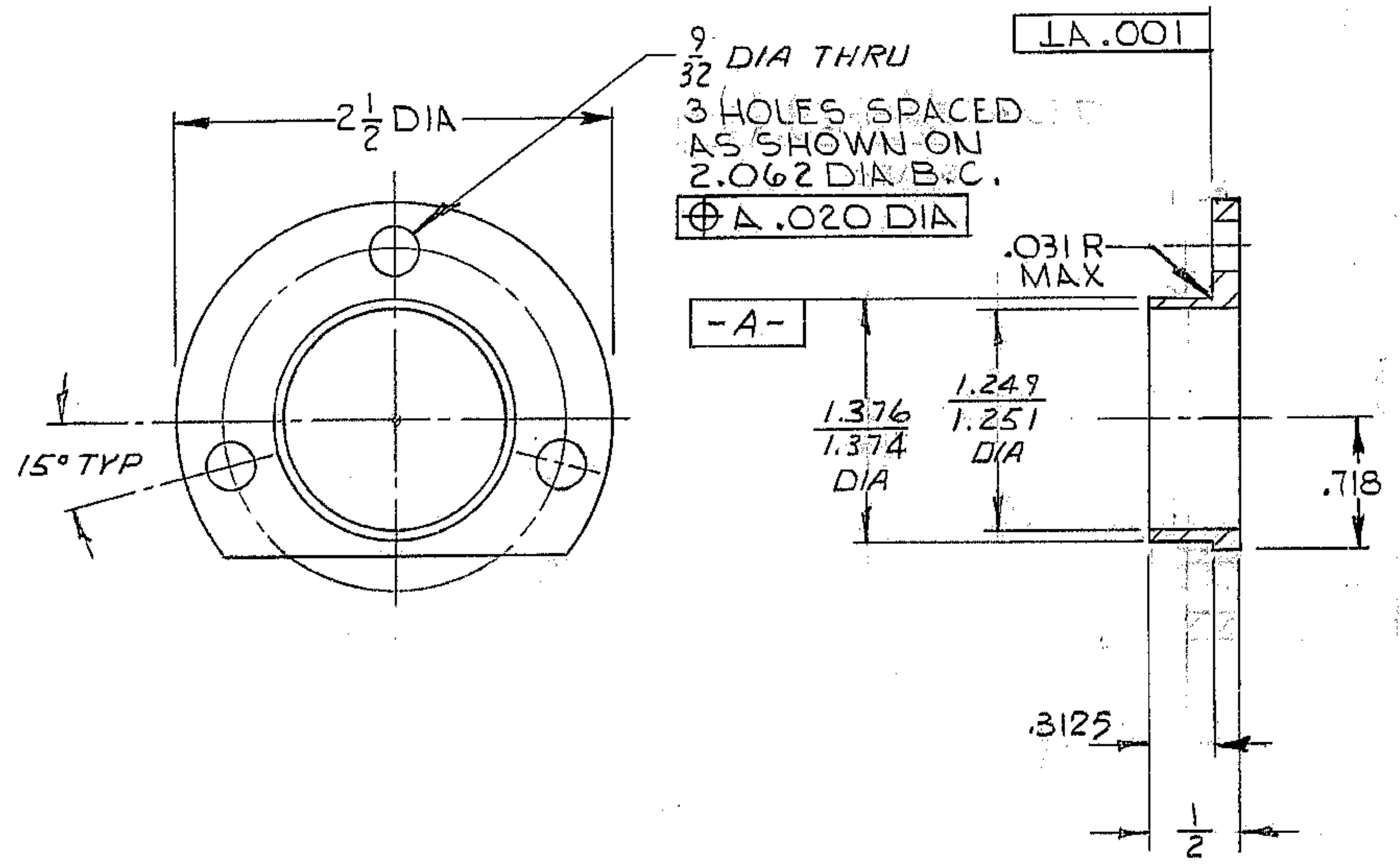
3

2

1

REVISIONS

ZONE	LTR	DESCRIPTION	DATE	APPROVED
4B	A	13125 WAS 3/8	9/17/68	
2C	A	MATL WAS 2 1/2 DIA X 1/2 LG		
1A	B	WORM WAS L.S.	4/11/73	LDS



NOTES:

1. FINISH 125 ALL OVER EXCEPT AS NOTED.
2. MATL: STL BAR AISI C1018 2 3/4 DIA X 5/8 LG OR EQUIV.
3. ALL DIMENSIONS ARE IN INCHES.
4. TAG WITH PART NO. 2150.240B026.

WESTERN GEAR CORPORATION
 CONSTRUCTION PROJECTS
 DEPARTMENT
**APPROVED FOR
 PROCUREMENT**
 G.R. DATE SEP 18 1968

REF. FILE 1167

NEXT ASSY: 2150.240 E002 (W.G.N.102993)

LIMITS ON MACHINED DIMENSIONS EXCEPT AS NOTED ANGULAR ± 1° 0' LINEAR .X = ± .1 .XX = ± .03 .XXX = ± .010 FRACTIONAL ± 1/32 BREAK ALL SHARP EDGES	150 IN STELLAR TELESCOPE MTG	WESTERN GEAR CORPORATION HEAVY MACHINERY DIVISION EVERETT, WASHINGTON	
	DRAWN T.E. HARPER 4-11-68 CHECK R. NIEVES 5-29-68 ENGR	RETAINER, BEARING, WORM CASSEGRAIN RAMP ASSEMBLY	
APPROVED	W.G.C112505	SIZE B	CODE IDENT NO. 16603
		SCALE 1/16"	WT. LB SHEET / OF /
			2150.240B026 REV B