

5

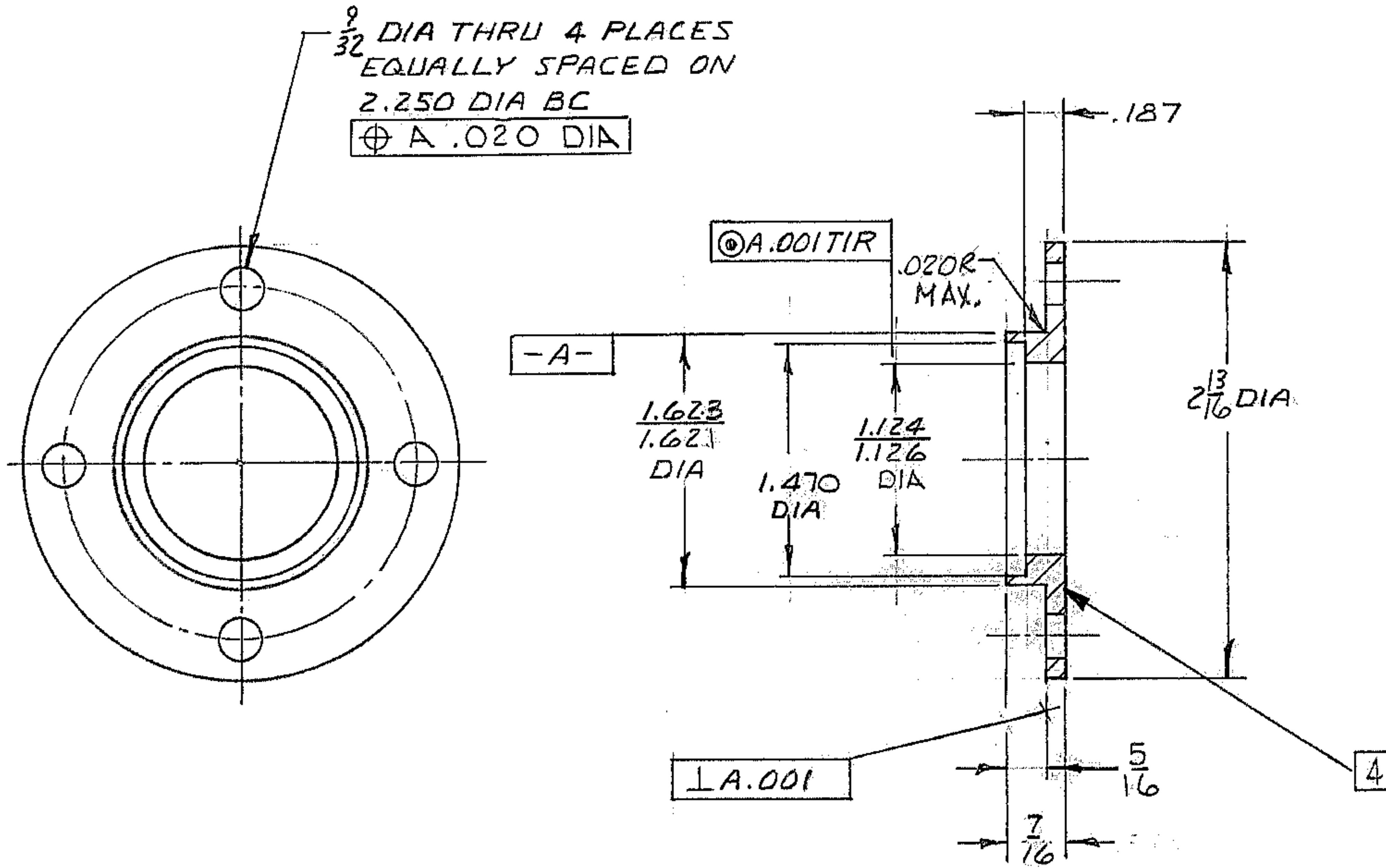
4

3

2

1

REVISIONS				
ZONE	LTR	DESCRIPTION	DATE	APPROVED
3C	A	.020R MAX WAS .031R MAX	9/17/68	
3B	A	7/16 WAS 3/8		
4c	A	1.470 WAS 1.47		
2C	A	MATL WAS 2 3/16 DIA X 3/8 LG		
1A	B	DRIVE WAS H.S.	4/11/73	LDS



- NOTES:
1. FINISH 125V ALL OVER EXCEPT AS NOTED.
 2. ALL DIMENSION ARE IN INCHES.
 3. MATL: STL BAR AISI C1018 3. DIA X 5/8 LG OR EQUIV.
 4. STAMP PART NO. 2150.240B025 APPROX WHERE SHOWN.

WESTERN GEAR CORPORATION
 CONSTRUCTION PROJECTS
 DEPARTMENT
 APPROVED FOR
 PROCUREMENT
 GR DATE SEP 18 1968

REF. FILE 1167

NEXT ASSY: 2150.240E002 (W.G.N 102993)

LIMITS ON MACHINED DIMENSIONS EXCEPT AS NOTED ANGULAR ± 1° 0' LINEAR .X = ± .1 .XX = ± .03 .XXX = ± .010 FRACTIONAL ± 1/32 BREAK ALL SHARP EDGES	150 IN. STELLAR TELESCOPE MTG	WESTERN GEAR CORPORATION HEAVY MACHINERY DIVISION EVERETT, WASHINGTON	
	DRAWN T.E. HARPER 4-11-68 CHECK R. NIEVES 6-29-68 ENGR	RETAINER, BEARING, DRIVE CASSEGRAIN RAMP ASSEMBLY	
W.G.C112504	SIZE B	CODE IDENT NO. 16603	2150.240B025
APPROVED	SCALE 7/11	WT.	LB SHEET 1 OF 1