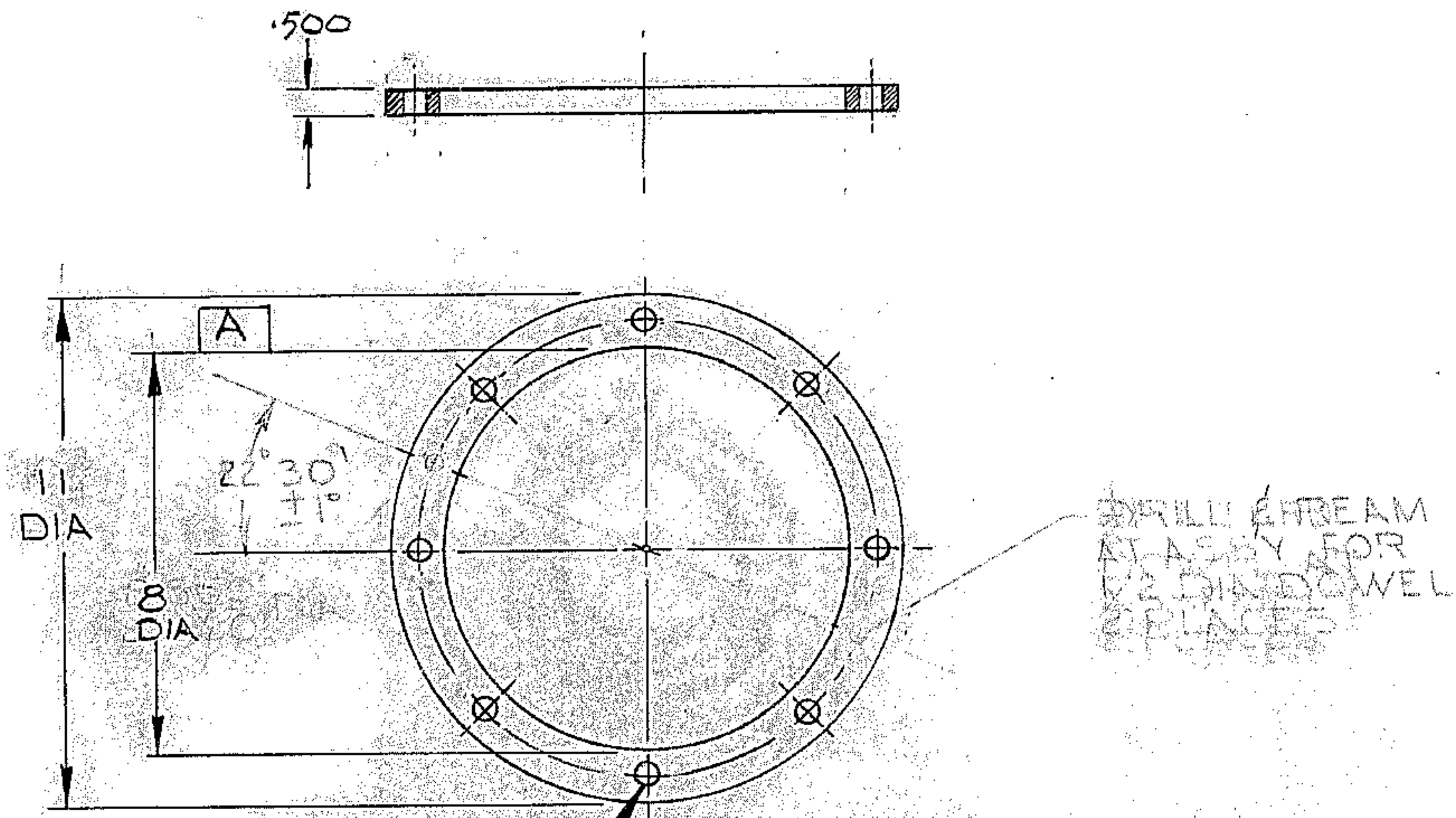


REVISIONS				
ZONE	LTR	DESCRIPTION	DATE	APPROVED
4D	A	VIEW SHOWING FINISHED THICKNESS ADDED	9/17/68	
5C	A	8 DIA WAS 8.550/8.560 DIA		
3C	A	MAT <sup>l</sup> WAS STL BAR AISI C1018		
"	A	BAR SIZE WAS 11 DIA X 1/2 THK		
	B	DELETE DOWEL REF	4/11/73	LD



- NOTES:
- 1 ALL DIMENSIONS ARE IN INCHES.
  - 2 SURFACE FINISH 125/ ALL OVER.
  - 3 TAG WITH PART NO. 2150.240B011.
  - 4 MATERIAL : STL PLATE MAISI C1018 1 1/4 DIA x 3/4 THK OR EQUIVA 1 1/4 DIA WALL X 1/2 THK OR EQUIVA

WESTERN GEAR CORPORATION  
 CONSTRUCTION PROJECTS  
 DEPARTMENT  
 APPROVED FOR  
 PROCUREMENT  
 DATE SEP 18 1968  
 GR

REV. FILE 1167

NEXT ASSY: 2150.240E 002 (W.G.N 102993)

LIMITS ON MACHINED DIMENSIONS EXCEPT AS NOTED ANGULAR ± 1° 0' LINEAR .X = ± .1 .XX = ± .03 .XXX = ± .010 FRACTIONAL ± 1/32  BREAK ALL SHARP EDGES	150 IN. STELLAR TELESCOPE MTG	western GEAR CORPORATION HEAVY MACHINERY DIVISION EVERETT, WASHINGTON	
	DRAWN R. ORR APL '68 CHECK R. VIEVES ENGR	SPACER, PIVOT CASSEGRAIN RAMP ASSY	
W.G.C 112507	APPROVED	SIZE B	CODE/IDENT NO. 16603 2150.240B011
		SCALE NONE	WT. LB SHEET 1 OF 1