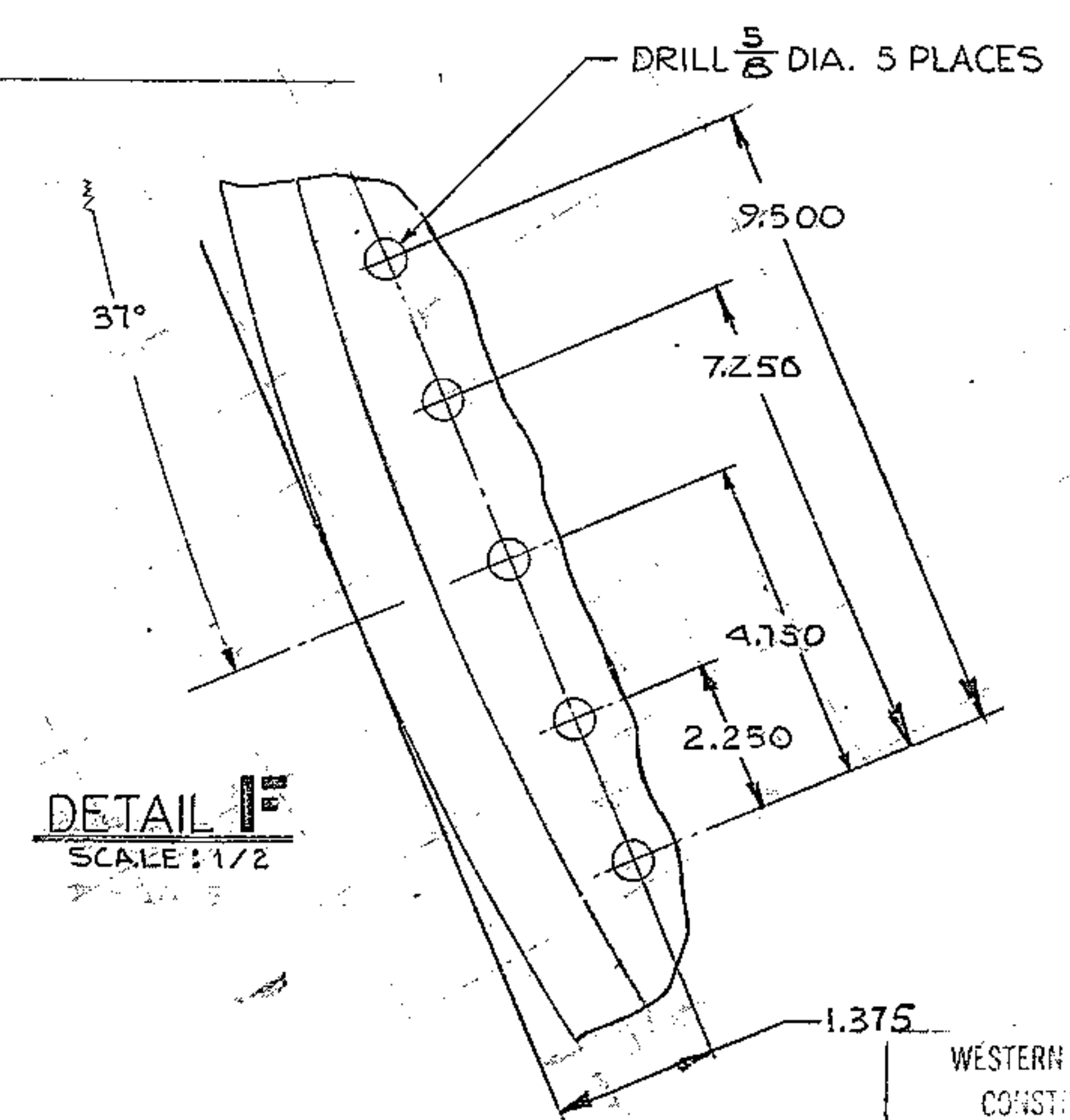
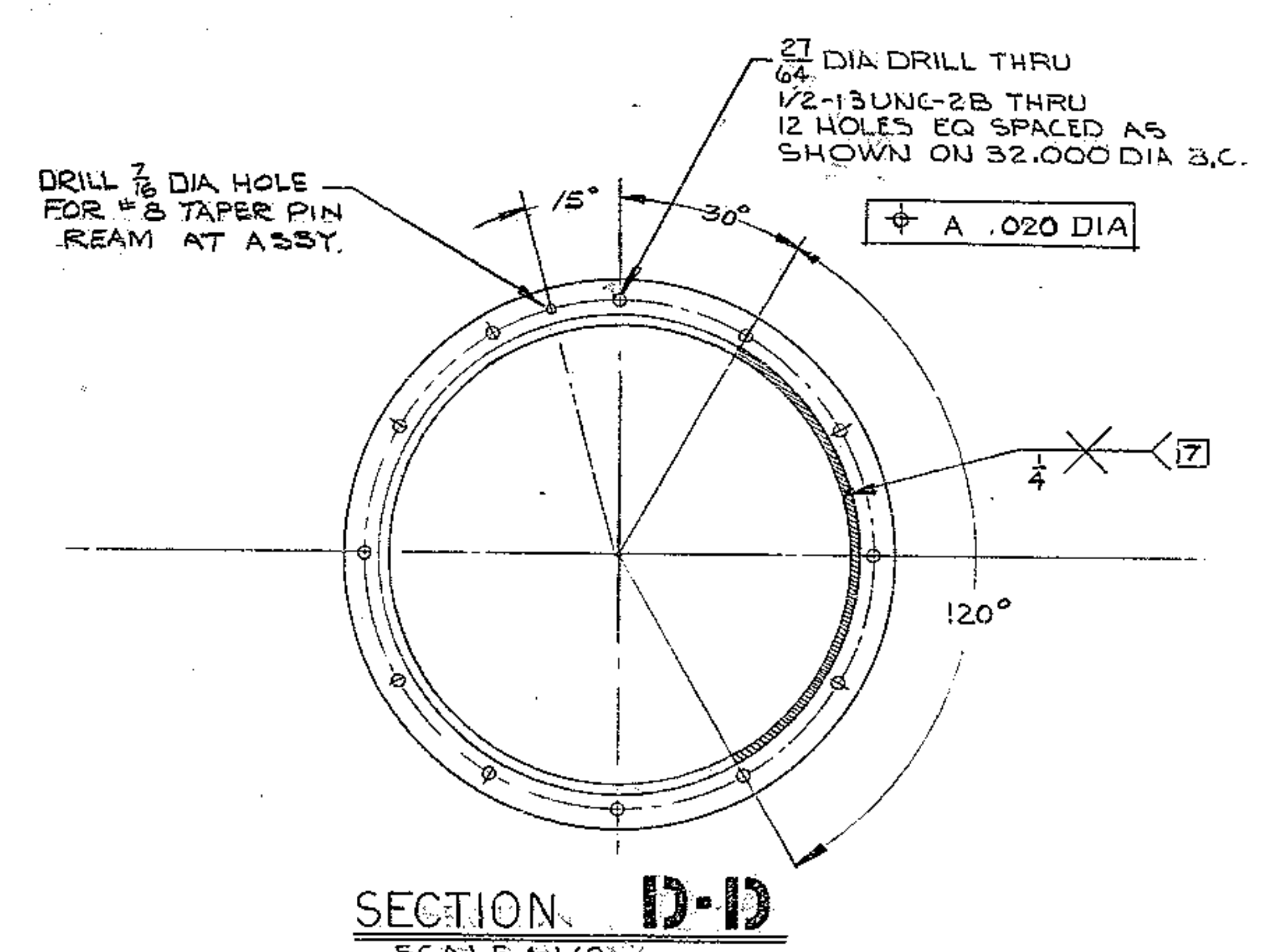
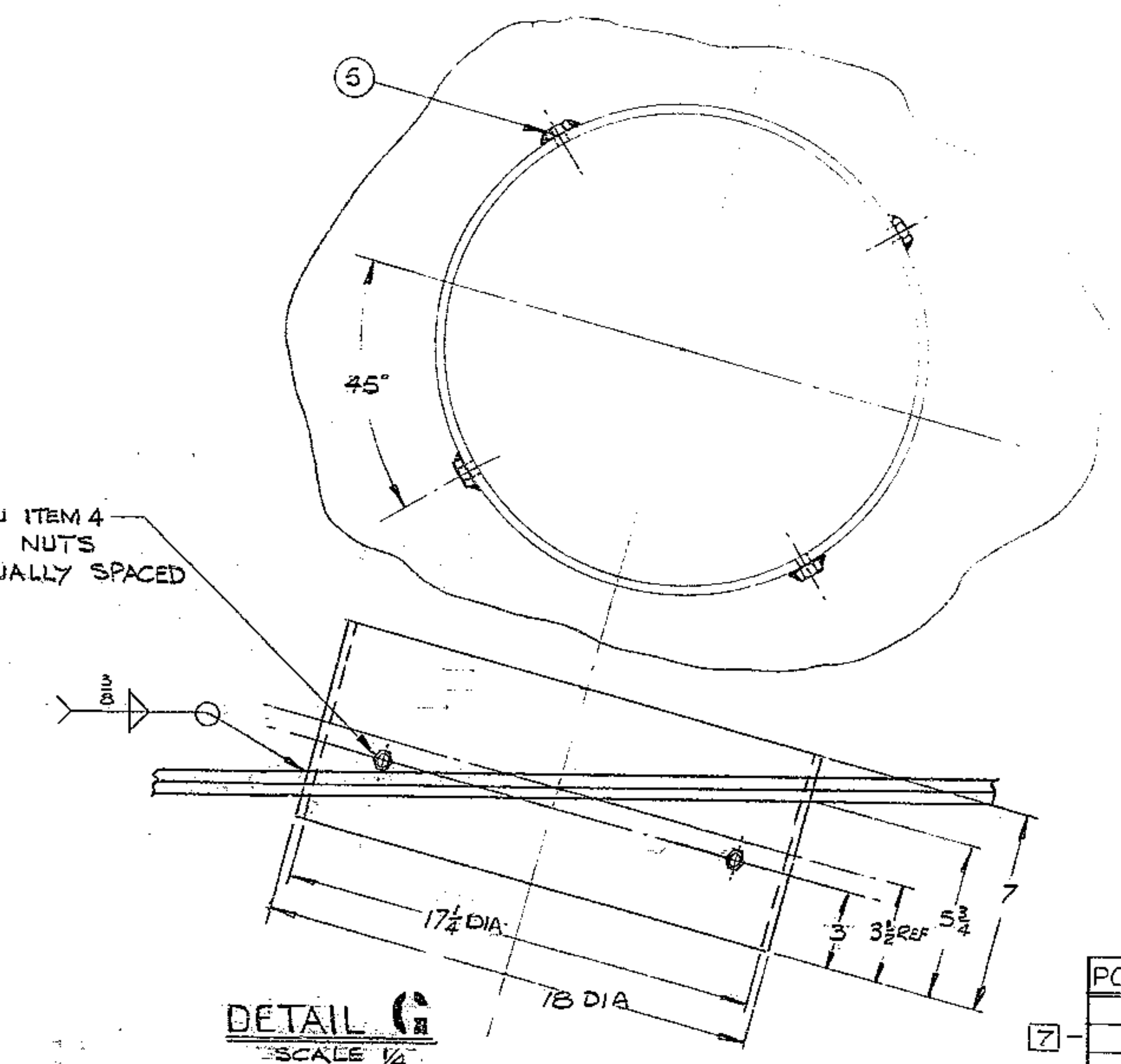
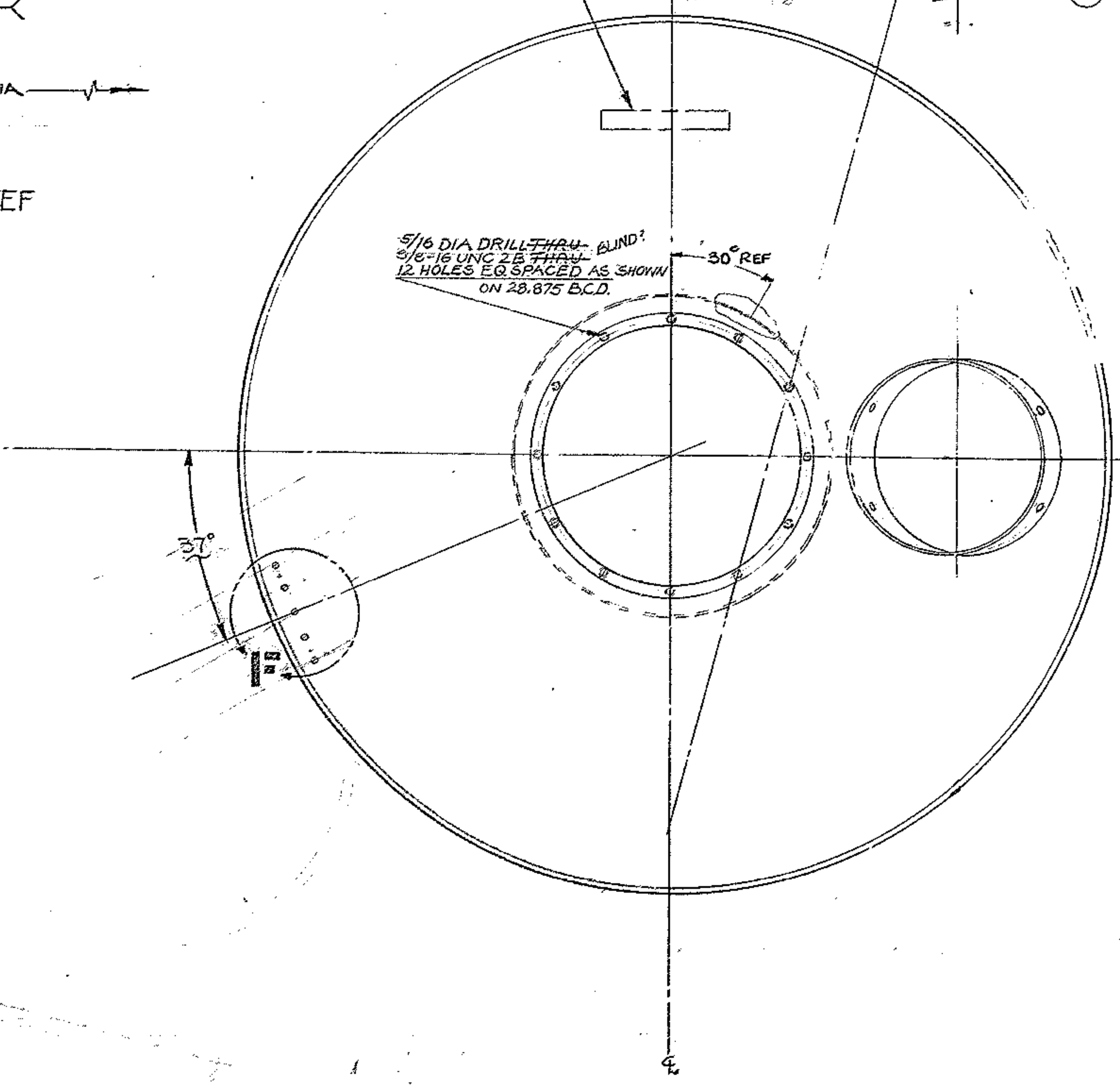
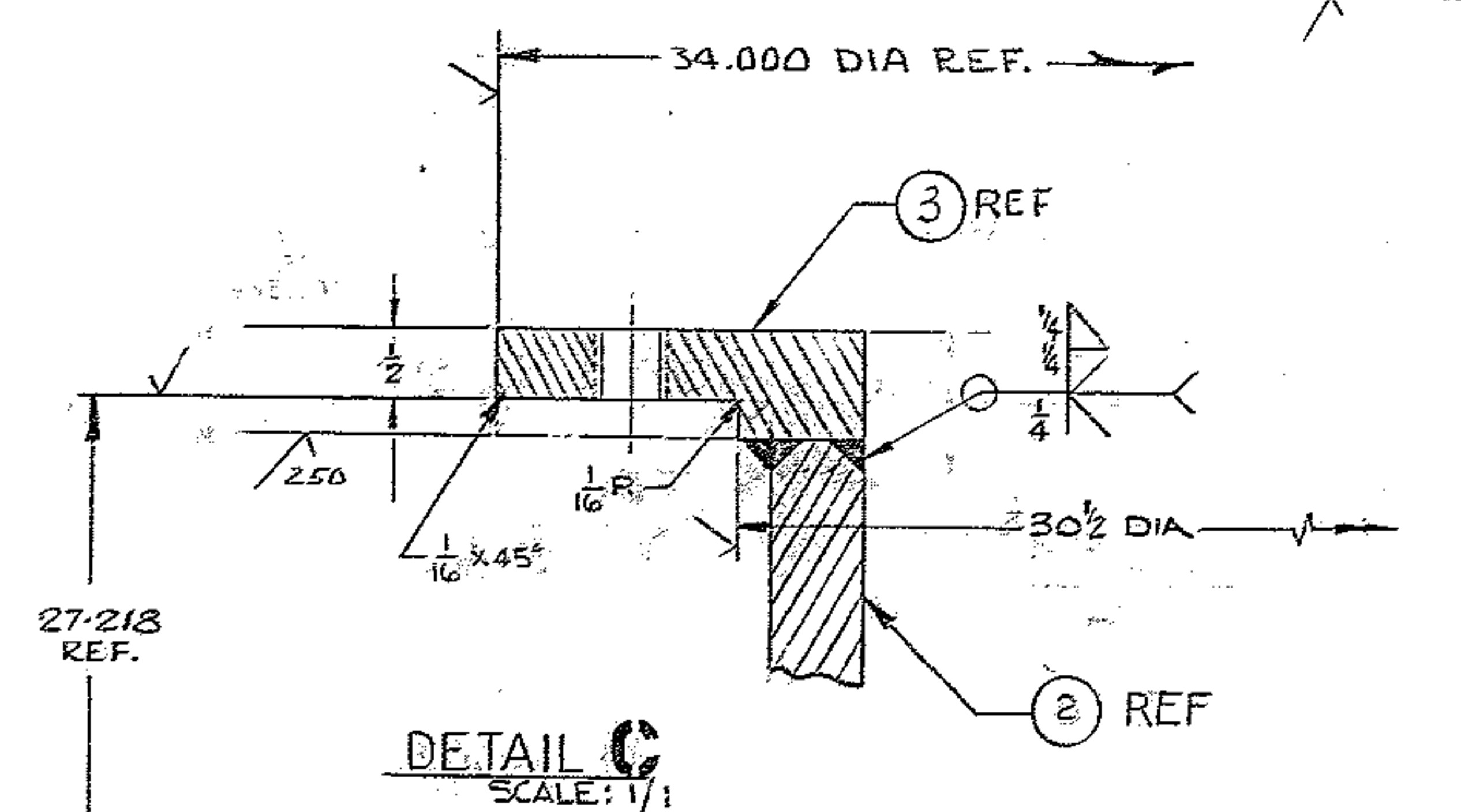
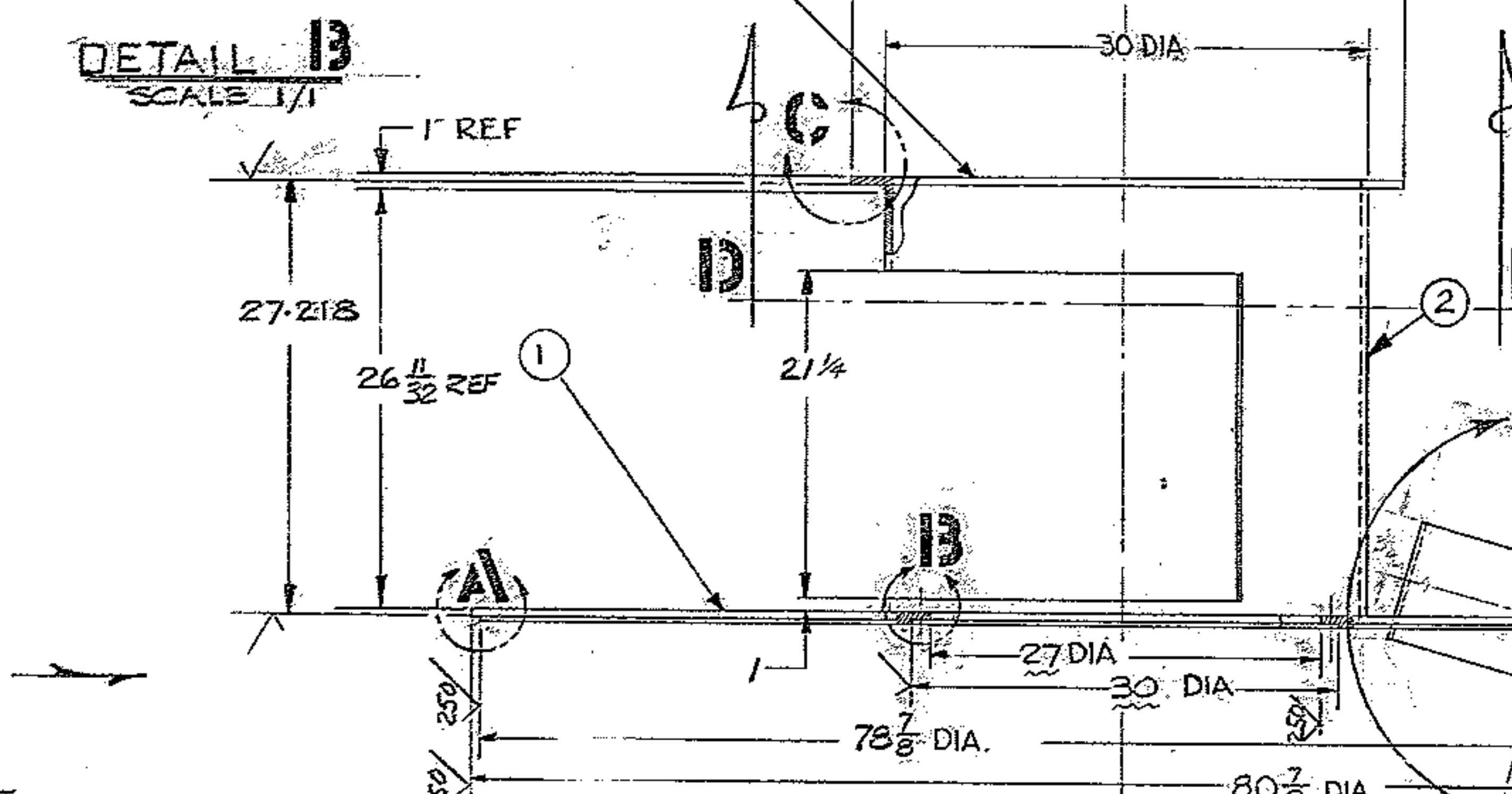
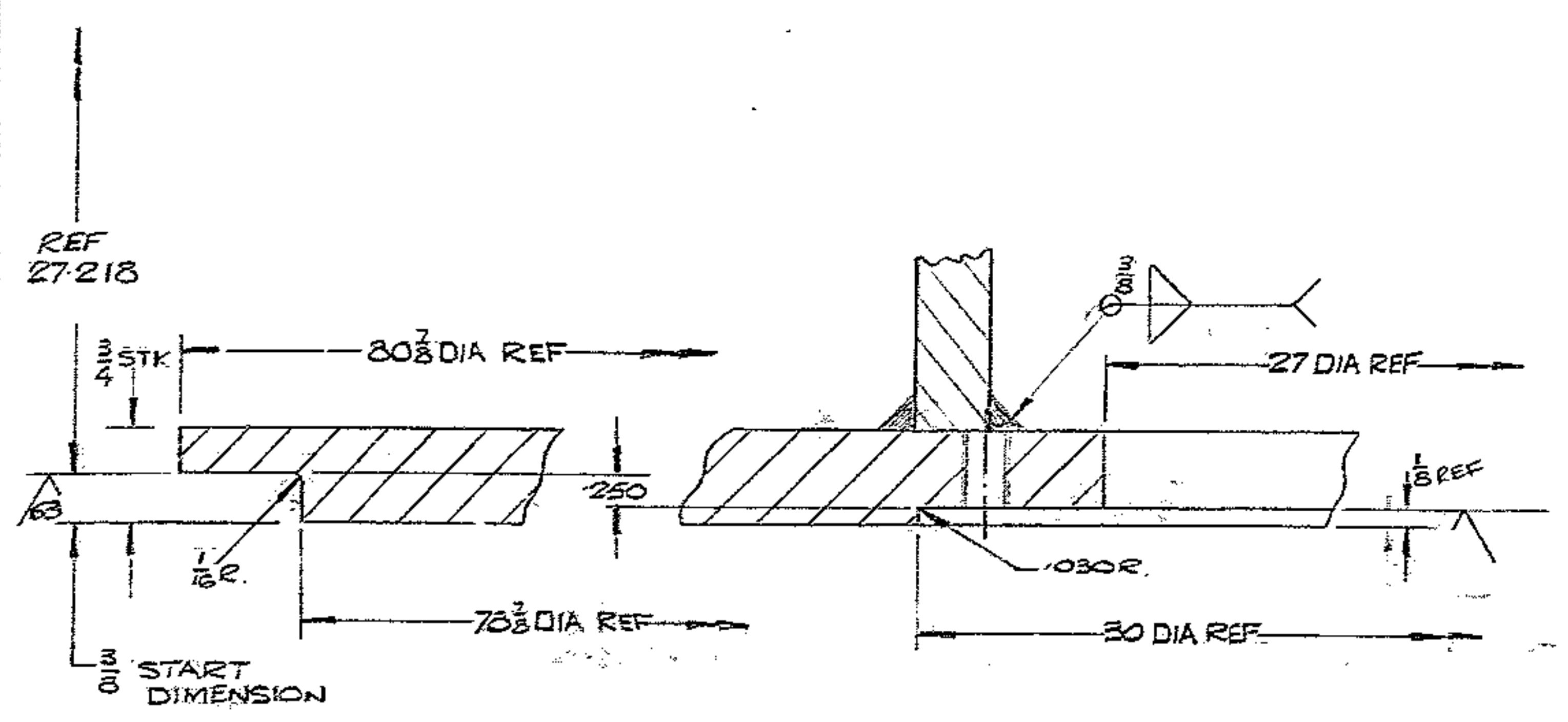


REVISIONS					
ZONE	LTR	DESCRIPTION	DATE	APPROVED	
A		APPROVED PER AUREA APPROVED PER	11-14-68		
F2	B	PC 4 18.0 D x 17.4 I.D x 7.6 WAS	3-30-68		
F2	B	18.0 D x 17.4 I.D. 34.000 ± .005 WAS 34.000 ± .005	3-30-68		
B-7	C	DELETED DETAIL 'F', ADDED HOLE PATTERN			
E-6	C	ADDED DETAIL 'F', CHANGED VIEW 'D-D'	1-28-68		
		D AS BUILT			



PC. NO.	QTY	DESCRIPTION	MAT'L & SPEC	ROUGH WT
1	1	R 8 1/2 DIA x 26 1/4 LD x 3/4	STL ASTM A36	1000
2	1	R 26 1/2 x 3/8 x 9 1/4	STL ASTM A36	440
3	1	R 34 1/2 DIA x 28 1/4 LD x 1	STL ASTM A36	81
4	1	TUBE 18 O.D. x 17 1/4 I.D. x 7.6	STL WELDED PIPE EQUV	55
5	4	3-13 UNC-2B NUT SAE MED	STEEL	
TOTAL ROUGH WT				1576

- NOTES:
- FABRICATION TOLERANCES EXCEPT AS NOTED:
UP TO 10 INCHES ± 1/16
UP TO 50 INCHES ± 1/8
50 INCHES & OVER 1/4
 - WELD PER WGC SPECIFICATION 752 APP T1
 - STRESS RELIEVE AFTER WELDING & BEFORE MACHINING PER WGC SPECIFICATION 510.
 - APPLY ONE COAT OF PRIMER PAINT ALL OVER PER WGC SPECIFICATION 511 IMMEDIATELY AFTER STRESS RELIEVING AND CLEANING ALL SURFACES MARKED ✓ TO BE ✓ EXCEPT AS NOTED
 - ALL DIMENSIONS ARE IN INCHES.
 - ROLLED AND BUTT WELD AS SHOWN
 - STAMP PART NO. 2150.210E 004 APPROX WHERE SHOWN.

NEXT ASSY: 2150.210E 002 (WGN 102833)

FIND NO.	PART NO.	DESCRIPTION	QTY	MATERIAL	CODE IDENT
LIST OF MATERIAL (LM)					
LIMITS ON MACHINED DIMENSIONS EXCEPT AS NOTED					
ANGULAR = ± 1°					
LINEAR:					
XX = ± .1 XXX = ± .010					
YX = ± .03 FRACTIONAL = ± 1/32					
BREAK ALL SHARP EDGES					
MATERIAL					
SEE MAT'L LIST					
WESTERN GEAR CORPORATION CONSTRUCTION PROJECTS DEPARTMENT APPROVED FOR PROCUREMENT DATE: 11-14-68					
150 INCH STELLAR TELESCOPE MOUNTING					
DRAWN L. JOHNSON 2-29-68 CHECK JOHN KISS 11/22/68 ENGR					
WESTERN GEAR CORPORATION HEAVY MACHINERY DIVISION EVERETT, WASHINGTON					
TUBE SUPPORT POLAR AXLE ASSEMBLY					
WGN 102965					
SIZE CODE IDENT NO.					
E 16603 2150.210E 004					
APPROVED					
SCALE: 3/8" = 1" WT 1510 LB SHEET 1 OF 1					