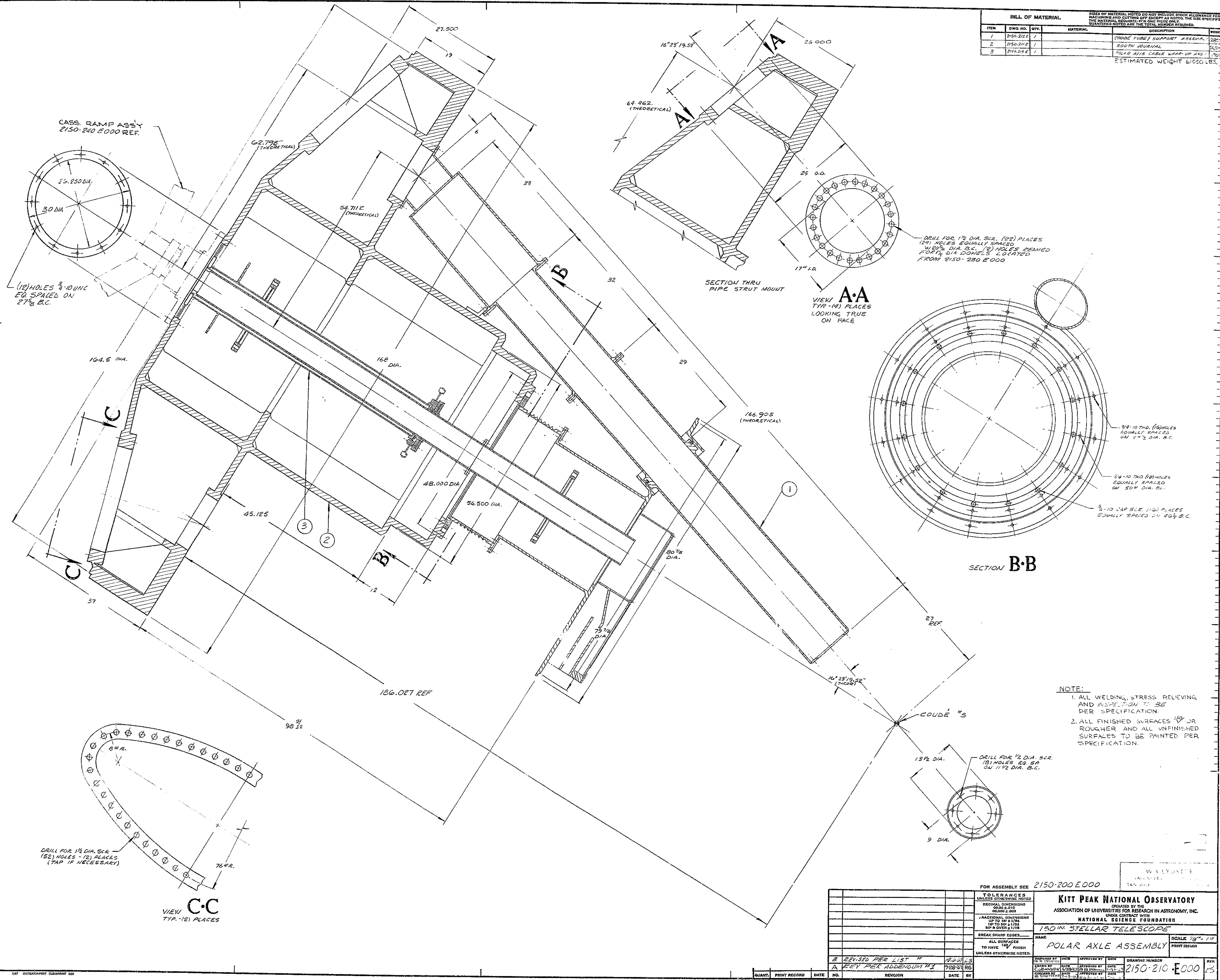


BILL OF MATERIAL				SIZES OF MATERIAL NOTED DO NOT INCLUDE STOCK ALLOWANCE FOR MACHINING AND CUTTING OFF EXCEPT AS NOTED. THE SIZE SPECIFICS THE MATERIAL REQUIRED FOR ONE PIECE ONLY. QUANTITIES NOTED ARE THE TOTAL NUMBER REQUIRED.	
ITEM	DWG. NO.	QTY.	MATERIAL	DESCRIPTION	WEIGHT
1	2150.210 E	1		COUDE TUBE / SUPPORT ASSEMBLY	28.2
2	2150.211 E	1		SOUTH JOURNAL	54.0
3	2150.212 E	1		POLAR AXLE CABLE WRAP-UP ASS.	170.1

ESTIMATED WEIGHT 61050 LBS.



NOTE:

1. ALL WELDING, STRESS RELIEVING, AND INSPECTION TO BE PER SPECIFICATION.
2. ALL FINISHED SURFACES TO BE ROUGHENED OR SMOOTHENED AND ALL UNFINISHED SURFACES TO BE PAINTED PER SPECIFICATION.

FOR ASSEMBLY SEE 2150-200 E 000

TOLERANCES UNLESS OTHERWISE NOTED		KITT PEAK NATIONAL OBSERVATORY	
DECIMAL DIMENSIONS	0.000 ± 0.015	OPERATED BY THE ASSOCIATION OF UNIVERSITIES FOR RESEARCH IN ASTRONOMY, INC.	
FRACTIONAL DIMENSIONS	UP TO & 1/16 0.000 ± 0.003	UNDER CONTRACT WITH NATIONAL SCIENCE FOUNDATION	
1/8 TO 3/16	± 0.002	NAME 150 IN STELLAR TELESCOPE	
3/8 & OVER	± 0.003	SCALE 1/8" = 1"	
BREAK SHARP EDGES.		PRINT ISSUED	
ALL SURFACES TO HAVE 12V FINISH UNLESS OTHERWISE NOTED.		DRAWING NUMBER 2150-210 E 000	

REVISIONS:

NO.	REVISION	DATE	BY
B	REVISED PER LIST #		A.W.D./L.S.
A	REVISED PER ADDENDUM #1	7/28/61	R.G.

APPROVED BY: [Signature] DATE: 7/28/61

QUANT. PRINT RECORD DATE NO. REVISION