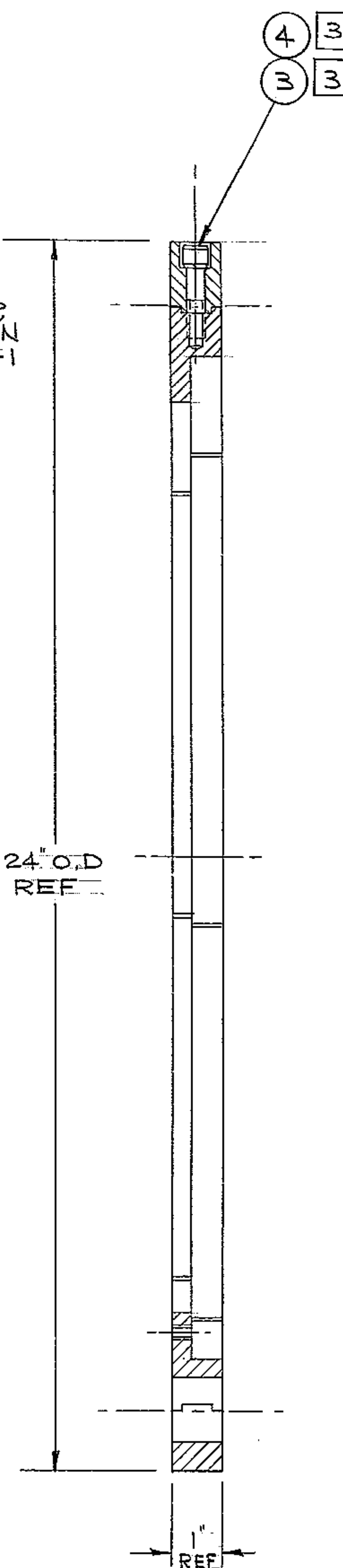
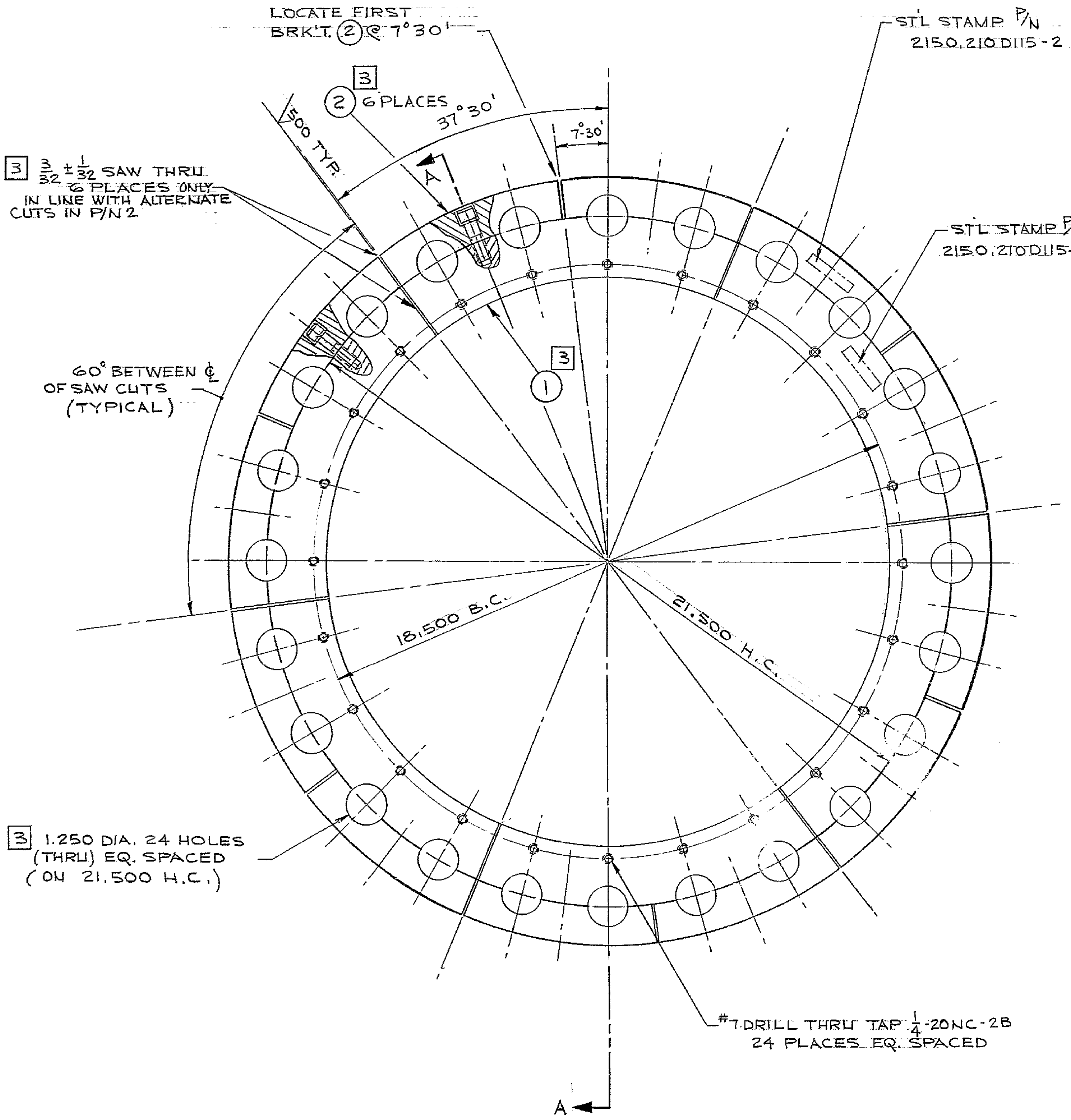


THIS DOCUMENT CONTAINS INFORMATION PROPRIETARY TO WESTERN GEAR CORPORATION. ALL DESIGN, MANUFACTURING, REPRODUCTION, USE, PATENT AND SALES RIGHTS REGARDING THE SAME ARE HEREBY EXPRESSLY RESERVED BY WESTERN GEAR CORPORATION. THIS DOCUMENT IS SUBMITTED FOR REFERENCE PURPOSES ONLY AND SHALL NOT BE DISCLOSED TO ANY UNAUTHORIZED PERSON OR INCORPORATED INTO ANY OTHER PROJECT.

REVISIONS				
ZONE	LTR	DESCRIPTION	DATE	APPROVED
	B	REVISED & REDRAWN	4-7-69	
	C	REVISED PER AURA APPD PRINT	10-6-69	



SECT. A-A

WESTERN GEAR CORPORATION  
CONSTRUCTION PROJECTS  
DEPARTMENT  
APPROVED FOR  
PROCUREMENT  
6R DATE 1/23/69

NOTES

1. STL. STAMP ITEM #1 WITH PART NO. 2150,210D115-1
2. " " " #2 " " " 2150,210D115-2
2. THIS DWG. CONSIST OF 6 SUB-ASS'YS. 8.5# EA.
- 3 a) ASSEMBLE P/N ① & ② WITH PROPER P/N ③ & ④
- b) DRILL 1.250 DIA. HOLES 24 PLACES & 1/4-20NC-2B TAP 24 PLACES ON CENTER WITH 1.250 DIA. HOLES
- c) DIVIDE ASSEMBLED P/N ① & ② IN 6 SEGMENTS. (MATCH MARK & KEEP SEGMENTS ASSEMBLED)

BILL OF MAT'L

ITEM No.	DWG. No.	QTY	DESCRIPTION	MAT'L	SPEC	UNIT WT.
1	2150,210C124	1	CABLE BRK'T.	ST'L	ASTM-A-7	24
	WGD107,559					
2	2150,210D110	6	CABLE BRK'T.	ST'L	ASTM-A-7	27
	WGE-107,623					
3		12	3/8-16NC x 1 1/2 LG. SOC. HD CAPSCR.	ST'L	COMM'L	
4		12	3/8 HI-COLLAR L.W.	"	"	

NEXT ASS'Y. 2150,210E102 (WGN-102,959)

REF. FILE 1165

FIND NO.	PART NO.	DESCRIPTION	QTY	MATERIAL	CODE IDENT
LIMITS ON MACHINED DIMENSIONS EXCEPT AS NOTED					
ANGULAR = ± 1° 0'					
LINEAR:					
X = ± .1					
.XX = ± .03					
FRACTIONAL = ± 1/32					
BREAK ALL SHARP EDGES					
MATERIAL					
DRAWN McGHEE 47-69		CHECK		ENGR <i>Wingman</i> 1/23/69	
WGE 107,632		APPROVED		SIZE CODE IDENT NO. D 16603	
				2150,210D115	
				REV C	
SCALE 1/2		WT 51		LB SHEET 1 OF 1	