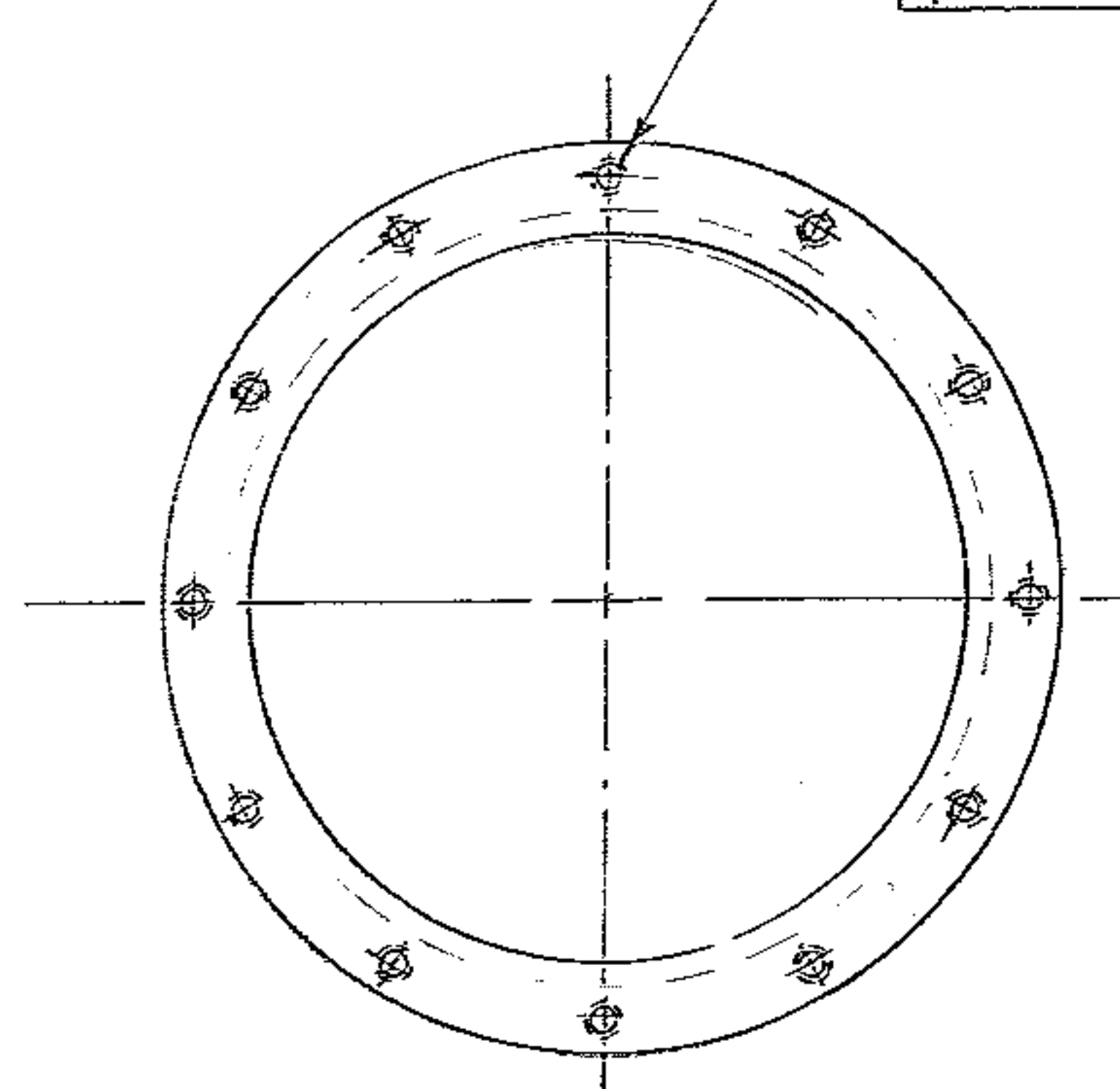


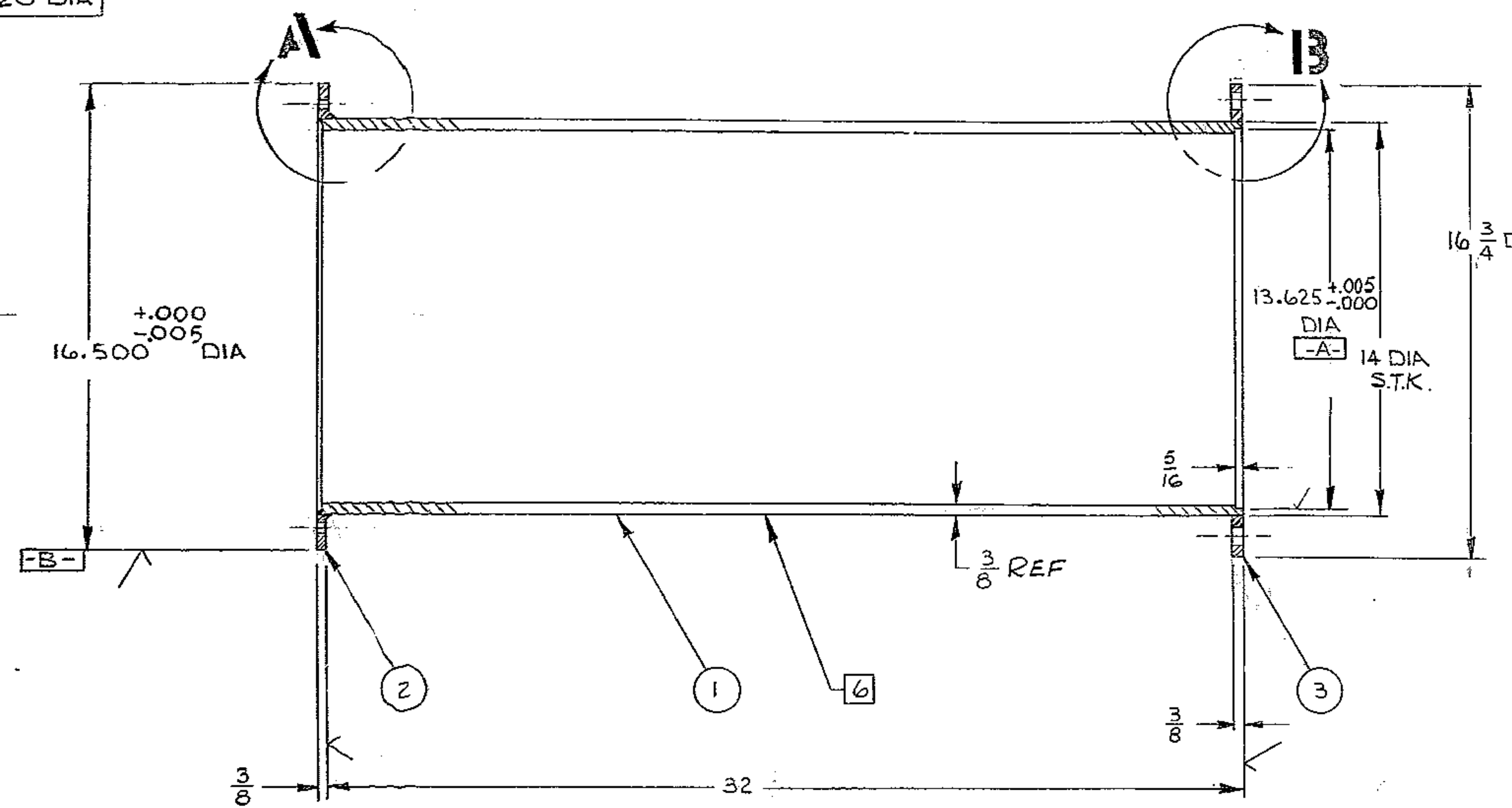
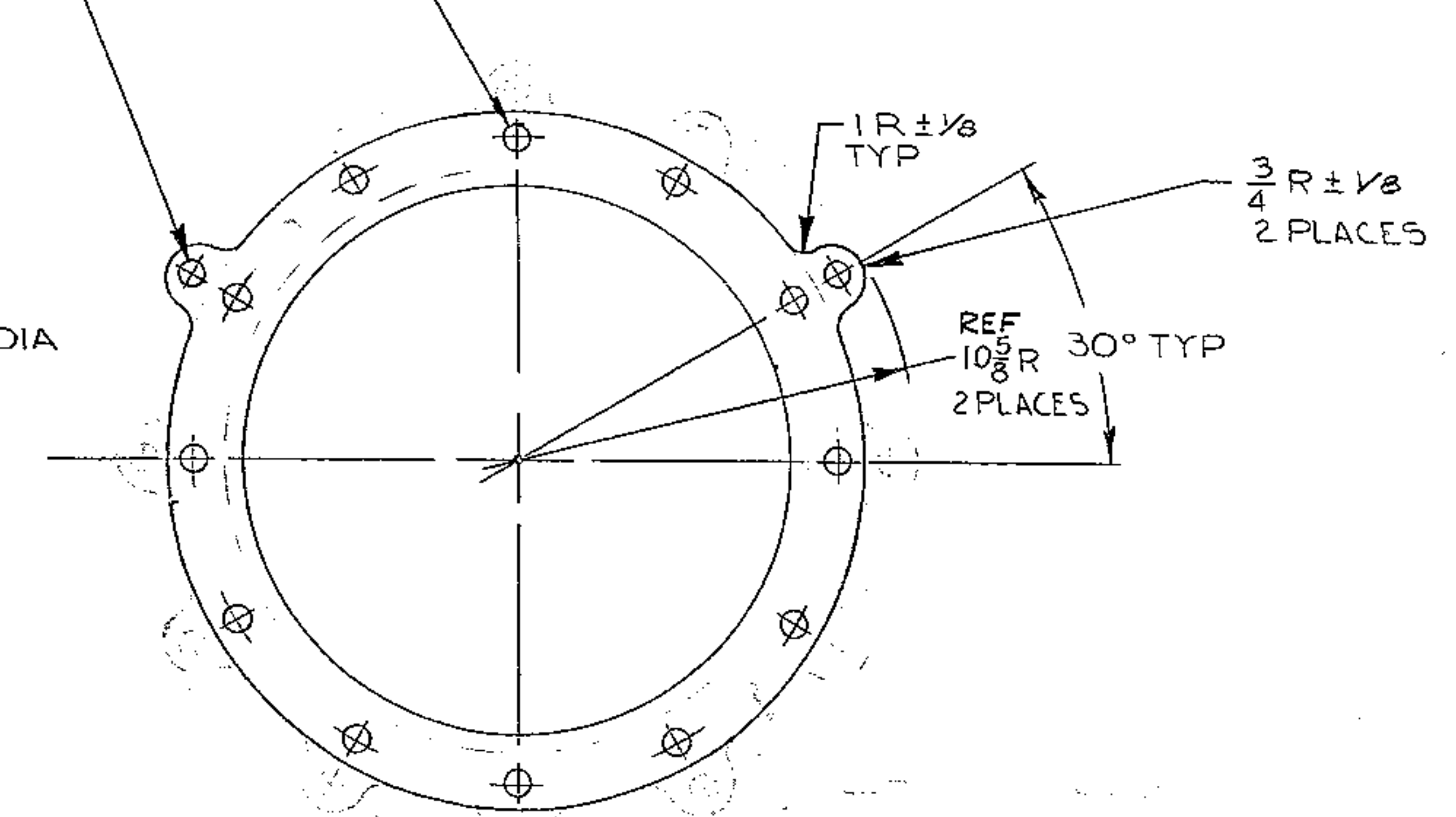
REVISIONS				
ZONE	LTR	DESCRIPTION	DATE	APPROVED
	A	APPROVED PER AURA APPROVED PRINT	2-14-68	
TC	B	16.500 ^{+0.000} _{-0.005} WAS 16.500 ^{+0.005} _{-0.005} , 13.625 ^{+0.005} _{-0.005}	3-30-68	
TC	C	WAS 13.625 ^{+0.005} _{-0.005}		

5/16 DIA DRILL THRU
TAP 3/8-16UNC-2B THRU
12 HOLES EQ SPACED AS SHOWN
ON 15.250 DIA B.C.
⊕ B .020 DIA



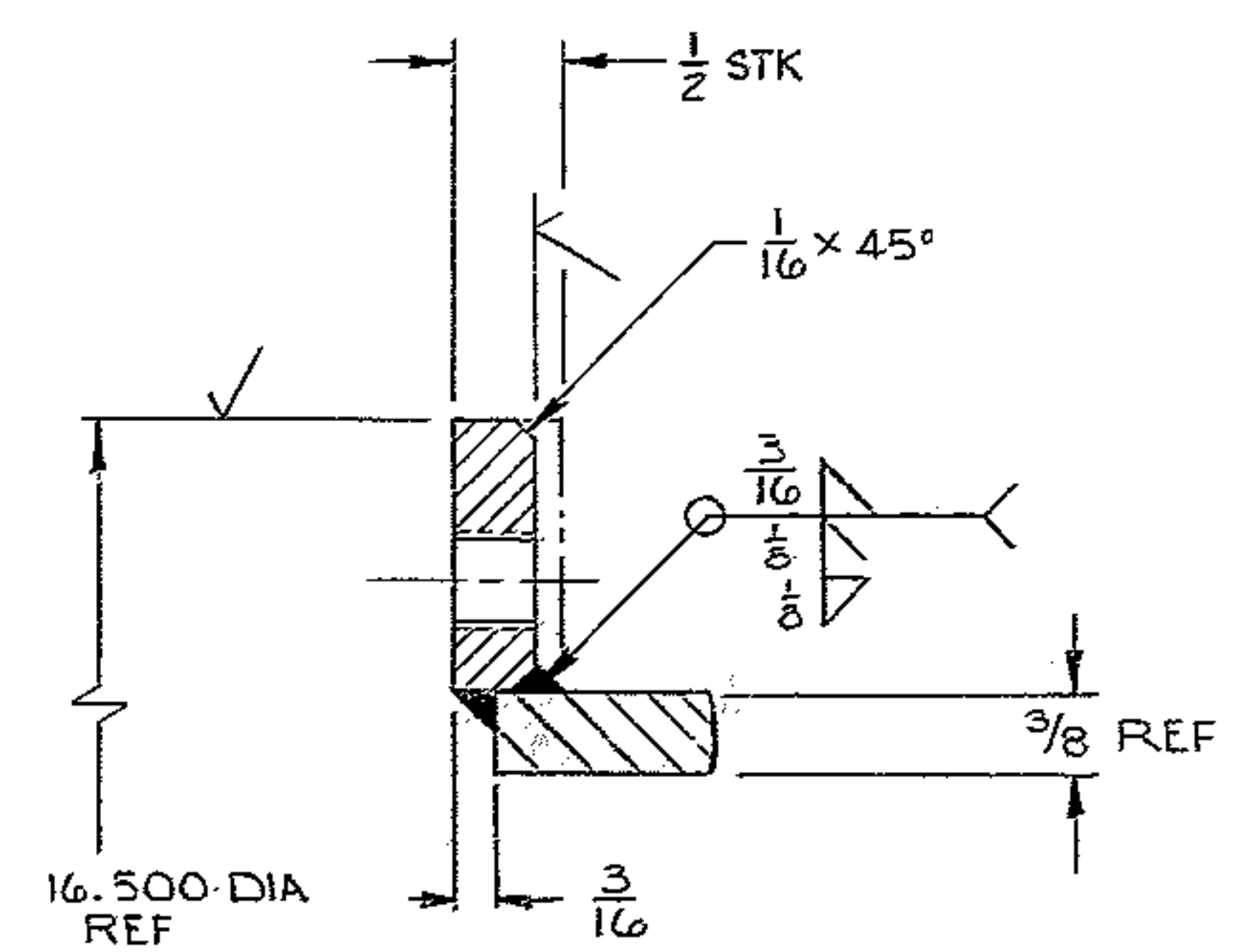
2/16 DIA DRILL THRU
2 HOLES ON A
19.750 DIA B.C.
⊕ A .020 DIA

9/16 DIA DRILL THRU
12 HOLES EQ. SPACED AS SHOWN
ON A 15.500 DIA B.C.
⊕ A .020 DIA

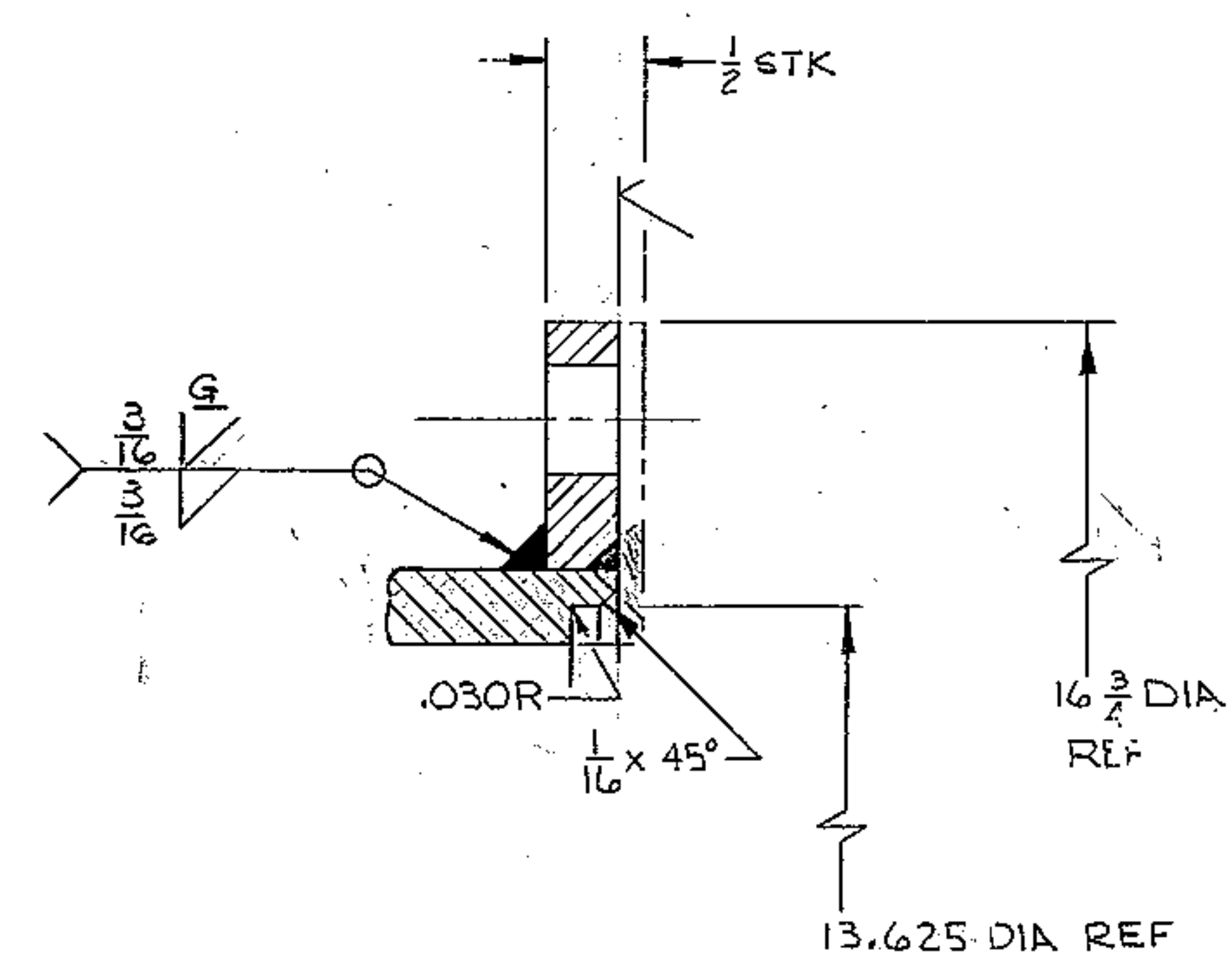


MATERIAL LIST				
P.C.NO.	QTY	DESCRIPTION	MAT'L & SPEC	ROUGH WT.
1	1	P PE 14 OD x 3/8W x 31 5/16	STL WELDED PIPE GREQUIV	148
2	1	R 16 3/4 DIA x 14 I.D. x 1/2 THK	STL ASTM A 36	12
3	1	R 1750 x 14 I.D. x 1/2 THK	STL ASTM A 36	19

TOTAL ROUGH WT = 179.



VIEW A
SCALE: 1/1



VIEW B
SCALE: 1/1

- NOTES:
- ALL DIMENSIONS ARE IN INCHES.
 - FABRICATION TOLERANCE EXCEPT AS NOTED
UP TO 10 INCHES ± 1/16
10 IN. TO 50 IN. ± 1/8
50 IN. AND OVER ± 1/4
 - WELD PER W.G.C. SPEC T52 APPT 1
 - STRESS RELIEVE AFTER WELDING & BEFORE MACHINING PER W.G.C. SPEC 510.
 - APPLY ONE (1) COAT PRIME PAINT ALL OVER PER W.G.C. SPEC 511 IMMEDIATELY AFTER STRESS RELIEF & CLEANING
 - STAMP PART NO. 2150.210D007 APPROX WHERE SHOWN.
 - UNLESS OTHERWISE NOTED ALL SURFACES MARKED √ TO BE 125/.

WESTERN GEAR CORPORATION
CONSTRUCTION PROJECTS
DEPARTMENT
APPROVED FOR
PROCUREMENT
DATE 2-14-68

NEXT ASSY: 2150.210E 002 (W.G.N 102833)

FIND NO.	PART NO.	DESCRIPTION	QTY	MATERIAL	CODE IDENT
LIST OF MATERIAL (LM)					
LIMITS ON MACHINED DIMENSIONS EXCEPT AS NOTED		150 IN. STELLAR TELESCOPE MOUNTING		 HEAVY MACHINERY DIVISION EVERETT, WASHINGTON	
ANGULAR = ± 1° 0'		DRAWN R. ORR FEB 68			
LINEAR:		CHECK Gene Russo 11 APR 68		TUBE, CENTER POLAR AXLE ASSEMBLY	
X = ± .1 .XXX = ± .010		ENGR			
.XX = ± .03 FRACTIONAL = ± 1/32				W.G. E 107626 APPROVED	
BREAK ALL SHARP EDGES					
MATERIAL		SEE MAT'L LIST		SIZE CODE IDENT NO. D 16603 2150.210D007 B	
				SCALE 1/4" = 1" WT 165 LB SHEET 1 OF 1	