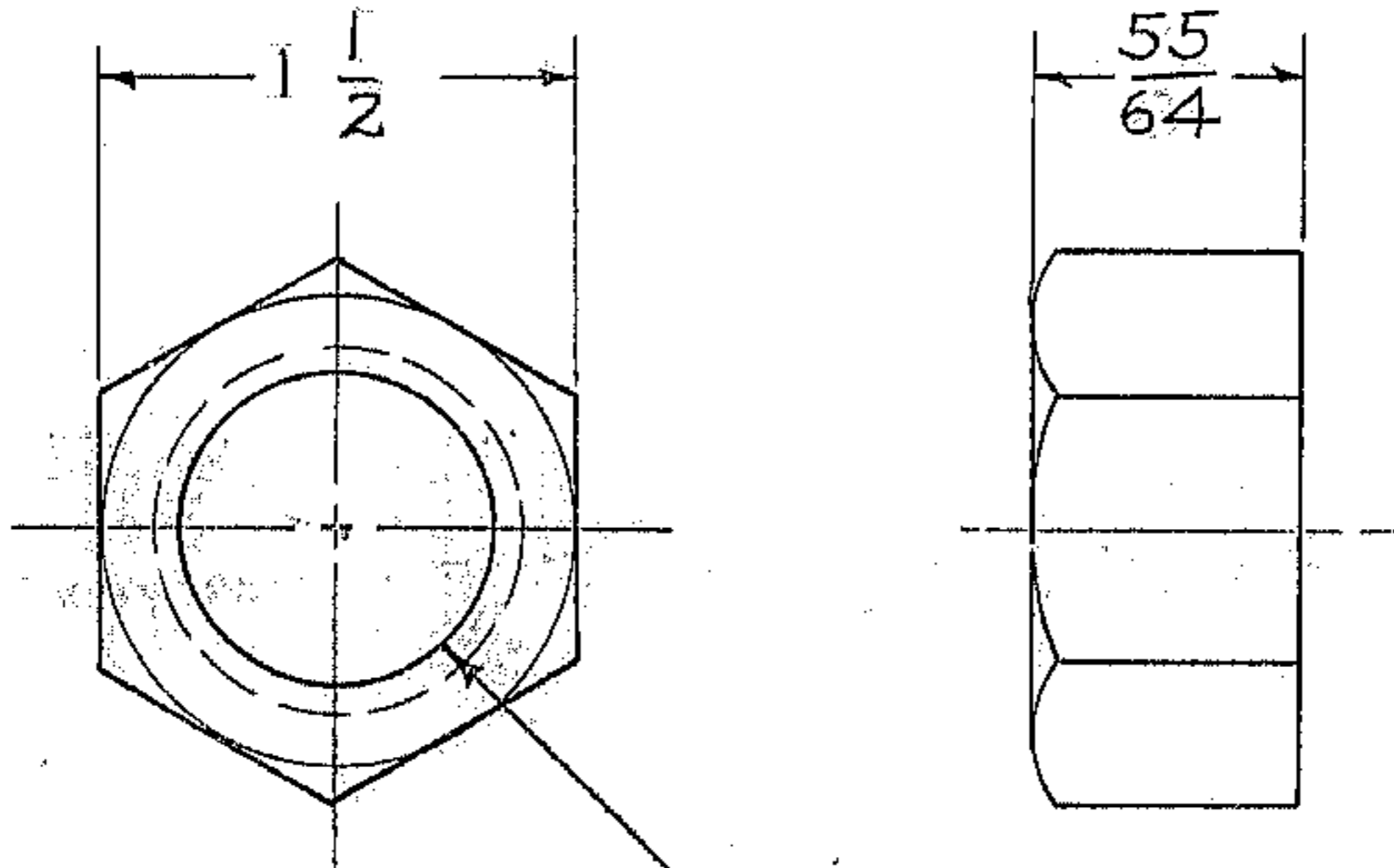


REVISIONS

LTR	DESCRIPTION	DATE	APPROVED
A	REVISED PER AURA REV. 4-3-69	5-7-69	
B	AURA NO. WAS 2150.202A006	19 AUG 69	

NEXT ASSY: 2150.202E002 (WG. N-103026)



REF. FILE 1164

$\frac{7}{8}$ DRILL THRU
1-8N-2 TAP THRU

MAT'L: STL. 1-8N-2 COMMERCIAL NUT

LIMITS ON MACHINED DIMENSIONS EXCEPT AS NOTED

ANGULAR $\pm 1^\circ 0'$
LINEAR
X = $\pm .1$
XX = $\pm .03$
XXX = $\pm .010$
FRACTIONAL $\pm 1/32$

BREAK ALL SHARP EDGES

WESTERN
GEAR CORPORATION

HEAVY MACHINERY DIVISION
EVERETT, WASHINGTON

DRAWN WESTON 2/26/69

CHECK

ENGR *Wingman 3/12*

W.G. B-114.012

APPROVED

NUT
SERRURIER TRUSS ASSY

SIZE A	CODE IDENT. NO. 16603	2150.202A(106)	REV B
------------------	---------------------------------	----------------	-----------------

SCALE FULL WT. .22 LB SHEET 1 OF 1

B114.012