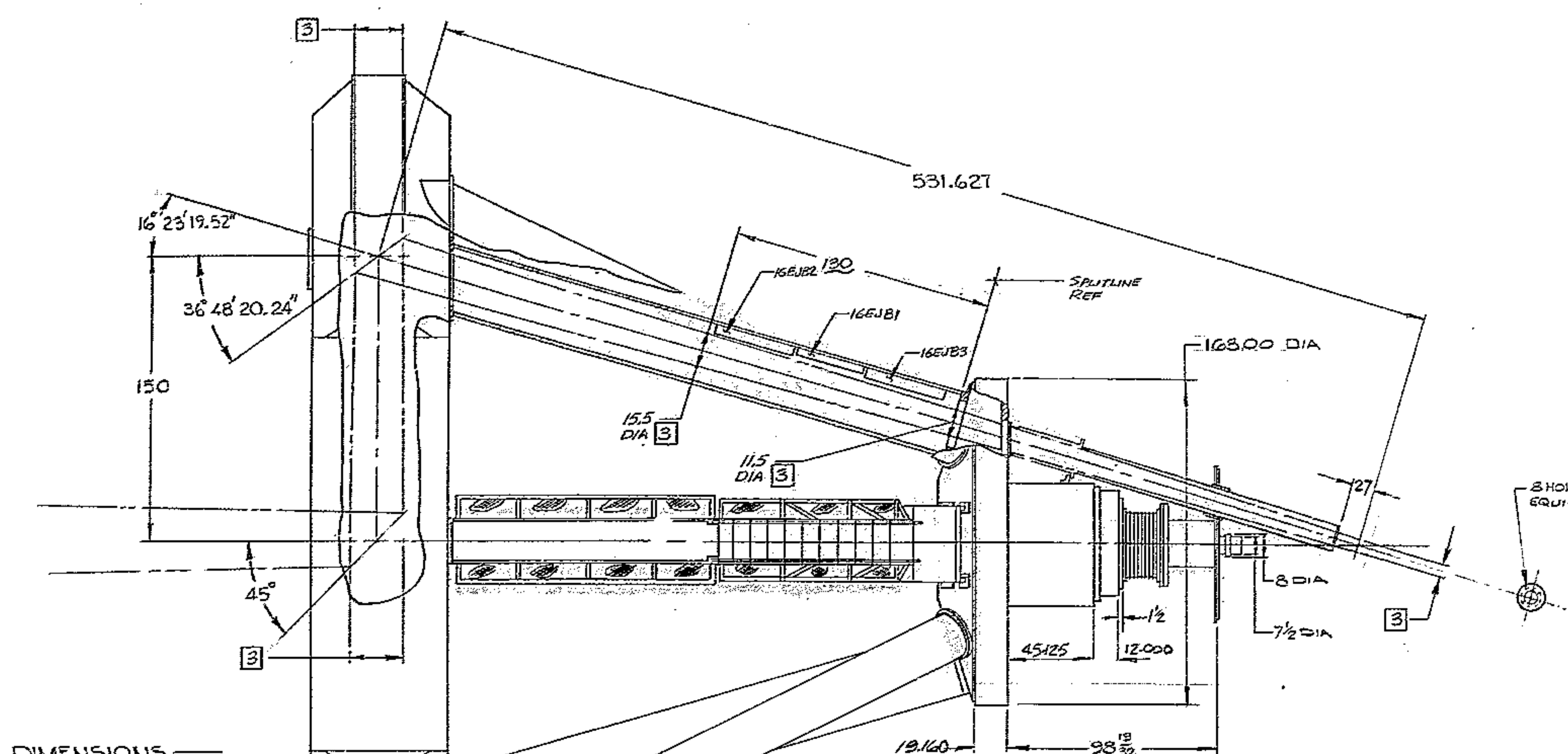
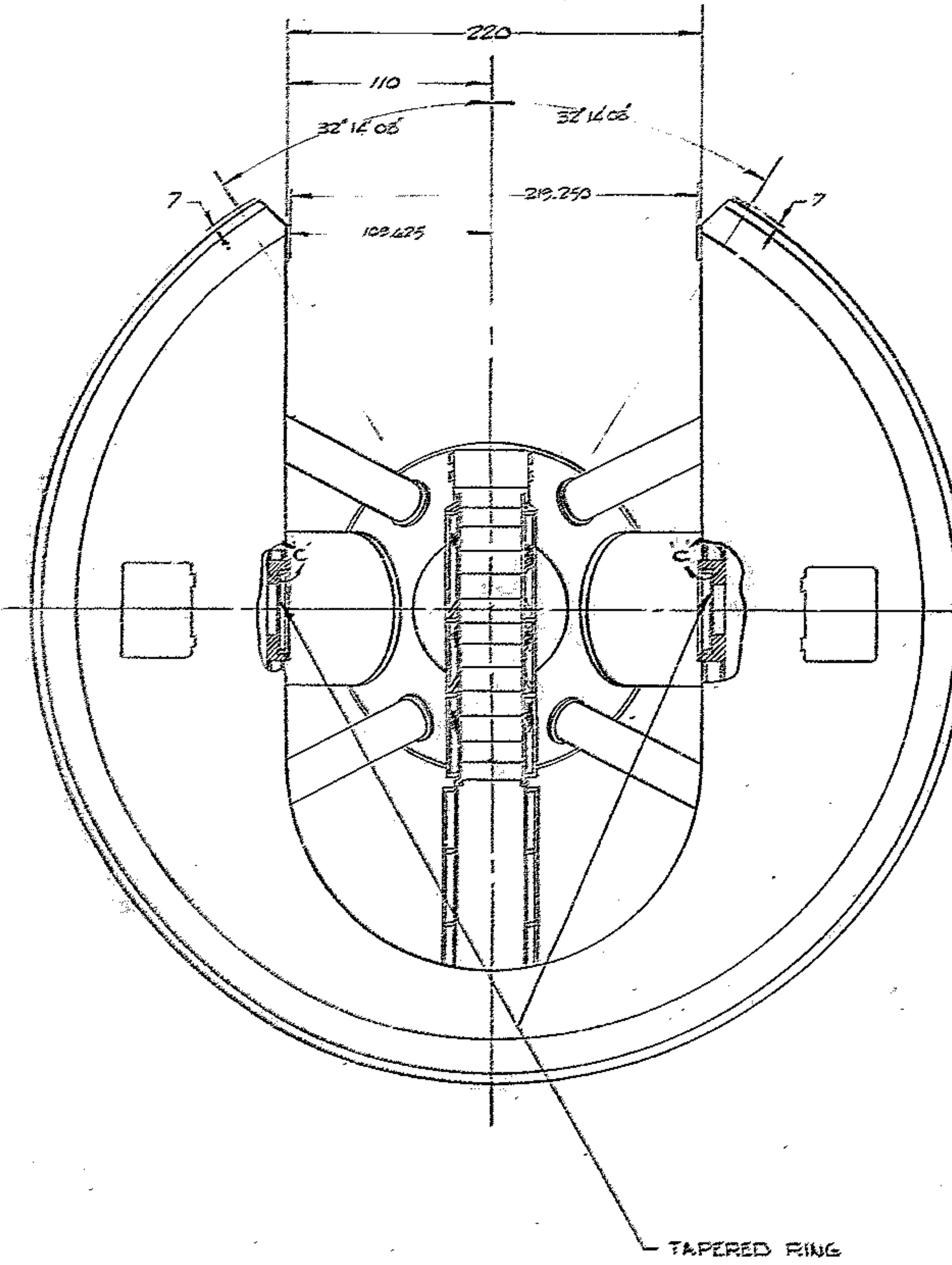


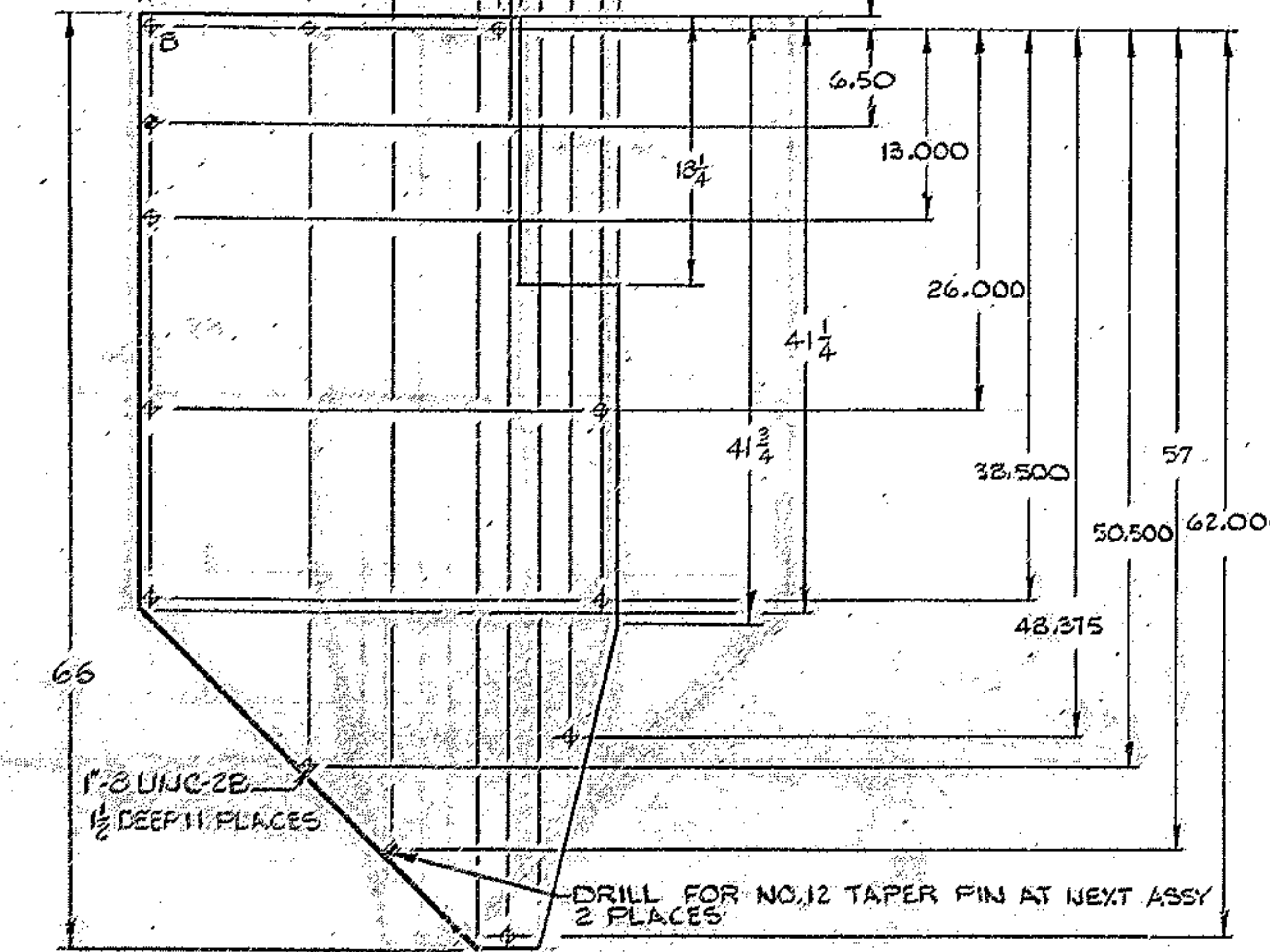
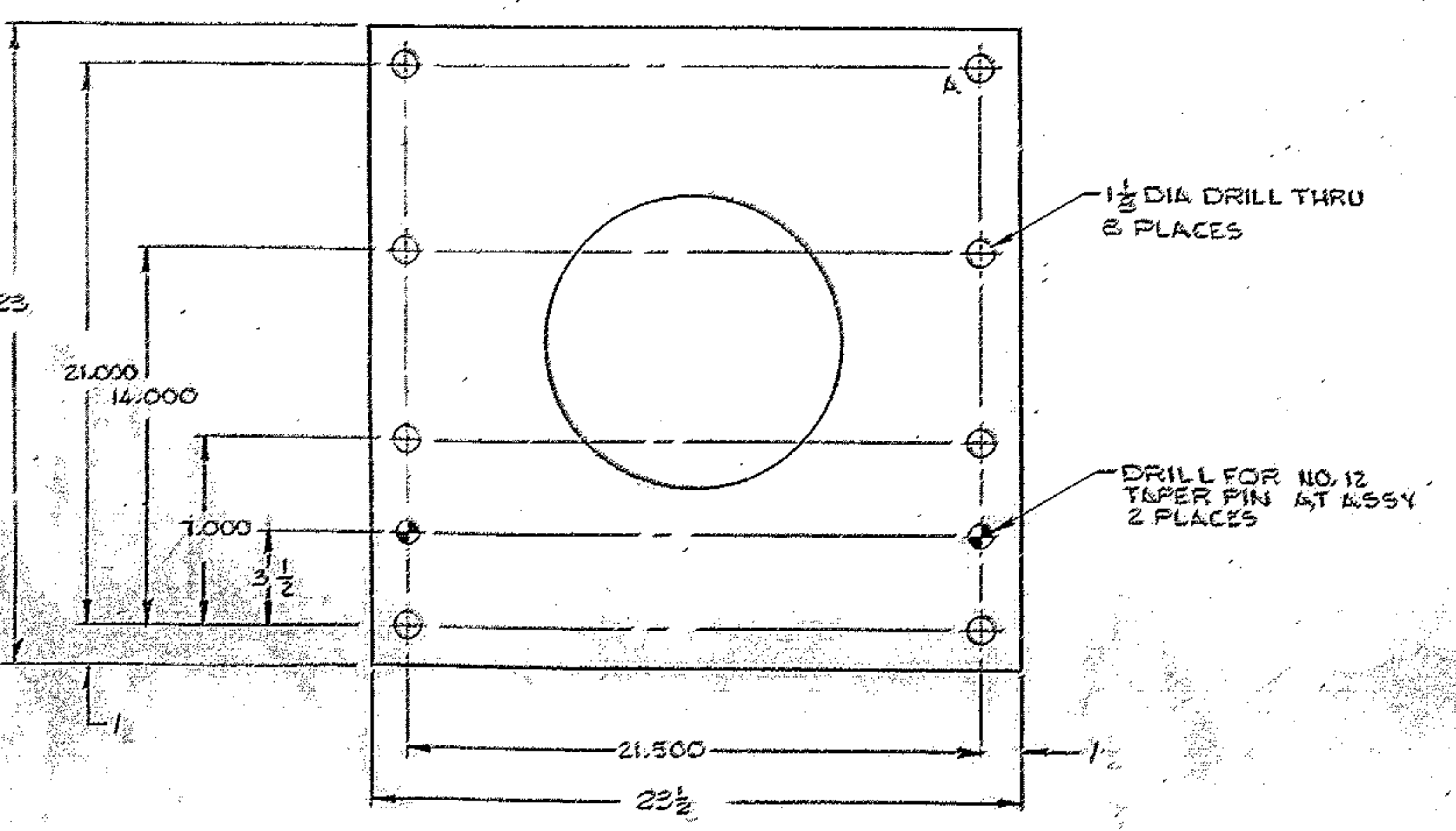
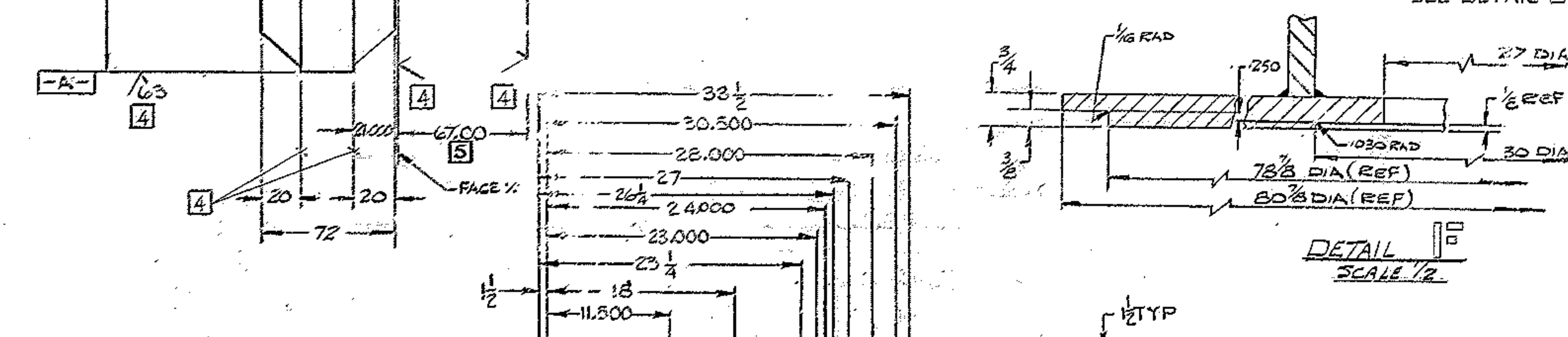
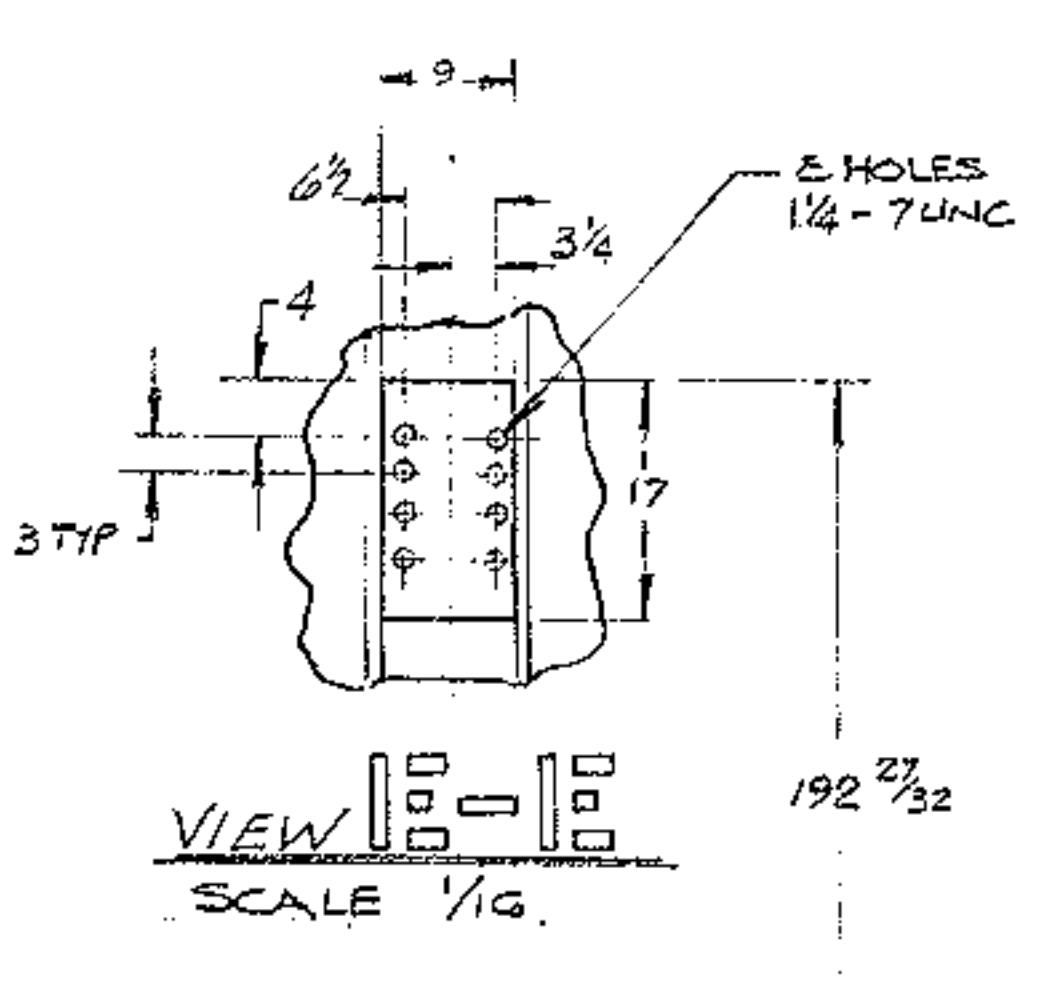
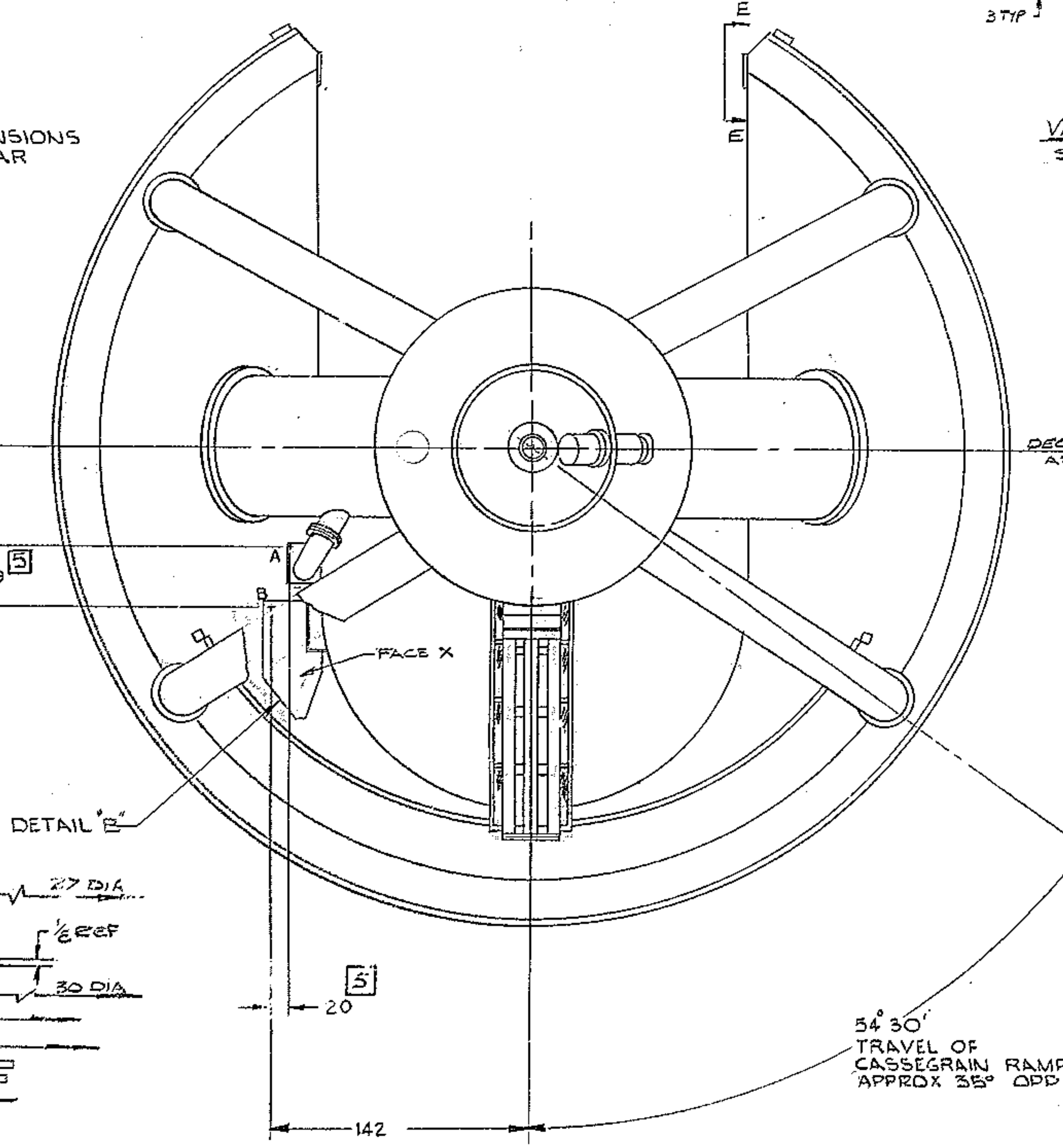
ALL OTHER INTERFACE DIMENSIONS FOR NORTHERN END SEE HORSESHOE OUTLINE DWG NO. 2150.250E001 INCLUDING UNPAINTED SURFACES [4]



ALL OTHER INTERFACE DIMENSIONS FOR SOUTH END SEE POLAR AXLE OUTLINE DWG NO. 2150.210E001 INCLUDING UNPAINTED SURFACES [4]

DECLINATION AXIS [2]

ALL OTHER INTERFACE DIMENSIONS FOR CASSEGRAIN RAMP ON OUTLINE DWG NO. 2150.240E001



- NOTES:
- ALL DIMENSIONS ARE IN INCHES.
 - ALL DIMENSIONS AND DATUM TOLERANCES MARKED [2] APPLY WITH THE HORSESHOE IN PRELOAD CONDITION. 124,000 LB TENSION PRELOAD ACROSS DECLINATION AXIS.
 - THE CONICAL SPACE DEFINED BY THESE DIAMETERS IS TO BE FREE OF INTERFERENCE WITH ANY PORTION OF THE POLAR AXIS ASSY. DIAS DETERMINED FROM OPTICAL DWG.
 - ALL SURFACES TO BE FINISH PAINTED PER W.G.C. SPEC 511 EXCEPT WHERE MARKED THUS [4].
 - THESE DIMS ARE APPROXIMATE. ACTUAL DIMS ARE DETERMINED AT SITE ASSY TO MATCH DECLINATION DRIVE MOUNT PIN 34 ON 2150.004E002 AND 2150.014E002.

WESTERN GEAR CORPORATION
CONSTRUCTION PROJECTS
DEPARTMENT
APPROVED FOR
PROCUREMENT
DATE OCT 13 1969

NEXT ASSY: 2150.014E002 (W.G.N 103040)		NEXT ASSY: 2150.004E002 (W.G.N 102851)		11.03	
FIND NO.	PART NO.	DESCRIPTION	QTY	MATERIAL	CODE IDENT
LIST OF MATERIAL (LMT)					
LIMITS ON MACHINED DIMENSIONS EXCEPT AS NOTED		150 IN. STELLAR TELESCOPE MTG			
ANGULAR = ± 1°		WESTERN GEAR CORPORATION HEAVY MACHINERY DIVISION EVERETT, WASHINGTON			
LINEAR: X = ± .1		DRAWN R. ORR		MAY 68	
Y = ± .1		CHECK G. BALL		SHAW-WALKER	
Z = ± .1		ENGR		POLAR AXIS ASSEMBLY	
FRACTIONAL = ± 1/32		W.G.N 102821		SIZE CODE IDENT NO.	
BREAK ALL SHARP EDGES		APPROVED		E 16603	
MATERIAL		SCALE 3/4" = 1" O.V.T		2150.201E001	
FABRICATION TOLERANCE UP TO 10 INCHES ± 1/16		APPROVED		REV	
10 TO 50 INCHES ± 1/8		SCALE 3/4" = 1" O.V.T		C	
50 IN. AND OVER ± 1/4		LB SHEET 1 OF 1		C	
EXCEPT AS NOTED					