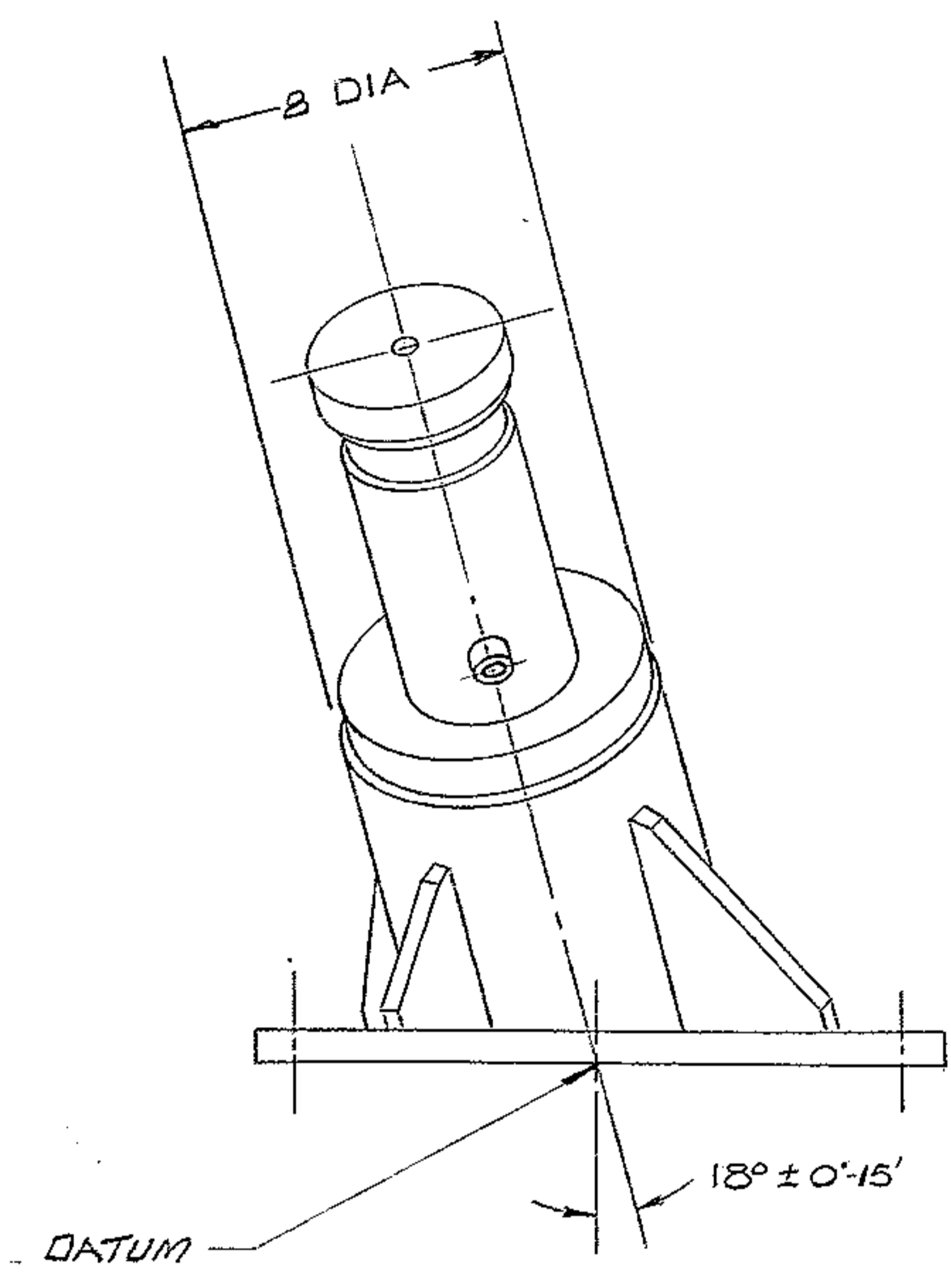
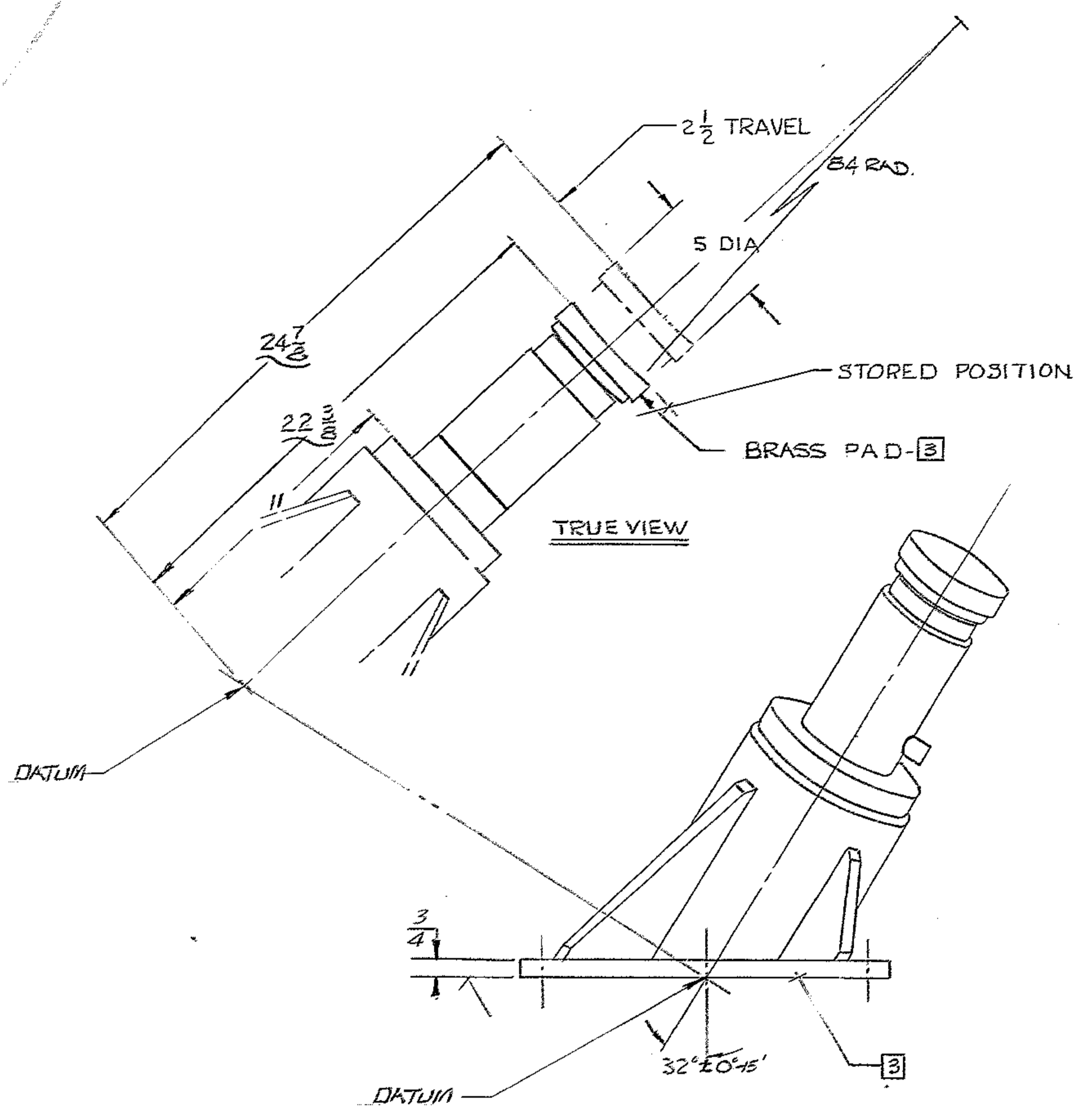
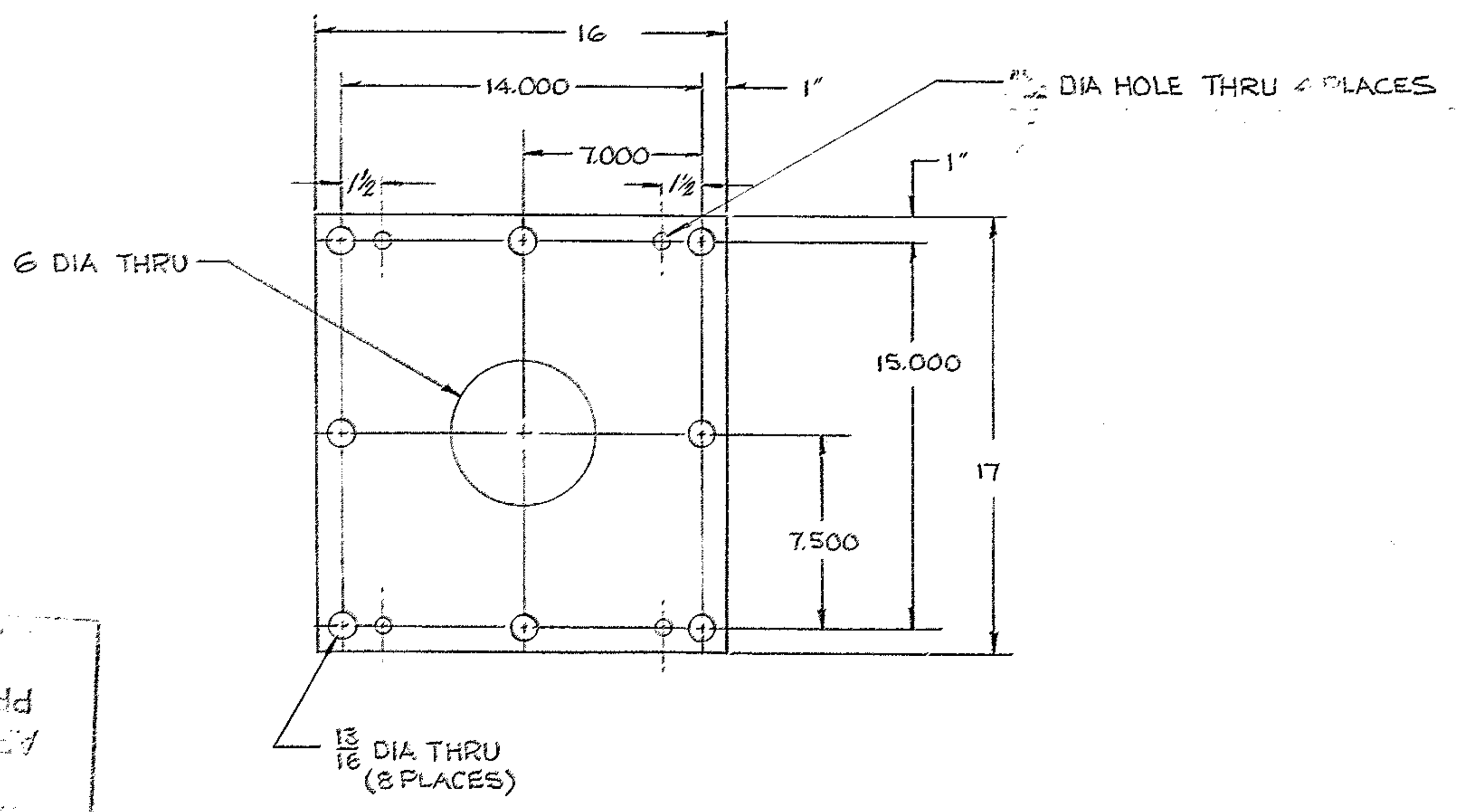


REVISIONS				
ZONE	LTR	DESCRIPTION	DATE	APPROVED
	A	REVISED PER AURA APP PRINT	6/28/68	
1	B	24 1/8 WAS 23.375 & 21 5/8 WAS 20.875	7/24/68	JW
D-8	C	22 3/8 WAS 21 3/8; 24 7/8 WAS 24 1/8	1/6/72	S.T.
	D	DELETED .500 DIA BEAM @ RESY	3/13/73	LDS



- NOTES:
1. ALL DIM. ARE IN INCHES.
 2. JACK CAPACITY 30 TONS @ 3,315 P.S.I.
 3. ALL SURFACES ARE PAINTED WITH 2 COATS OF PRIMER & 2 COATS OF ENAMEL EXCEPT WHERE SHOWN THUS [3]



DATE 5/22/68
 APPROVED FOR
 PROCUREMENT
 WESTERN GEAR CORPORATION

NEXT ASSY 2150.100E001 (W.G.N 102804)
 2150.101E001 (W.G.N 102805)

1162

FIND NO.	PART NO.	DESCRIPTION	QTY	MATERIAL	CODE IDENT
LIST OF MATERIAL (LM)					
LIMITS ON MACHINED DIMENSIONS EXCEPT AS NOTED		150 IN STELLAR TELESCOPE MOUNTING		HEAVY MACHINERY DIVISION EVERETT, WASHINGTON	
ANGULAR = ± 1° 0'		DRAWN R STROM			
LINEAR:		CHECK GENIE RUSSO		OUTLINE, SOUTH JACK ASSY, L.H.	
X = ± .1		ENGR		W.G.E 107688	
.XXX = ± .010				SIZE CODE IDENT NO.	
.XX = ± .03				D 16603	
FRACTIONAL = ± 1/32				2150.190D401	
BREAK ALL SHARP EDGES				REV D	
MATERIAL				SCALE 3'-0" WT 170 LB SHEET 1 OF 1	

FABRICATION TOLERANCE
 UP TO 10 INCHES ± 1/16
 UP TO 50 INCHES ± 1/8
 50 INCHES OR OVER ± 1/4
 EXCEPT AS NOTED.