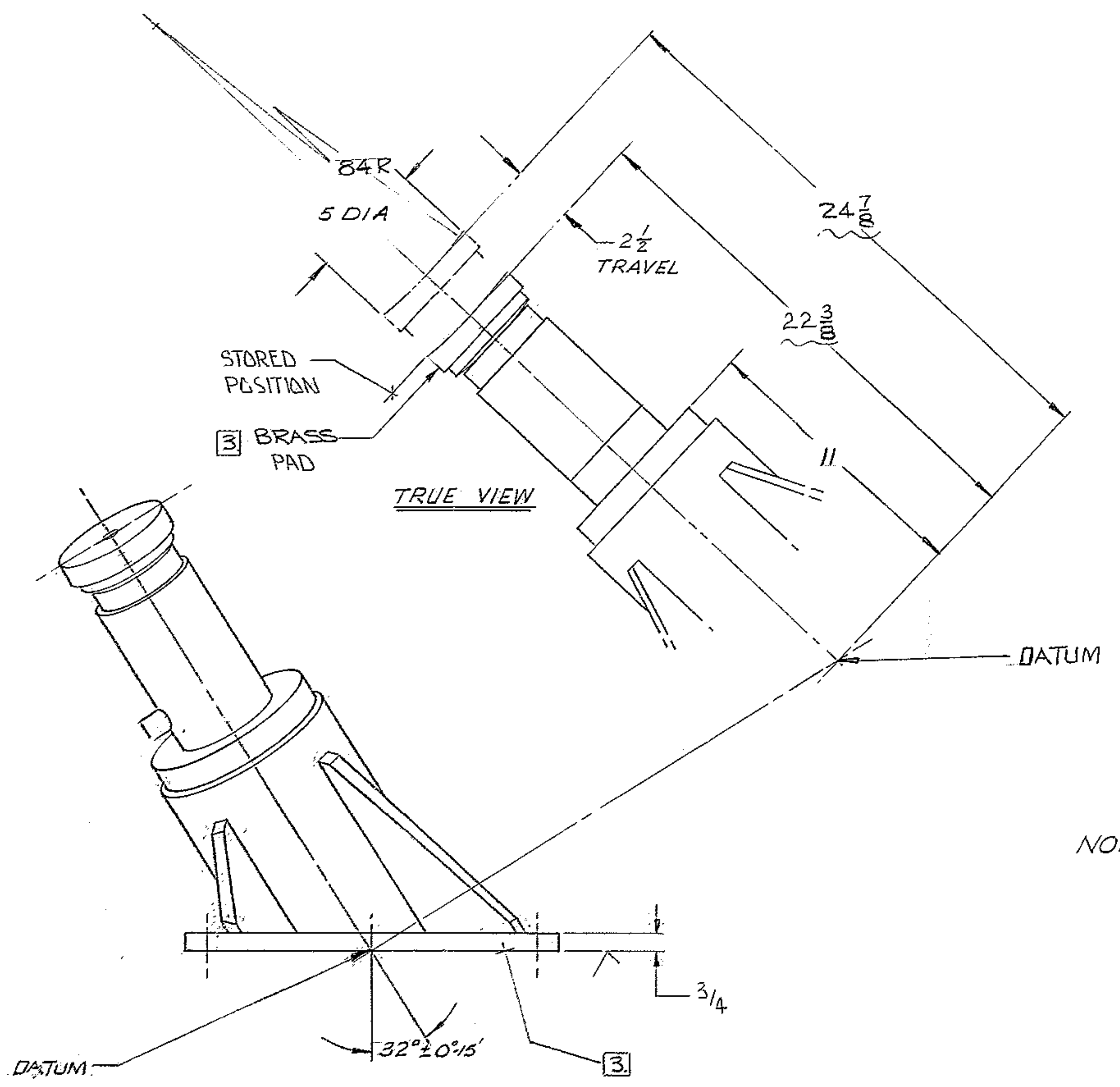
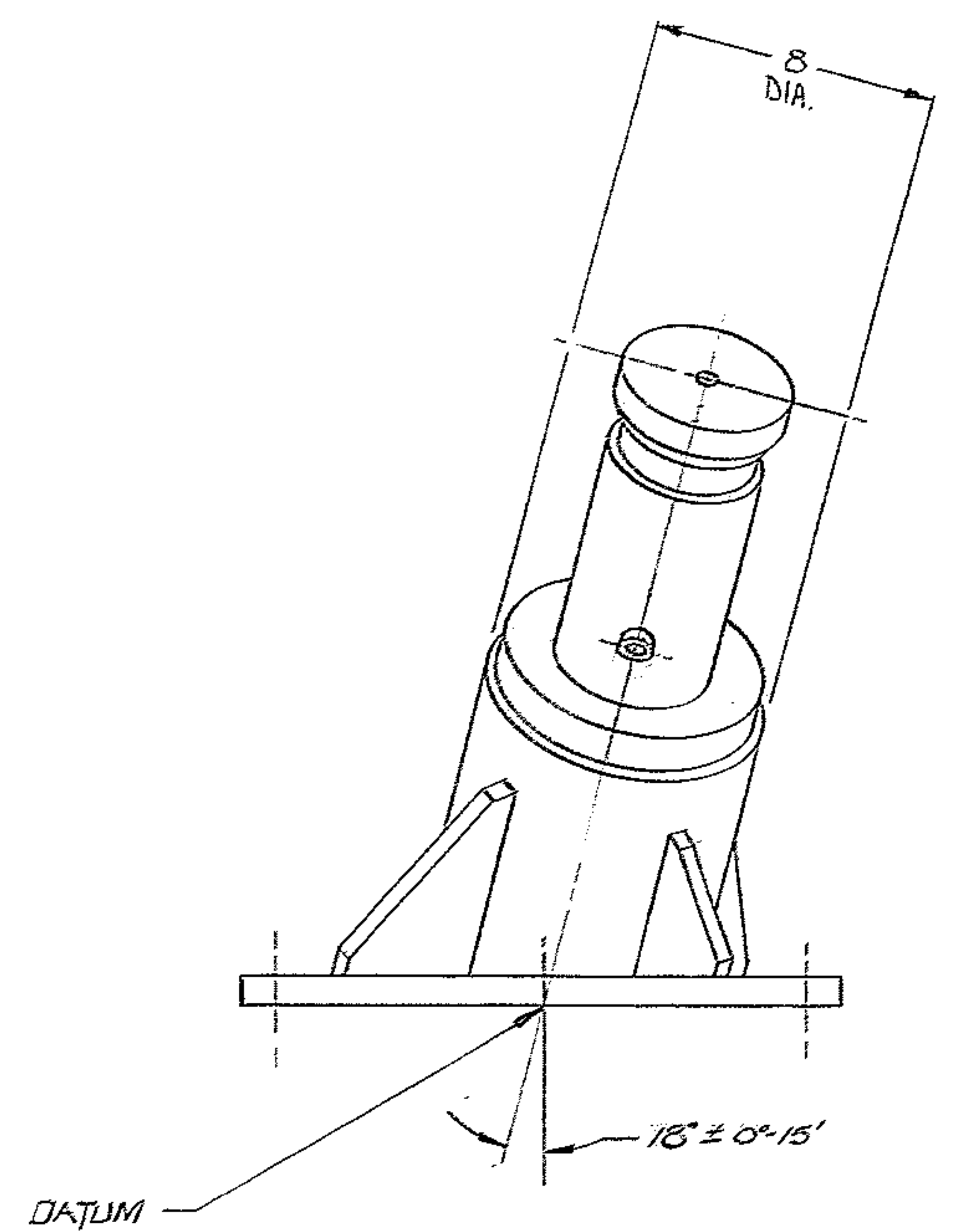
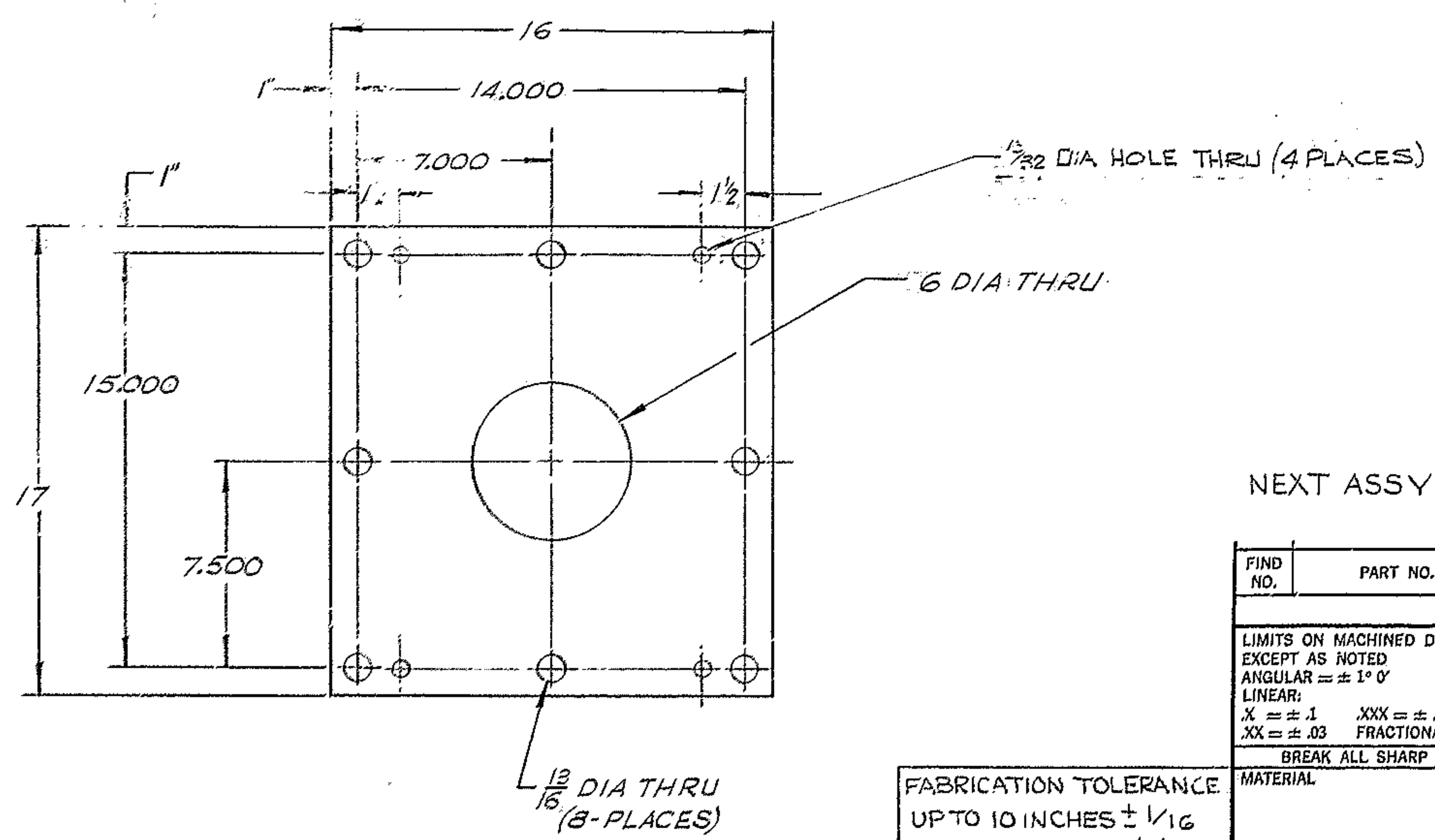


REVISIONS				
ZONE	LTR	DESCRIPTION	DATE	APPROVED
	A	REVISED PER A.J.R.A. APP PRINT	6/23/68	
	B	24 1/8 WAS 23.875 & 21 5/8 WAS 20.875	7/20/71	J.W.
D-3	C	22 3/8 WAS 21 3/8; 24 3/8 WAS 24 1/8	1/6/72	G.T.
	D	DELETED .500 DIA REAM @ ASSY	3/13/73	LDS



NOTE:
 1. ALL DIM ARE IN INCHES.
 2. JACK CAPACITY 30 TONS @ 8,315 PSI.
 3. ALL SURFACES ARE PAINTED WITH 2 COATS OF PRIMER & 2 COATS OF ENAMEL EXCEPT WHERE SHOWN THUS [3].



NEXT ASSY 2150.100E001 (W.G.N 102804)
 2150.101E001 (W.G.N 102805)

1162

FIND NO.	PART NO.	DESCRIPTION	QTY	MATERIAL	CODE IDENT
LIST OF MATERIAL (LM)					
LIMITS ON MACHINED DIMENSIONS EXCEPT AS NOTED		150 LB STELLAR TELESCOPE MOUNTING			
ANGULAR = ± 1° 0'		DRAWN Sperry Brown 3/19/68			
LINEAR:		CHECK GROSS Russo 1 Apr 68			
X = ± .1		ENGR			
.XX = ± .03					
FRACTIONAL = ± 1/32					
BREAK ALL SHARP EDGES					
MATERIAL					
FABRICATION TOLERANCE		western GEAR CORPORATION HEAVY MACHINERY DIVISION EVERETT, WASHINGTON			
UP TO 10 INCHES ± 1/16		OUTLINE SOUTH JACK ASSY R.H.			
UP TO 50 INCHES ± 1/8					
50 INCHES OR OVER ± 1/4					
EXCEPT AS NOTED					
APPROVED		W.G.E 107660		SIZE CODE IDENT NO. REV	
				D 16603 2150.190D 301 D	
		SCALE 3"=1'-0"		WT 170 LB SHEET 1 OF 1	

WESTERN GEAR CORPORATION
 CONSTRUCTION PROJECTS
 DEPARTMENT
 APPROVED FOR
 PROCUREMENT
 DATE 6-22-68