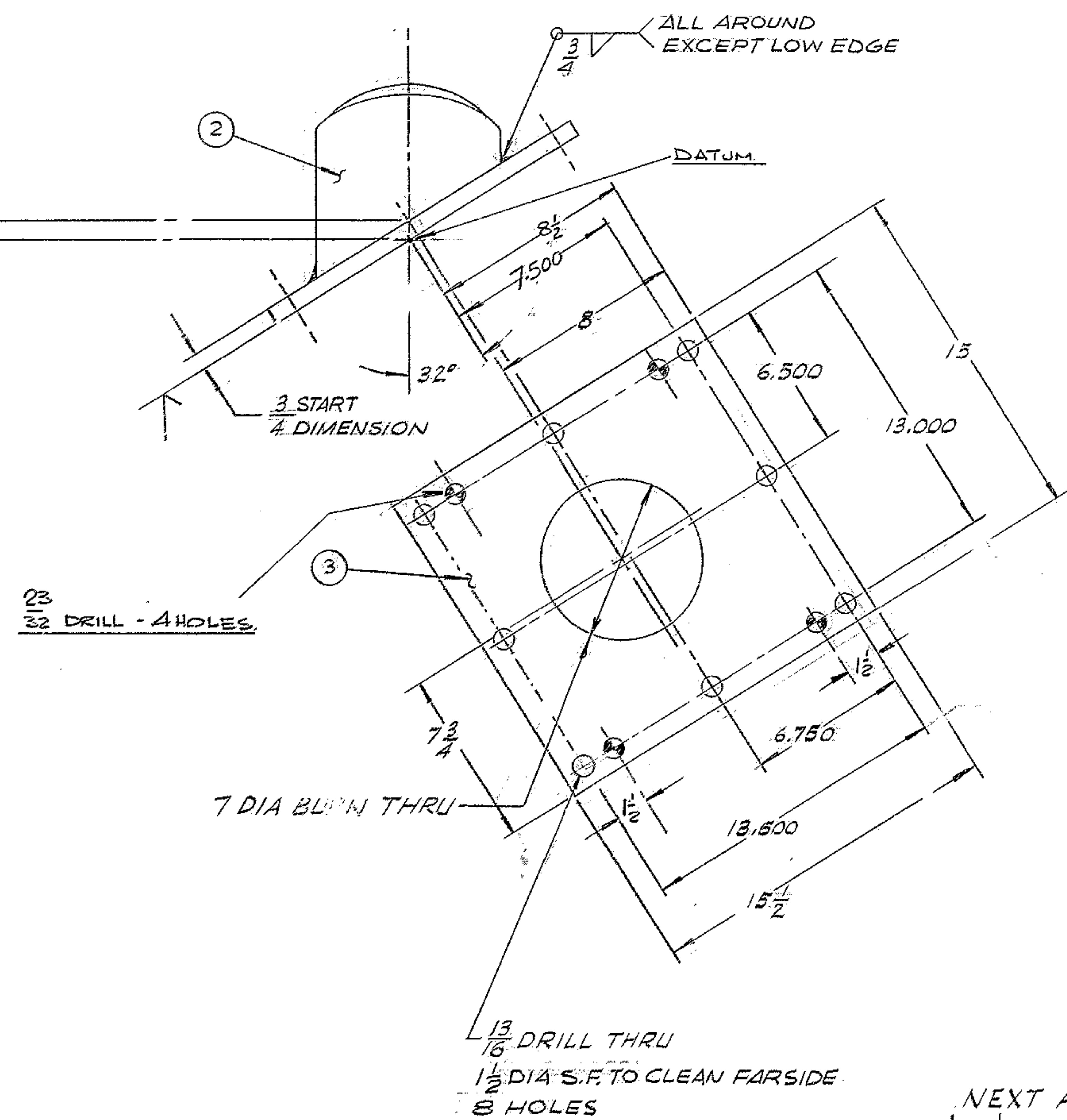
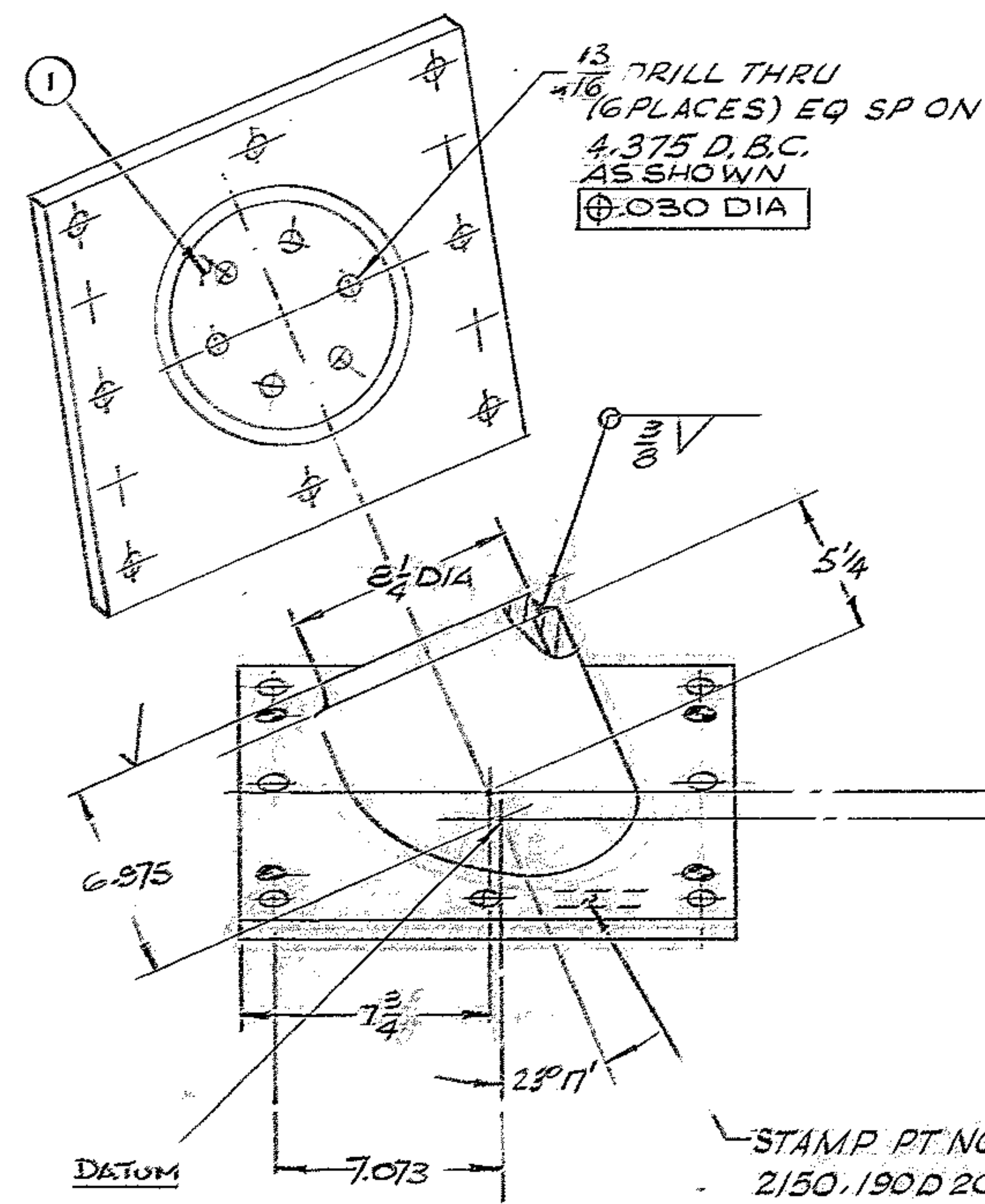


REVISIONS				
ZONE	LTR	DESCRIPTION	DATE	APPROVED
	A	REVISED PER AREA APP. PRINT	6-22-68	
	B	ADDED BVZ DIM	7/18/73	LCS

MATERIAL LIST				
PC. NO.	QTY	DESCRIPTION	MAT'L & SPEC	ROUGH WT
1	1	12.8 1/2 DIA X 1" THK	ST'L ASTM A-36	15
2	1	T86 3/8 O.D. X 3/4 W X 8	ST'L A.S.I. M1015	44
3	1	R. 15 X 1" X 15 1/2	ST'L ASTM A-36	66



- NOTES:
- FABRICATION TOLERANCES EXCEPT AS NOTED  
UP TO 10 INCHES  $\pm 1/16$   
UP TO 50 INCHES  $\pm 1/8$   
50 INCHES OR OVER  $\pm 1/4$
  - WELD PER W.G.C. SPEC. 752 APPENDIX T1
  - STRESS RELIEVE AFTER WELDING & BEFORE MACHINING PER W.G.C. SPEC. 510.
  - APPLY ONE COAT OF PRIME PAINT ALL OVER PER W.G.C. SPEC. 511 IMMEDIATELY AFTER STRESS RELIEVING & CLEANING.
  - ALL SURFACES MARKED  $\checkmark$  TO BE  $\sqrt{}$  EXCEPT AS NOTED.
  - ALL DIM ARE IN INCHES.
  - MAGNAFLUX INSPECT ALL WELDS.

NEXT ASS'Y: 2150.190 C 202 (W.G.D 107476)

REF. 1162

FIND NO.	PART NO.	DESCRIPTION	QTY	MATERIAL	CODE IDENT
LIST OF MATERIAL (LM)					
LIMITS ON MACHINED DIMENSIONS EXCEPT AS NOTED ANGULAR = $\pm 1^\circ 0'$ LINEAR: X = $\pm .1$ XXX = $\pm .010$ XX = $\pm .03$ FRACTIONAL = $\pm 1/32$		150 <sup>th</sup> STELLAR TELESCOPE MOUNTING		WESTERN GEAR CORPORATION HEAVY MACHINERY DIVISION EVERETT, WASHINGTON	
DRAWN: [Signature] 4-16-68 CHECK: [Signature] 4-25-68 ENGR		NORTH JACK BASE LH. BASE FRAME		SIZE: WG. 107724 CODE IDENT NO.: 2150.190 D 203 REV: B	
MATERIAL: SEE MAT'L LIST		APPROVED		SCALE: 1/4    WT: 100    LB SHEET: / OF: /	

WESTERN GEAR CORPORATION  
CONSTRUCTION DEPT.  
APPROVED FOR  
PROCUREMENT  
DATE: 6-12-68