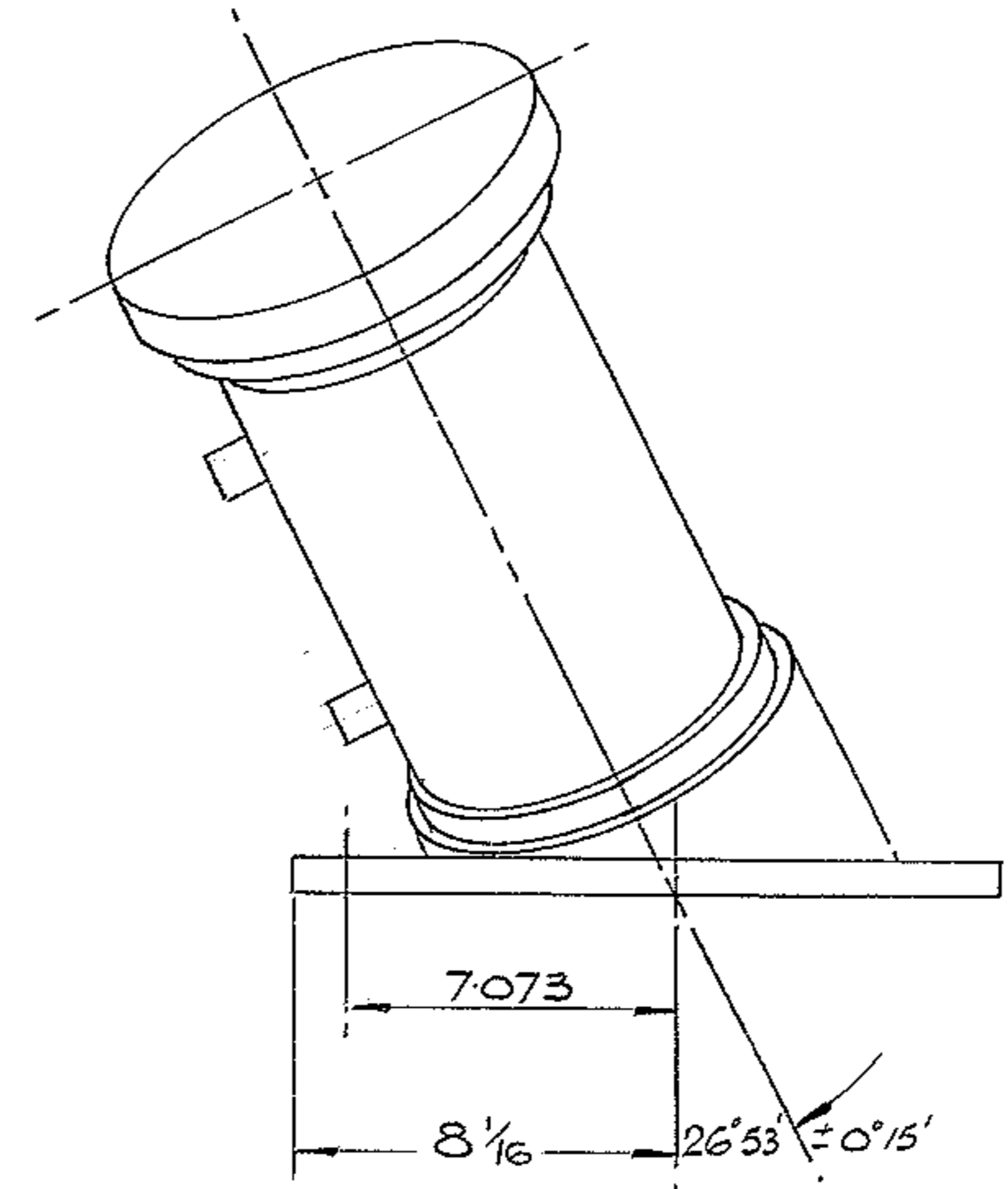
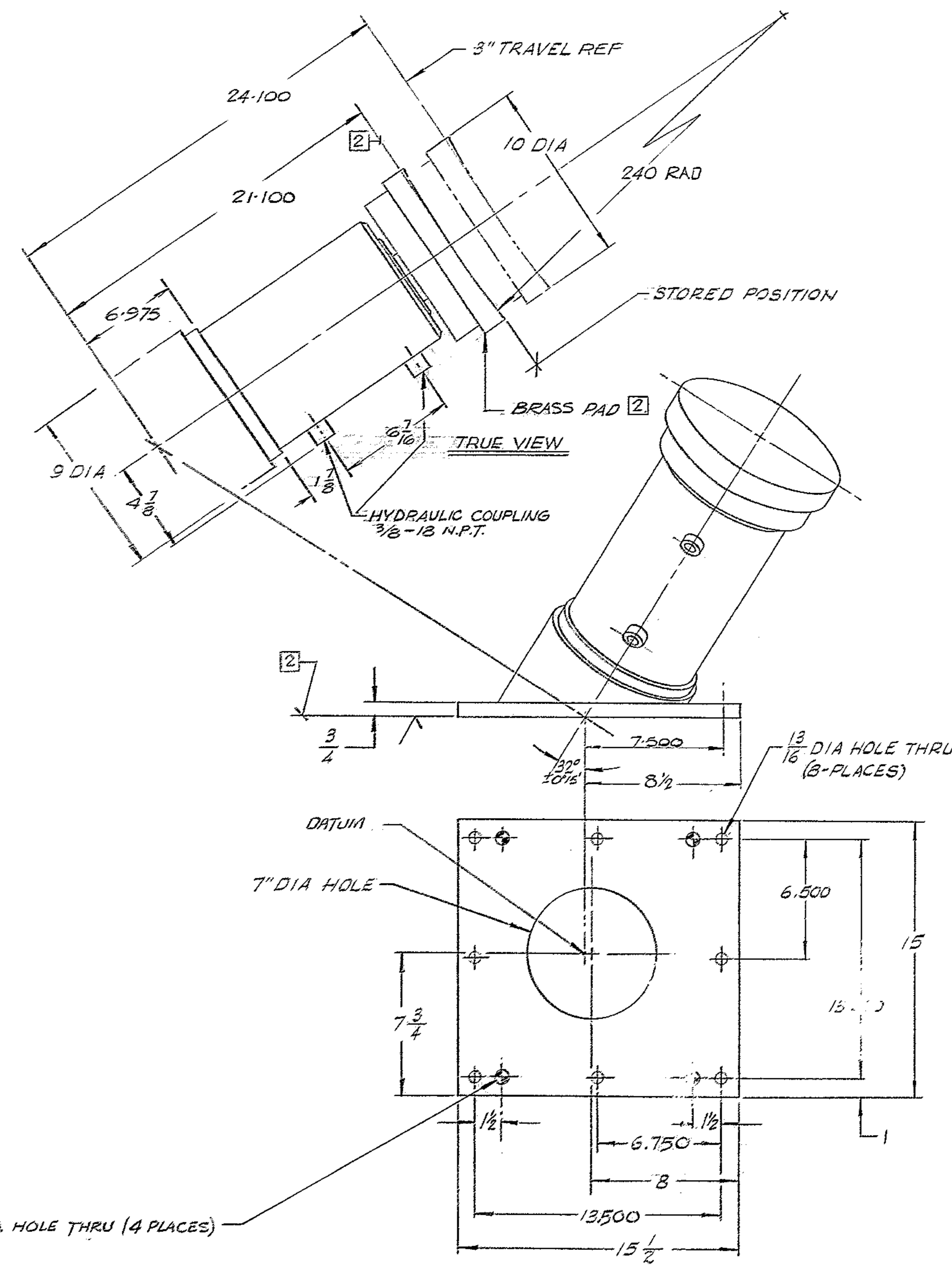
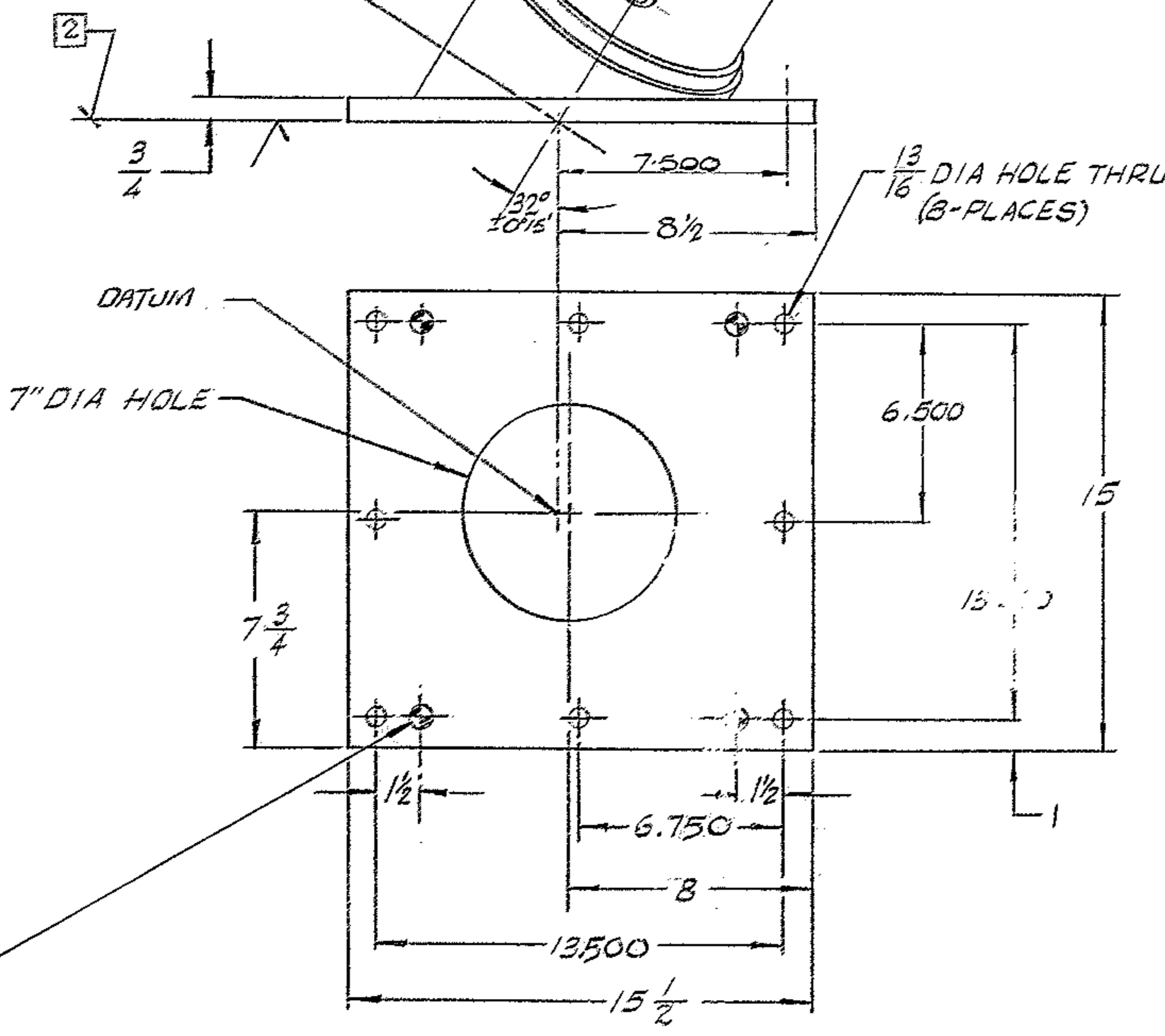


REVISIONS				
ZONE	LTR	DESCRIPTION	DATE	APPROVED
	A	REVISED PER AURA APP PRINT	6/22/61	
	B	DELETED .750 REAM @ ASSY	3/13/73	



- NOTES:
1. ALL DIMENSION ARE IN INCHES.
  2. FINISH PAINTED ALL OVER EXCEPT SURFACES MARKED 2
  3. JACK CAPACITY = 150 TON @ 10,600 P.S.I.



NEXT ASS'Y: 2150.100 E 001 (W.G.N 102804)  
 2150.101 E 001 (W.G.N 102805)

FILE # 1162

FIND NO.	PART NO.	DESCRIPTION	QTY	MATERIAL	CODE IDENT
LIST OF MATERIAL (LM)					
LIMITS ON MACHINED DIMENSIONS EXCEPT AS NOTED		150 <sup>th</sup> STELLAR TELESCOPE MOUNTING			
ANGULAR = ± 1° 0'		DRAWN S. Brown 419-68			
LINEAR:		CHECKED [Signature] 426-68			
X = ± .1    XXX = ± .010		ENGR			
XX = ± .03    FRACTIONAL = ± 1/32		W.G.E 107726			
BREAK ALL SHARP EDGES		APPROVED			
MATERIAL		SIZE		CODE IDENT NO.	
		D 16603		2150.190 D 101	
		SCALE 3" = 1' 0" WT 121		REV B	

FABRICATION TOLERANCES  
 UP TO .10 INCHES ± 1/16  
 UP TO .50 INCHES ± 1/8  
 .50 INCHES AND OVER ± 1/4  
 EXCEPT AS NOTED

WESTERN GEAR CORPORATION  
 CONSTRUCTION PROJECTS  
 APPROVED FOR  
 PROCUREMENT  
 DATE 6-22-68

WESTERN GEAR CORPORATION  
 HEAVY MACHINERY DIVISION  
 EVERETT, WASHINGTON  
 OUTLINE,  
 JACK, NORTH A.M.