

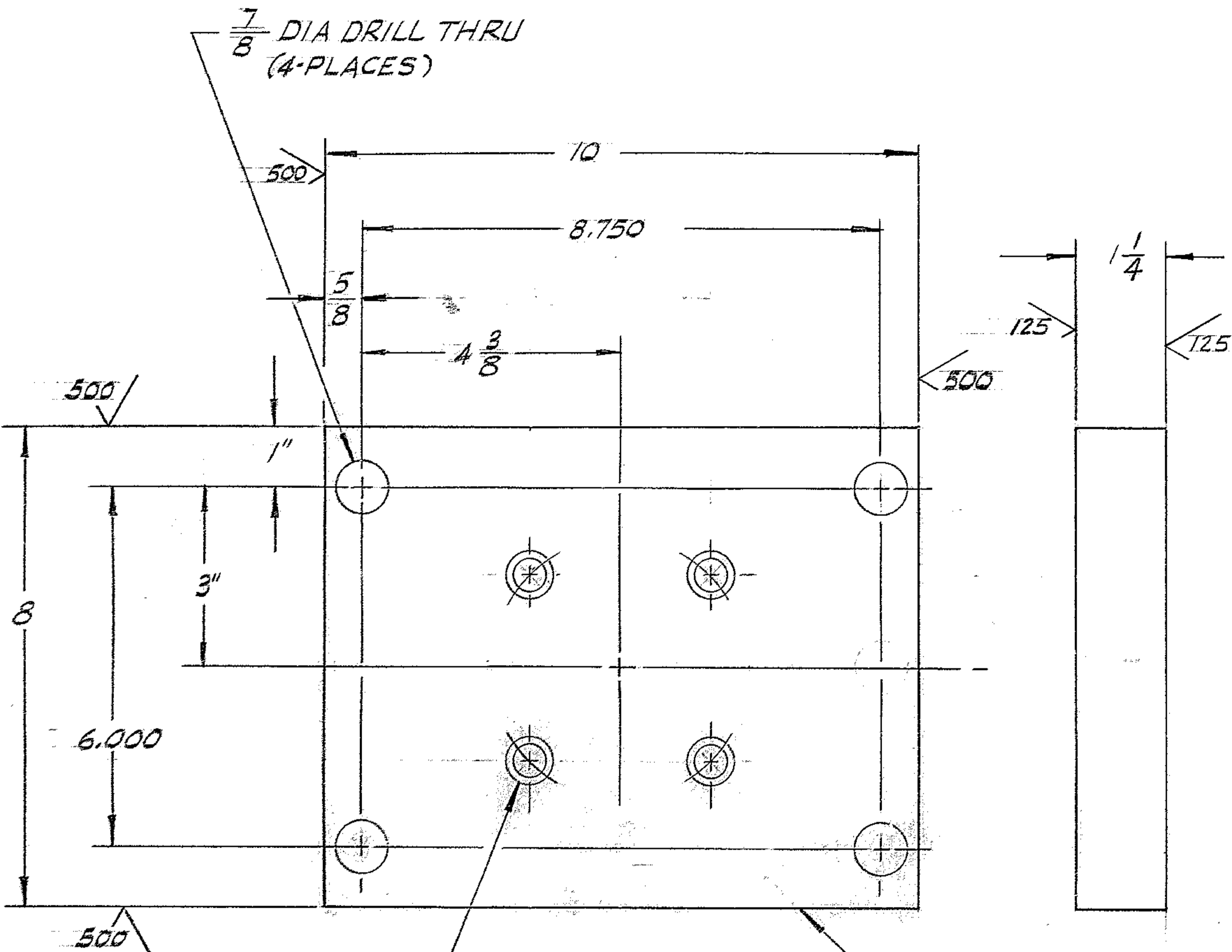
4

3

2

1

REVISIONS				
ZONE	LTR	DESCRIPTION	DATE	APPROVED
	A	REVISED PER A.U.R.A. APP PRINT	6/22/68	



NOTES
 1. DIMENSIONS ARE IN INCHES
 2. APPLY ONE COAT OF PRIME PAINT ALL OVER AFTER CLEANING AND BEFORE MACHINING PER WGC SPEC # 511.

9/16 DIA DRILL THRU 1/16 CBORE 1" DIA x 3/4 DEEP (4 PLACES) EQ. SP. AS SHOWN ON 4.375 D.B.C.
 .030 DIA
 STAMP PT # 2150.190C505 ON EDGE

REF. FILE 1162

NEXT ASSY: 2150.190C 502 (W.G.D 107467)

FIND NO.	PART NO.	DESCRIPTION	QTY	MATERIAL	CODE IDENT
LIST OF MATERIAL (LM)					
LIMITS ON MACHINED DIMENSIONS EXCEPT AS NOTED ANGULAR = ± 1° 0' LINEAR: X = ± .1 .XXX = ± .010 .XX = ± .03 FRACTIONAL = ± 1/32		150 ^{LM} STELLAR TELESCOPE MOUNTING		WESTERN GEAR CORPORATION HEAVY MACHINERY DIVISION EVERETT, WASHINGTON	
DRAWN <i>Gene Russo</i> 4.11.68 CHECK <i>Gene Russo</i> 24 APR 68 ENGR		MOUNT PLATE, THRUST JACK		MATERIAL	
MATERIAL ST'L ASTM A-7 or EQUIV PL 8 x 1 1/2 x 10		W.G.D 107466		SIZE	CODE IDENT NO.
APPROVED		C 16603		2150.190C505	REV A
SCALE 1/2		WT 28		LB SHEET 1 OF 1	

WESTERN GEAR CORPORATION
 CONSTRUCTION PROJECTS
 DEPARTMENT
 APPROVED FOR
 PROCUREMENT
 DATE 6-22-68