

4

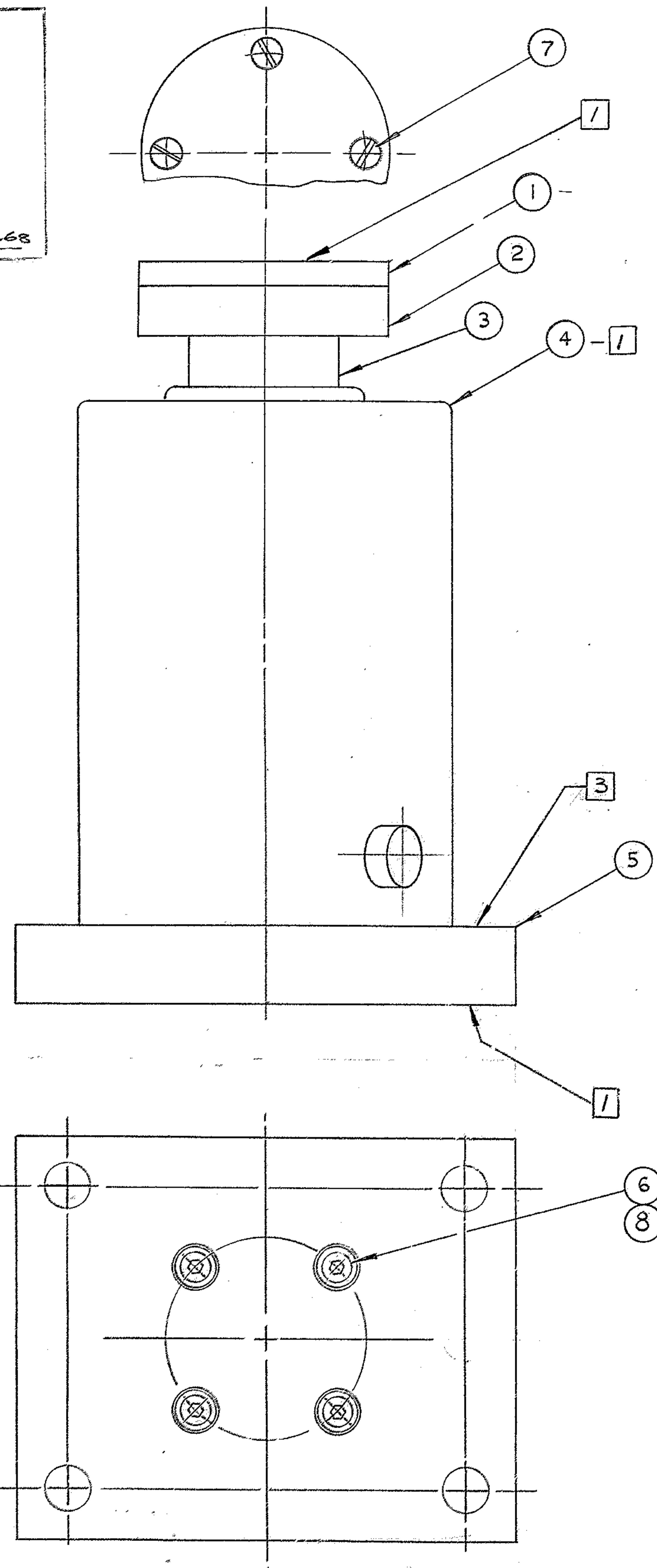
3

2

1

WESTERN GEAR CORPORATION  
 CONSTRUCTION PROJECTS  
 DEPARTMENT  
 APPROVED FOR  
 PROCUREMENT  
 DATE 6-22-68

REVISIONS				
ZONE	LTR	DESCRIPTION	DATE	APPROVED
	A	REVISED PER A.U.R.A. APP PRINT.	6/22/68	



NOTES

- 1. APPLY SECOND COAT OF PRIME PAINT AND 2 COATS OF FINISH ENAMEL ALL OVER PER WGC SPEC # 511
- 2. PROTECT ALL UNPAINTED SURFACES WITH RUST PREVENTATIVE COMPOUND, BRAYCOTE PI NO. 103 BEFORE SHIPPING
- 3. MARK ASSY NO 2150.190C 502

SEE B/M: 2150.190A502 (W.G.N 112946)  
 NEXT ASSY: 2150.100E 002 (W.G.N 102845)  
 2150.101E 002 (W.G.N 102846)

REF 1162

FIND NO.	PART NO.	DESCRIPTION	QTY	MATERIAL	CODE IDENT
LIST OF MATERIAL (LM)					
LIMITS ON MACHINED DIMENSIONS EXCEPT AS NOTED ANGULAR = ± 1° 0'		150 W STELLAR TELESCOPE MOUNTING		<b>Western GEAR CORPORATION</b> HEAVY MACHINERY DIVISION EVERETT, WASHINGTON	
LINEAR: X = ± .1     .XXX = ± .010 .XX = ± .03     FRACTIONAL = ± 1/32		DRAWN <i>J. Spohn</i> 4-11-68 CHECK <i>W. McLaughlin</i> 4-26-68 ENGR		THRUST JACK ASSY - BASE	
BREAK ALL SHARP EDGES		W.G.D 107467		SIZE C	CODE IDENT NO. 2150.190C 502
MATERIAL		APPROVED		REV A	
		SCALE 1/2		WT 138	LB SHEET 1 OF 1