

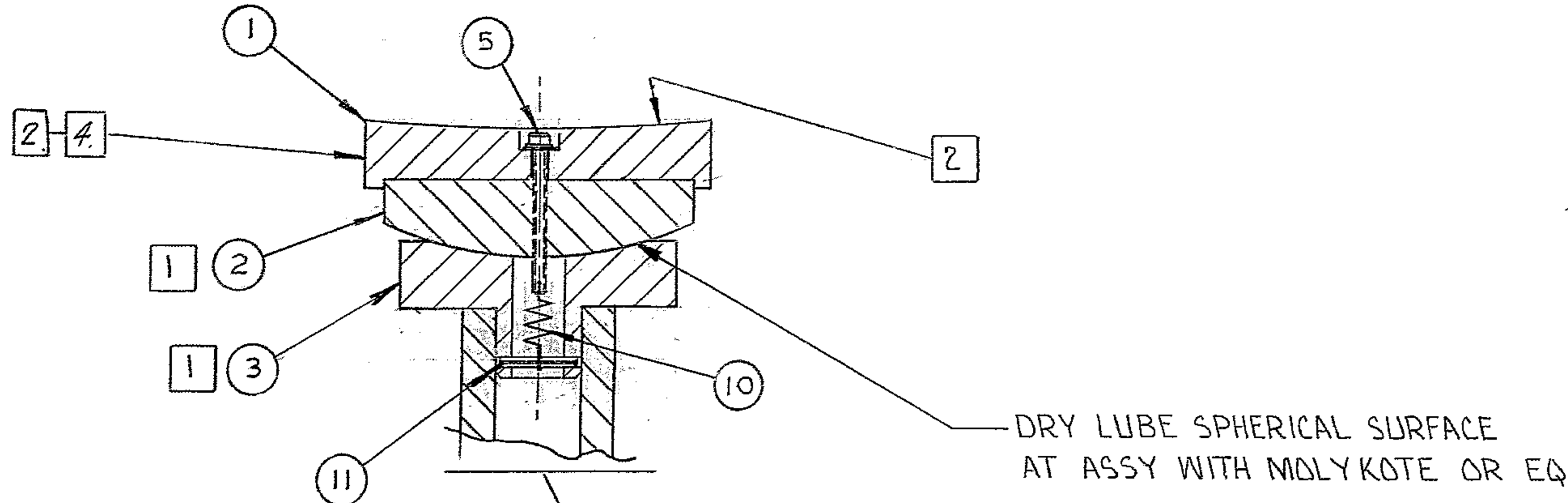
4

3

2

1

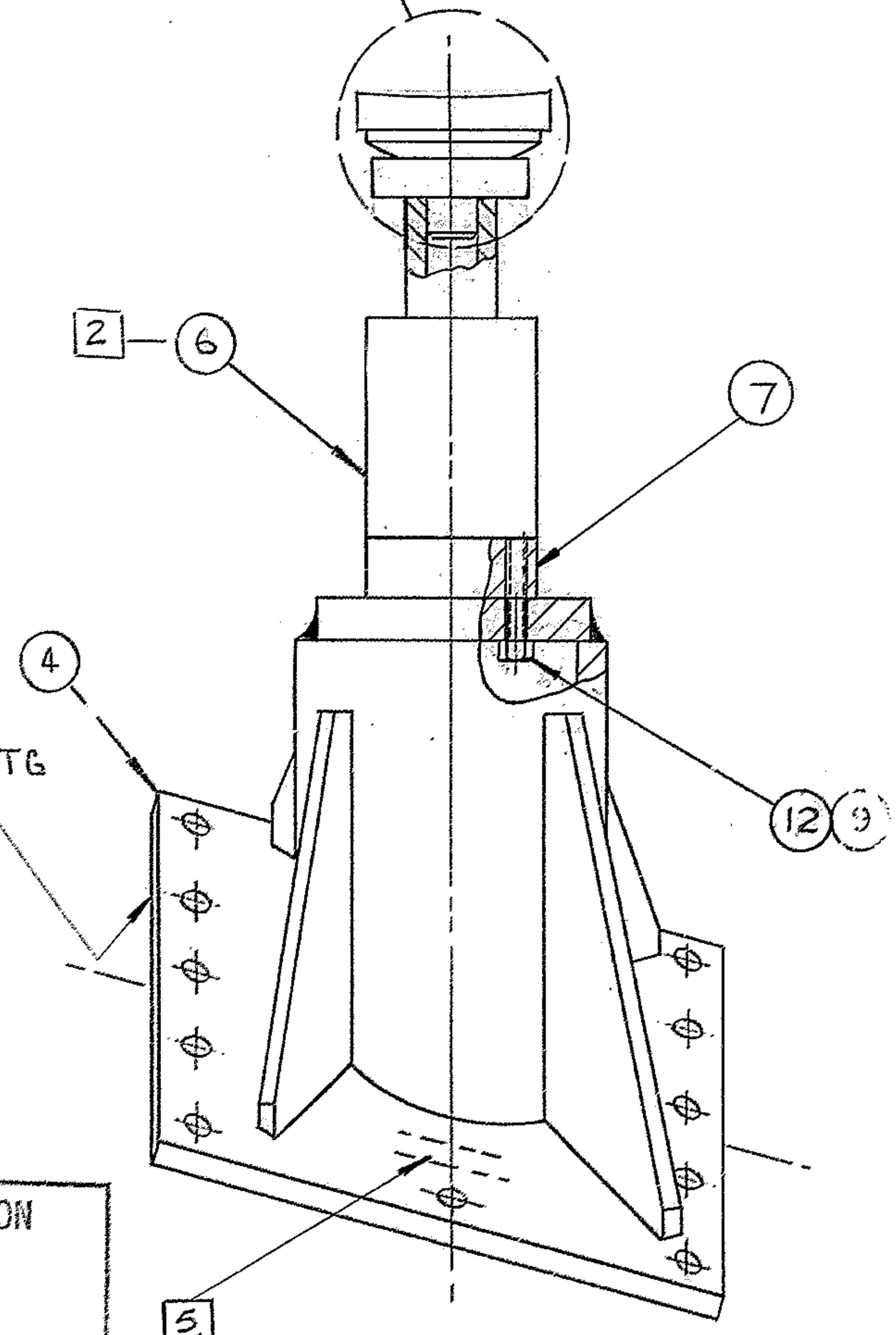
REVISIONS				
ZONE	LTR	DESCRIPTION	DATE	APPROVED
	A	REVISED PER A.J.R.A. APP PRINT	6/22/68	
C4	B	ADDED SPACER P/N 7	7/26/71	JW
B-3	C	RELOCATED F/N 7	1/5/72	G.T.



DRY LUBE SPHERICAL SURFACE
AT ASSY WITH MOLYKOTE OR EQ

NOTES :

- 1. LAP ITEMS 2 AND 3 TOGETHER AT ASSY FOR 75% MIN CONTACT AREA. RECORD BY SKETCH OR PHOTOGRAPH. MATCH MARK ITEMS NO. 2 AND 3 FOR EACH ASSEMBLY
- 2. APPLY SECOND COAT OF PRIMER PAINT & 2 COATS OF FINISH ENAMEL ALL OVER PER WGC SPEC # 511 EXCEPT WHERE MARKED 2
- 3. PROTECT ALL UNPAINTED SURFACES (EXCEPT ITEM 1) WITH RUST PREVENTATIVE COMPOUND, BRAYCOTE PI NO. 103 BEFORE SHIPPING
- 4. MARK WITH LABEL OR PAINT "IMPORTANT ROTATE CAP TO MATE WITH BEARINGS SURFACE"
- 5. MARK ASSY NO 2150.190 402



2 BOTTOM MTG SURFACE

SEE B/M : 2150.190A402 (W.G. C 112930)
2150.100E 002 (W.G.N 102845)
NEXT ASS'Y 2150.101E002 (W.G.N 102846)

REF. FILE 1162

WESTERN GEAR CORPORATION
CONSTRUCTION PROJECTS
DEPARTMENT
APPROVED FOR
PROCUREMENT
DATE 4-22-68

FIND NO.	PART NO.	DESCRIPTION	QTY	MATERIAL	CODE IDENT
LIST OF MATERIAL (LM)					
LIMITS ON MACHINED DIMENSIONS EXCEPT AS NOTED ANGULAR = ± 1° 0'		150 ^{LB} STELLAR TELESCOPE MOUNTING		WESTERN GEAR CORPORATION HEAVY MACHINERY DIVISION EVERETT, WASHINGTON	
LINEAR: X = ± .1 .XXX = ± .010 .XX = ± .03 FRACTIONAL = ± 1/32		DRAWN <i>Johnny Brown</i> 3-18-68 CHECK <i>Gene Russo</i> 1 APR 68		SOUTH JACK ASSY, L.H.	
BREAK ALL SHARP EDGES		ENGR			
MATERIAL		W.G.D 107419		SIZE	CODE IDENT NO.
		APPROVED		C	16603
				2150.190C 402	REV C
				SCALE 1/4	WT 155 LB SHEET 1 OF 1