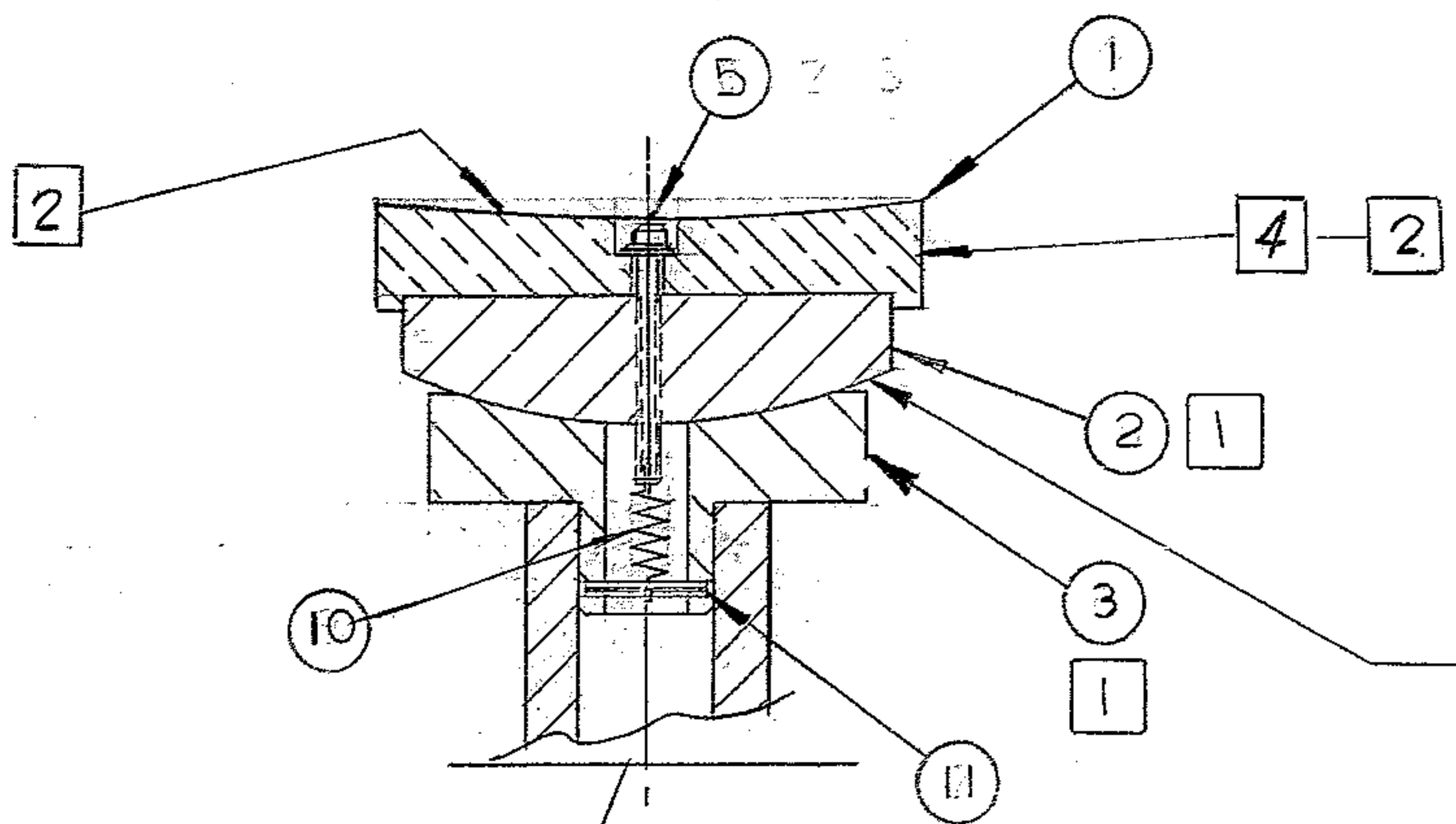


WESTERN GEAR CORPORATION
 CONSTRUCTION PROJECTS
 DEPARTMENT
 APPROVED FOR
 PROCUREMENT

DATE 6-22-68

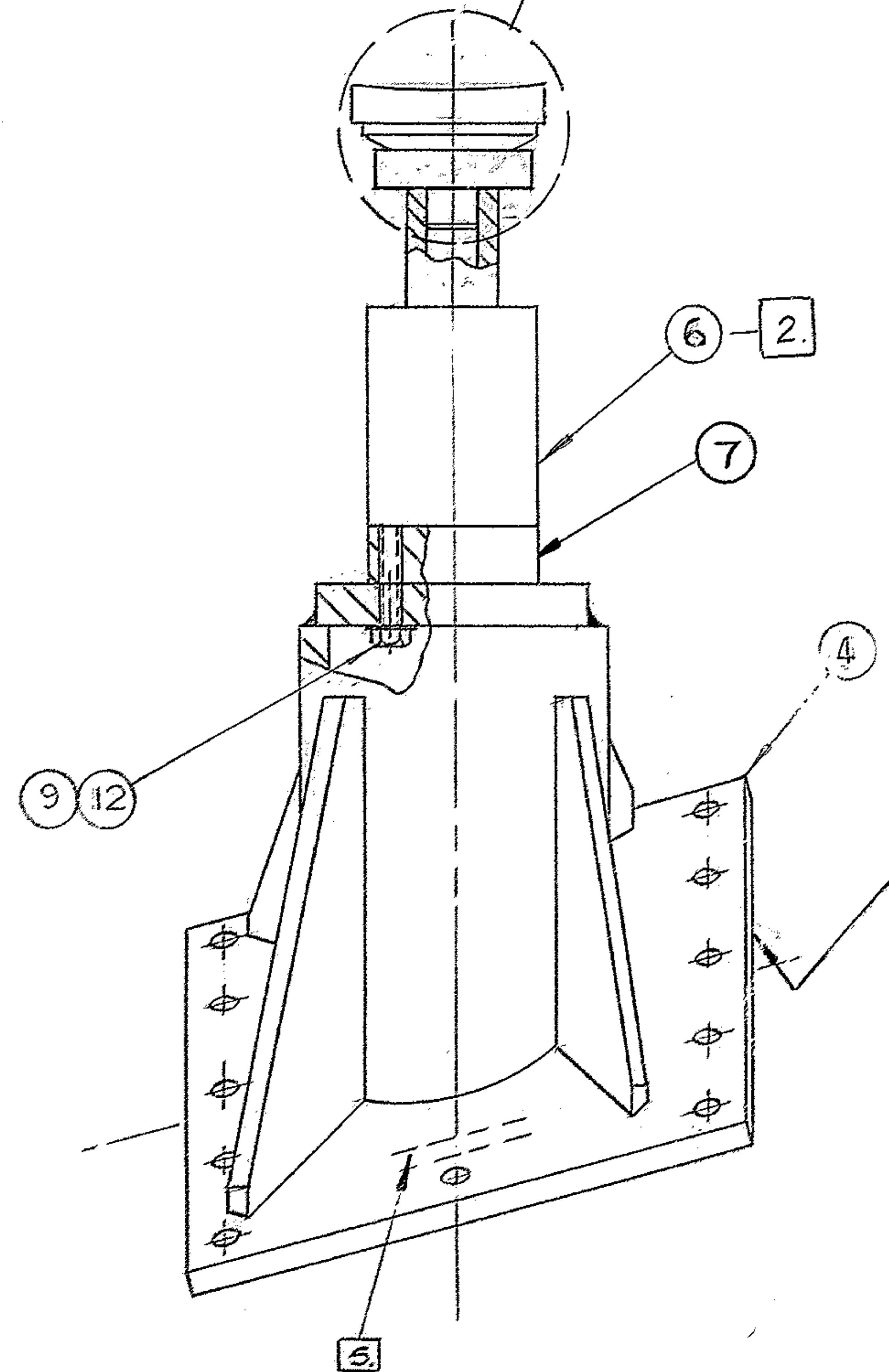
REVISIONS				
ZONE	LTR	DESCRIPTION	DATE	APPROVED
	A	REVISED PER AURA APP PRINT	6/22/68	
C-DS	B	ADDED SPACER P/N 7	7/26/71	JW
B-3	C	RELOCATED F/N 7	1/5/72	G.T.



DRY LUBE SPHERICAL SURFACE
 AT ASSY WITH MOLYKOTE OR EQ

NOTES:

1. LAP ITEMS NO. 2 AND 3 TOGETHER AT ASSY FOR 75% MIN CONTACT AREA. RECORD BY SKETCH OR PHOTOGRAPH. MATCH MARK ITEMS NO. 2 AND 3 FOR EACH ASSEMBLY
2. APPLY SECOND COAT OF PRIMER & 2 COATS OF FINISH ENAMEL ALL OVER PER W.G.C SPEC # 511 EXCEPT WHERE MARKED 2
3. PROTECT ALL UNPAINTED SURFACES (EXCEPT ITEM 1) WITH RUST PREVENTATIVE COMPOUND, BRAYCOTE PI NO. 103 BEFORE SHIPPING
4. MARK WITH LABEL OR PAINT "IMPORTANT ROTATE CAP TO MATE WITH BEARING'S SURFACE"
5. MARK ASSY NO 2150.190C 302.



2 BOTTOM MTC SURFACE

SEE B/M: 2150.190A302 (W.G.C 112929)
 NEXT ASS'Y: 2150.100E 002 (W.G.N 102845)
 2150.101E 002 (W.G.N 102846)

REF. FILE 1162

FIND NO.	PART NO.	DESCRIPTION	QTY	MATERIAL	CODE IDENT
LIST OF MATERIAL (LM)					
LIMITS ON MACHINED DIMENSIONS EXCEPT AS NOTED ANGULAR = ± 1° 0' LINEAR: X = ± .1 .XXX = ± .010 .XX = ± .03 FRACTIONAL = ± 1/32		150 th STELLAR TELESCOPE MOUNTING		WESTERN GEAR CORPORATION HEAVY MACHINERY DIVISION EVERETT, WASHINGTON	
DRAWN: [Signature] CHECK: GENE RUSSO ENGR		3-16-68 1 APR 68		SOUTH JACK ASS'Y, R.H.	
BREAK ALL SHARP EDGES		MATERIAL			
W.G.D. 107418		SIZE	CODE IDENT NO.	REV	
APPROVED		C	16603	2150.190C 302	C
SCALE 1/4		WT 155	LB	SHEET 1	OF 1