

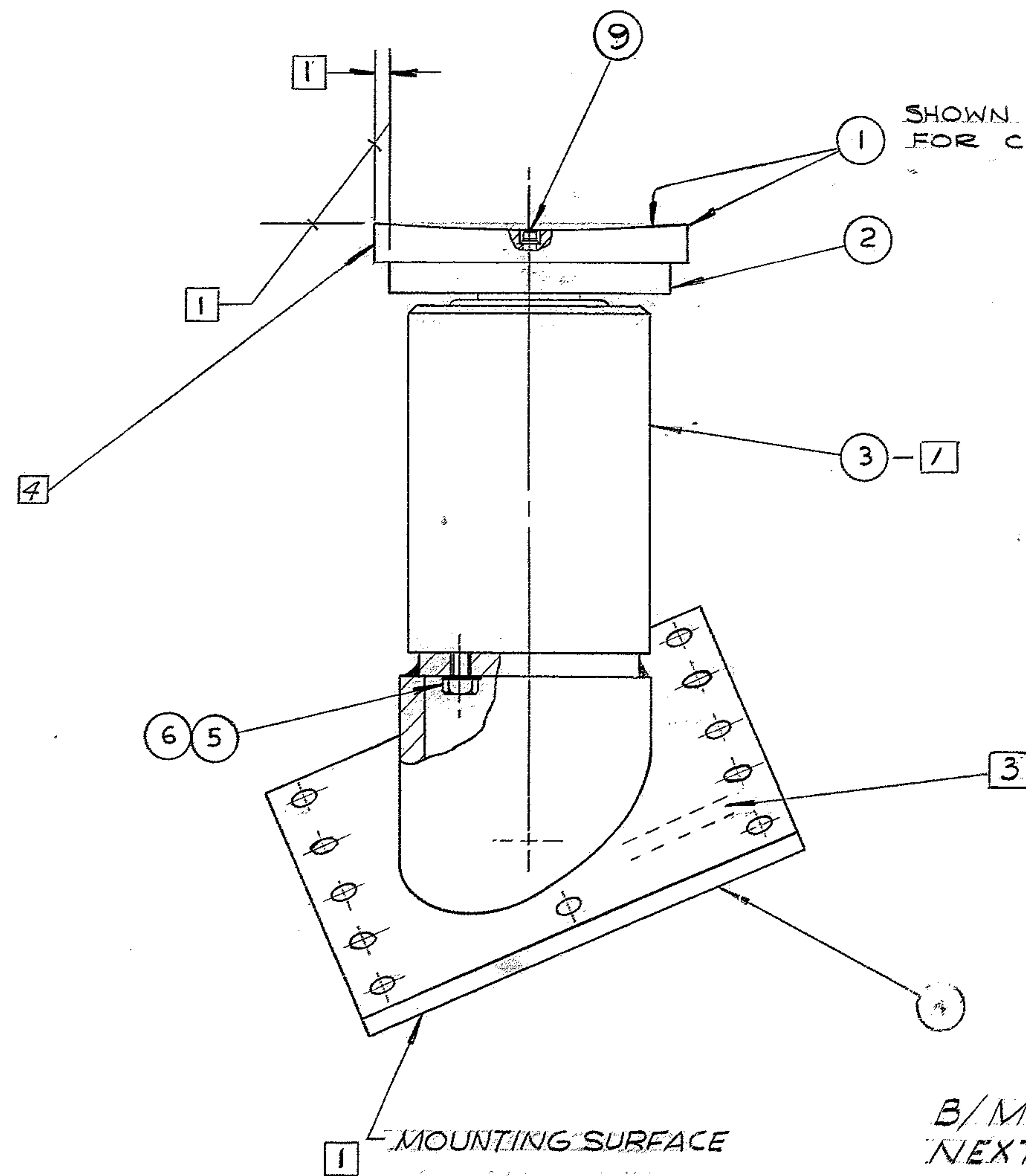
4

3

2

1

REVISIONS				
ZONE	LTR	DESCRIPTION	DATE	APPROVED
	A	REVISED PER AURA. APP PRINT.	6/22/68	



SHOWN ROTATED 90°
FOR CLARITY.

NOTES:

- 1 APPLY SECOND COAT PRIME PAINT ALL OVER. 2 COATS OF FINISH PAINT ALL EXTERNAL SURFACES W.G.C. SPEC #511 EXCEPT ON SURFACES MARKED 1
- 2 PROTECT ALL UNPAINTED SURFACES WITH RUST PREVENTATIVE COMPOUND, BRAYCOTE PI NO. 103 BEFORE SHIPPING
- 3 MARK ASSY NO 2150.190C102
- 4 MARK WITH LABEL OR PAINT "IMPORTANT ROTATE CAP TO MATE WITH BEARINGS SURFACE"

B/M 2150.190A102 (W.G.C 112954)
 NEXT ASS'Y 2150.100E002 (W.G.N 102845)
 2150.101E002 (W.G.N 102846)

REF. FILE 1162

FIND NO.	PART NO.	DESCRIPTION	QTY	MATERIAL	CODE IDENT
LIST OF MATERIAL (LM)					
LIMITS ON MACHINED DIMENSIONS EXCEPT AS NOTED ANGULAR = ± 1° 0' LINEAR: X = ± .1 .XXX = ± .010 .XX = ± .03 FRACTIONAL = ± 1/32		150 th STELLAR TELESCOPE MOUNTING		WESTERN GEAR CORPORATION HEAVY MACHINERY DIVISION EVERETT, WASHINGTON	
DRAWN <i>Shawn</i> 4-18-68 CHECK <i>McLoy</i> 4-26-68 ENGR		W.G.D 107477		ASSY, JACK, NORTH R.H. BASE FRAME	
MATERIAL		APPROVED		SIZE C	CODE IDENT NO. 2150.190C102
				SCALE 1/4	WT 121
				LB	SHEET 1 OF 1

WESTERN GEAR CORPORATION
 CONSTRUCTION PROJECTS
 DEPARTMENT
 APPROVED FOR
 PROCUREMENT
 DATE 6-22-68