

5

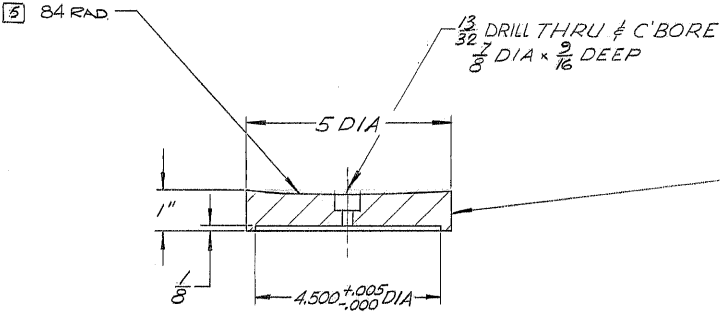
4

3

2

1

REVISIONS				
ZONE	LTR	DESCRIPTION	DATE	APPROVED
	A	REVISED PER AURA. APP PRINT	6-22-68	



NOTES

- [1] STAMP PART NO 2150.190.8003
- [2] MATL "BRASS A.S.T.M. B36 ALLOY. 6 OR. SAE 70A ANNEALED TO 1/8 HARD MAX, 5 DIA x 1 THICK..
- [3] FINISH .125/ ALL OVER.
- [4] ALL DIMENSIONS ARE IN INCHES.
- [5] MATCH CONTOUR WITH 2150.210.5003

WESTERN GEAR CORPORATION
 CONSTRUCTION PROJECTS
 DEPARTMENT
 APPROVED FOR
 PROCUREMENT
 DATE 6-22-68

NEXT ASSY: 2150.190C402 (W.G.D 107419)
 2150.190C302 (W.G.D 107418)

REF. FILE 1162

LIMITS ON MACHINED DIMENSIONS EXCEPT AS NOTED
 ANGULAR ± 1° 0'
 LINEAR
 .X = ± .1
 .XX = ± .03
 .XXX = ± .010
 FRACTIONAL ± 1/32
 BREAK ALL SHARP EDGES

150th STELLAR TELESCOPE MOUNTING
 DRAWN *S. Russo*
 CHECKED *Gene Russo* / *Arnee B*
 ENGR
 WGC 112 417
 APPROVED

WESTERN GEAR CORPORATION		HEAVY MACHINERY DIVISION EVERETT, WASHINGTON	
CAP, RAM SOUTH JACK ASS'Y			
SIZE B	CODE IDENT NO. 16603	2150.190B003	REV A
SCALE 1/2	WT. 6	LB	SHEET 1 OF 1