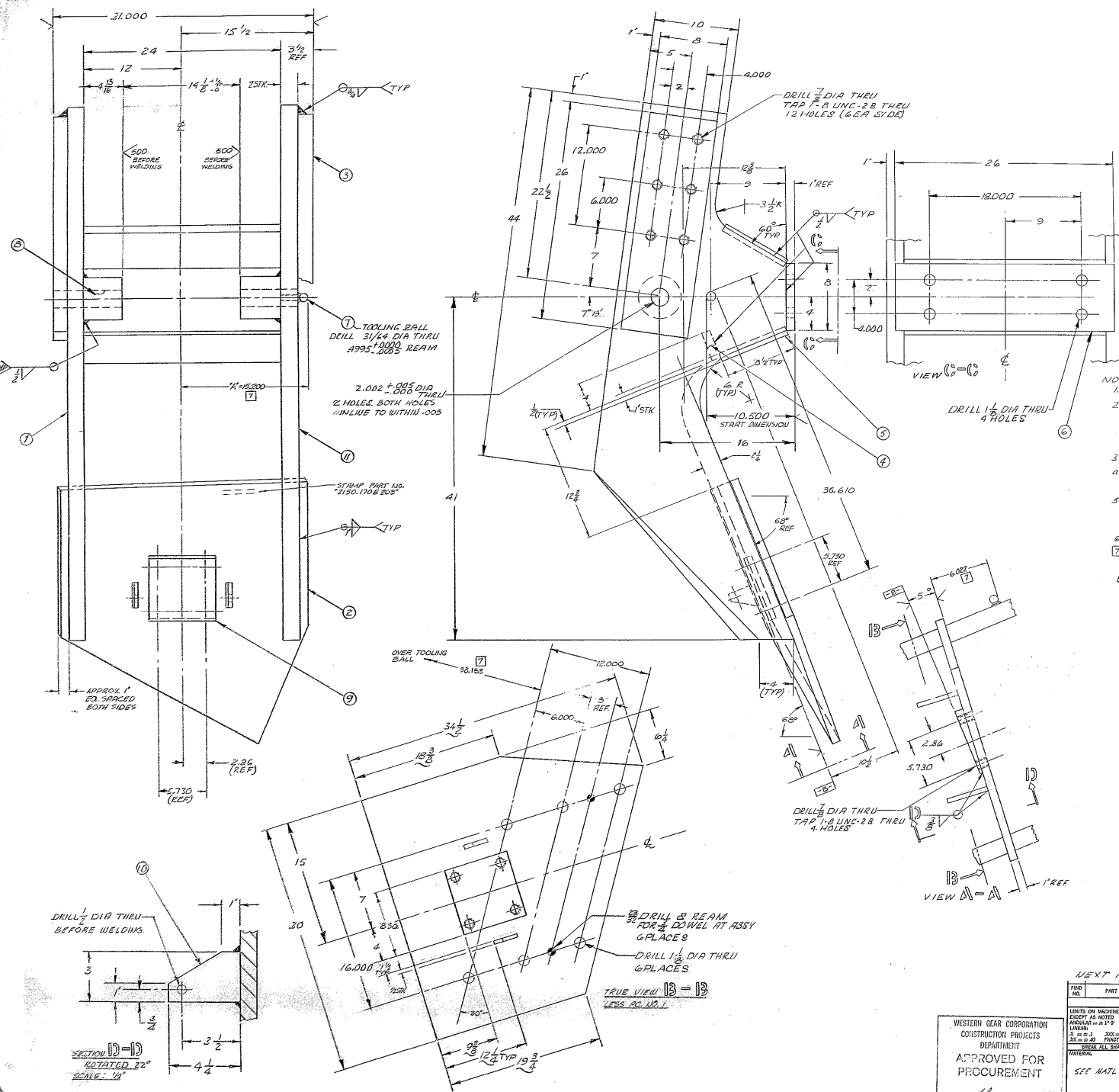


REV	DATE	DESCRIPTION	DATE	APPROVED
A	REVISED PER RUKA APPR CONST.		1-68	
B	DESIGN DATED 8-20-68		8-20-68	
C	REVISED PER RUKA APPR CONST.		8-20-68	
D	REVISED PER RUKA APPR CONST.		8-20-68	



- NOTES:
1. ALL DIMENSIONS IN INCHES
 2. FABRICATION TOLERANCES EXCEPT AS NOTED
UP TO 10 INCHES $\pm \frac{1}{16}$
10 TO 50 INCHES $\pm \frac{1}{32}$
50 INCHES AND OVER $\pm \frac{1}{16}$
 3. WELD PER W.G.C. SPEC. NO. 752 APPENDIX T1
 4. STRESS RELIEVE AFTER WELDING & EXCEED MACHINING PER W.G.C. SPEC. NO. 510.
 5. APPLY ONE COAT OF PRIME PAINT ALL OVER PER W.G.C. SPEC. NO. 511 IMMEDIATELY AFTER STRESS RELIEVING & CLEANING.
 6. ALL SURFACES MARKED TO BE ✓ EXCEPT AS NOTED
 7. THESE DIMENSIONS ARE BASED ON "A" DIMENSION = 15.200. ANY DEVIATION FROM THIS DIMENSION NECESSITATES RECALCULATION OF THESE DIMENSIONS.
 8. MAGNAFLUX INSPECT ALL WELDS

AC	QTY	DESCRIPTION	MAT'L SPEC. / FINISH
1	1	1/2" DIA BAR x 6.000	STL 5210M A36 030
2	1	1/2" DIA BAR x 2.86	STL 5210M A36 370
3	2	1/2" DIA BAR x 1.50	STL 5210M A36 370
4	1	1/2" DIA BAR x 1.50	STL 5210M A36 370
5	4	1/2" DIA BAR x 1.50	STL 5210M A36 370
6	1	1/2" DIA BAR x 1.50	STL 5210M A36 370
7	1	1/2" DIA BAR x 1.50	STL 5210M A36 370
8	2	1/2" DIA BAR x 1.50	STL 5210M A36 370
9	1	1/2" DIA BAR x 1.50	STL 5210M A36 370
10	2	1/2" DIA BAR x 1.50	STL 5210M A36 370
11	1	1/2" DIA BAR x 1.50	STL 5210M A36 370

WESTERN GEAR CORPORATION
CONSTRUCTION PROJECTS DEPARTMENT
APPROVED FOR PROCUREMENT

WESTERN GEAR CORPORATION
HEAVY MACHINERY DIVISION
EVERETT, WASHINGTON

FRAME - RH
RA HYDRAULIC SHOCK
ABSORBER

W.G. 11603
2150.170E 203
SCALE: 1/2" = 1"

SECTION D-D
ROTATED 32°
SCALE: 1/2"

WESTERN GEAR CORPORATION
CONSTRUCTION PROJECTS DEPARTMENT
APPROVED FOR PROCUREMENT

REV	DATE	DESCRIPTION	QTY	MATERIAL	CODE
1	1-68	1/2" DIA BAR x 6.000	1	STL 5210M A36 030	
2	1-68	1/2" DIA BAR x 2.86	1	STL 5210M A36 370	
3	1-68	1/2" DIA BAR x 1.50	2	STL 5210M A36 370	
4	1-68	1/2" DIA BAR x 1.50	1	STL 5210M A36 370	
5	1-68	1/2" DIA BAR x 1.50	4	STL 5210M A36 370	
6	1-68	1/2" DIA BAR x 1.50	1	STL 5210M A36 370	
7	1-68	1/2" DIA BAR x 1.50	1	STL 5210M A36 370	
8	1-68	1/2" DIA BAR x 1.50	2	STL 5210M A36 370	
9	1-68	1/2" DIA BAR x 1.50	1	STL 5210M A36 370	
10	1-68	1/2" DIA BAR x 1.50	2	STL 5210M A36 370	
11	1-68	1/2" DIA BAR x 1.50	1	STL 5210M A36 370	