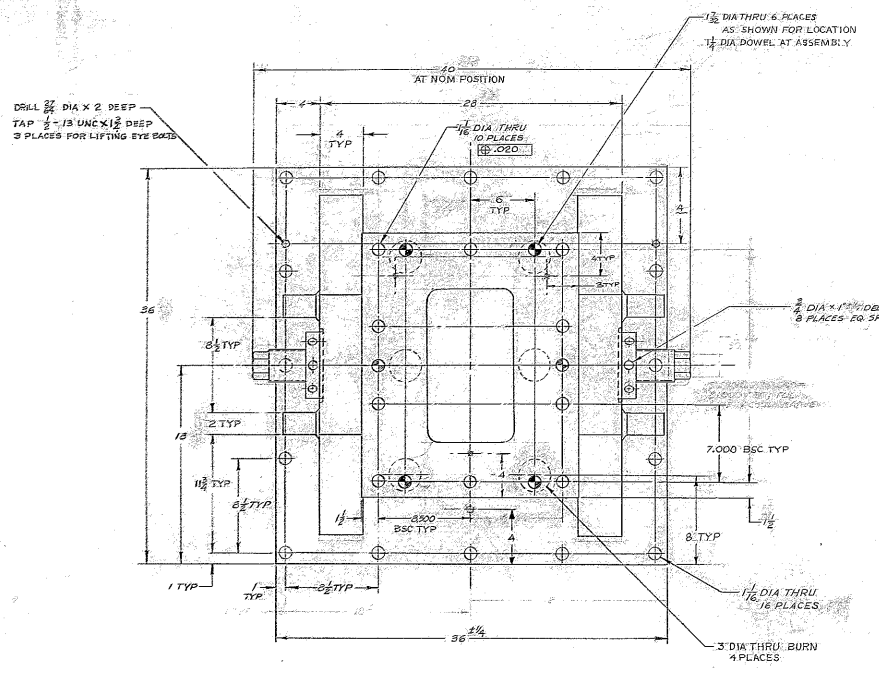
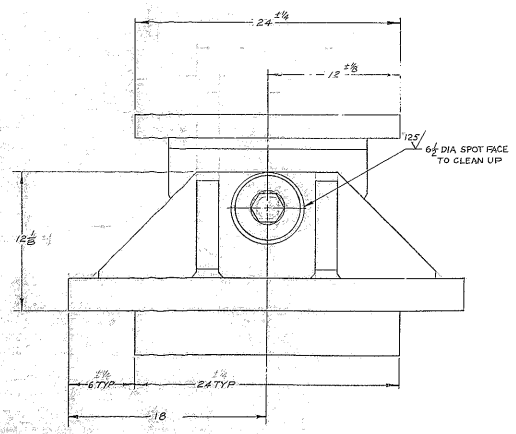
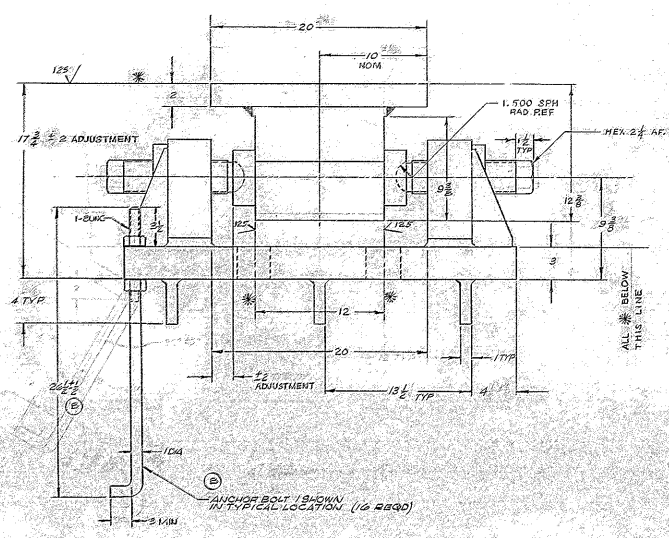


REVISIONS			
ZONE	LT#	DESCRIPTION	DATE APPROVED
A		REVISED PER AURA APR 2007	2/2/08
B		PRINT DATED 2-17-08 REVISED PER TAUM & WESTERN W/OKS FROM ANCHOR BOLT AND ADDS 2 1/2 DIA	2-4-08



- NOTES:
- 1) ALL DIMENSIONS IN INCHES.
 - 2) ALL SURFACES EXCEPT WHERE MARKED THUS * ARE PAINTED WITH TWO COATS OF PRIME PAINT
 - 3) TOLERANCES EXCEPT AS NOTED
 UP TO 10 INCHES $\pm \frac{1}{16}$
 UP TO 30 INCHES $\pm \frac{1}{8}$
 30 INCHES \pm OVER $\pm \frac{1}{4}$



WESTERN GEAR CORPORATION
 CONSTRUCTION PROJECTS
 DEPARTMENT
 APPROVED FOR
 PROCUREMENT
 EXAMINED DATE 12/2/10

2150,101E001 (WGN 102,805)		REV. 1158				
NEXT ASSY: 2150,100E001 (WGN 102,804)						
ITEM NO.	PART NO.	DESCRIPTION	QTY	MATERIAL	CODE	REMARKS
LIST OF MATERIAL (L/M)						
LIMITS ON MACHINED DIMENSIONS EXCEPT AS NOTED		150° STELLAR TELESCOPE MOUNTING				
ANGULAR $\pm .01$ °		WESTERN GEAR CORPORATION				
LINEAR $\pm .005$		HEAVY MACHINERY DIVISION				
HOLE $\pm .005$		EYECITY, WASHINGTON				
TAPER $\pm .005$		OUTLINE EAST-WEST BASE SUPPORT MOUNTING				
CHAMFER $\pm .005$		EYECITY, WASHINGTON				
BREAK ALL SHARP EDGES		EYECITY, WASHINGTON				
MATERIAL		EYECITY, WASHINGTON				
WGN 102,810		SITE / ORDER / DRAWING NO.				
APPROVED		E 16603 2150-150E301 5				
		SCALE 3" = 1" INT 2,640				
		LR SHEET 1 OF 1				