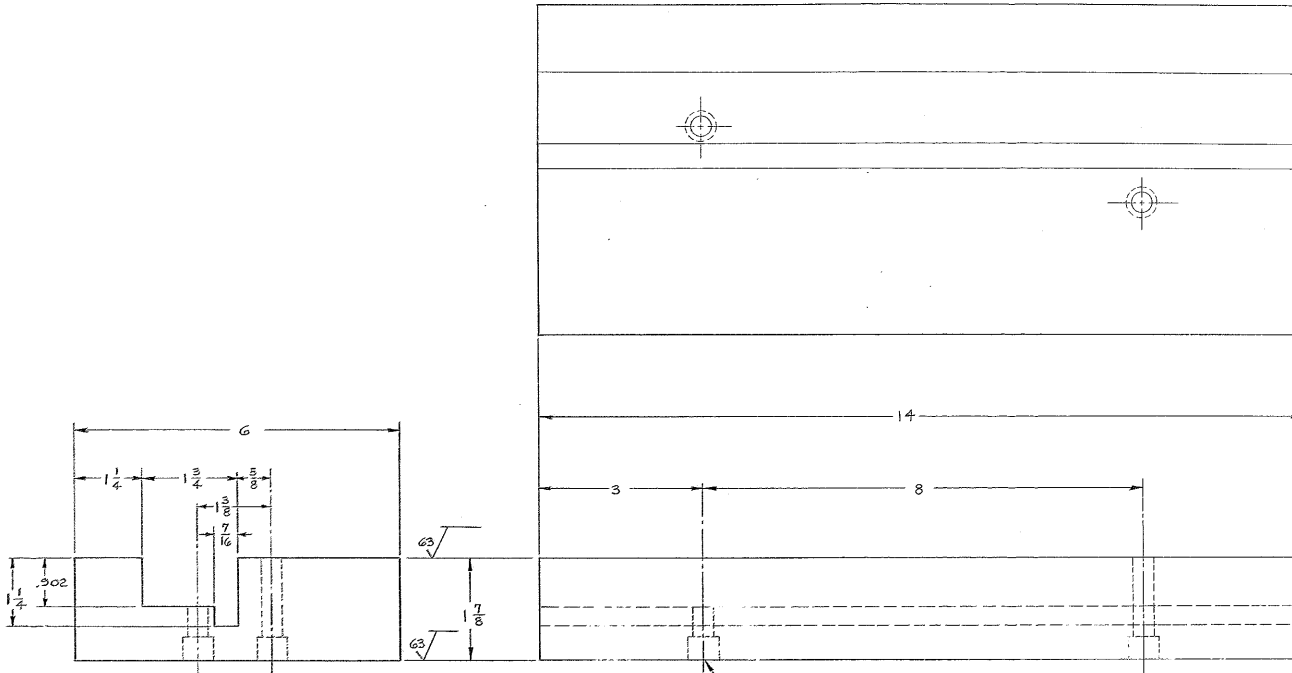


BILL OF MATERIAL

ITEM	QTY	MATERIAL	DESCRIPTION	WEIGHT
------	-----	----------	-------------	--------



.406 DIA THRU
 CBORE .625 DIA X .44 DEEP
 2 HOLES

MATL: H R STEEL

- 5-BREAK SHARP EDGES .03
- 4-IDENTIFY BY _____ AT LOCATION "AURA-INC. MADE IN U.S.A"
- 3-STAMP-MATCH MARKS ON ALL MATING PARTS WHERE NECESSARY:
- 2-PROJECT DRAWINGS _____
- 1-FOR NEXT ASSY. SEE 2150.150-3702

NOTES:

REV	DATE	BY	CHK	APP	DESCRIPTION

TOLERANCES UNLESS OTHERWISE NOTED
 DECIMAL DIMENSIONS
 .0000 & .001
 FRACTIONAL DIMENSIONS
 UP TO 1/4" ± 1/64
 UP TO 3/4" ± 1/32
 3/4" & OVER ± 1/16
 ANGLES ± .01°
 ALL SURFACES TO HAVE FINISH UNLESS OTHERWISE NOTED.

KITT PEAK NATIONAL OBSERVATORY
 OPERATED BY THE ASSOCIATION OF UNIVERSITIES FOR RESEARCH IN ASTRONOMY, INC.
 (PLEASE CONTACT WITH NATIONAL SCIENCE FOUNDATION)

150 INCH STELLAR TELESCOPE REV 1158

NAME _____ SCALE FULL
 PRINT ISSUED _____

FRAME FLANGE ADAPTER-WEST
 SOUTH BASE SUPPORT STABILIZER ASSY

DESIGNED BY DATE 8-22-78 APPROVED BY DATE 9-18-78
 DRAWN BY DATE 8-29-78 CHECKED BY DATE 10-10-78
 PROJECT NO. 2150.150-3702

DRAWING NUMBER 2150.150-D703