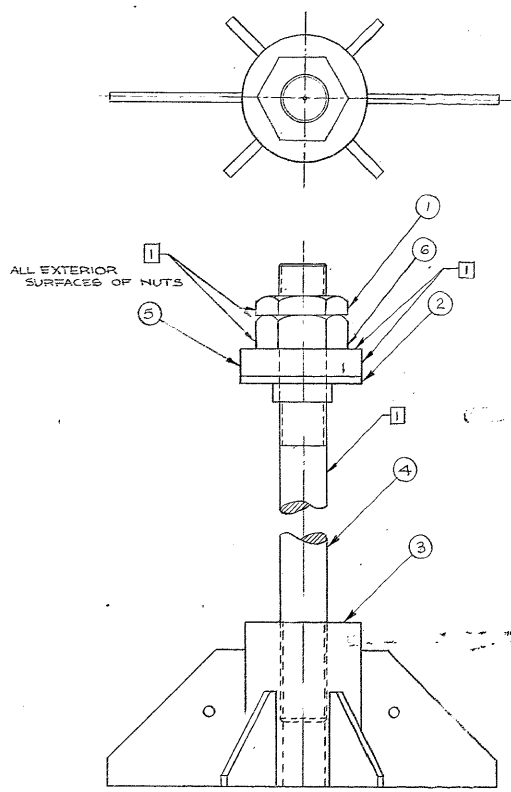


ZONE		LTR		DESCRIPTION	DATE	APPROVED
A				REVISED PER AURA APPD. CONST. PRINT DATED 17 FEB 68	2/21/68	
B				REVERSED PIN 1 & 6	5/18/53	LDS



ALL EXTERIOR SURFACES OF NUTS

NOTES:

- 1 PAINT ALL SURFACES MARKED 1 WITH SECOND COAT OF PRIME PAINT PER W.G.C SPECIFICATION 511.
- 2 PROTECT THREADS WITH RUST PREVENTATIVE COMPOUND BRAYCOTE PI #103.

SEE B/M 2150.150A502 (W.G.C. 112,901)  
 NEXT ASSEMBLY: 2150.100E002 (W.G.N. 102845)

1/52

WESTERN GEAR CORPORATION  
 CONSTRUCTION PROJECTS  
 DEPARTMENT  
 APPROVED FOR  
 PROCUREMENT  
 SIGNED: *[Signature]* DATE: FEB 24 1968

FIND NO.	PART NO.	DESCRIPTION	QTY	MATERIAL	CODE IDENT
LIST OF MATERIAL (LM)					
LIMITS ON MACHINED DIMENSIONS EXCEPT AS NOTED		150 <sup>th</sup> STELLAR TELESCOPE MOUNTING			
ANGULAR = ± 1°		DRAWN <i>[Signature]</i> 1/24/68			
LINEAR		CHECK <i>[Signature]</i> 1/24/68			
X = ± .1		XXX = ± .010			
XX = ± .05		FRACTIONAL = ± 1/32			
BROKE ALL SHARP EDGES		ENGR			
MATERIAL		ENGR			
V.G.E. 107,527		SIZE		CODE IDENT NO.	REV
APPROVED		D 16603		2150.150D502	B
ORIGINAL		SCALE 1/4"		WT 360	LB SHEET OF 1

**WESTERN GEAR CORPORATION**  
 HEAVY MACHINERY DIVISION  
 EVERETT, WASHINGTON  
 ANCHOR, ASSEMBLY,  
 SOUTH SEISMIC K-PNO