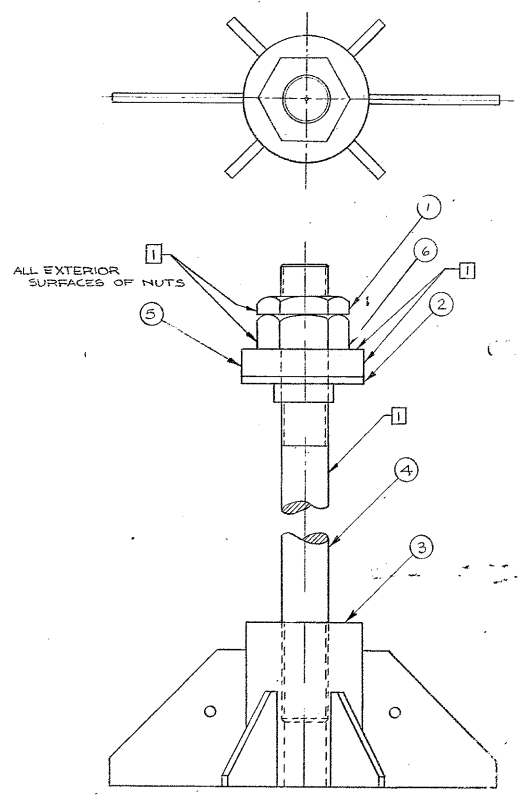


REVISIONS				
ZONE	LTR	DESCRIPTION	DATE	APPROVED
	A	REVISED PER AURA APPD CONST PRINT DATED 17 FEB 68	2/14/68	
	B	REVERSED DIA 1 & 6	3/19/68	CS



NOTES:  
 □ PAINT ALL SURFACES MARKED □ WITH SECOND COAT OF PRIME PAINT PER W.G.C SPECIFICATION S11.  
 2. PROTECT THREADS WITH RUST PREVENTATIVE COMPOUND BRAYCOTE PI #103.

SEE B/M 2150.150A402 (W.G.C. 112,900) 115.8  
 NEXT ASSEMBLY: 2150.100E002 (W.G.N. 102845)

WESTERN GEAR CORPORATION  
 CONSTRUCTION PROJECTS  
 DEPARTMENT  
 APPROVED FOR  
 PROCUREMENT  
 SIGNED *[Signature]* DATE FEB 24 1968

FIG. NO.	PART NO.	DESCRIPTION	QTY	MATERIAL	CODE IDENT.
LIST OF MATERIAL (LM)					
LIMITS ON MACHINED DIMENSIONS EXCEPT AS NOTED ANGULAR = ± 1° LINES:		150 <sup>MM</sup> STELLAR TELESCOPE MOUNTING		<b>WESTERN GEAR CORPORATION</b> HEAVY MACHINERY DIVISION EVERETT, WASHINGTON	
X = ± .1    XXX = ± .01 XX = ± .03    FRACTIONAL = ± 1/32		DRAWN <i>[Signature]</i> 1/22/68 CHECK <i>[Signature]</i> 1/22/68		<b>ANCHOR, ASSEMBLY, NORTH SEISMIC KPNO</b>	
MATERIAL		ENGR			
BREAK ALL SHARP EDGES		ENGR			
APPROVED		ORIGINAL		SIZE CODE IDENT NO. <b>D 16603</b> 2150.150D402 REV B	
				SCALE 1/4" WT 3.5 LB SHEET OF 1	