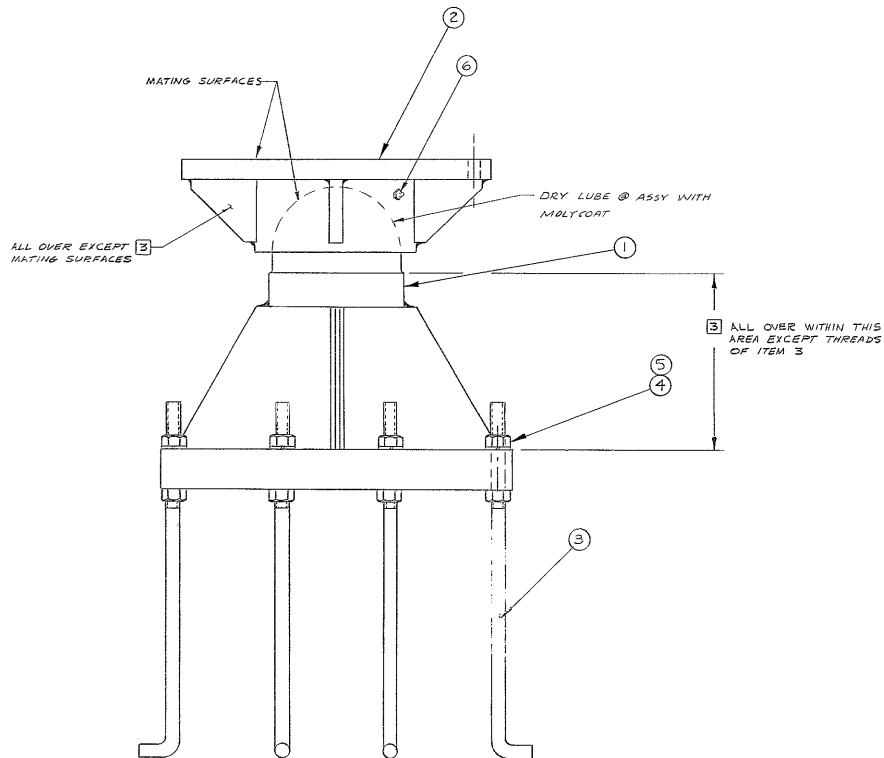


REVISIONS				
ZONE	LTR	DESCRIPTION	DATE	APPROVED
	A	REVISED PER AURA APPD CONST. PAINT DATED 17 FEB 68	2/24/68	
	B	CHANGED ITEM 3 RECORDINGS TO ANCHOR BOLT DIA 2.9515 @ 2.065	4-2-	



NOTES

1. LAP ITEMS 1 & 2 TOGETHER AT ASSEMBLY TO ACHIEVE 75% MINIMUM CONTACT. RECORD BY SKETCH OR PHOTOGRAPH
2. MATCH MARK ITEMS 1 & 2 FOR EACH ASSEMBLY
3. APPLY SECOND COAT OF PRIME PAINT PER WESTERN GEAR SPECIFICATION #511
4. PROTECT ALL UNPAINTED SURFACES WITH RUST PREVENTATIVE COMPOUND GRAYCOTE PI #103 BEFORE SHIPPING

SEE B/M 2150.150A.202 (W.G. 512903)
 NEXT ASSY 2150.101E002 (W.G. 108846)
 2150.100E002 (W.G. 102845)

1133

WESTERN GEAR CORPORATION
 CONSTRUCTION PROJECTS
 DEPARTMENT
 APPROVED FOR
 PROCUREMENT
J. L. ...
 SIGNED _____ DATE FEB 24 1968

FIND NO.	PART NO.	DESCRIPTION	QTY	MATERIAL	CODE IDENT
LIST OF MATERIAL (LM)					
LIMITS ON MACHINED DIMENSIONS EXCEPT AS NOTED		150 IN STELLAR TELESCOPE MOUNTING			
ANGULAR = ± 1°		DRAWN <i>J. L. ...</i> 1/24/68			
LINEAR:		CHECK <i>Gene K...</i> 1/24/68			
X = ± .1 XX = ± .010		B/M 107533			
XX = ± .03 FRACTIONAL = ± 1/32		APPROVED			
BREAK ALL SHARP EDGES		ENGR			
MATERIAL		WGE 107533			
SIZE	CODE IDENT NO.	REV			
D	16603	B	2150.150D202		
SCALE	WT	LB	SHEET	OF 1	
1/4"	16.72		1		

SUPPORT ASSEMBLY
 SOUTH BASE