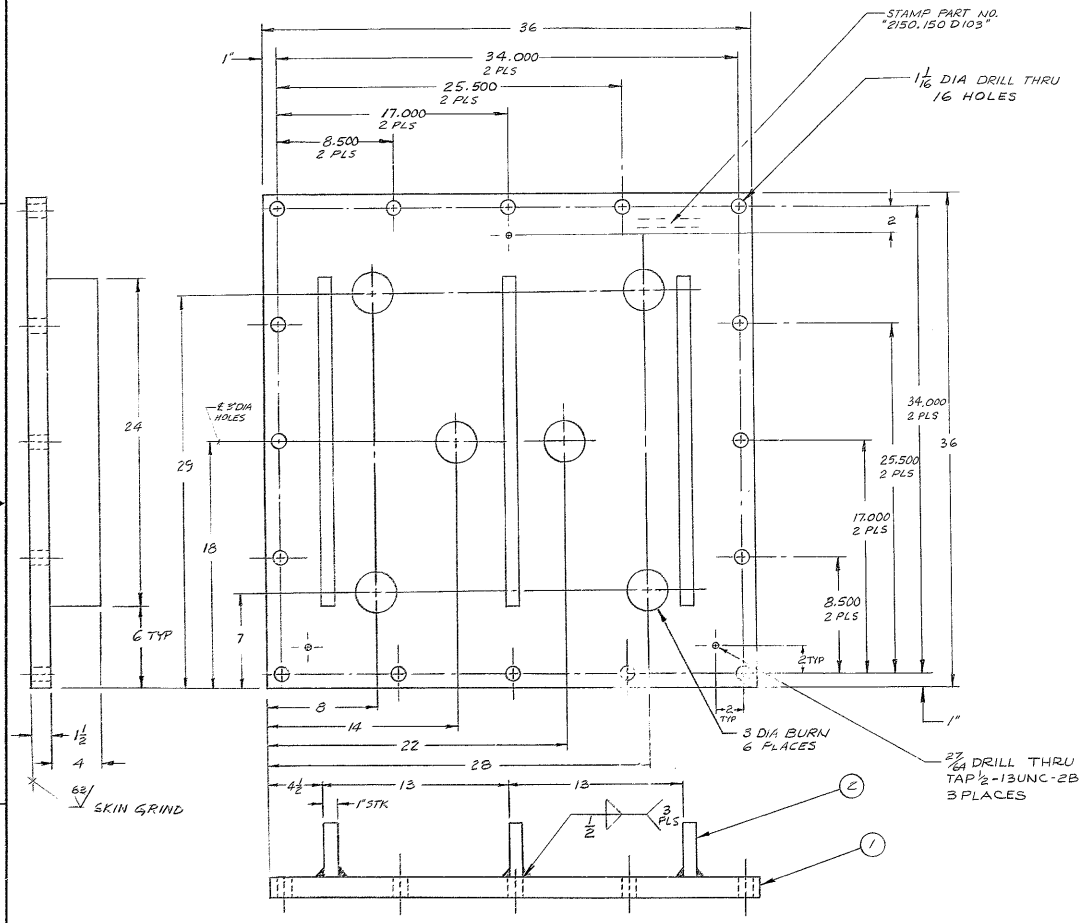


REVISIONS			
ZONE	LTR	DESCRIPTION	DATE APPROVED
A		REVISED PER AURA APPD. CONSTR. PRINT	10-1-68



MATERIAL LIST				
PC. NO.	QTY	DESCRIPTION	MAT'L & SPEC.	ROUGH WT.
1	1	PL 36x1 1/2 x 36	STL ASTM A-36	551
2	3	RL 4 x 1 x 24	STL ASTM A-36	27

NOTES:

- FABRICATION TOLERANCES, EXCEPT AS NOTED
 UP TO 10 INCHES ± 1/16 INCH
 10 TO 50 INCHES ± 1/8 INCH
 50 INCHES & OVER ± 1/4 INCH
- WELD PER W.G.C. SPECIFICATION 752.
- STRESS RELIEVE AFTER WELDING & BEFORE MACHINING PER W.G.C. SPECIFICATION NO. 510.
- DO NOT PAINT.
- ALL DIMENSIONS INCHES.

NEXT ASSY 2150.150 D102 (W.G. E 107 529)

1103

WESTERN GEAR CORPORATION
 CONSTRUCTION PROJECTS
 DEPARTMENT
 APPROVED FOR
 PROCUREMENT
 SIGNED: [Signature] DATE: FEB 2 1968

FIND NO.	PART NO.	DESCRIPTION	QTY	MATERIAL	CODE IDENT
LIMITS ON MACHINED DIMENSIONS EXCEPT AS NOTED ANGULAR = ± 1° LINEAR: X = ± .1 XXX = ± .010 XX = ± .03 FRACTIONS = ± 1/32 CHECK Green Russo 1 Feb 68 BREAK ALL SHARP EDGES					
LIST OF MATERIAL (LM)					
150W STELLAR TELESCOPE MOUNTING		WESTERN GEAR CORPORATION HEAVY MACHINERY DIVISION EVERETT, WASHINGTON			
DRAWN A. VanHous 1-21-68 CHECK Green Russo 1 Feb 68		MATERIAL INGR			
SEE MAT'L LIST		W.G. E 107 537		SIZE CODE IDENT NO. REV	
APPROVED		D 16603		2150.150 D103 A	
SCALE 1/4" = 1" WT 5.8 LB SHEET 1 OF 1					