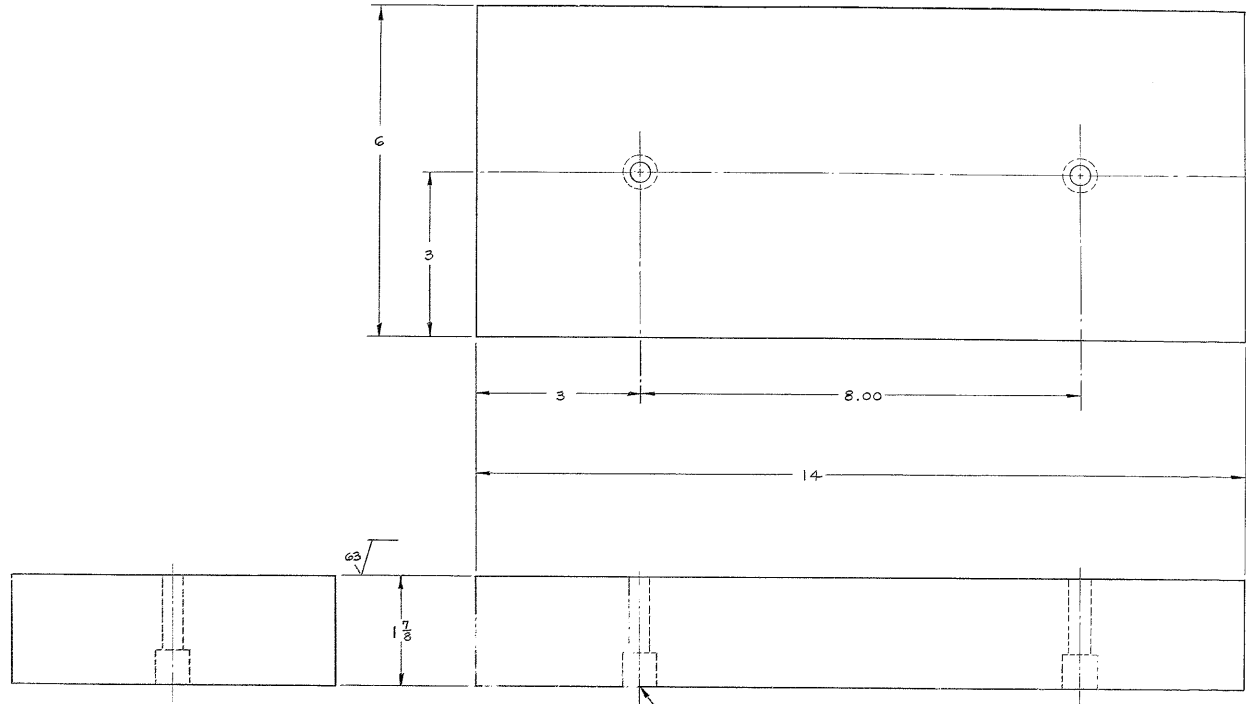


BILL OF MATERIAL

ITEM	QTY	MATERIAL	DESCRIPTION	WEIGHT
------	-----	----------	-------------	--------



MATL: H R STEEL

.421 DIA THRU  
C BORE .625 DIA X .62 DEEP  
2 HOLES

- 5-BREAK SHARP EDGES .03
  - 4-IDENTIFY-DY \_\_\_\_\_ AT LOCATION  "AURATIC MADE IN U.S.A."
  - 3-6FAMP-MATCH-MARKS ON ALL MATING PARTS WHERE NECESSARY
  - 2-PROJECT-DRAWINGS
  - 1-FOR NEXT ASSY. SEE 2150.150-D602 & 2150.150-D702
- NOTES-

REV.	REVISION	SCR	DATE	BY

TOLERANCES UNLESS OTHERWISE NOTED DECIMAL DIMENSIONS .000 & .010 .0000 & .0005 FRACTIONAL DIMENSIONS 1/16 TO 1/8 ± 1/64 3/16 TO 1/2 ± 1/32 5/8 & OVER ± 1/16 ANGLES ± 0° -30°		<b>KITT PEAK NATIONAL OBSERVATORY</b> ASSOCIATION OF UNIVERSITIES FOR RESEARCH IN ASTRONOMY, INC. NATIONAL SCIENCE FOUNDATION	
ALL SURFACES TO HAVE 15° FINISH UNLESS OTHERWISE NOTED.		150 INCH STELLAR TELESCOPE <b>PRE 1158</b> SCALE: FULL PRINT ISSUED	
NAME BASE PLATE SOUTH BASE SUPPORT STABILIZER ASSY		DRAWING NUMBER 2150.150-D011	
DESIGNED BY CHECKED BY DRAWN BY	DATE DATE DATE	APPROVED BY DATE DATE	REV. DATE DATE