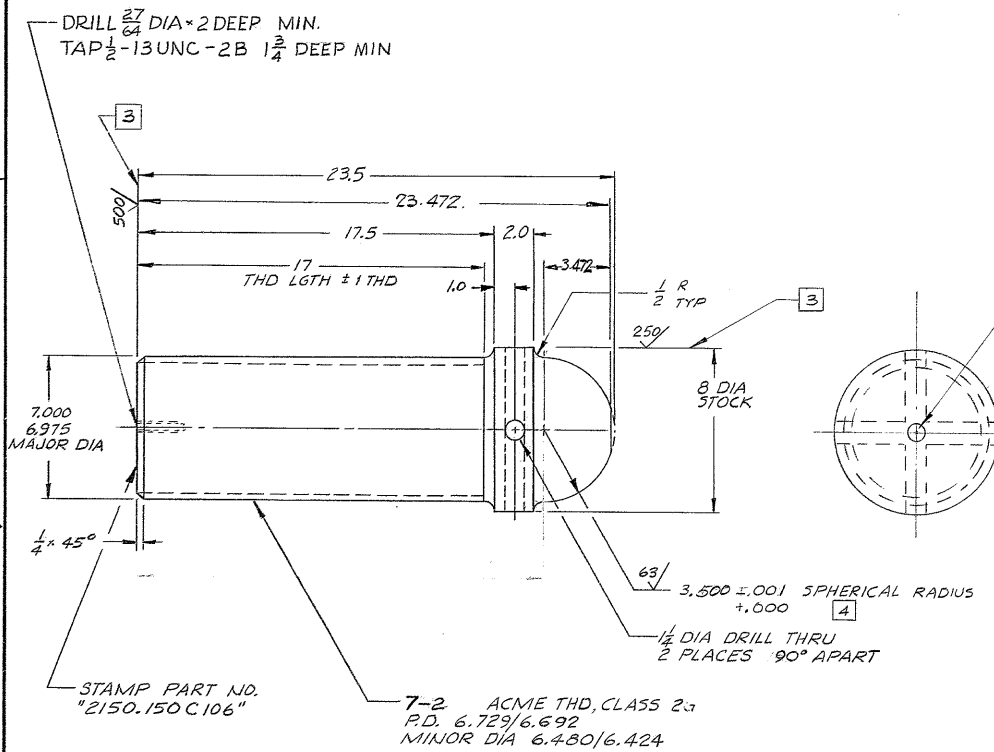


REVISIONS				
ZONE	LTR	DESCRIPTION	DATE	APPROVED
	A	REVISED PER AURA APPD. CONSTR. PRINTS	2-24-68	
2c	B	END VIEW & 7/8 DIA FLAT ADDED.	10/11/68	
3c.	B	23.472 & 3.472 DIMS ADDED.		



- NOTES:
1. FINISH $125\sqrt{\text{ }}$ ALL OVER EXCEPT AS NOTED.
 2. ALL DIMENSIONS IN INCHES.
 3. PAINT SURFACES MARKED THUS 3 PER W.G.C. SPECIFICATION NO. 511.
 4. POLISH AT ASSEMBLY PER INSTRUCTIONS ON DRAWING NO. 2150.150D102

STAMP PART NO. "2150.150C106"

7-2 ACME THD, CLASS 2
P.D. 6.729/6.692
MINOR DIA 6.480/6.424

NEXT ASSY: 2150.150D102 (W.G. E107,529)

REF. FILE 1158

WESTERN GEAR CORPORATION
CONSTRUCTION PROJECTS
DEPARTMENT

APPROVED FOR
PROCUREMENT

John L. Shoen
SIGNED DATE FEB 24 1968

FIND NO.	PART NO.	DESCRIPTION	QTY	MATERIAL	CODE IDENT
LIST OF MATERIAL (LM)					
LIMITS ON MACHINED DIMENSIONS EXCEPT AS NOTED		150 IN STELLAR TELESCOPE MOUNTING			
ANGULAR = ± 1° 0'		DRAWN <i>E.R.</i> 4 FEB 68			
LINEAR:		CHECK <i>Gene Russo</i> 4 FEB 68			
X = ± .1 .XXX = ± .010		ENGR			
.XX = ± .03 FRACTIONAL = ± 1/32		W.G. D 107 304			
BREAK ALL SHARP EDGES		APPROVED			
MATERIAL		SIZE		CODE IDENT NO.	REV
STL BAR, AISI C-1018 COLD FINISHED 8 DIA × 24 LG		C 16603		2150.150C106	B
SCALE 1/4		WT 265		LB SHEET 1 OF 1	

WESTERN GEAR CORPORATION

HEAVY MACHINERY DIVISION
EVERETT, WASHINGTON

SCREW,
NORTH BASE SUPPORT