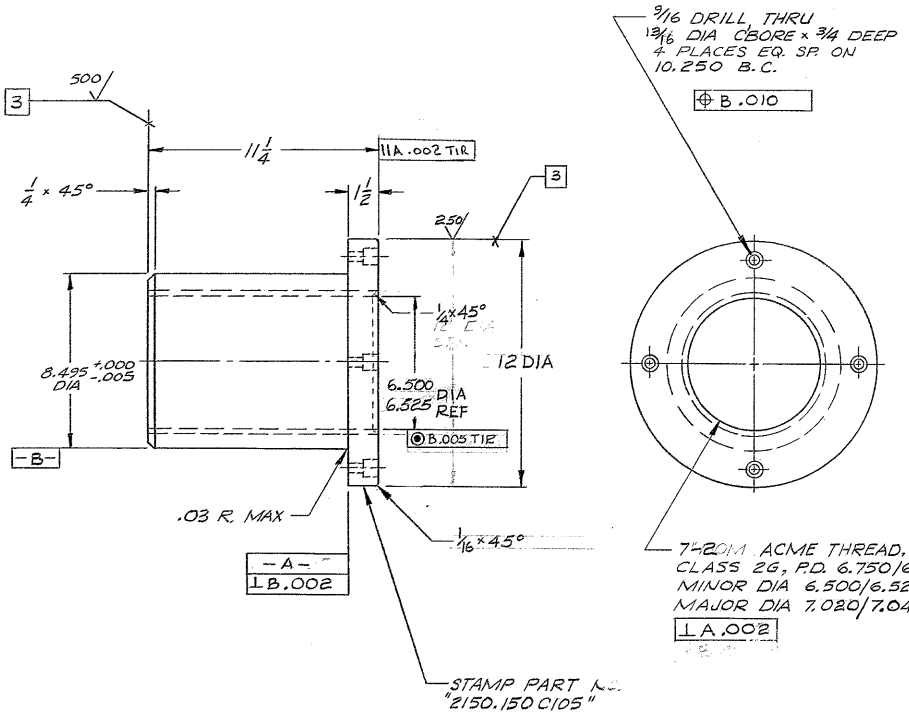


REVISIONS				
ZONE	LTR	DESCRIPTION	DATE	APPROVED
A		REVISED PER AURA APPD. CONSTR. PRINT 2/24/68	2/24/68	
C3	B	6.500/6.525 WAS MAJOR DIA.	4/30/68	



NOTES:

1. FINISH 125 ALL OVER, EXCEPT AS NOTED.
2. MAGNAFLUX INSPECT
3. PAINT SURFACES MARKED THUS [3] PER W.G.C. SPECIFICATION NO. 511.
4. ALL DIMENSIONS IN INCHES

7-20 ACME THREAD,
CLASS 2G, P.D. 6.750/6.766
MINOR DIA 6.500/6.525
MAJOR DIA 7.020/7.040
[L.A.002]

NEXT ASSY 2150.150D102 (W.G. E107529)

1158

WESTERN GEAR CORPORATION
CONSTRUCTION PROJECTS
DEPARTMENT
APPROVED FOR
PROCUREMENT
SIGNED *John L. ...* DATE FEB 24 1968

FIND NO.	PART NO.	DESCRIPTION	QTY	MATERIAL	CODE IDENT
LIST OF MATERIAL (LM)					
LIMITS ON MACHINED DIMENSIONS EXCEPT AS NOTED ANGULAR = ± 1° 0' LINEAR: X = ± .1 XXX = ± .010 XX = ± .03 FRACTIONAL = ± 1/32		150 IN STELLAR TELESCOPE MOUNTING		WESTERN GEAR CORPORATION HEAVY MACHINERY DIVISION EVERETT, WASHINGTON	
BREAK ALL SHARP EDGES		DRAWN <i>E.R.</i> 2/5/68 CHECK <i>Gene Russo</i> 5/FEB/68		BUSHING, NORTH BASE SUPPORT	
MATERIAL STL, BAR A131 C-1018 OR EQUIV. FORGED 12 1/4 DIA x 1 1/4 LG		ENGR		W.G. D 107 306	
APPROVED		APPROVED		SIZE CODE IDENT NO. C 16603 2150.150C105	
SCALE 1/4" = 1" WT 30 LB		SHEET 1 OF 1		REV B	