

5

4

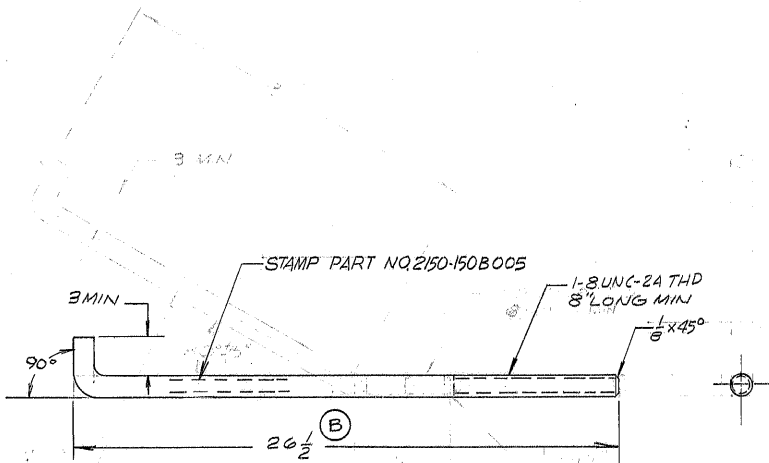
3

2

1

REVISIONS

ZONE	LTR	DESCRIPTION	DATE	APPROVED
	A	REVISED PER AURA APPD. CONSTR. POINT	2-24-68	
	B	REMOVED 18" \pm 30" AND ADDED 26 1/2 DIM	3-4-68	



NOTES:

1. MAT'L ST'L AISI C-1018
1" DIA STOCK \times 29 1/2 LG
2. DO NOT PAINT
3. ALL DIMENSION IN INCHES
4. HOT FORM ALL BENDS

WESTERN GEAR CORPORATION
CONSTRUCTION PROJECTS
DEPARTMENT
APPROVED FOR
PROCUREMENT

SIGNED

DATE FEB 24 1968

2150.150D302 (W.GE 107534)
2150.150D202 (W.GE 107533)
NEXT ASSY 2150.150D102 (W.GE 107529)

REF.

+1158

LIMITS ON
MACHINED DIMENSIONS
EXCEPT AS NOTED

ANGULAR \pm 1° 0'

LINEAR

X \pm .1XX \pm .08XXX \pm .010FRACTIONAL \pm 1/32BREAK ALL
SHARP EDGES

150" STELLAR
TELESCOPE MOUNTING

DRAWN *Henry Brown*CHECK *Gene Russo 4 Feb 68*

ENGR

W.G.C 112306

APPROVED

Western
GEAR CORPORATION

HEAVY MACHINERY DIVISION
EVERETT, WASHINGTON

BOLT, ANCHOR -
BASE SUPPORTS

SIZE

B 16603

2150.150B005

REV

B

SCALE 1/4" = 1" WT. 5 LB SHEET 1 OF 1